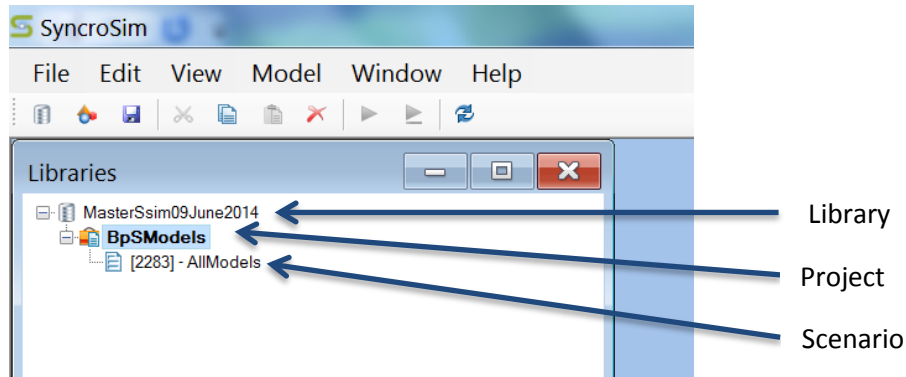


How to find a specific BpS model in St-Sim

Background

There are more than 1,000 BpS models in the LANDFIRE ST-Sim database (Library). Follow these instructions to find and view an individual BpS model. Here are a few ST-Sim terms that you need to understand for this tutorial.

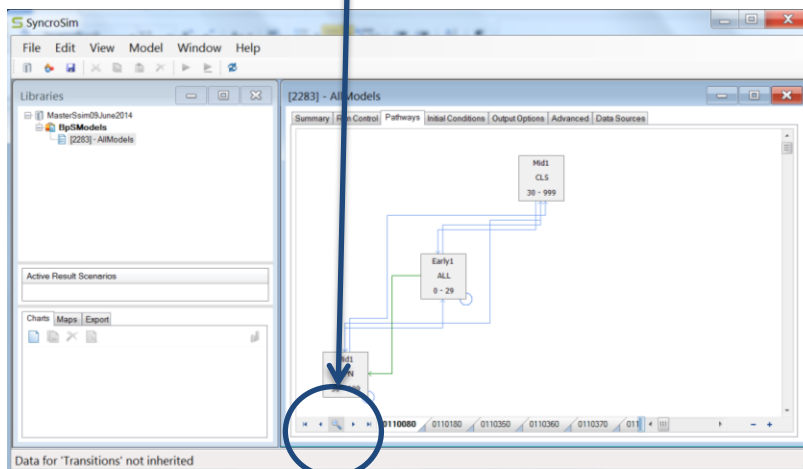


Open the LANDFIRE library

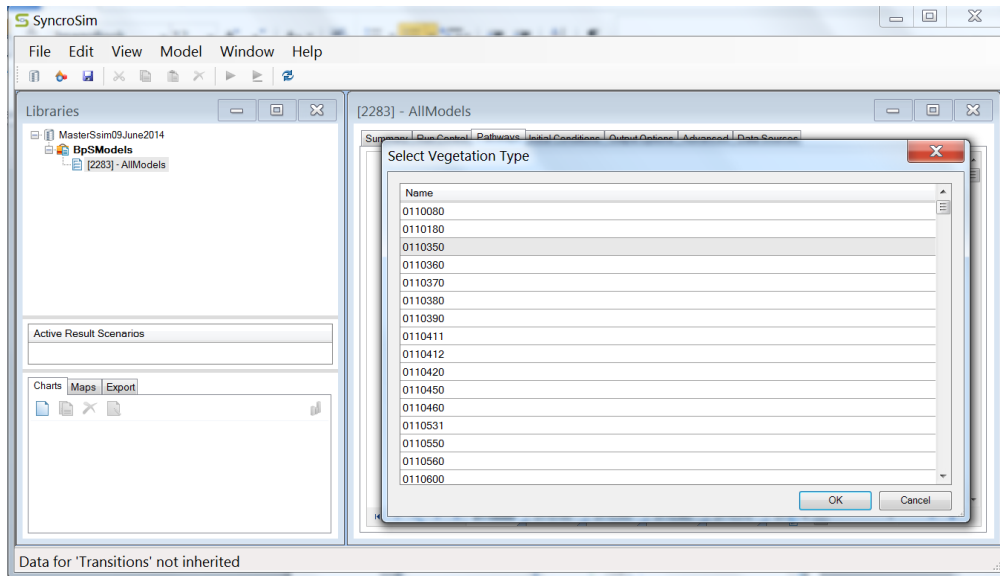
1. From the **File** menu select **Open Library**, navigate to the location of your LANDFIRE .sim database and click the **Open** button.
2. Use the "+" to the left of the library name to expand until the BpSModels project and the AllModels scenarios are visible.

Copy and paste the scenario

1. Double click the **AllModels** scenario to open the scenario window.
2. Select the **Pathways** tab.
3. Click on the **Select Vegetation Type** magnifying glass in the lower left corner of the scenario window.



4. In the Select Vegetation Type window click on the BpS of interest and click **OK**. ST-Sim will open the selected BpS in the scenario window. If you do not know the code for the BpS you want, look it up using the [BpS Search Spreadsheet](#).



Note: We advise against running models in the master LANDFIRE library because the entire library, with over 1,000+ BpS models, will run at once. See the tutorial: **How to copy and paste model in ST-Sim** for instructions on creating a new library with individual scenarios for individual BpS.