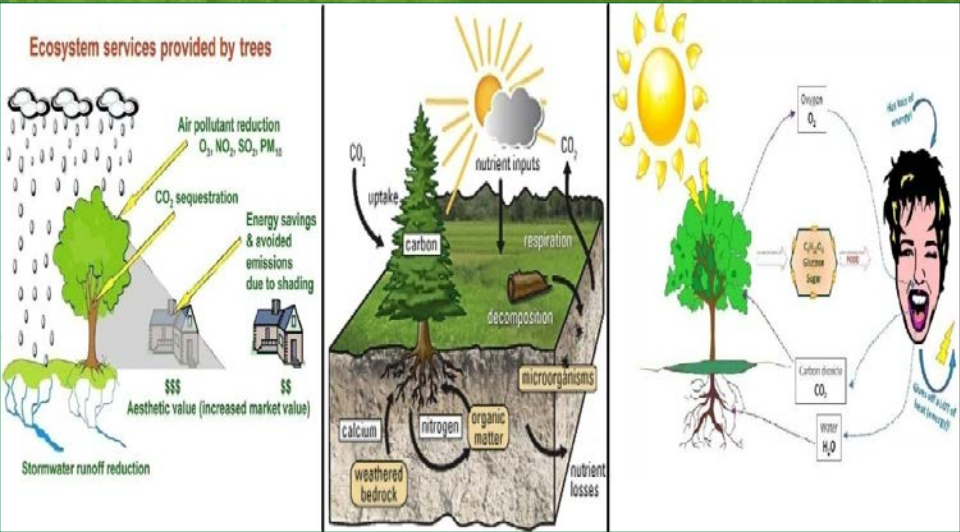
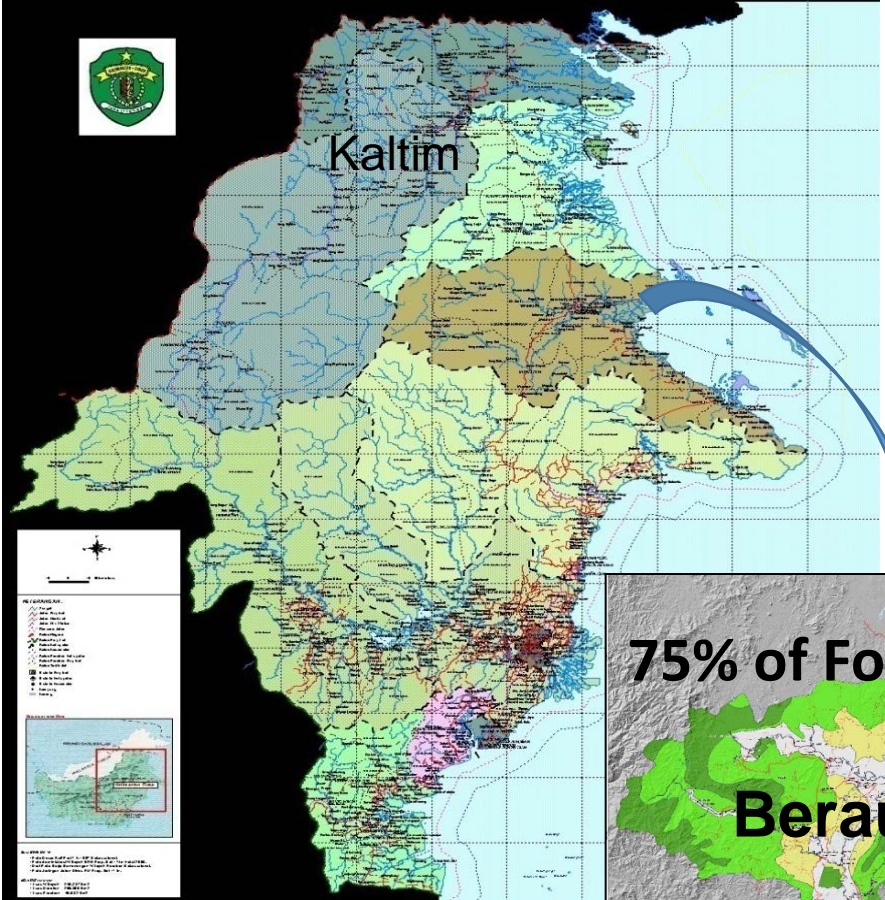
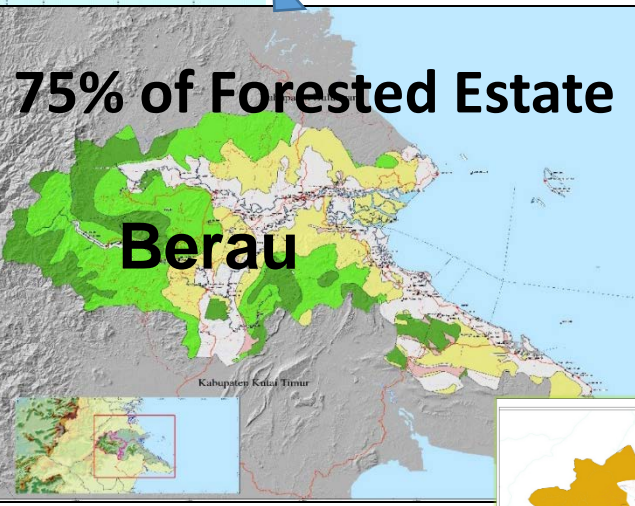


FMU BERAU BARAT STRATEGIES TO REDUCE GHG EMISSIONS



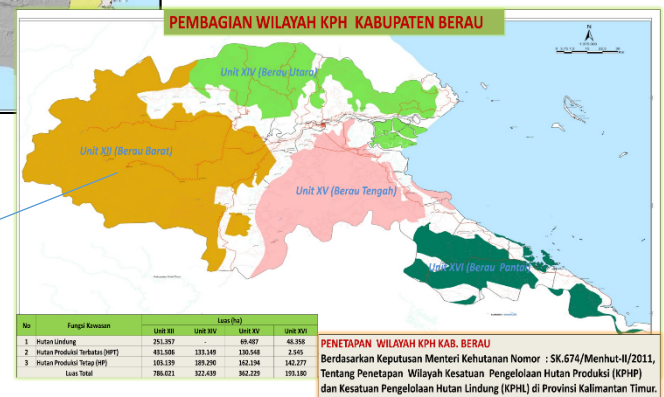


Forested Estate

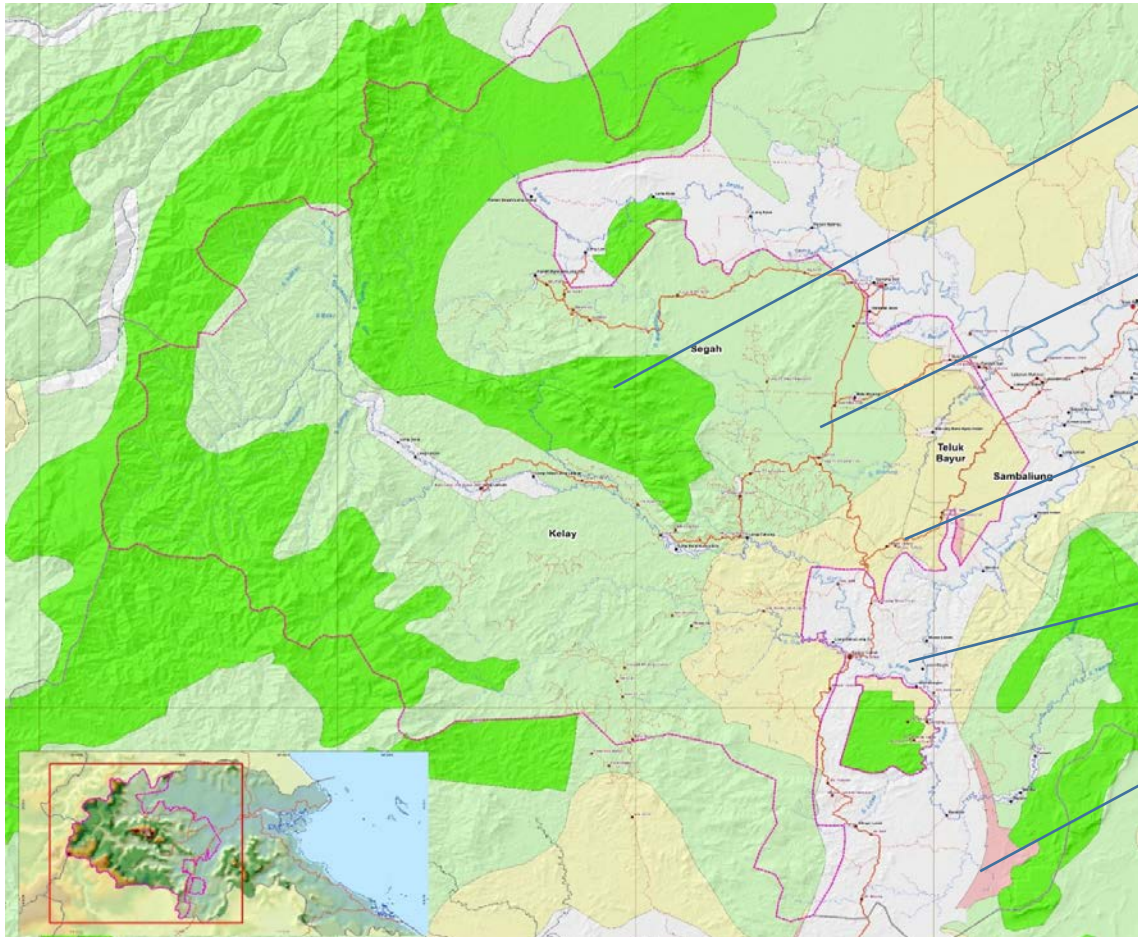


4 FMUs in Berau District
1 FMU has been established

**FMU Berau Barat (786,021 ha)
50% of District's Forest Estate**



Forest Estate Model FMU of Berau Barat



(Protection Forest)
(HL)

(Limited Production Forest)
(HPT)

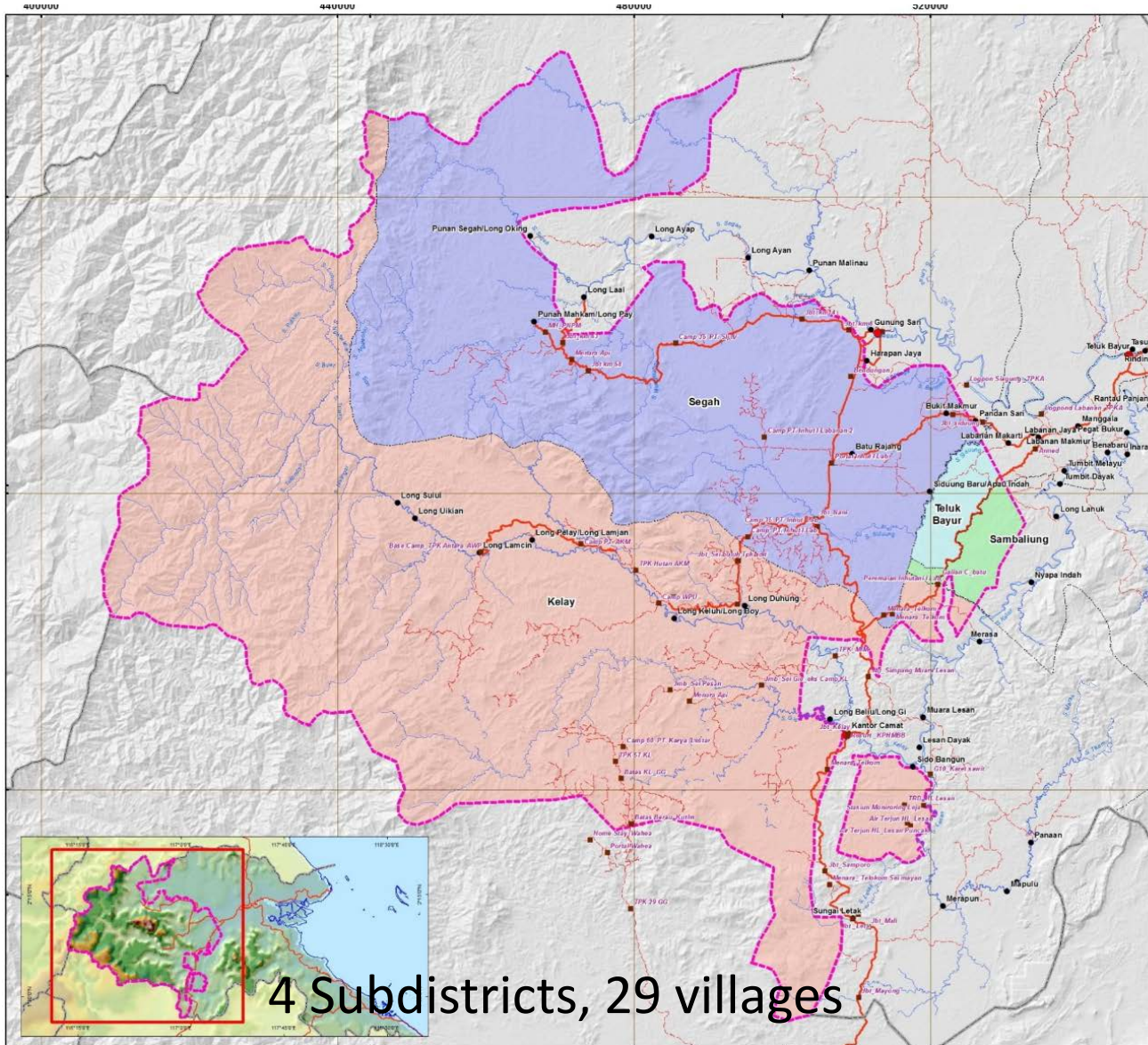
(Production Forest /HP)

Other Land Use (APL)

Convertible (Production
Forest) (HPK)

**FMU Berau Barat (786,021 ha)
50% of District's Forest Estate**

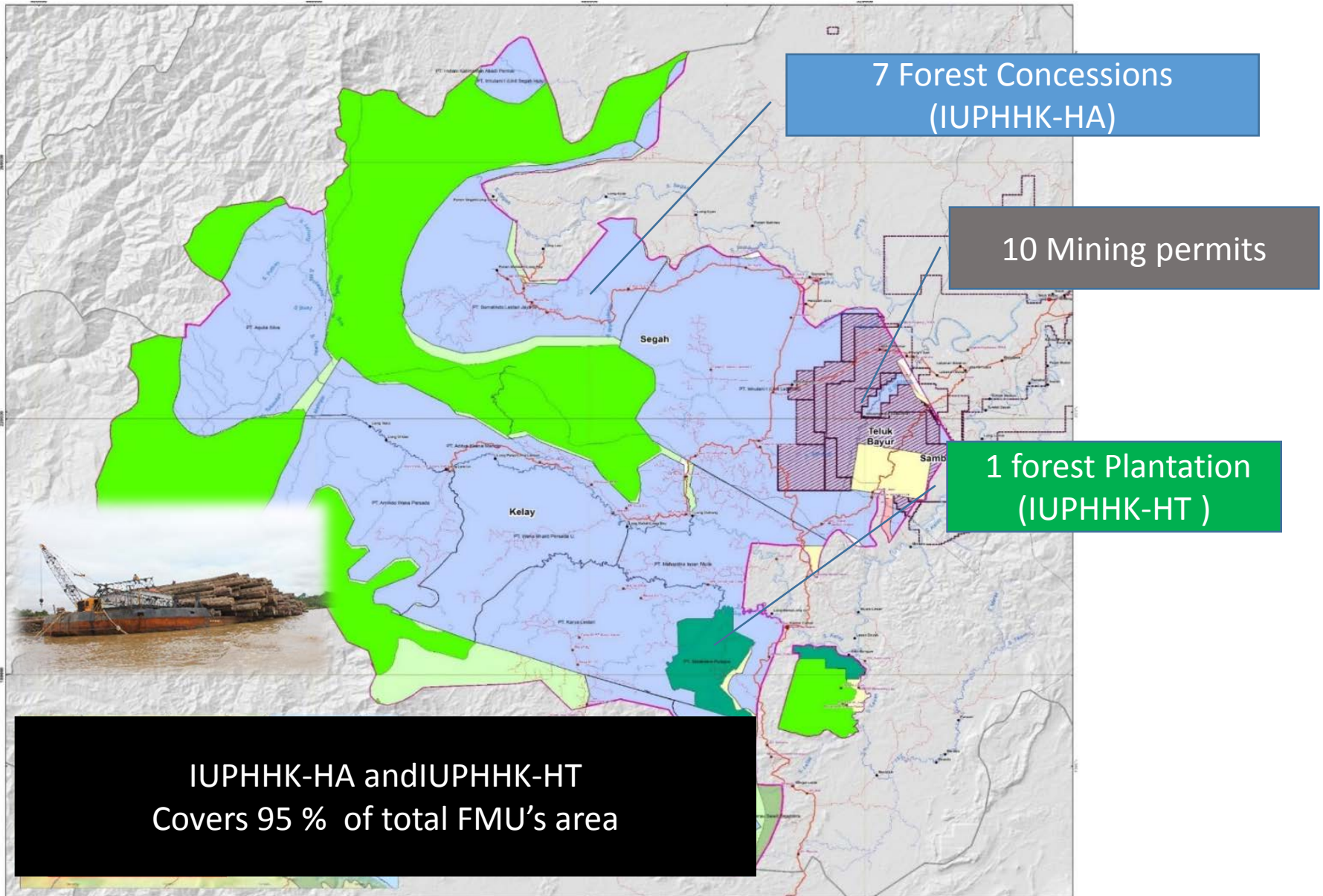
Villages in FMU Berau Barat



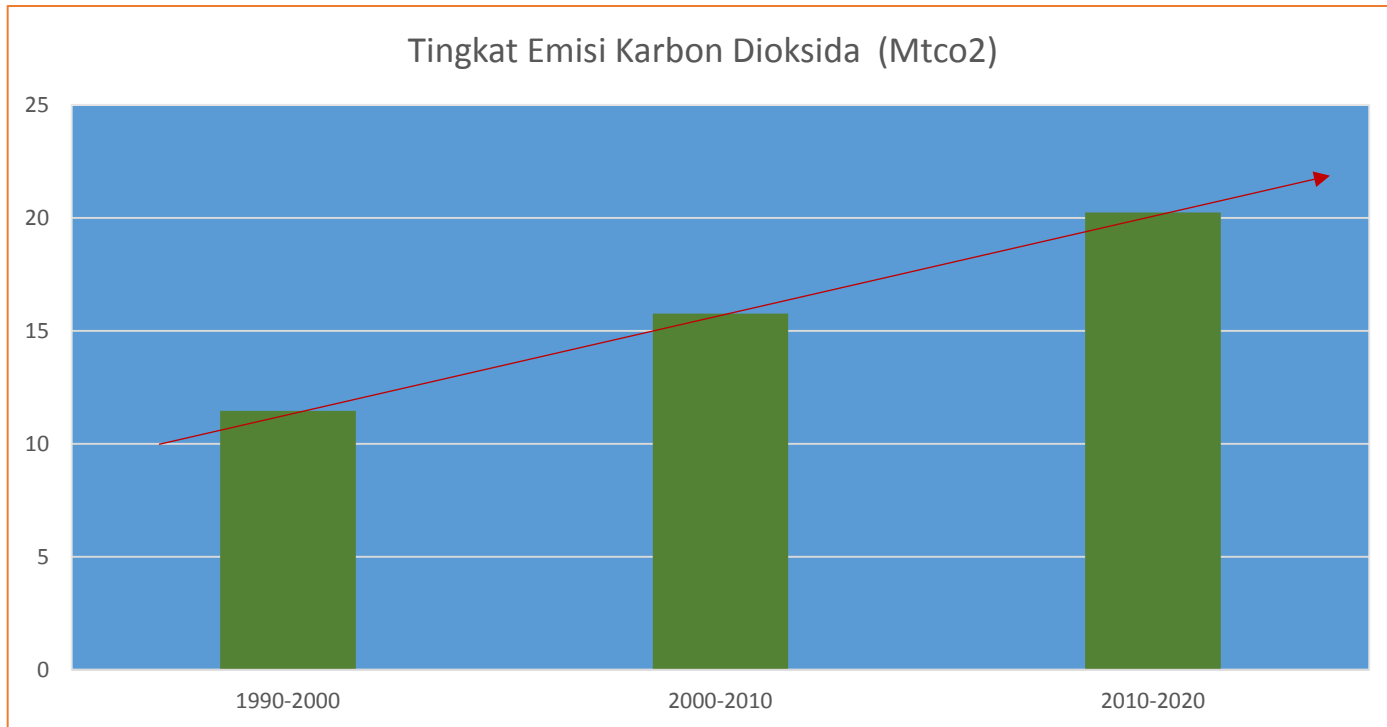
4 Subdistricts, 29 villages



Permits in FMU Model Berau Barat



Emission of FMU Berau Barat



1990-2000 → 11.46 Mt CO₂ (1,15 Mt CO₂/year)

2000-2010 → 15.77 Mt CO₂ (1,58 Mt CO₂/year)

Projection
2010-2020 → 20.06 Mt CO₂
± 2.01 Mt CO₂/year



Village settlement



Farm Land



Mining



Illegal Logging



Encroachment



Industrial Forest Concession



Timber Concession



Oil Palm Concession

Strategies to reduce emission & Forest Governance in Production Forest

❑ **Improving Forest Governance of IUPHHK-HA/HT**

Monitoring/evaluation and promoting harvesting practices (Certification PHPL/FSC and RIL+ Implementation)

❑ **Forest boundary**

Facilitating conflict resolution regarding tenurial, especially between permit holders and communities

❑ **Community empowerment**

Social Forestry, NTFP dan environmental services, partnership among stakeholders (Community-NGOs-companies) Capacity building

❑ **Forest Protection and Natural Conservation**

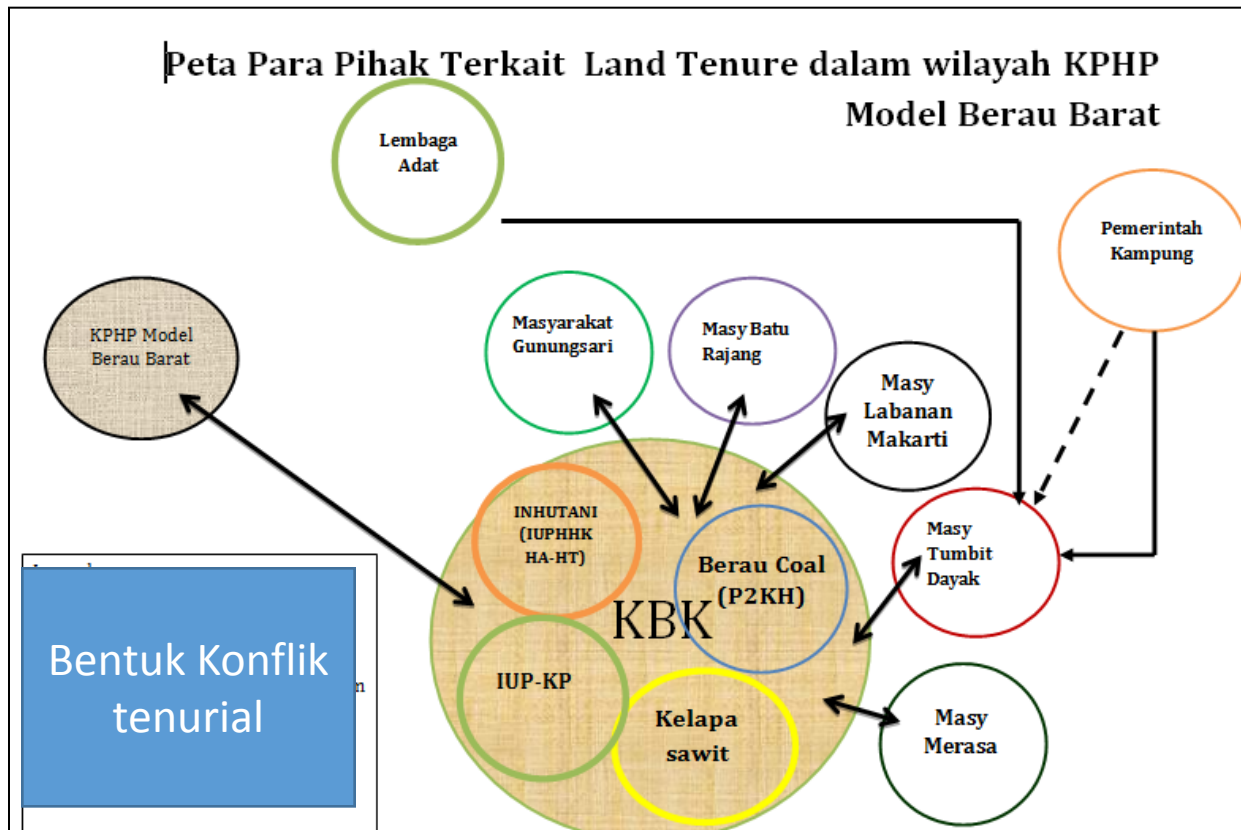
HCVF, Patrolling, Policy and Regulations socializations.

❑ **Forest and Land Rehabilitation**

In critical areas outside concessions, monitoring of rehabilitation in concessions and other permits.

Facilitating Tenurial Conflict

- ❑ Analytical Tools for Land Tenure (RaTa, AGATA, Gender dan HuMaWin),
- ❑ Land Tenure Assessment dan Participative Mapping in 5 villages in PT. Inhutani I Labanan
- ❑ Outreach and communication at local and national level
- ❑ Facilitation and mediation between Forest Concession and Community



FMU Berau Barat Views on the Implementation of RIL-C

- ❑ In line with the FMU's strategies in Forest Governance for REDD+
- ❑ FMU Berau Barat is committed to promote and implement RIL-C as part of REDD+ strategies
- ❑ 2 IUPHHK-HAs are testing RIL-C dan another 3 Units in preparation.
- ❑ FMU Berau Barat is preparing its staff to monitor the implementation of RIL-C MRV, together with TNC
- ❑ RIL-C implementation should be started from the management of the concessions (HR, Financial, commitment)



TERIMA KASIH