

WV WATERSHED ASSESSMENT PILOT PROJECT



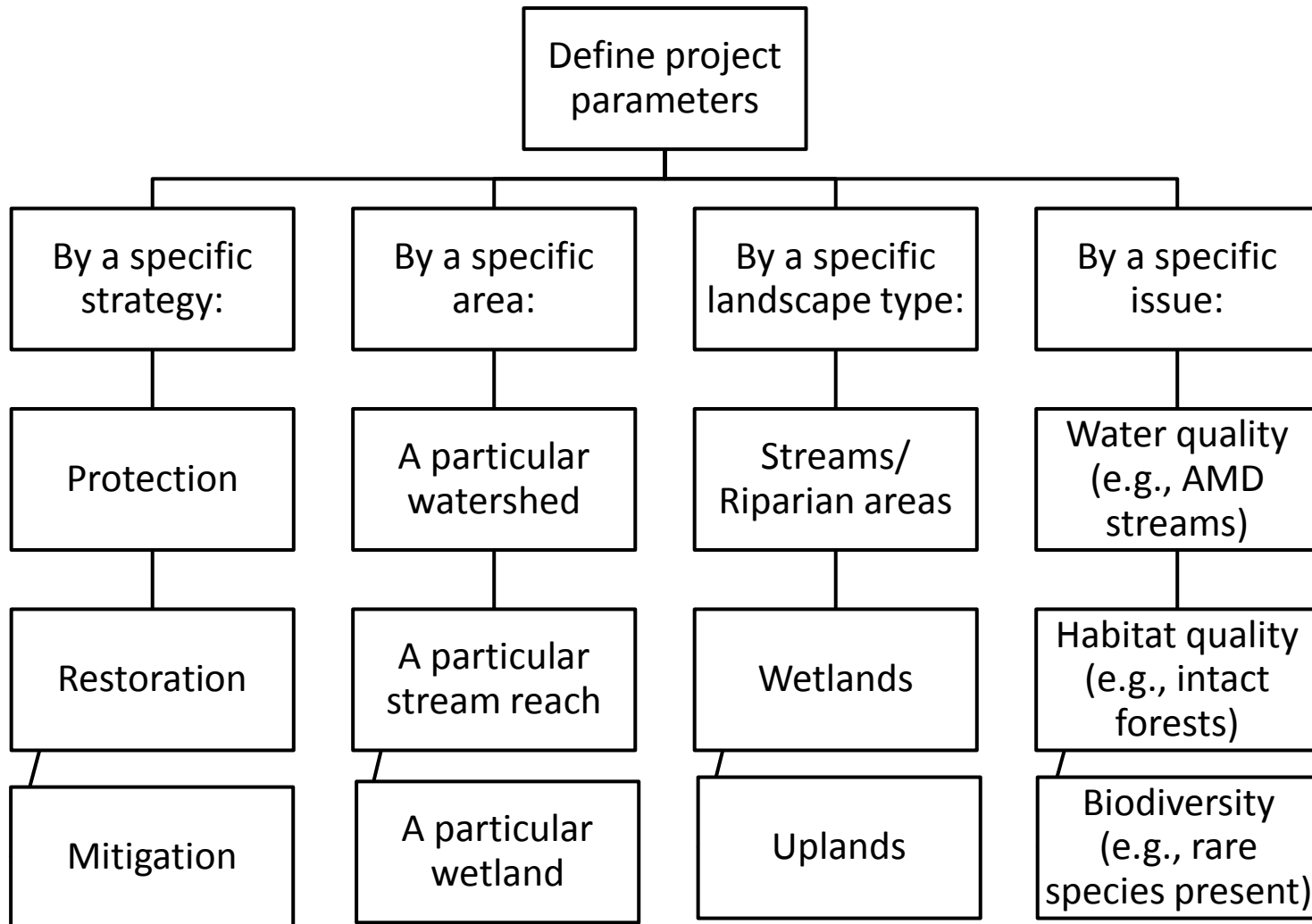
Gauley River ©Kent Mason

Stakeholder & Partner Workshop, Nov. 13th, 2013
Flatwoods Days Inn, WV – Web Tool Demonstration

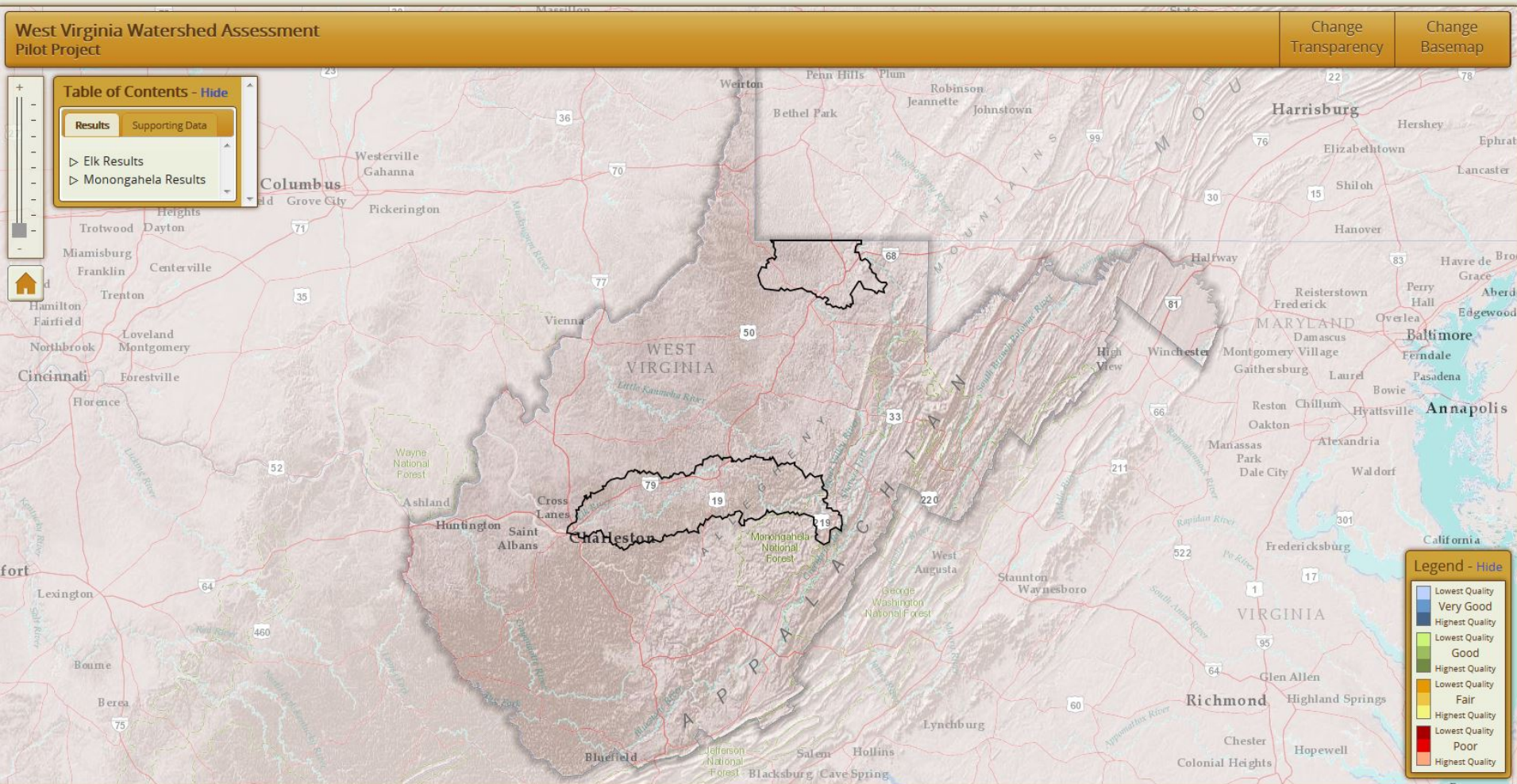
Questions to Keep in Mind

- How do you anticipate using this tool?
 - Start with a project (restoration or protection), then use the web tool to select the best site?
 - If yes: within a HUC8 or within a larger area (region-wide or state-wide)? OR:
 - Start with a location (HUC12 or smaller?), then use the web tool to select the best type of project?
- What is your anticipated work flow?
- How would you prioritize projects?
- Which datasets would be the most useful for your project planning?

Define Project Goals and Objectives



Web tool



Attribute Table Pop-up

Identify Results

▼ HUC12 Level

Streams

Wetlands

Uplands

▼ Catchment Level

Streams

Wetlands

Uplands

Water Quality

Water Quantity

Hydrologic Connectivity

Biodiversity

Riparian Habitat

Impaired streams (303d, AMD, TMDL):

Water quality parameters (pH, sulfate, GLIMPSS, etc):

Land Use in riparian area (ag, graze, developed, natural cover):

Percent imperviousness:

Roads and Rail:

Surface Mining:

Underground Mining

Oil and Gas Wells

Questions to Keep in Mind

- How do you anticipate using this tool?
 - Start with a project (restoration or protection), then use the web tool to select the best site?
 - If yes: within a HUC8 or within a larger area (region-wide or state-wide)? OR:
 - Start with a location (HUC12 or smaller?), then use the web tool to select the best type of project?
- What is your anticipated work flow?
- How would you prioritize projects?
- Which datasets would be the most useful for your project planning?

Break-out Groups

- Take some time and familiarize yourselves with the web tool proto-type
- Within your groups, brainstorm about:
 - What is your anticipated workflow?
 - How would you prioritize projects?
 - Recommendations for functionality
 - Recommendations for datasets



Elk River at Birch Run, WV ©www.over-land.com

THOUGHTS/SUGGESTIONS?