

# Retaining Workforce Capacity for Forest Restoration

## *Strategies and Challenges*



Northwest Fire Learning Network  
Collaborative Forestry Workshop  
November 29<sup>th</sup> , 2012

**Presented by:** Marko Bey, Lomakatsi Restoration Project





# Lomakatsi Restoration Project

Restoring Ecosystems, Sustaining Communities





# Lomakatsi Ecological Workforce Training and Employment Program

Developing workforce capacity to support a long-term restoration based economy for communities throughout northern California and southern Oregon .





# The Central Umpqua-Mid-Klamath Oak Habitat Conservation Project

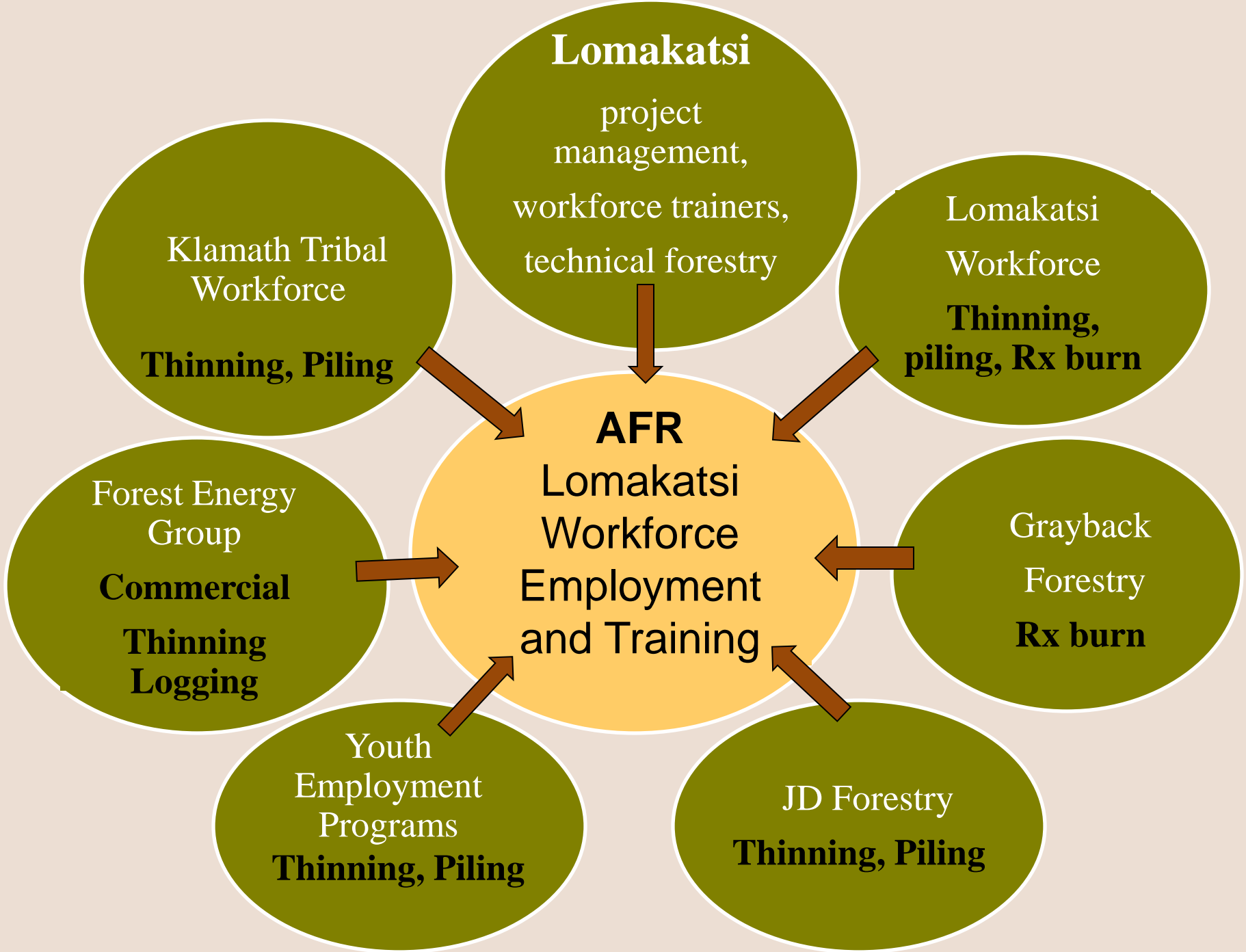




# Stewardship Agreements: Rogue-Siskiyou NF

## Ashland Forest Resiliency Project





Timber  
Operators

**Restoration**

**Workforce  
Training,**

**Capacity**

**Development**

Programmatic  
Administrative  
Staff

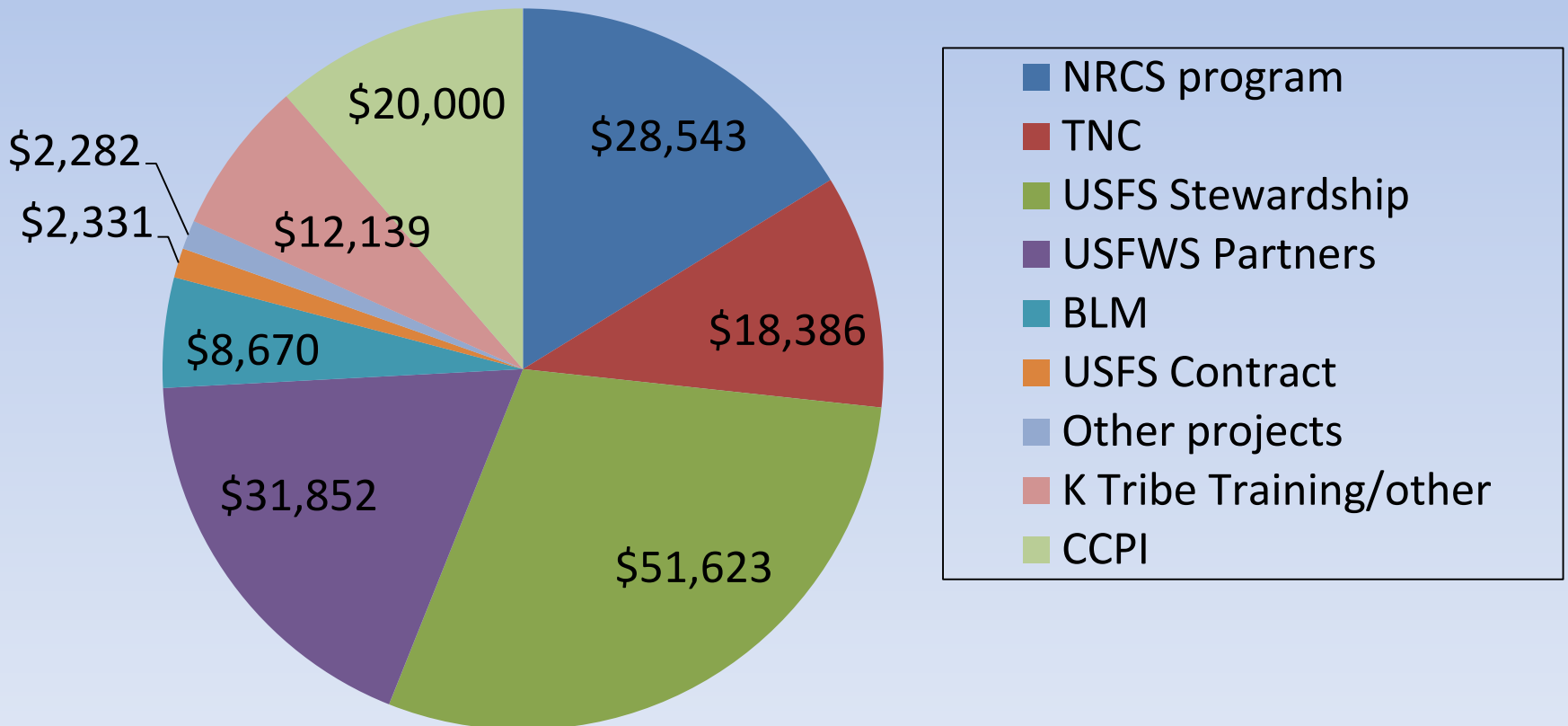
Service Forestry  
Crews

Technical Forestry  
Personnel

# Klamath Tribal Ecological Restoration Workforce Initiative

## Funds secured for Tribal crew employment January & February 2012

**\$175,000**







# Lomakatsi: Forest Restoration Jobs



## Staff and Workforce

## Number of Personnel

Programmatic and Administrative

6

Natural Resource Specialists

4

Restoration Project Management

5

Crew Managers

5

Jackson County Workforce

15

Josephine / Douglas County  
Workforce

15

Klamath Tribal Workforce

15

**Total: 65**



# Lomakatsi: Forest Restoration Jobs (cont.)

Youth Conservation Corps Employment Programs	Number of Personnel
Northwest Youth Corps	20
Jefferson Conservation Corps	7
Klamath Basin Tribal Youth Employment Initiative	10
Job Council	10
	<b>Total: 47</b>



## Lomakatsi: Forest Restoration Jobs (cont.)

Subcontractor	Contractor Type	Community Location	Personnel / Seasonal Jobs
Forest Energy Group	Logging	Gold Hill	10
Don Hammond Inc.	Logging	Butte Falls	10
Pinnard Logging	Logging	Cave Junction	5
Inland Timber	Logging	Takilma	2
Brierville Fire & Forestry	Logging / Service	Ashland	3
JD Forestry	Service	Medford	20
Shelterwood Forestry	Logging / Service	Yreka	7
Grayback Forestry	Service	Merlin	40
Ponderosa Ref.	Service	Central Point	40

**Total: 137**



# Lomakatsi: Forest Restoration Jobs in the Rogue Basin (cont.)

## Indirect Jobs: Processing Facilities and Secondary Manufacturing

- Superior Lumber
- Rough and Ready Lumber
- Biomass One
- Murphy Veneer
- Mac's Creations
- Oregon West Lumber
- Rogue Valley Fuel
- Local artists and crafters



# Developing Klamath Tribal Workforce Capacity for the Implementation of Ecosystem Restoration in the Upper Klamath Basin

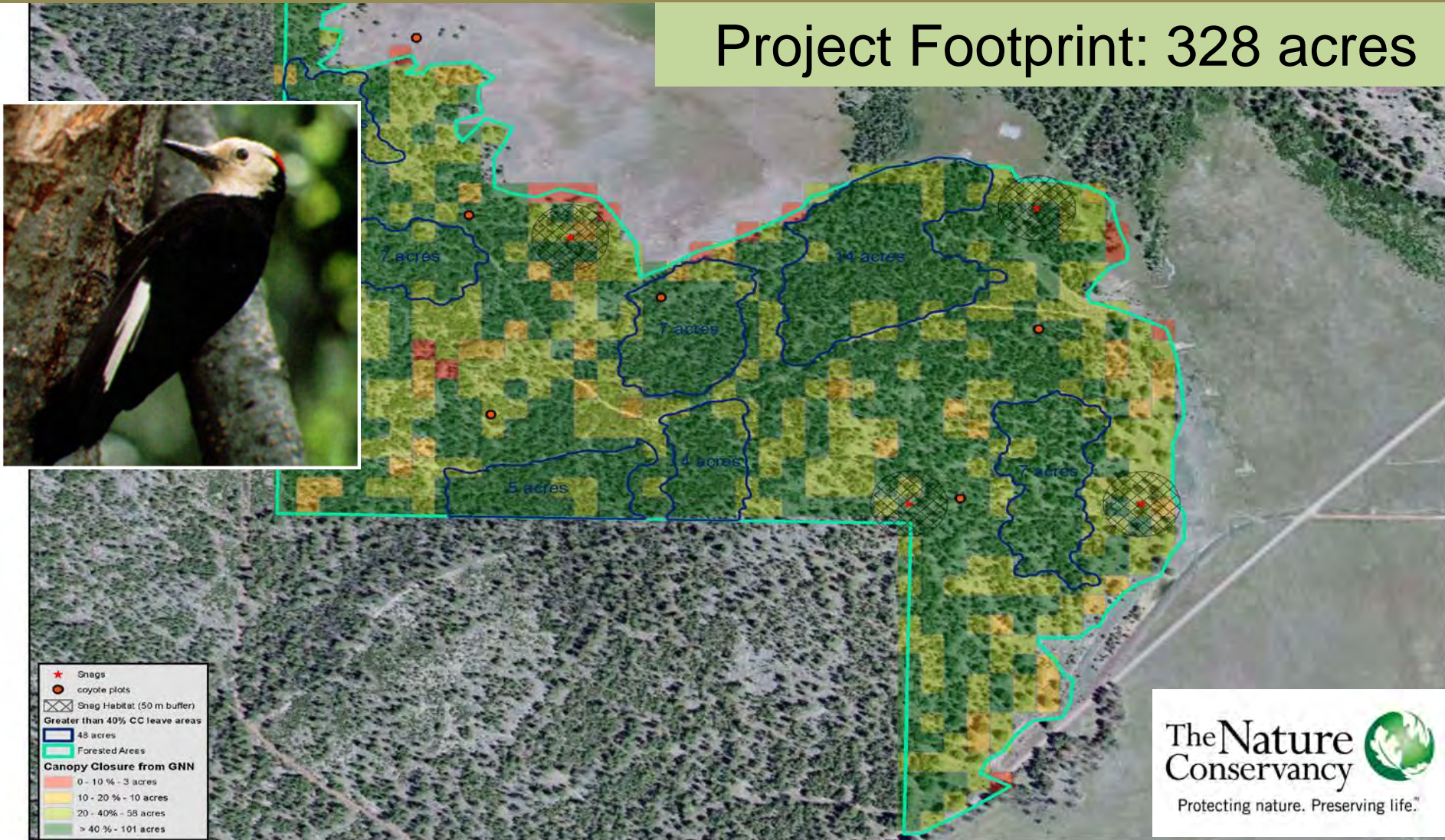




# Sycan Marsh Forest Restoration Project

- Managing ponderosa pine for white-headed woodpecker and restoring aspen stands.

Project Footprint: 328 acres



# Sycan Marsh Forest Restoration

## Service Work

- development, layout, contract administration = \$10,500
  - thinning, meadow restoration = \$38,125
- Subtotal=\$48,625**

## Commercial Work

- Road fees, repairs, maintenance= \$18,262
- commercial thinning, logging, biomass= \$274,000
- Hog fuel grinning and transport= \$18,600

**Total Project Cost=\$359,487**

**Project Income= \$282,500**

**Project Deficit= \$76,987**



# Klamath Tribes' Forest Restoration Master Stewardship Agreement (MSA) Fremont-Winema NF

The MSA serves as the legal mechanism and framework for conducting collaborative ecosystem management projects.

- Defines the broad geographic area where projects will be conducted
- Outlines purpose, mutual interests and specific partner roles



# KLAMATH TRIBES' FOREST RESTORATION MASTER STEWARDSHIP AGREEMENT



Technical support,  
Project Design,  
Administrative  
Oversight

Senior Partner,  
Fiscal lead,  
Project Design,  
Technical Expertise



Contracting,  
Workforce Training  
& Development,  
Technical Expertise

Multi-Party  
Monitoring,  
Science delivery,  
Technical Expertise



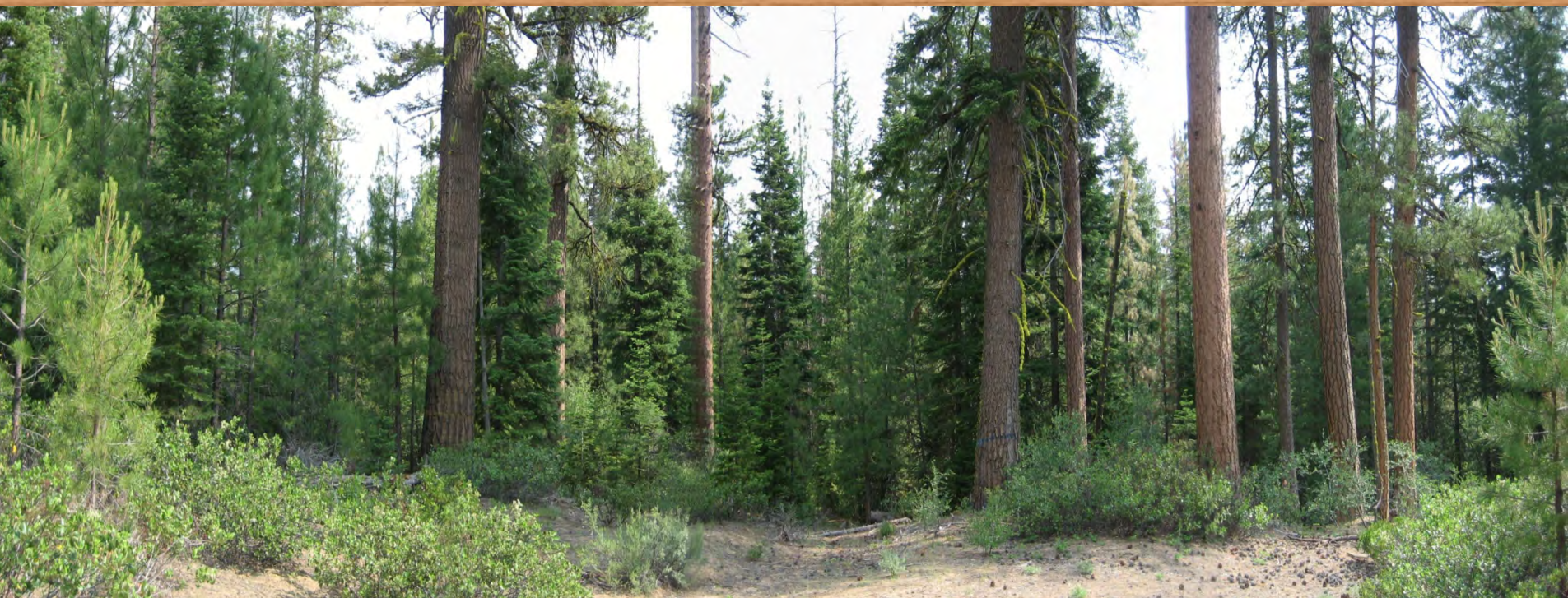


# Black Hills Stewardship Agreement

## Ecological Forestry Implementation

**Commercial Items.** Logs and biomass removal on approximately 9,000 acres.

Restoration byproducts (log sales) will generate revenues to pay for additional restoration work.





## **Black Hills**

**Stewardship Agreement**

**Phase 1: 1,100 acres**

### **Retained Receipts**

**(profit reinvestment)**

**Income: \$880,000**

**Expense: \$775,000**

**Net Profit : \$105,000**

### **Partners Matching Funds**

**\$127,000**

**development, layout,  
marking, cruising ,design  
and monitoring**

### **Commercial Thinning**

**Log sales pay for the  
commercial harvest and  
generate Net Profit.**

**Contractor Selection  
for commercial thinning**



# Black Hills Stewardship Agreement

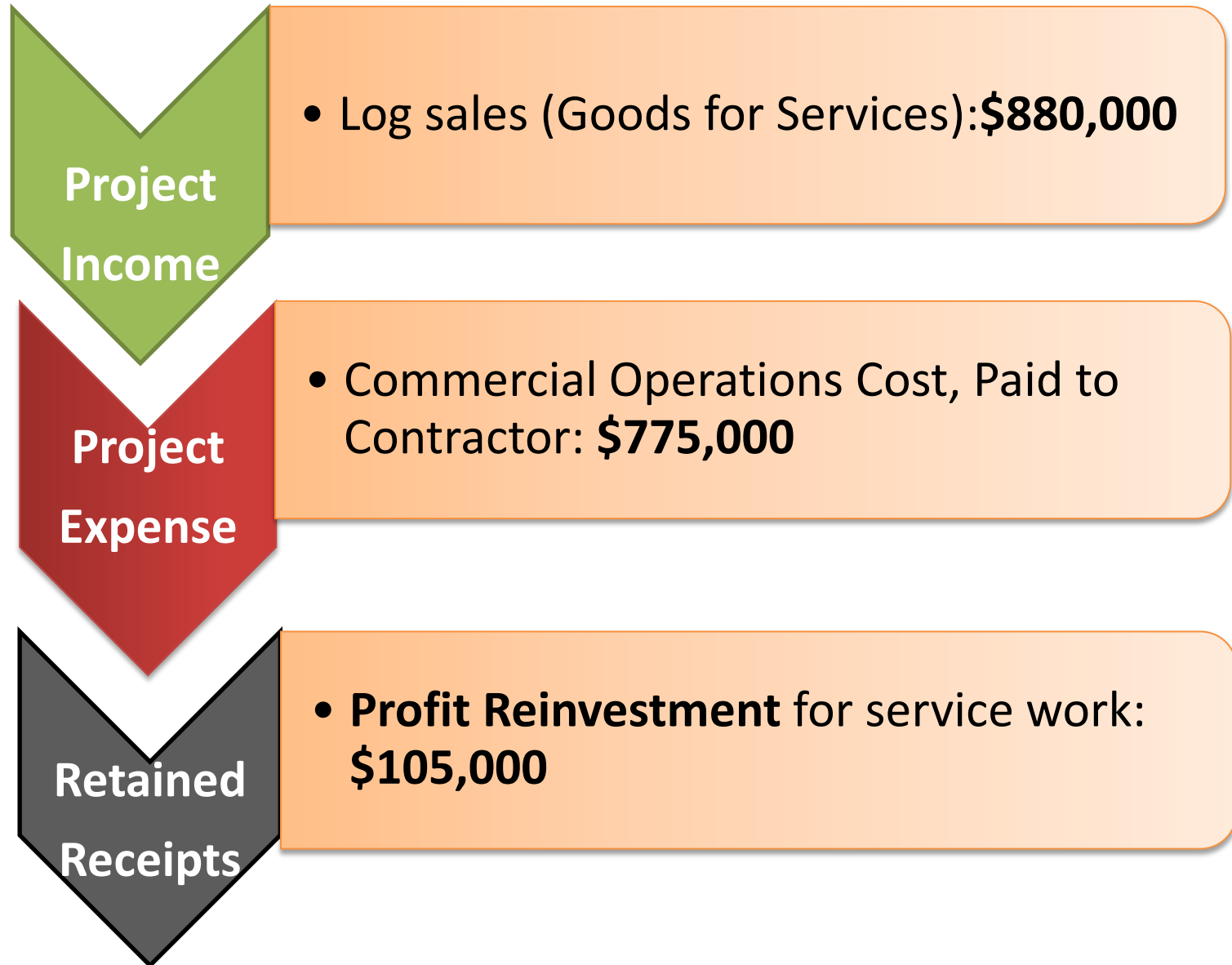
## Income

- Volume per acre = 2,500 BF (2.5 MBF)
- Total volume = 2,750 MBF
- Anticipated Revenue (average all species) \$320 per MBF
- **Total Project Income (\$320 X 2,750): = \$ 880,000**

## Expense

- Logging / biomass Cost (Stump to Truck), = \$555,500
  - Haul Cost = \$220,000
- Total Expense: \$775,500**

# Black Hills Stewardship Agreement





# Creating Green Jobs, Restoring Forests and Watersheds



**“As the restoration economy blossoms, the value of our investments are starting to be recognized in local communities across the state for their economic impact and benefits” –Tom Byler, Executive Director, Oregon Watershed Enhancement Board**