

Accelerated Recruitment Large Wood Workshops



October 17 and 23, 2013

**October 17th: 16 in attendance;
October 23rd 25 in attendance**



Opening Discussion

- Accelerated recruitment work since 2006.
- Two ways: fell trees; RTS winching/dragging/ wedging.
- Look for sites where “soft” anchoring or wedging opportunities exist.
- Minimum length: 1.5 times bankfull channel width.
 - Maximum bankfull channel width: 50-60 ft.
- Works better for large ownerships.
- No infrastructure problems to date (small storms).
- One tool in the toolbox.
- Very inexpensive compared to traditional anchored structures.
- Description of Pudding Cr/Caspar Cr BACI study.
 - Treating 80% of Pudding Cr channel; see if can get >20,000 smolts.

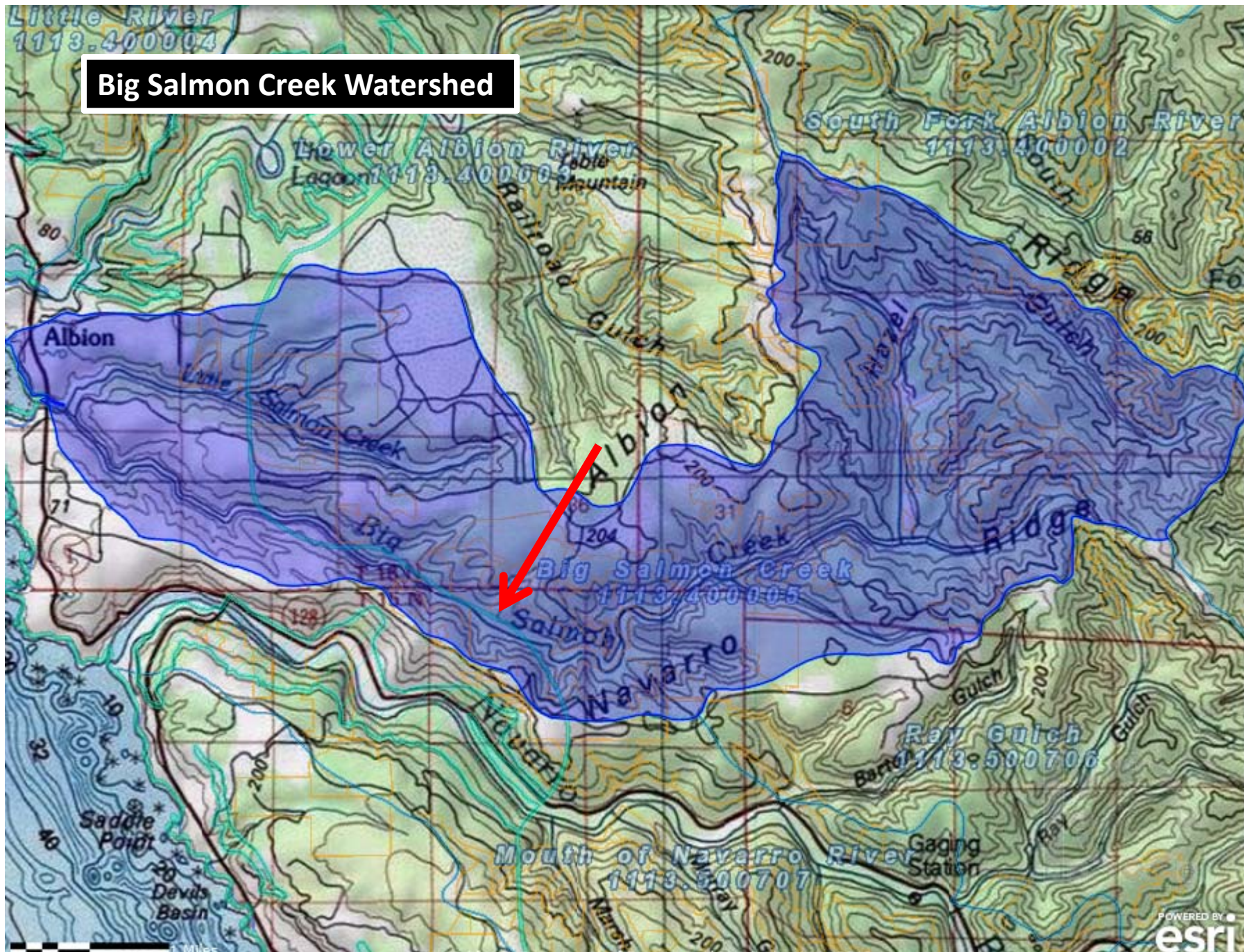




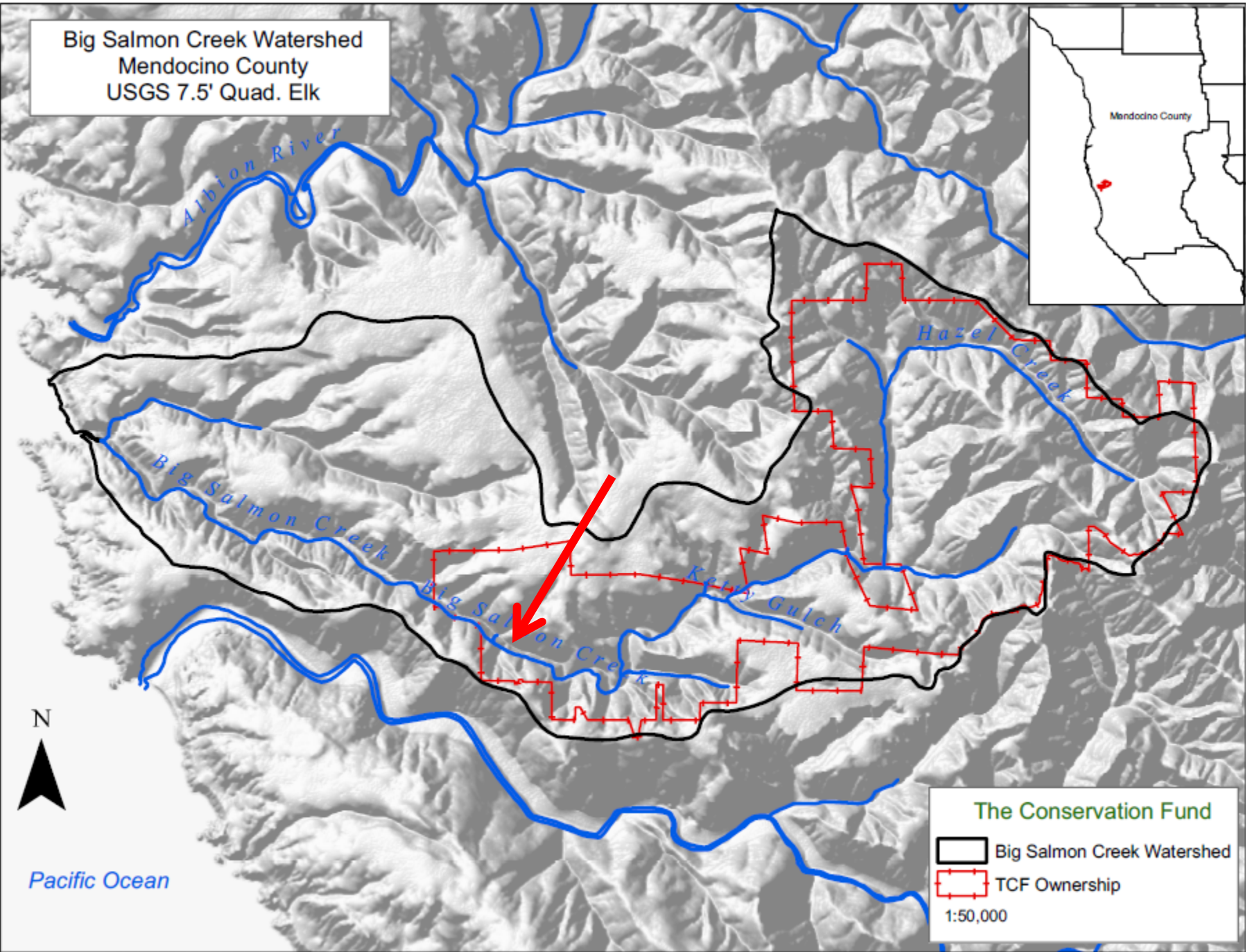
Case Study: Big Salmon Creek

- Small coastal watershed in western Mendocino County near Albion; good coho salmon stream.
- 6.5 miles of channel treated in 2012; 178 sites (average every ~200 ft).
 - 4 miles of Big Salmon Creek channel.
 - 2.5 miles of Hazel Gulch (major tributary).
- 377 pieces of wood installed.
- Big Salmon Creek bankfull channel width = 29 ft.; planning watershed drainage area ~8,600 acres.
- Photo point monitoring for all sites; 85% of wood pieces tagged.
- One overwintering period with a 2 yr RI event (bankfull flow).
- Total FRGP grant request \$72,717 (landowner cost share [soft] = \$95,000).
- The Conservation Fund—big proponent of this work as long as DFW funding (FRGP grants) available.

Big Salmon Creek Watershed



Big Salmon Creek Watershed
Mendocino County
USGS 7.5' Quad. Elk

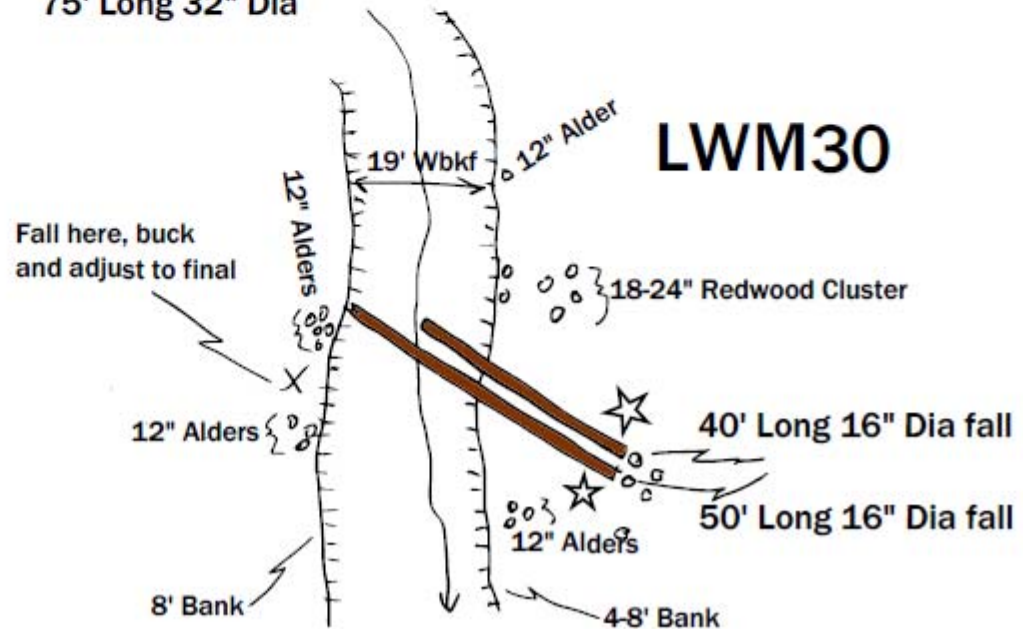
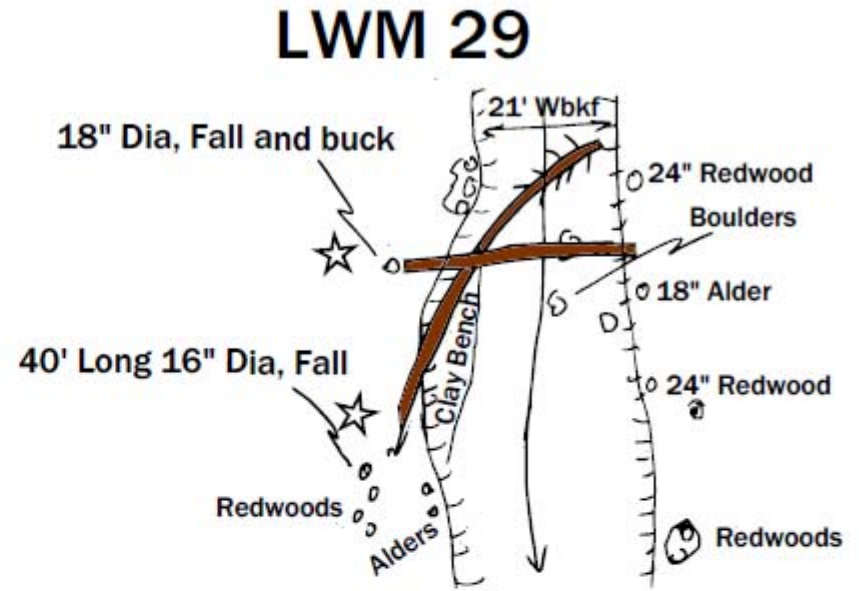
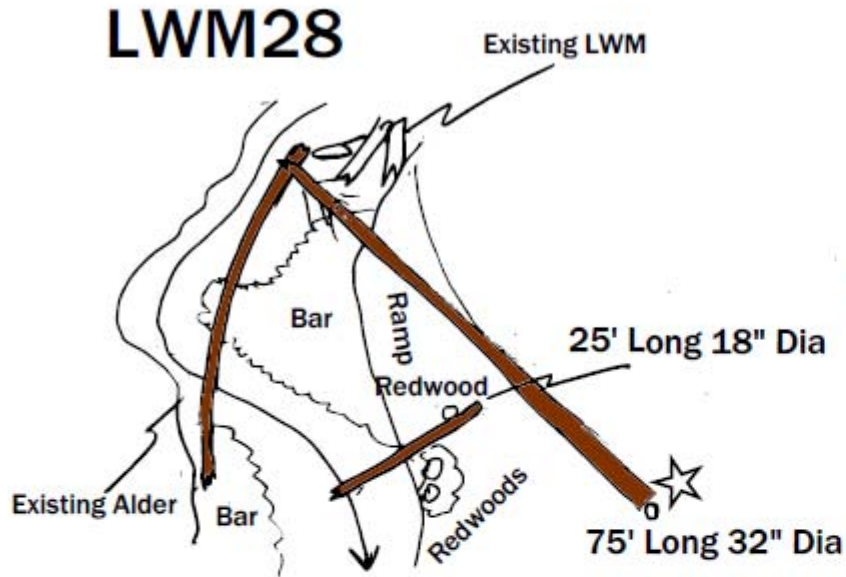


The Conservation Fund

- Big Salmon Creek Watershed
- TCF Ownership

1:50,000

Sample Site Sketches



Rubber Tired Skidder Log Placement



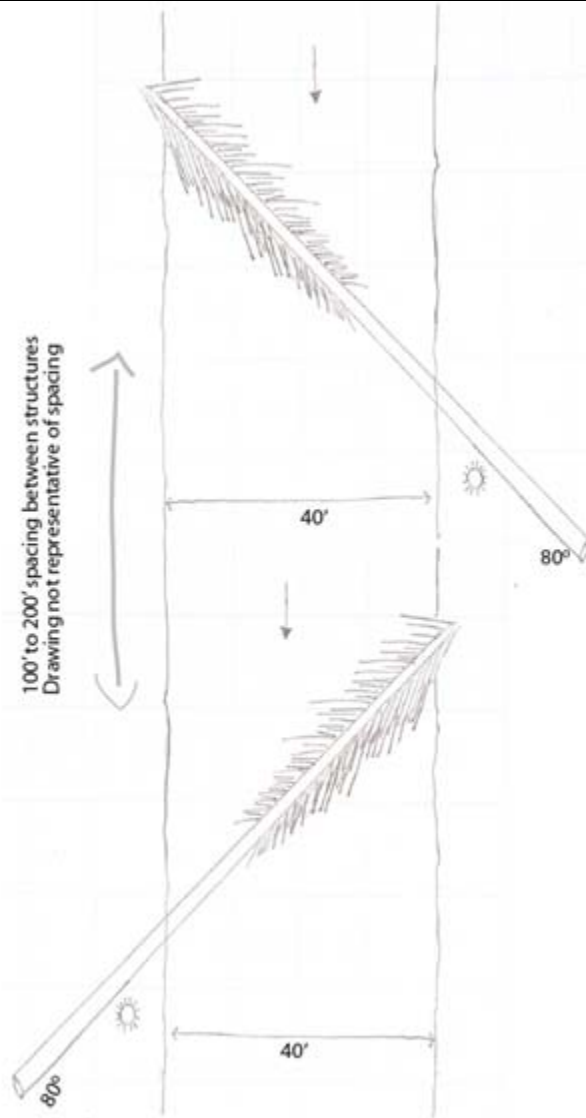


Site 1
36 in DF
spanner cut



Site 2
40 in RW felled (upstream 45 deg),
partly broke, bar building above





**Upstream 45
degrees;
Log clusters,
1-2 trees,
No rootwads**



Site 3
36 in RW blowdown--
RTS installed; GF adjusted

**Site 4—Complex site.
Felled 30 in RW—broke,
salvaged 2 logs;
salvaged old DF log**



Site 4—Top view







Site 5
Downed log pushed into the
channel, noted aggradation
after installation



Site 6
Single 24 in RW felled off
clump; RTS winched and
wedged log



Site 7
Single 30 in RW felled,
upstream 45 deg; peeled
off a RW clump



Site 7
Alternate view of felled
30 in RW log



Site 8
Felled 30 in RW; downed
GF installed



Site 9
36 in RW felled
upstream 45 deg



Site 9
36 in RW felled
upstream 45 deg;
alternate view



Site 10
30 in RW felled and
broke



Monitoring Results for Big Salmon Creek-- Mainstem

BIG SALMON CK MAINSTEM SUMMARY OF ALL YEARS WITH % CHANGE (2012 v. 2013)											
	% Runs by Total Length	% Pools by Total Length	Total Pieces of LWD (6'-19')	Total Pieces of LWD (≥20')	Avg Mean Width Pools	Avg Mean Depth Pools	Avg Residual Max Depth Pools	Total # of Pools 3.0' - 3.9'	Total # of Pools ≥ 4.0'	Avg Shelter Rating Pools	Total LWD Vol (cu ft)
2012	39	32	440	170	15.7	1.4	2.6	23	10	59	23512
2013	50	30	490	420	19	1.4	2.8	27	14	88	38846
% Change	28%	-7%	11%	147%	21%	0%	8%	17%	40%	49%	65%
<i>Pools =2' deep or greater</i>					<i>Bankfull Width lower =29' upper =23'</i>						

Acknowledgments

Thanks to:

- **Patty Madigan, MCRC**
- **Chris Blencowe, Blencowe Watershed Management**
- **Scott Kelly, TCF**
- **Jen Carah, TNC**
- **Dave Wright, CTM**
- **Lisa Bolton, TU**