

A Salt Marsh Advancement Zone Assessment of New Haven, Connecticut



Front cover image: Open space and unprotected parcels critical to the conservation of marsh advancement corridors in New Haven; from the accompanying Comprehensive Map Book of New Haven, Connecticut.

Table of Contents

Introduction.....	2
Suitable vs. Unsuitable Advancement.....	3
Marsh Advancement vs. Wetland Extent.....	3
Planning for the Future.....	3
Total Marsh Advancement.....	4
Marsh Advancement in Open Space Parcels.....	4
Total Advancement in Open Space Parcels.....	4
Suitable Open Space Advancement by Owner.....	5
Suitable Advancement by Open Space Parcel.....	6
Marsh Advancement in All Parcels.....	6
Total Advancement in All Parcels (OS vs. Non-OS).....	7
Suitable Advancement by All Parcels.....	8
Appendix – Map Book.....	9

RECOMMENDED CITATION:

Ryan, A. and A. W. Whelchel. 2014. A Salt Marsh Advancement Zone Assessment of New Haven, Connecticut. The Nature Conservancy, Coastal Resilience Program. Publication Series #1-S, New Haven, Connecticut.

ACKNOWLEDGEMENTS:

This effort was made possible through partial funding by the Horizon Foundation, Vervane Foundation, and the McCance Foundation Trust.

Introduction

In 2006, The Nature Conservancy established the Coastal Resilience Program (www.coastalresilience.org) that provides tools and a solution framework to reduce the ecological and socio-economic risk of hazards and comprehensively improve community resilience. The Program focuses on helping decision-makers explore locally relevant, downscaled, flooding scenarios from sea-level rise and/or storm surge, analyze the potential ecological, social and economic impacts of each scenario at a local, regional, and state scale, and facilitate solutions to address these issues. Since 2006, The Nature Conservancy has assisted many coastal and inland communities in Connecticut by providing this critical information and a comprehensive, community-based process that improves overall resilience and sustainability.

There is a universal recognition by coastal and inland communities in Connecticut and elsewhere that natural infrastructure – wetlands and forests - is a cost effective, long-term part of the solution to help protect people, infrastructure and natural systems from extreme weather and climatic change. Fortunately, our state has a remarkable diversity and abundance of natural resources that provide habitat for wildlife and fisheries, enhance the aesthetics and quality of life for residents, and, of course, defend the shoreline and rivers against storm surge, inland flooding, and sea level rise. The presence of natural resources across the state – in particular salt marsh, beaches/dunes, forested headwaters, and river floodplains – is the result of previous recognition and commitment to long-term conservation and the requisite balance with socio-economic growth. In order to maintain these natural resources it will require 1) routine and on-going management activities as well as the restoration of degraded areas, 2) forward-looking planning to accommodate changes in habitat composition and location due to climatic change and 3) enforcement, modification and/or development of new land use policies and growth strategies. Opportunities also exist to account for and integrate the services or co-benefits provided by natural infrastructure via new development, redevelopment, or realignment activities. Economically important services/co-benefits from natural infrastructure include wave attenuation, improved water storage and filtering of pollutants from surface runoff, erosion control, and improved aesthetics and desirable public amenities. Taken in total, the immediate and longer-term management of natural infrastructure by the state, towns, private property owners, non-profit organizations, and others will help to reduce hazard risk and improve resilience across Connecticut.

While longer-term changes in temperature and precipitation patterns will alter the species composition and type of habitats in a given location, the more immediate implication is the upslope advancement of habitats such as salt marsh in response to continued sea level rise. Sea level rise and the impacts of flooding have and will continue to alter the presence and abundance of natural resources in Connecticut. One of the most noticeable changes is occurring at the shoreline's edge where salt marsh is in the process of advancing upslope into areas now considered uplands. In order to clearly identify where this will occur along New Haven's shoreline, The Nature Conservancy presents the following report to assist with future planning for natural resources in the context of overall risk reduction and resiliency improvement for the community. Ultimately, it is our hope that this report will serve to inform the community about

future marsh advancement locations, current land use of those locations and which parcels are critical to ensure the persistence of natural resources in New Haven longer term.

The Salt Marsh Advancement Model used in this analysis was co-developed by The Nature Conservancy and the University of Connecticut's Department of Natural Resources Management and Engineering. A full discussion of the Model and underlying methodology is beyond the scope of this report, but a few important details are needed to put the following analysis into context and define how to use the results for planning and implementation.

Suitable vs. Unsuitable Advancement

In the following figures and tables suitable advancement areas are abbreviated as “Yes” and unsuitable areas are abbreviated as “No”. Suitable areas are classified based on the current land cover type - “forest” or “agrigrass” - and as such are expected to convert to salt marsh as hydrologic conditions change due to sea level rise, in the absence of further land use conversion. Land cover types classified as “urban” (i.e. roads, buildings, runways, parking lots, etc...) are considered to be unsuitable for salt marsh advancement at this time. Though much of our analysis is grouped by parcel ID and associated characteristics, these classifications – suitable and unsuitable – exist independent of the parcel boundaries. In other words, a given residential parcel can have both suitable (lawn) and unsuitable (building footprint) advancement areas.

Marsh Advancement vs. Wetland Extent

There is a key distinction in this report between the current wetland extent in a municipality and the marsh advancement areas analyzed herein. Marsh advancement areas include only the future projected wetland extent clipped to current upland land cover. Therefore, no assumption should be made about net gain or loss of current wetland extent based on this advancement area analysis. Another key consideration is that in some cases the identified advancement area will include land that converts to wetlands and subsequently to open-water over time. This further demonstrates that net change in both existing and future wetland extent should not be inferred from our analysis.

Planning for the Future

The advancement and eventual establishment of coastal marshes will occur over the course of several decades and as such our analysis extends out to the 2080s. The rate of change is slow and decadal, yet inevitable. There is an abundance of existing property, infrastructure and natural infrastructure assets clustered along the Connecticut coast and communities will need to formulate growth and realignment plans well in advance of the 2080s scenario presented here. The following data analysis and associated map book (Appendix) can assist with a resilient transition through the presentation of marsh advancement areas and an accounting of the projected changes to coastal property.

Total Marsh Advancement

The full extent of marsh advancement in New Haven by the 2080s is projected to be 1,674.9 acres, with 820.6 acres (49.0%) having suitable (Yes) land cover for wetland advancement. The other 854.3 acres (51.0%) are occupied by built structures and associated infrastructure and are unsuitable for marsh advancement (No), currently.

Total Marsh Advancement by 2080s		
Marsh Adv	Acres	Percent (%)
Yes	820.6	49.0
No	854.3	51.0
Total	1,674.9	100.0

Marsh Advancement in Open Space Parcels

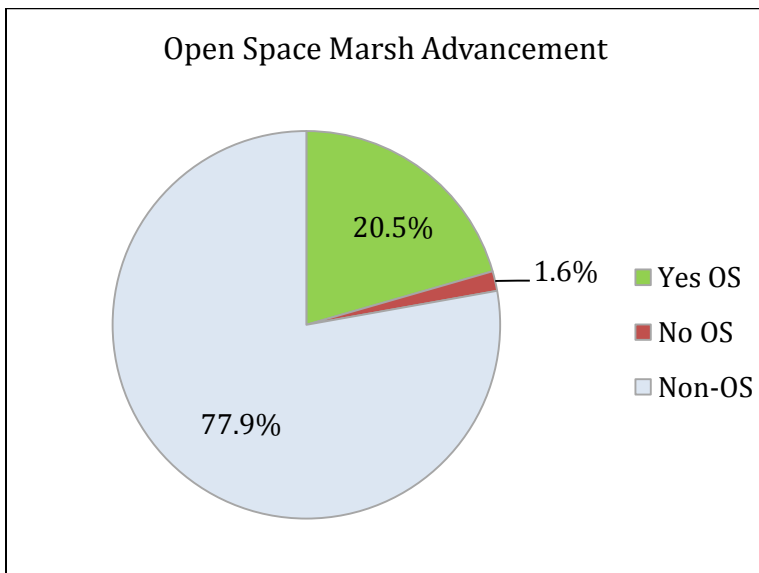
Open space (OS) properties are a critical component of long-term community resilience because they currently have little to no development and are the most likely areas to remain undeveloped through the 2080s. The recognition of the role of these parcels in future wetland extent and improved resilience in New Haven is vital for strategic land management, economic development, and planning.

Total Advancement in Open Space Parcels

The following three categories are considered in this section:

- Yes OS: Areas of open space suitable for marsh advancement
- No OS: Areas of open space unsuitable for marsh advancement
- Non-OS: Unprotected areas both suitable and unsuitable for marsh advancement

New Haven’s open space parcels contain 371.7 acres of total marsh advancement area with 344.1 acres (20.5% of total) having a land cover suitable for future wetlands (Yes OS). Further analysis of the 1,303.2 acres of unprotected parcels (Non-OS) can be found in the following “Marsh Advancement in All Parcels” section.

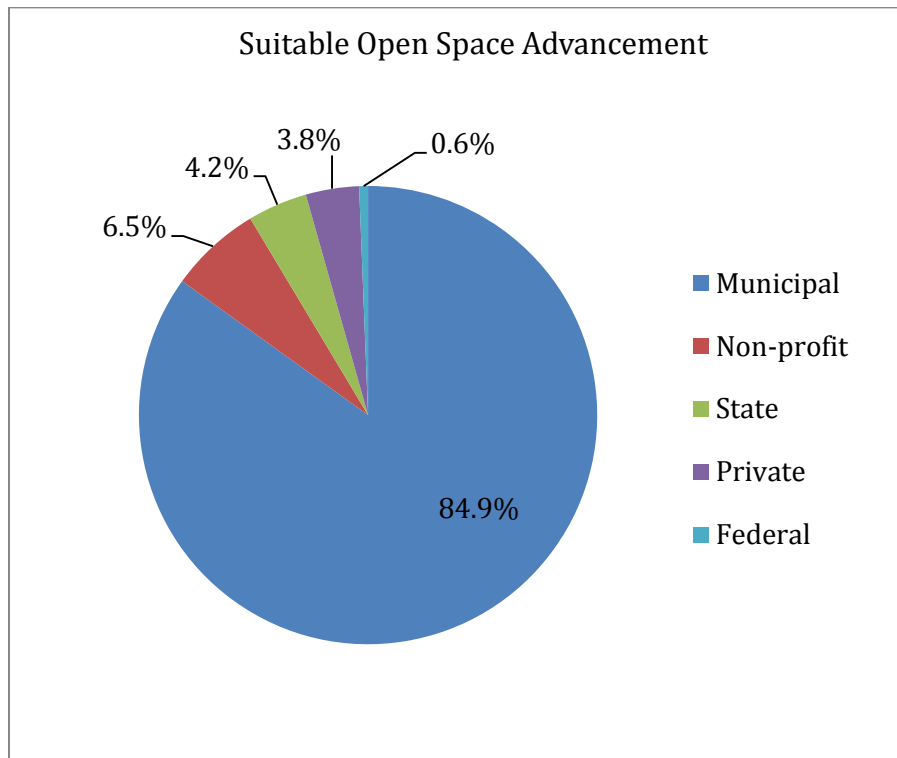


Open Space Marsh Advancement	
OS type	Acres
Yes OS	344.1
No OS	27.6
Non-OS	1,303.2
Total	1,674.9

Suitable Open Space Advancement by Owner

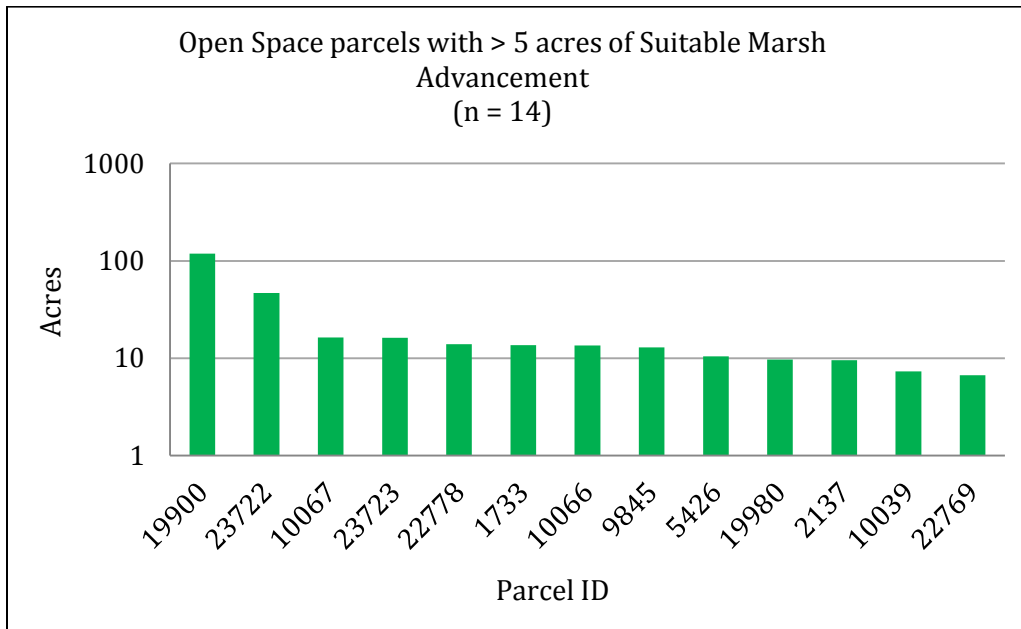
The City of New Haven owns the vast majority of suitable open space for marsh advancement accounting for 292.3 acres (84.9%). Non-profit conservation organizations own the second largest share with 22.3 acres. The State of Connecticut and private owners account for 4.2% and 3.8% of New Haven’s suitable open space, respectively. Finally, the federal government owns the least, with 2.1 acres of suitable open space.

Suitable Open Space Advancement			
Owner type	Acres	Total "yes" OS (%)	Total "yes" adv (%)
Municipal	292.3	84.9	35.6
Non-profit	22.3	6.5	2.7
State	14.5	4.2	1.8
Private	12.9	3.8	1.6
Federal	2.1	0.6	0.3
Total	344.1	100.0	42.0



Suitable Advancement by Open Space Parcel

New Haven has 85 open space parcels that intersect the full extent of marsh advancement by the 2080s. There are 14 open space parcels that each provides more than 5 acres of advancement area with a total aggregate of 302.0 acres (87.6%) of New Haven’s suitable open space marsh advancement area. The parcel with the most suitable marsh advancement zone, West River Memorial Park, contributes significantly more than all other parcels or 34.5% of the total.



Open Space parcels with > 5 acres Suitable Marsh Advancement				
Parcel ID	Acres	Total "yes" OS (%)	Owner	Map Book Page #
19900	118.8	34.5	Municipal	4
23722	46.9	13.6	Municipal	4
10067	16.4	4.8	Municipal	4
23723	16.3	4.7	Municipal	4
22778	14.0	4.1	Municipal	4
1733	13.6	4.0	Municipal	4
10066	13.5	3.9	Municipal	4
9845	12.9	3.7	Municipal	4
5426	10.5	3.0	Non-profit	4
19980	9.7	2.8	Non-profit	4
2137	9.5	2.8	State	4
10039	7.3	2.1	Municipal	4
22769	6.7	1.9	Municipal	4
5403	5.8	1.7	Private	4
Total	302.0	87.6		

Marsh Advancement in All Parcels

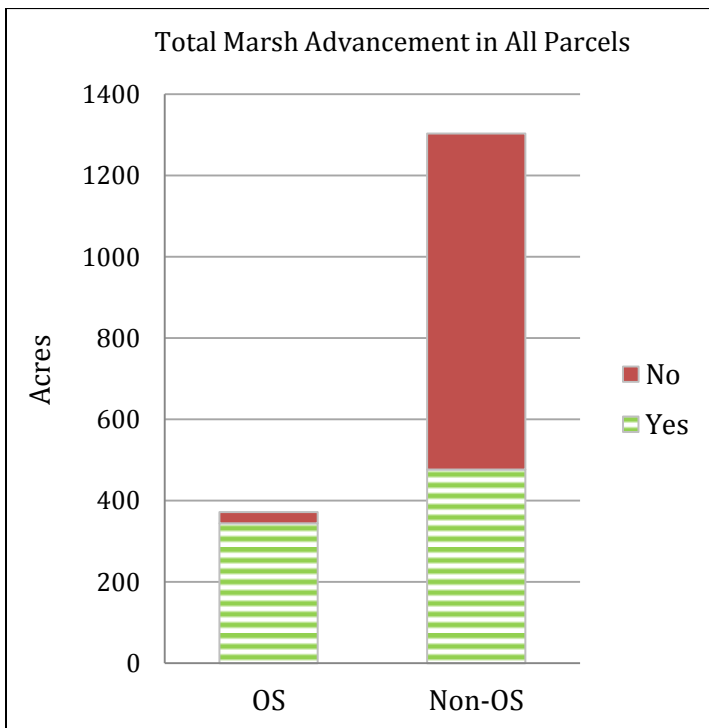
This section incorporates all parcels into the analysis of suitable marsh advancement. These results help put the open space analysis into perspective, as well as identify important unprotected parcels in New Haven’s marsh advancement landscape.

Total Advancement in All Parcels (OS vs. Non-OS)

New Haven’s existing open space parcels are made up of a federal property, a state park, municipal parks and recreation properties, municipal open space, land trust properties, cemeteries, public schools, and unbuildable vacant lots. This section provides an analysis of suitable areas for marsh advancement on these open space parcels versus all other parcels. These two types of parcels are designated as:

- ‘OS’ for open space parcels
- ‘Non-OS’ for all other parcels

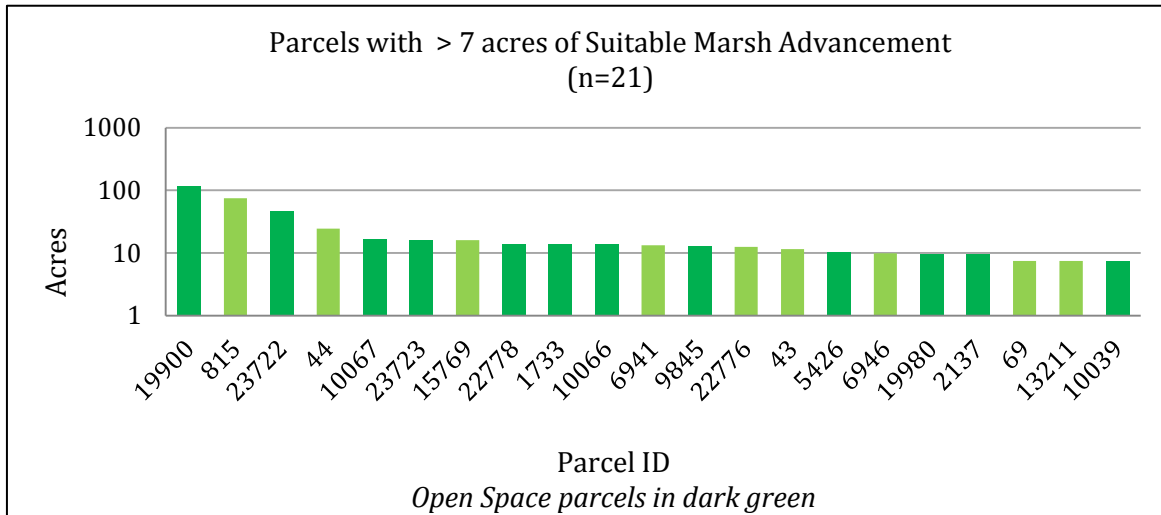
Open space parcels contain 344.1 acres (41.9% of total) of suitable marsh advancement zone. The other 476.5 acres of land suitable for marsh advancement (58.1% of total) are unprotected and generally occur on residential, commercial, or industrial properties. The unprotected suitable areas will receive a greater amount of marsh advancement by 2080s. This information has two important implications for future planning: 1) today’s unprotected properties will play a vital role in maintaining New Haven’s wetland resources in the future, and 2) a large amount of current development (826.6 acres) will be in direct conflict with rising sea levels and advancing marshes.



Total Marsh Advancement			
Parcel type	Yes	No	Total
OS	344.1	27.6	371.7
Non-OS	476.5	826.7	1,303.2
Total	820.6	854.3	1,674.9

Suitable Advancement by All Parcels

There are 1,295 parcels in New Haven that provide areas of suitable marsh advancement, but only 21 parcels offer suitable areas greater than 7 acres. This small subset provides 466.6 acres of marsh advancement zone (56.9%) of New Haven’s overall total. The specific parcels can be viewed via the corresponding Map Book pages (Appendix) indicated in the table below.



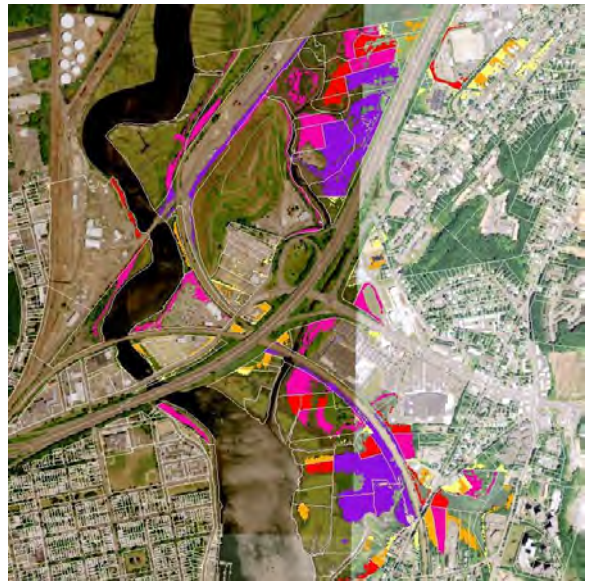
Parcels with > 7 acres of Suitable Marsh Advancement			
Parcel ID	Acres	Total yes adv (%)	Map Book Page #
19900	118.8	14.5	4
815	75.0	9.1	3,4,16,28
23722	46.9	5.7	4
44	24.4	3.0	3,4,16,28
10067	16.4	2.0	4
23723	16.3	2.0	4
15769	16.0	1.9	3,4,12,24
22778	14.0	1.7	4
1733	13.6	1.7	4
10066	13.5	1.6	4
6941	13.3	1.6	3,4,8,20
9845	12.9	1.6	4
22776	12.5	1.5	3,4,9,21
43	11.4	1.4	3,4,16,28
5426	10.5	1.3	4
6946	9.8	1.2	3,4,8,20
19980	9.7	1.2	4
2137	9.5	1.2	4
69	7.4	0.9	3,4,14,26
13211	7.4	0.9	3,4,13,25
10039	7.3	0.9	4
Total	466.7	56.9	

Appendix – Map Book

Please consult your Salt Marsh Advancement Zone Resource Disc for the complete dataset of suitable and unsuitable advancement per parcel.

The Nature Conservancy 
Protecting nature. Preserving life.®

Comprehensive Map Book of New Haven, Connecticut



This page intentionally left blank

-- Table of Contents --

Overview Maps

Marsh Advancement	2
Unprotected Parcels	3
Critical Parcels	4

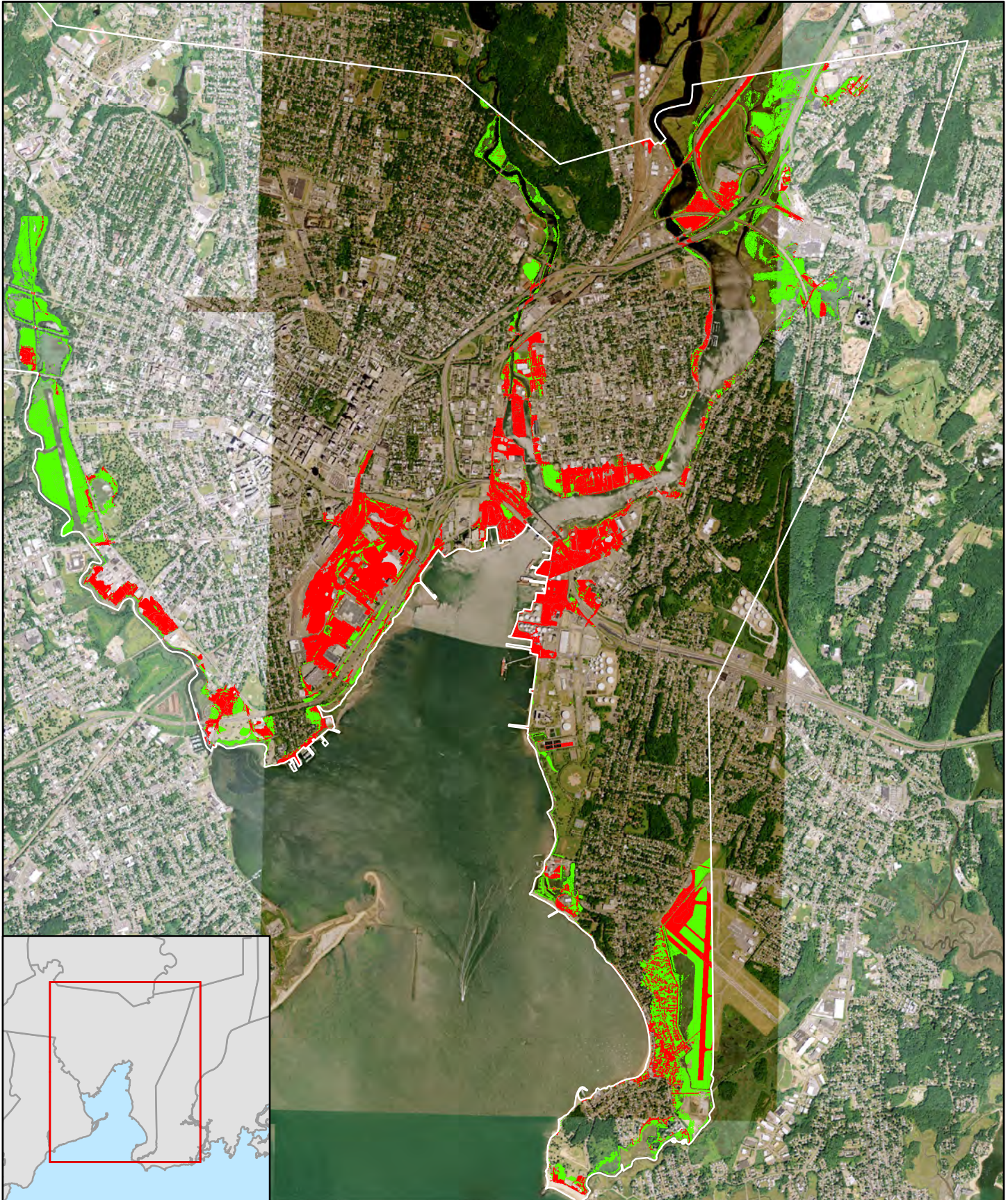
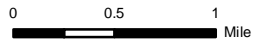
Inset Maps

Unprotected Parcels	7
Advancement per Parcel	21

Marsh Advancement by the 2080s

City of New Haven, CT

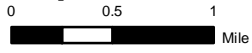
Marsh Advancement Overview



Marsh Advancement by the 2080s

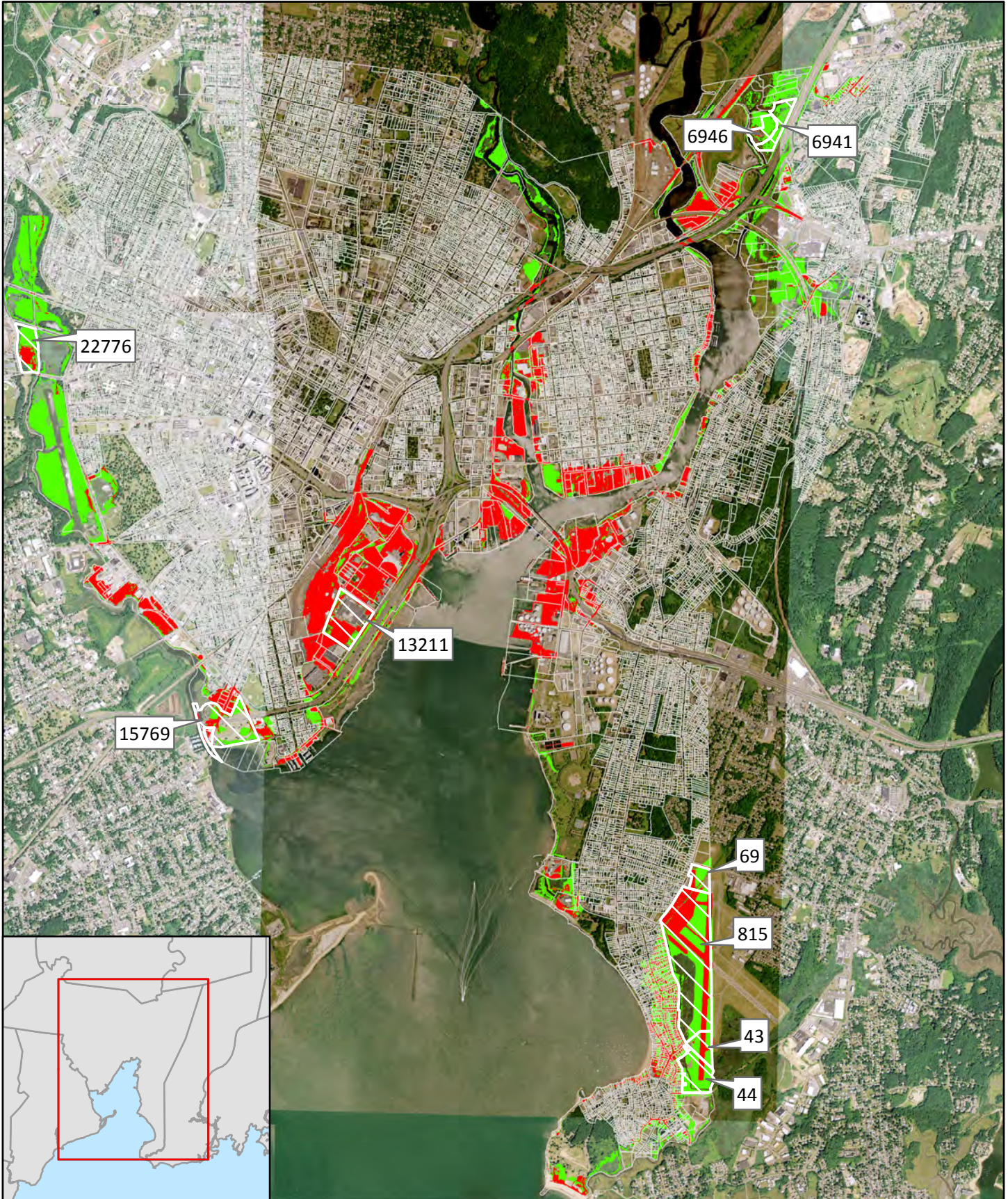
City of New Haven, CT

Unprotected Parcels Overview



Parcels		Marsh Advancement by 2080s	
	Unprotected Non-OS		Developed Land Cover
			Forest, Grass, Ag Land Cover

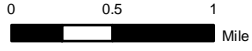
Note: Only Non-OS parcels with > 7 acres of suitable advancement are shown.



Marsh Advancement by the 2080s

City of New Haven, CT

Critical Parcels Overview



Note: Only Non-OS parcels with > 7 acres of suitable advancement and OS parcels with > 5 acres of suitable advancement are shown.

Parcels

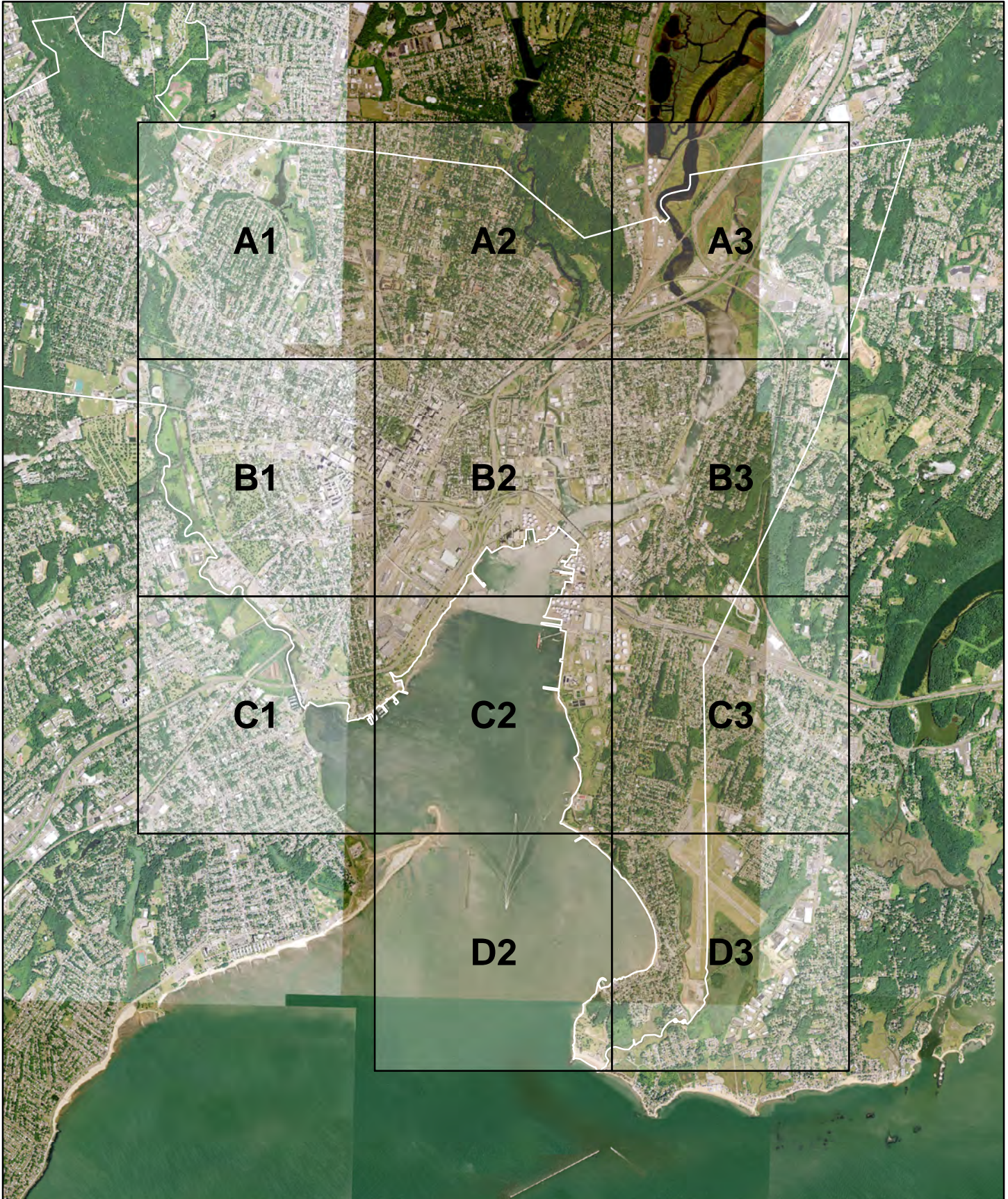
- Unprotected Non-OS
- Protected OS



Marsh Advancement by the 2080s

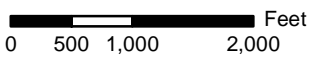
City of New Haven, CT

Map Index - Unprotected Parcels





see page 7

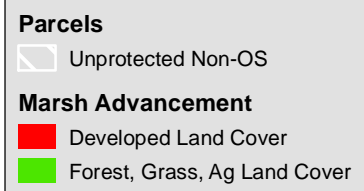


see page 9

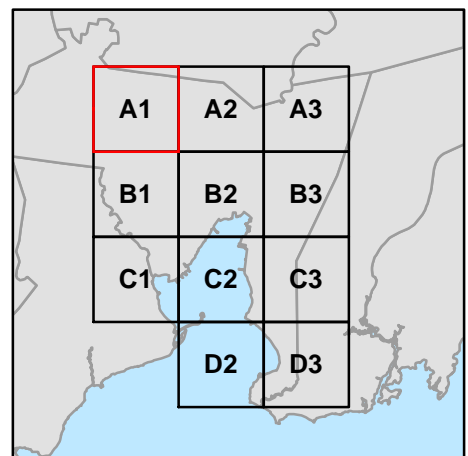
Marsh Advancement by the 2080s

City of New Haven, CT

Unprotected Parcels - Map A1

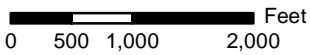
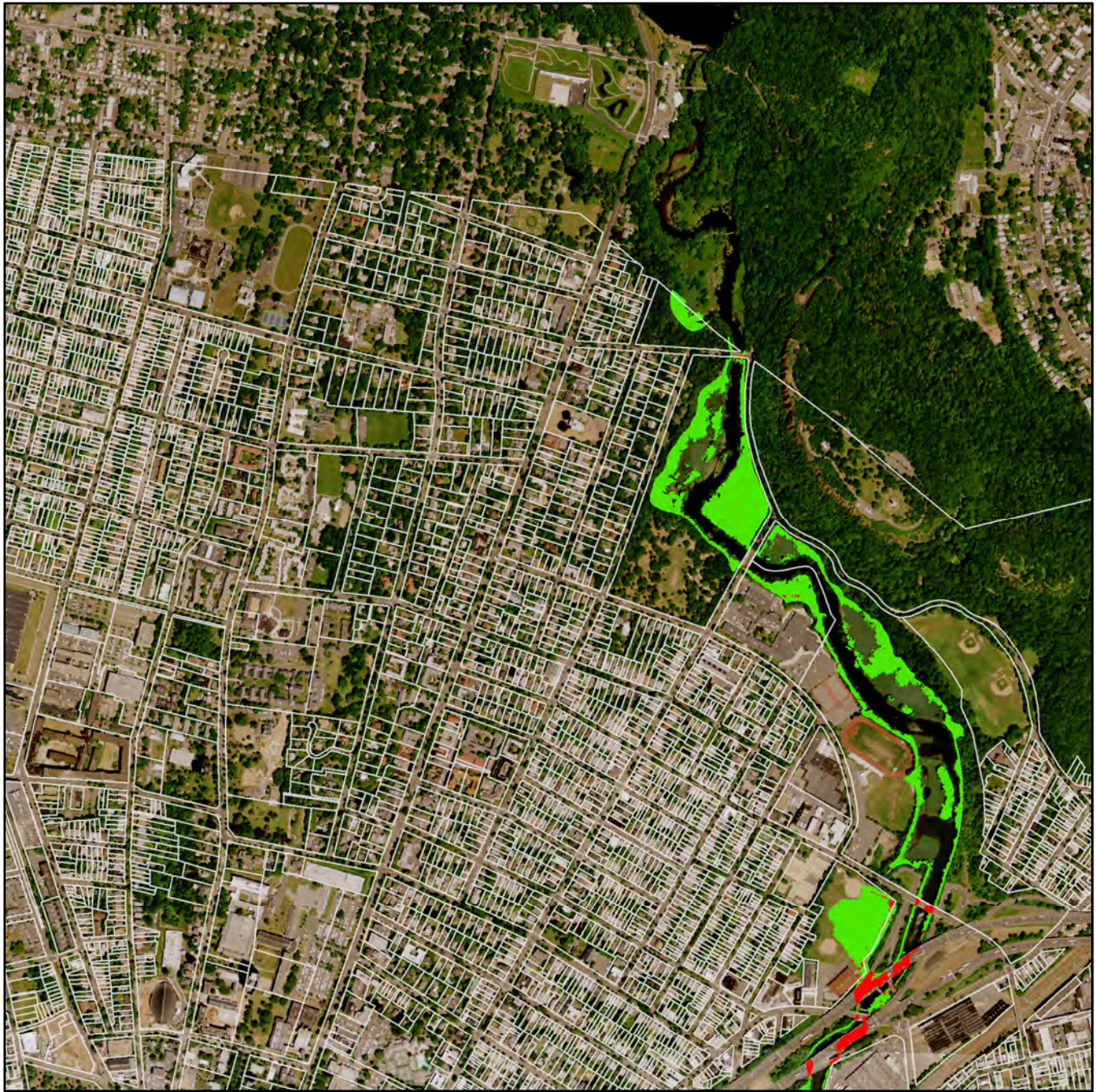


Note: Only Non-OS parcels with > 7 acres of suitable marsh advancement are shown.



see page 6

see page 8



see page 10

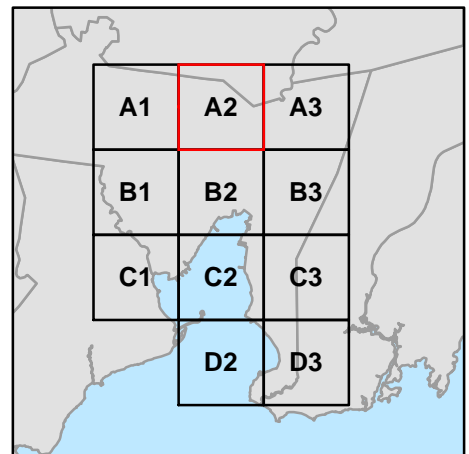
Marsh Advancement by the 2080s

City of New Haven, CT

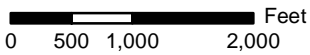
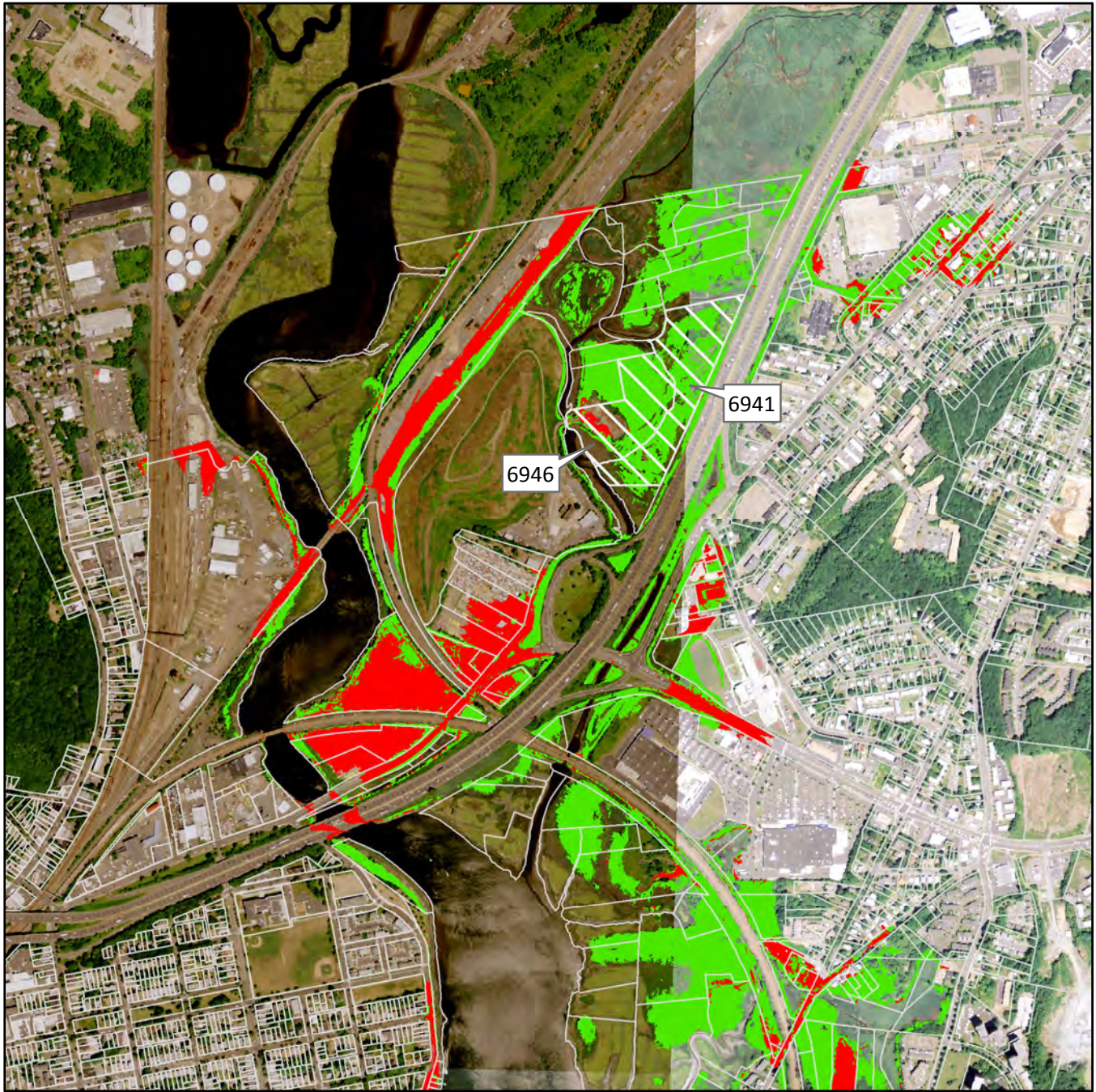
Unprotected Parcels - Map A2



Note: Only Non-OS parcels with > 7 acres of suitable marsh advancement are shown.



see page 7



see page 11

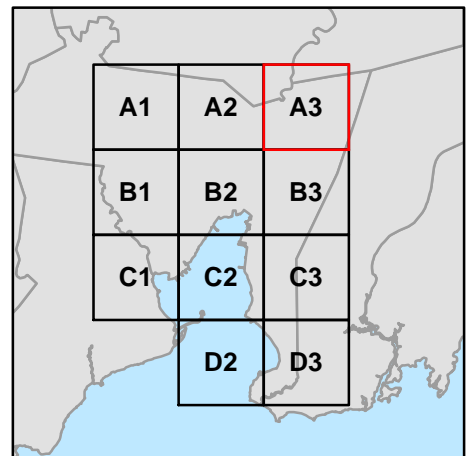
Marsh Advancement by the 2080s

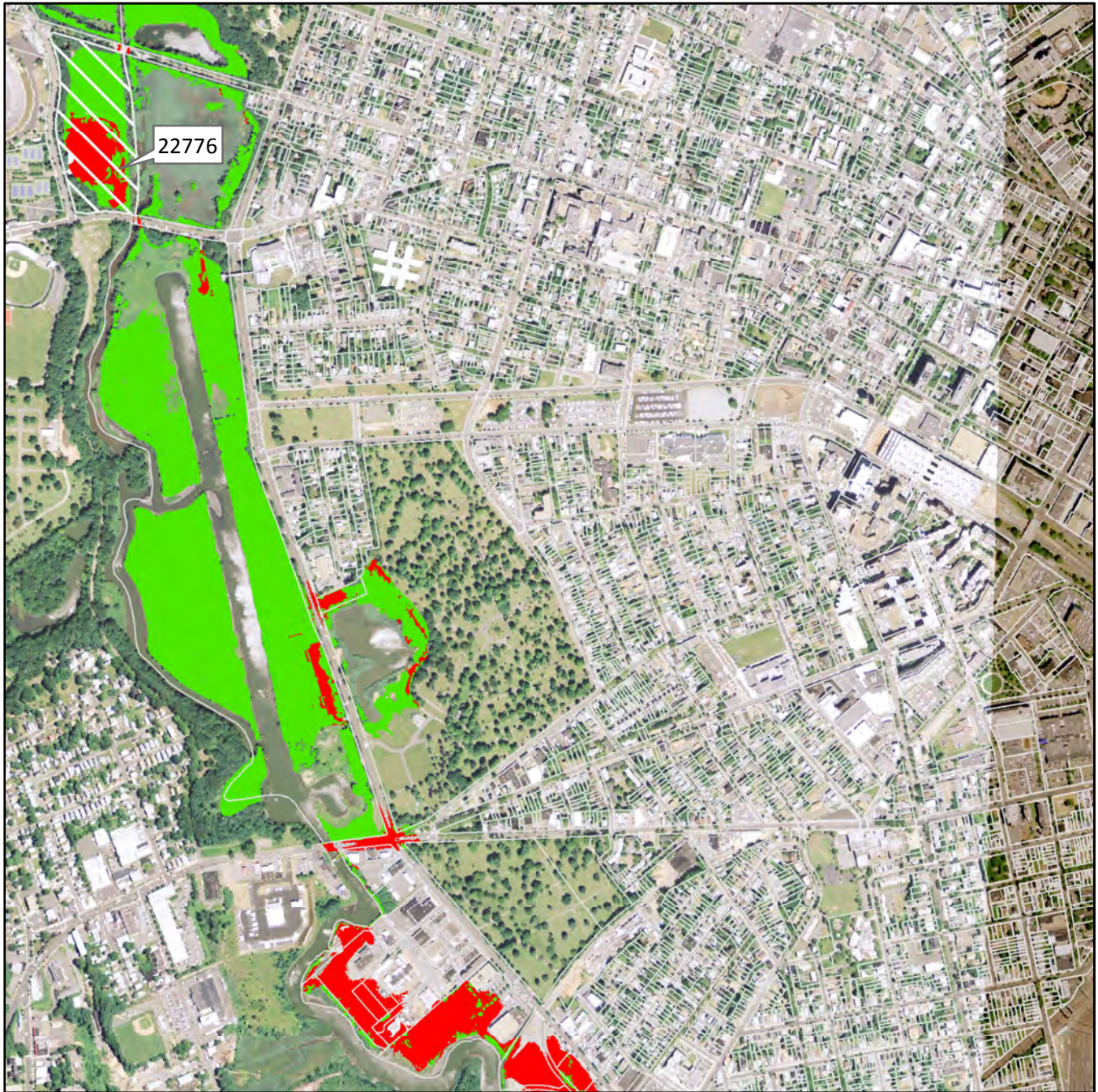
City of New Haven, CT

Unprotected Parcels - Map A3

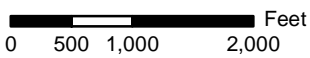


Note: Only Non-OS parcels with > 7 acres of suitable marsh advancement are shown.





see page 10

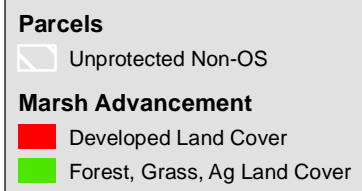


see page 12

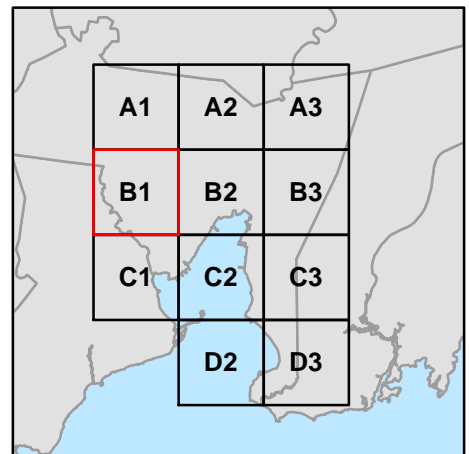
Marsh Advancement by the 2080s

City of New Haven, CT

Unprotected Parcels - Map B1

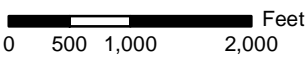


Note: Only Non-OS parcels with > 7 acres of suitable marsh advancement are shown.



see page 9

see page 11

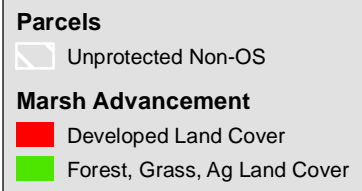


see page 13

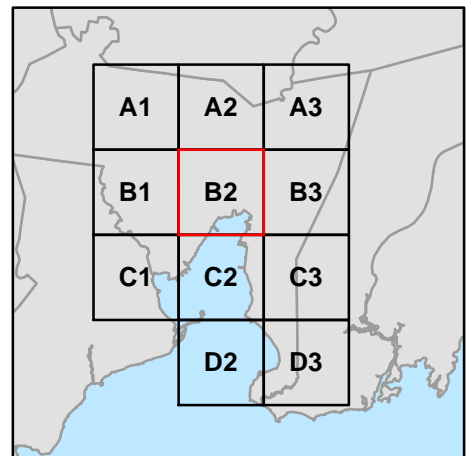
Marsh Advancement by the 2080s

City of New Haven, CT

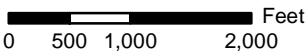
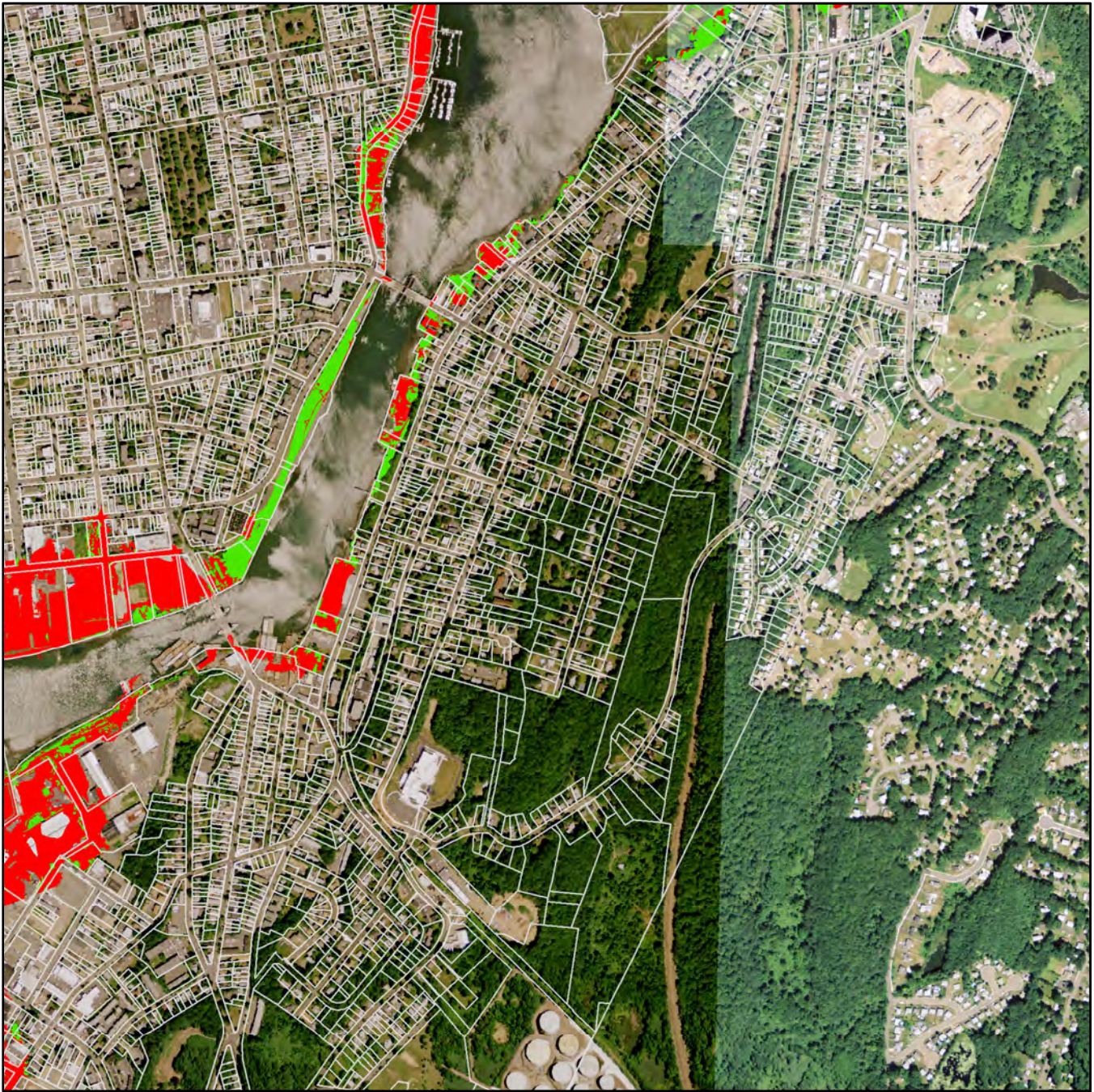
Unprotected Parcels - Map B2



Note: Only Non-OS parcels with > 7 acres of suitable marsh advancement are shown.



see page 10

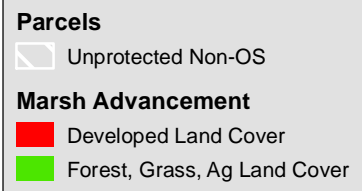


see page 14

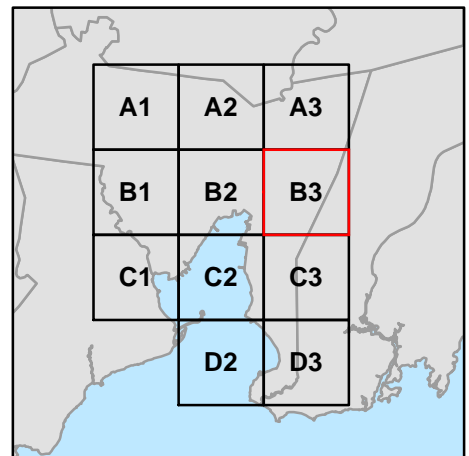
Marsh Advancement by the 2080s

City of New Haven, CT

Unprotected Parcels - Map B3

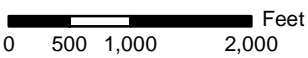


Note: Only Non-OS parcels with > 7 acres of suitable marsh advancement are shown.





see page 13



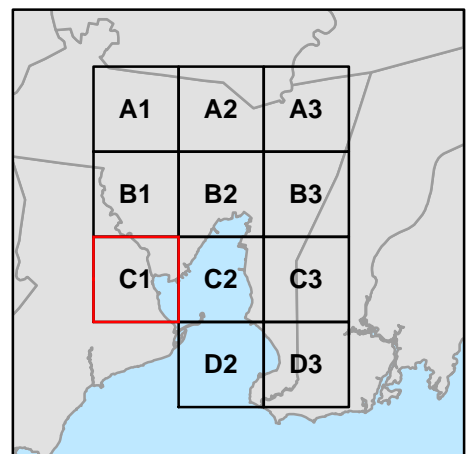
Marsh Advancement by the 2080s

City of New Haven, CT

Unprotected Parcels - Map C1



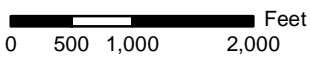
Note: Only Non-OS parcels with > 7 acres of suitable marsh advancement are shown.



see page 12



see page 14



see page 15

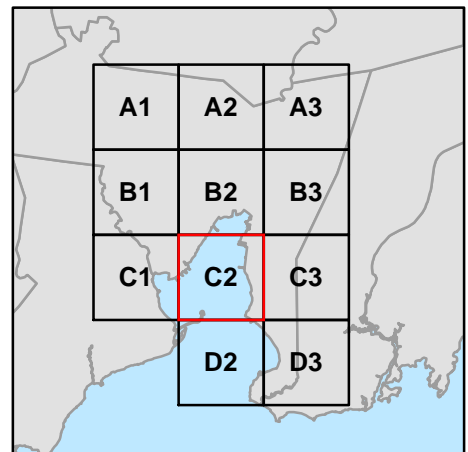
Marsh Advancement by the 2080s

City of New Haven, CT

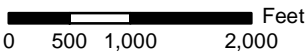
Unprotected Parcels - Map C2



Note: Only Non-OS parcels with > 7 acres of suitable marsh advancement are shown.



see page 13

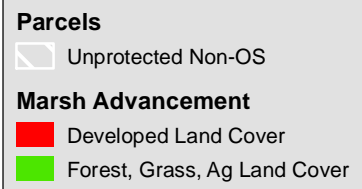


see page 16

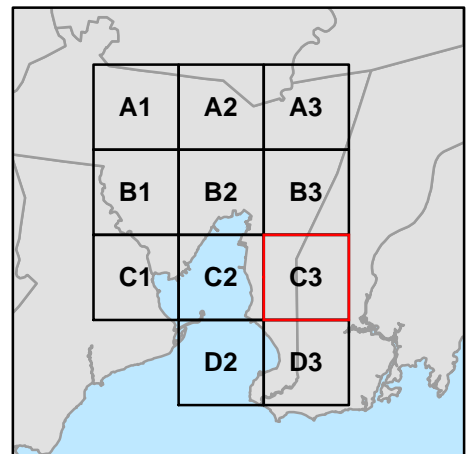
Marsh Advancement by the 2080s

City of New Haven, CT

Unprotected Parcels - Map C3

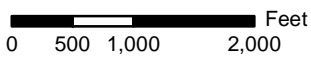


Note: Only Non-OS parcels with > 7 acres of suitable marsh advancement are shown.





see page 16



Marsh Advancement by the 2080s

City of New Haven, CT

Unprotected Parcels - Map D2

Parcels

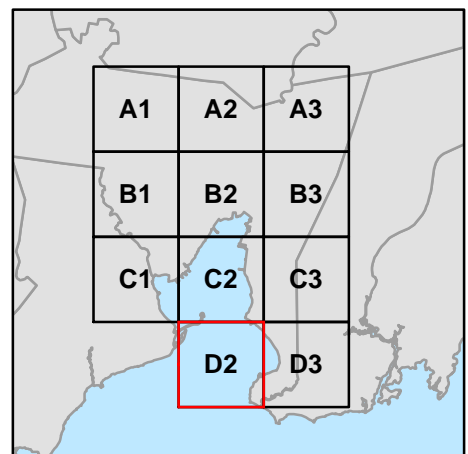
- Unprotected Non-OS

Marsh Advancement

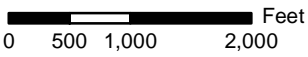
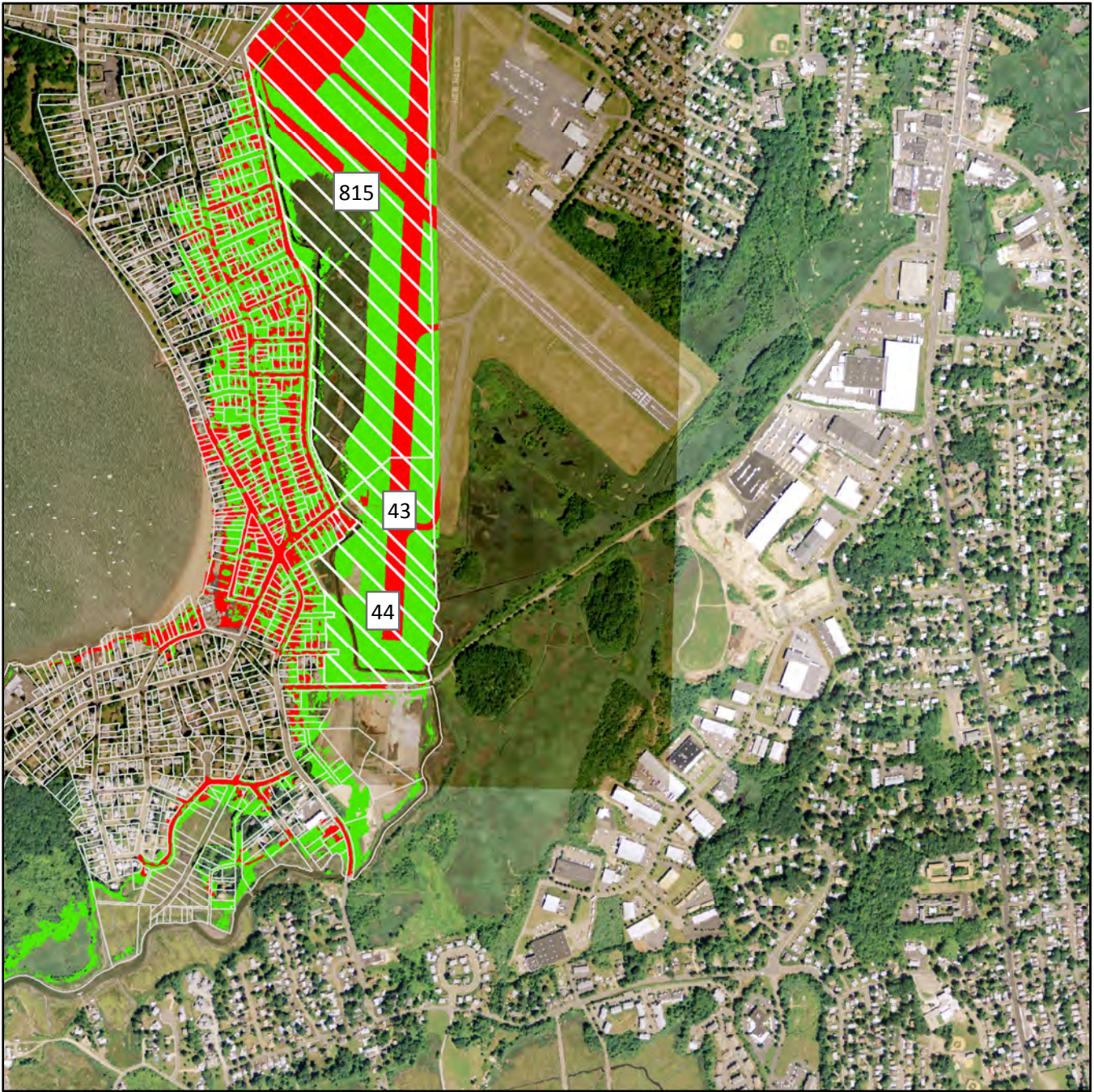
- Developed Land Cover
- Forest, Grass, Ag Land Cover



Note: Only Non-OS parcels with > 7 acres of suitable marsh advancement are shown.



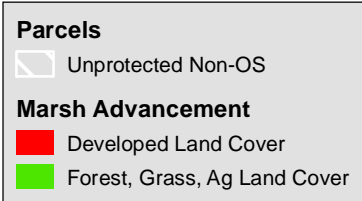
see page 15



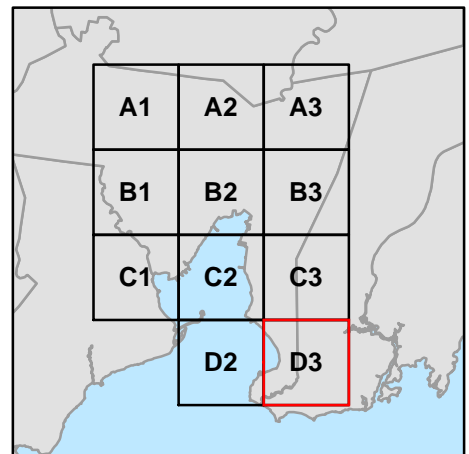
Marsh Advancement by the 2080s

City of New Haven, CT

Unprotected Parcels - Map D3



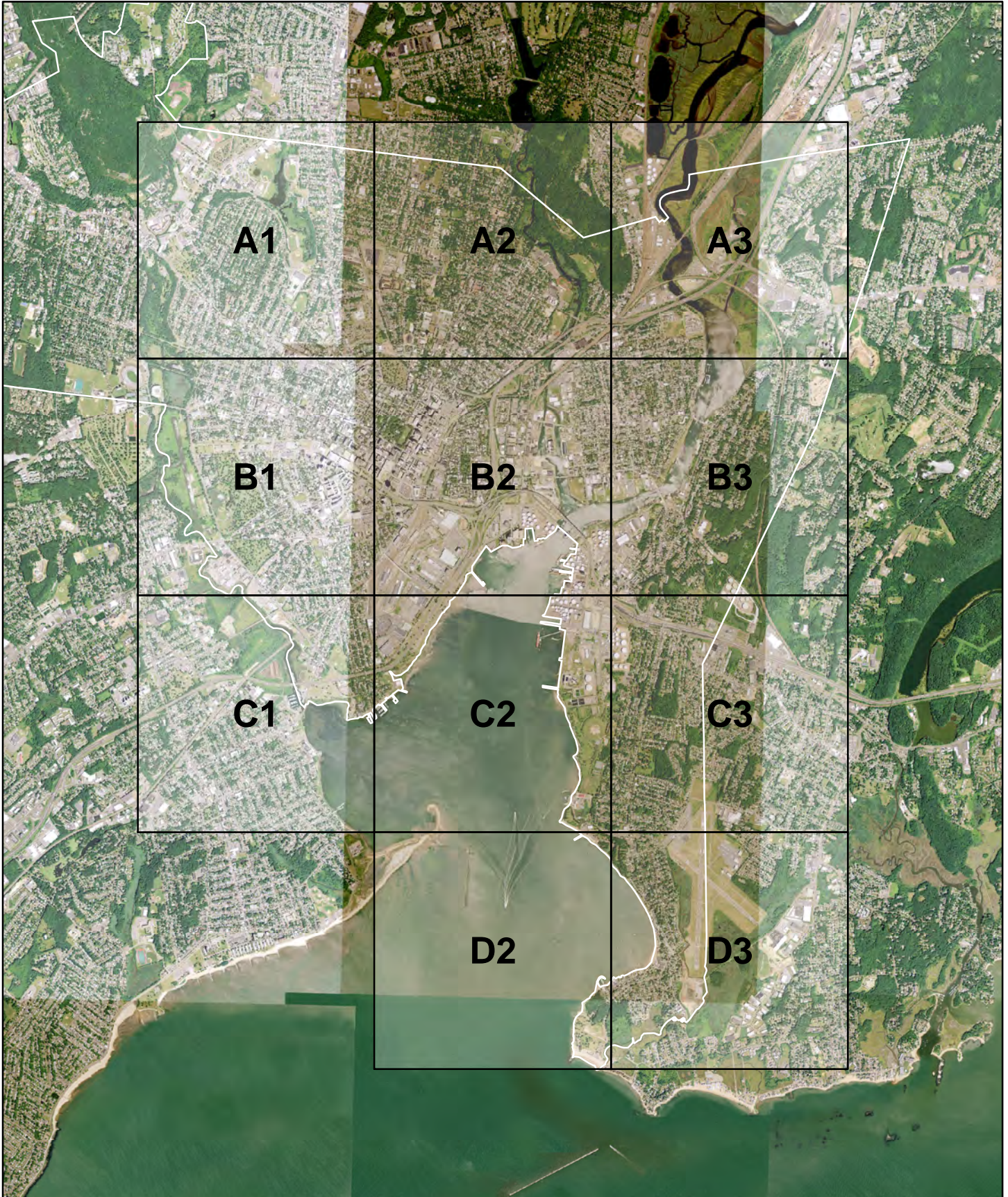
Note: Only Non-OS parcels with > 7 acres of suitable marsh advancement are shown.

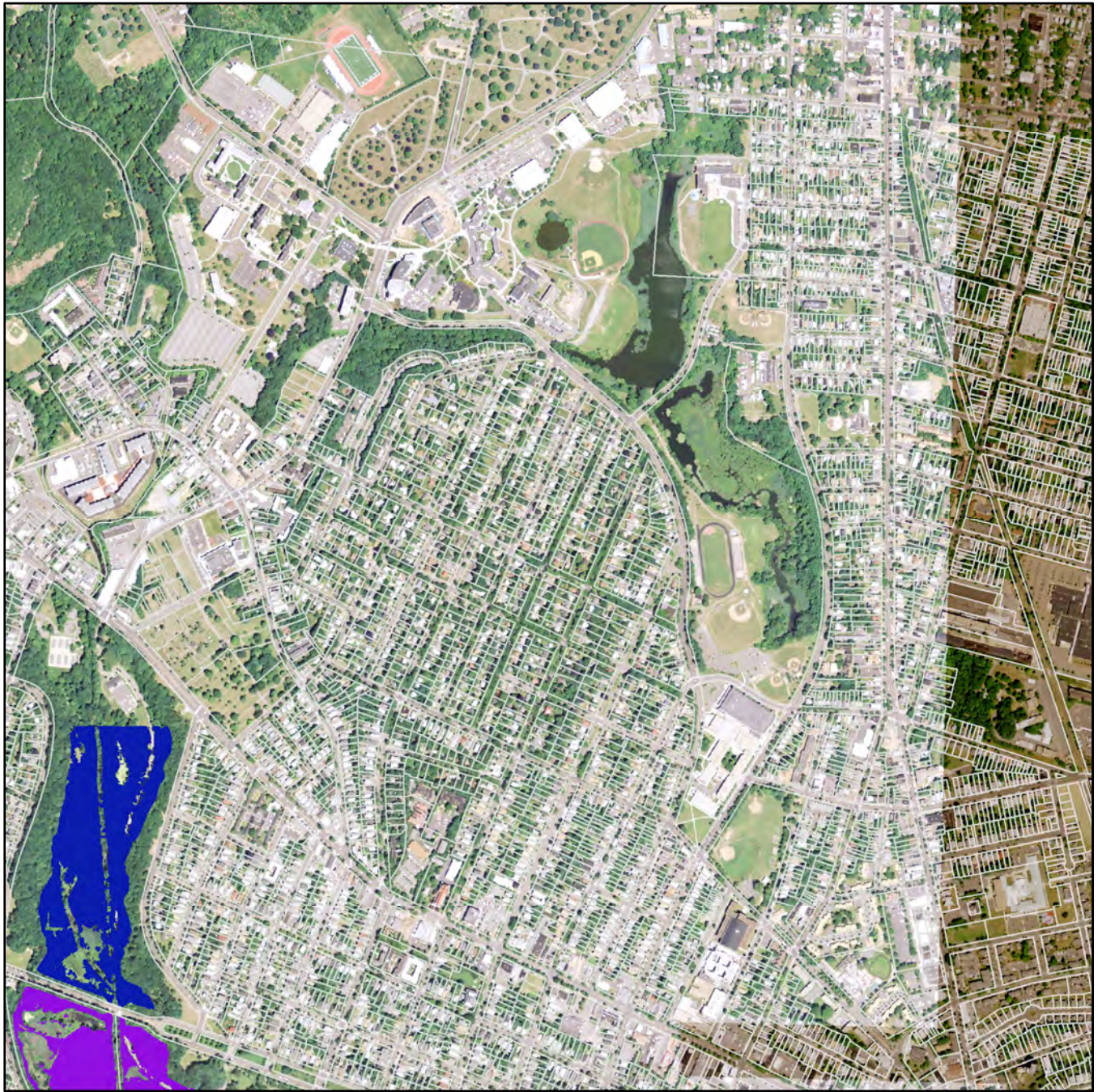


Marsh Advancement by the 2080s

City of New Haven, CT

Map Index - Advancement per Parcel





0 500 1,000 2,000 Feet

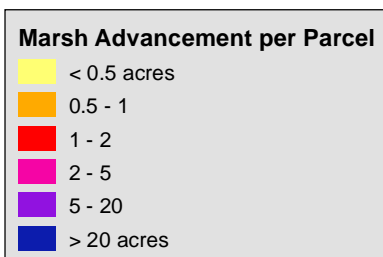
see page 21

see page 19

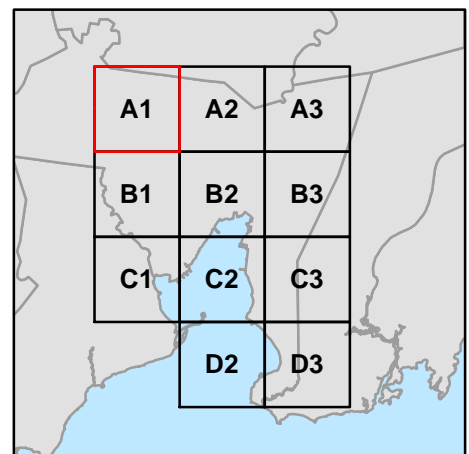
Marsh Advancement by the 2080s

City of New Haven, CT

Advancement per Parcel - Map A1

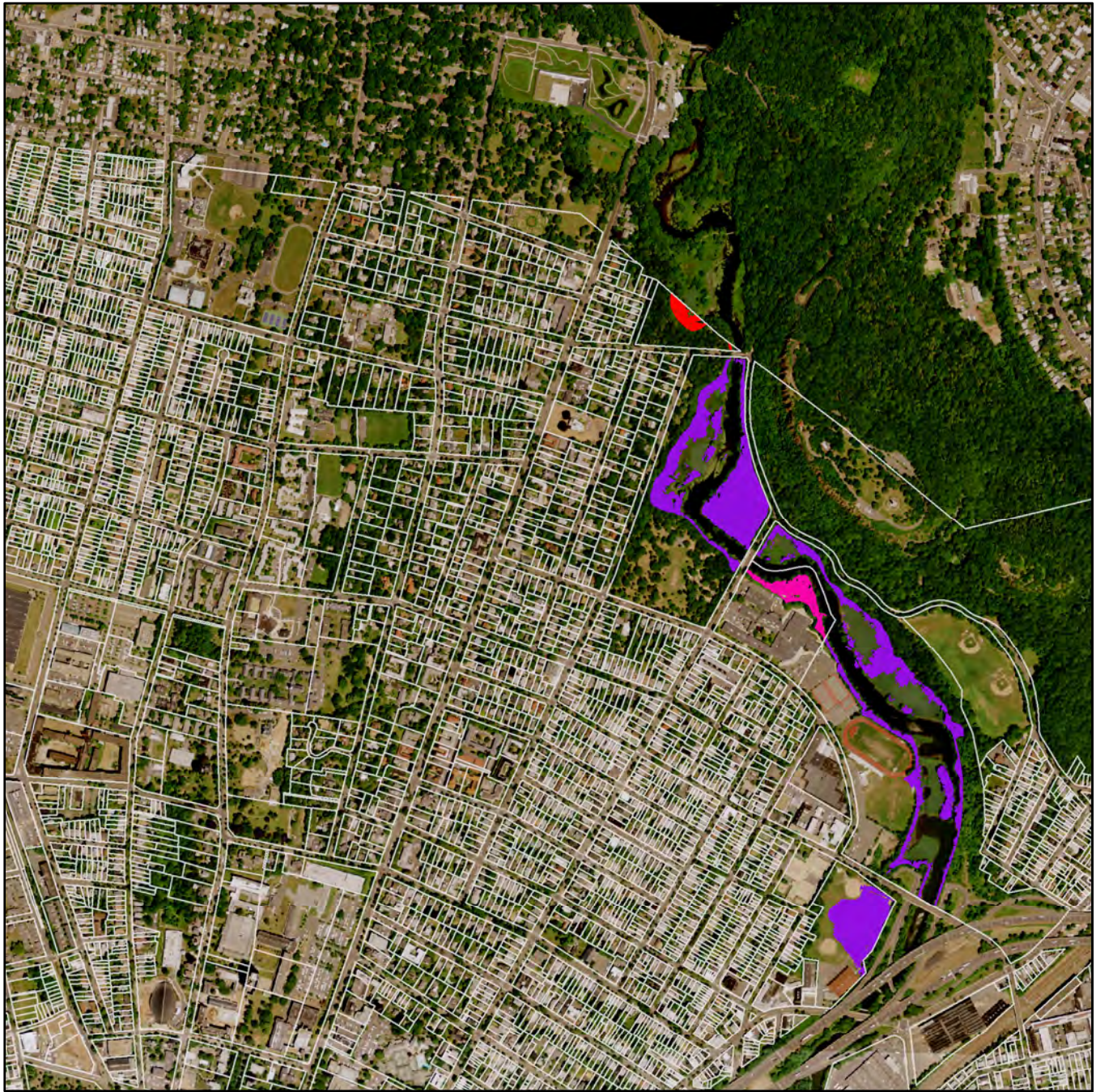


Note: Only Non-OS parcels with > 7 acres of suitable marsh advancement are shown.



see page 18

see page 20



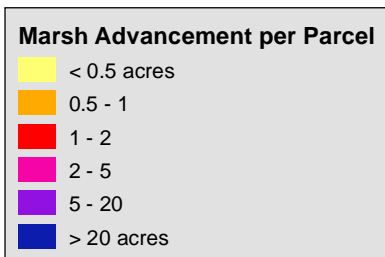
0 500 1,000 2,000 Feet

see page 22

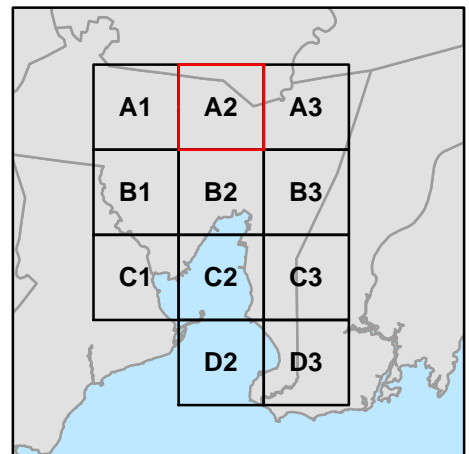
Marsh Advancement by the 2080s

City of New Haven, CT

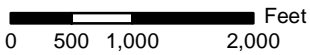
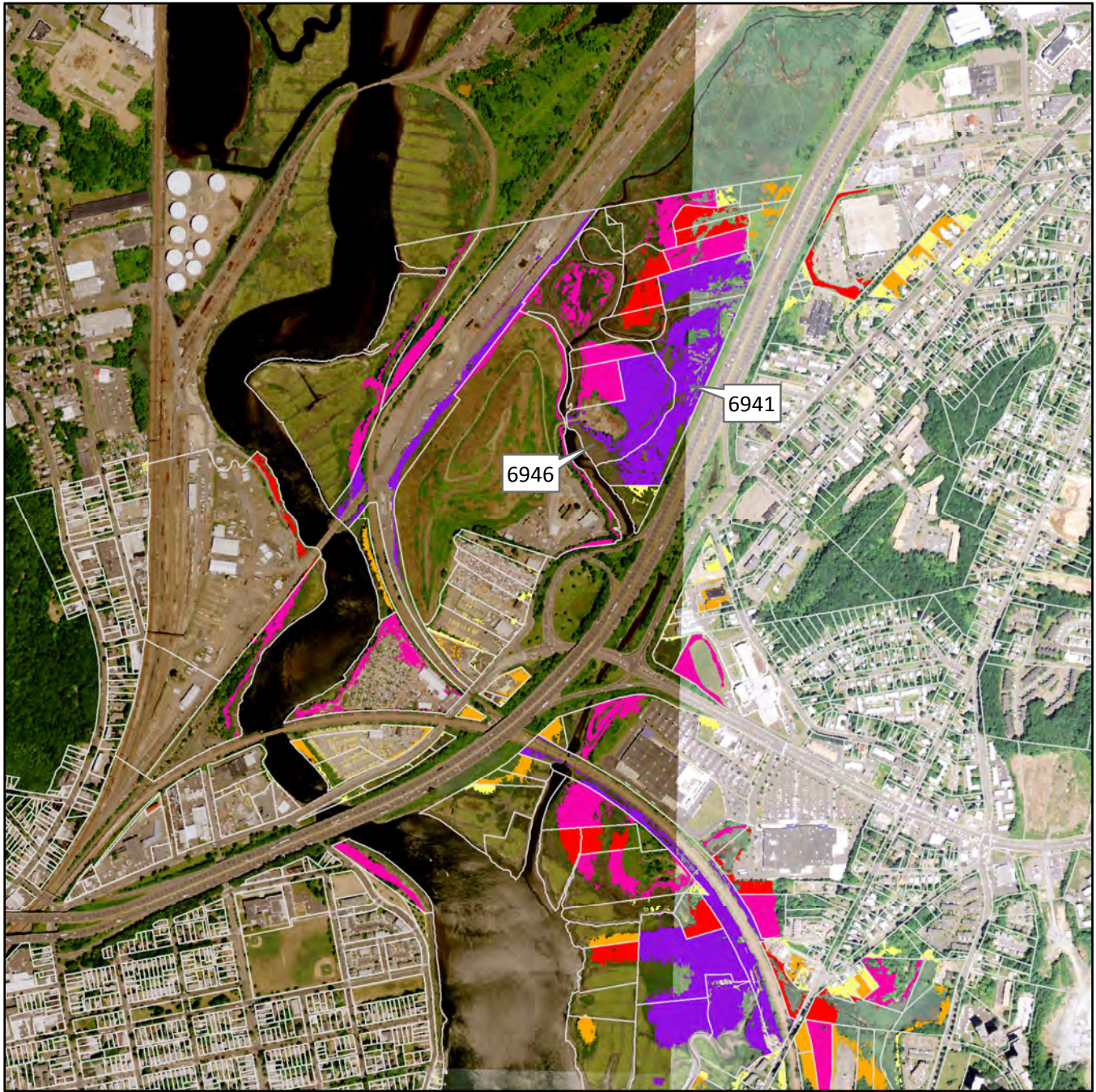
Advancement per Parcel - Map A2



Note: Only Non-OS parcels with > 7 acres of suitable marsh advancement are shown.



see page 19

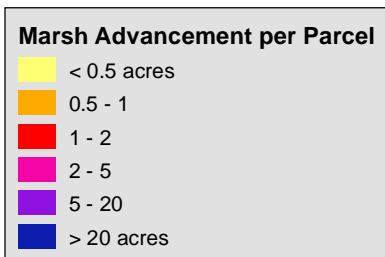


see page 23

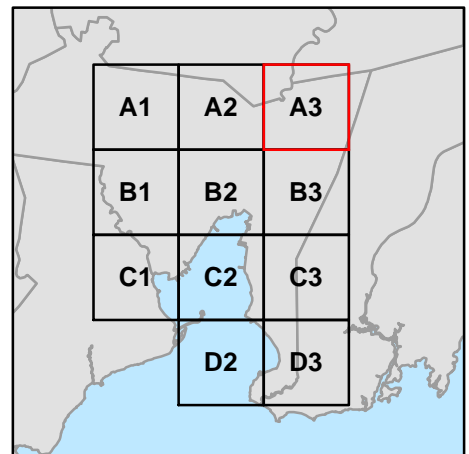
Marsh Advancement by the 2080s

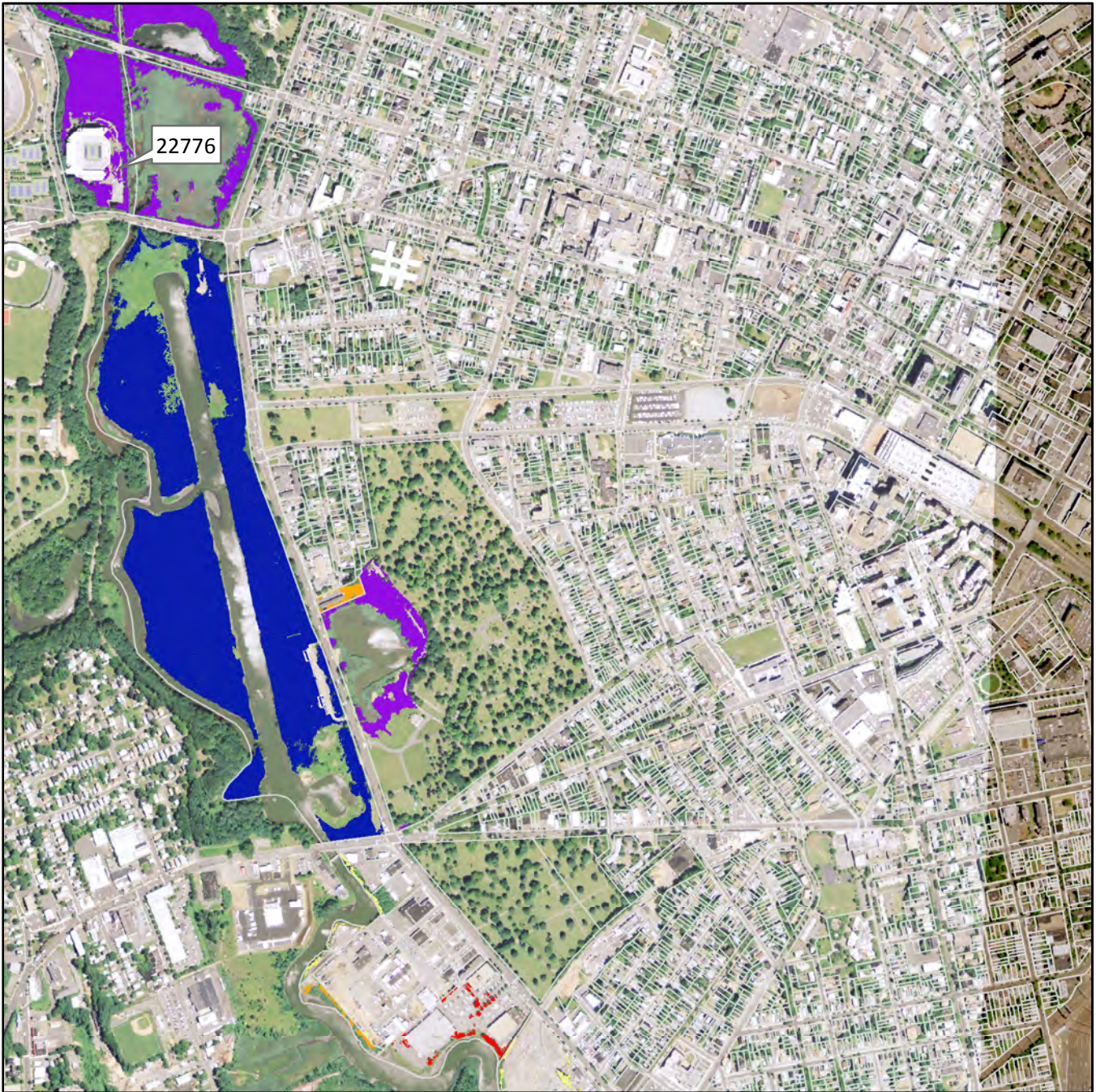
City of New Haven, CT

Advancement per Parcel - Map A3

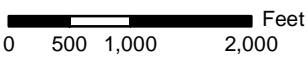


Note: Only Non-OS parcels with > 7 acres of suitable marsh advancement are shown.





see page 22

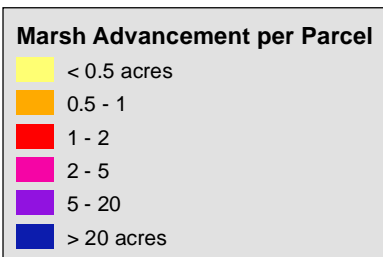


see page 24

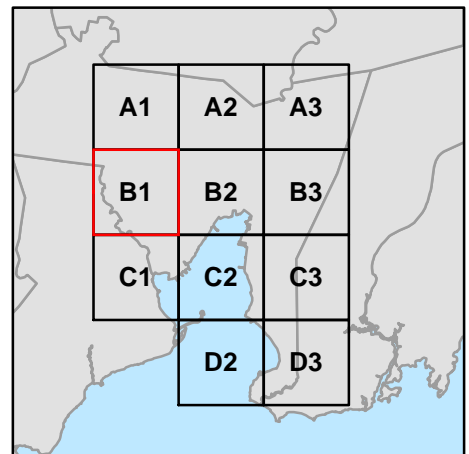
Marsh Advancement by the 2080s

City of New Haven, CT

Advancement per Parcel - Map B1

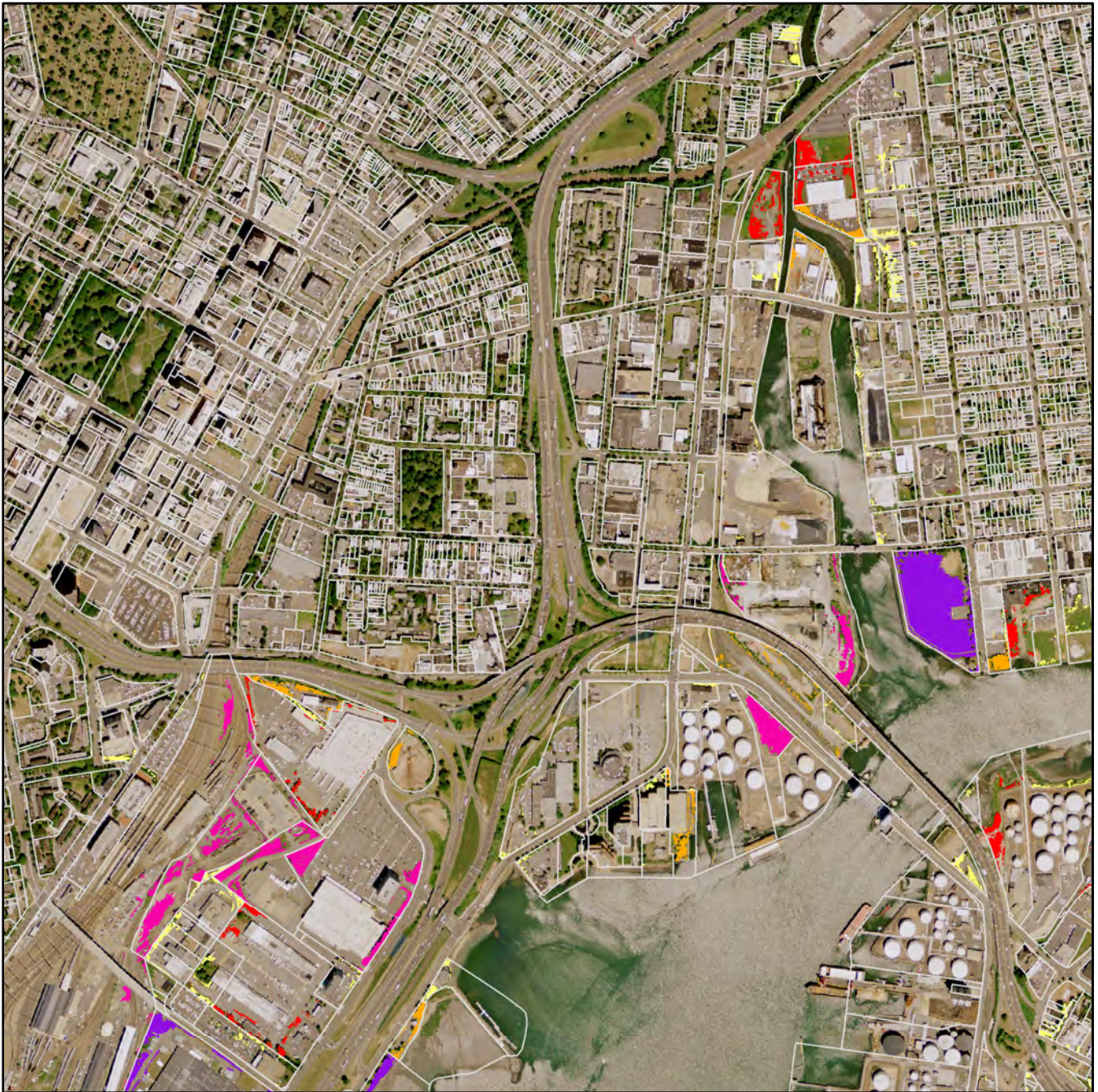


Note: Only Non-OS parcels with > 7 acres of suitable marsh advancement are shown.



see page 21

see page 23



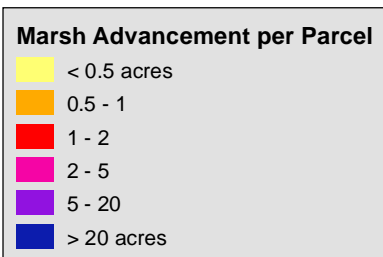
0 500 1,000 2,000 Feet

see page 25

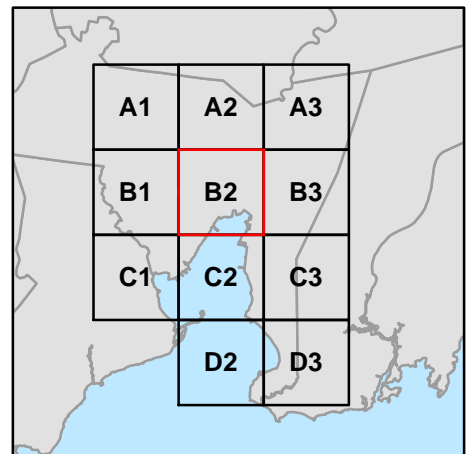
Marsh Advancement by the 2080s

City of New Haven, CT

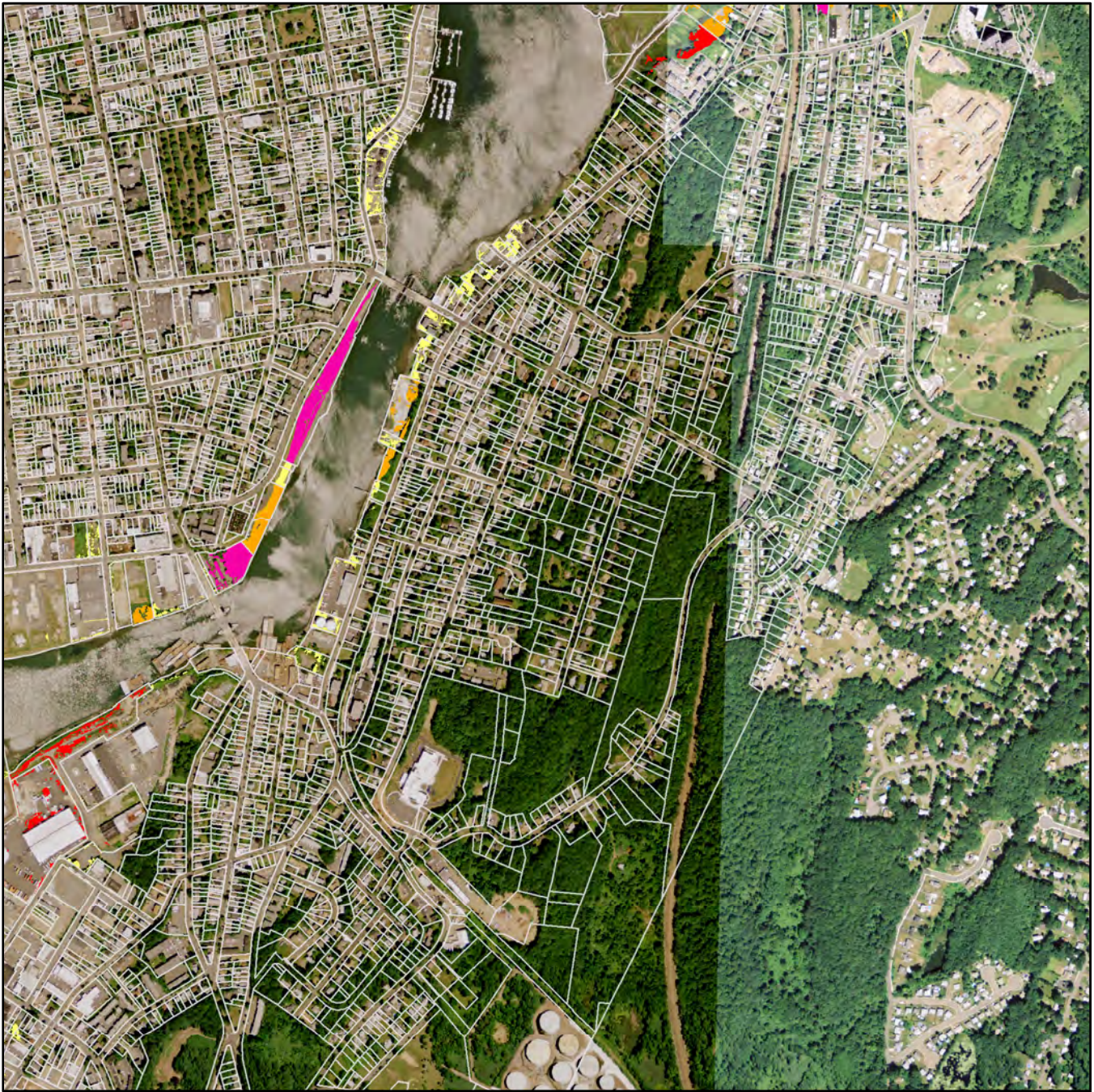
Advancement per Parcel - Map B2



Note: Only Non-OS parcels with > 7 acres of suitable marsh advancement are shown.



see page 22



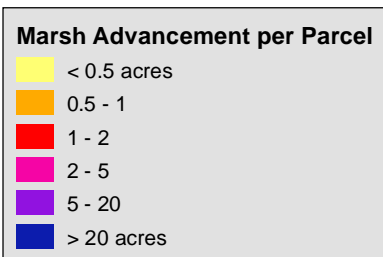
0 500 1,000 2,000 Feet

see page 26

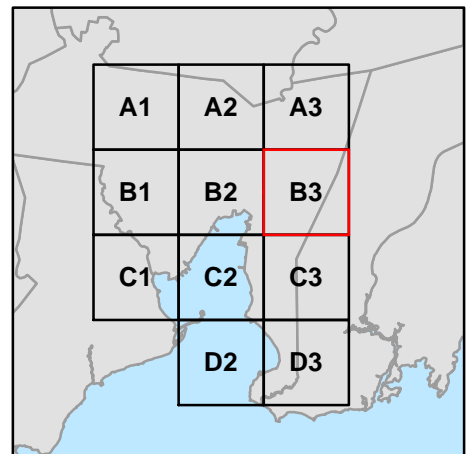
Marsh Advancement by the 2080s

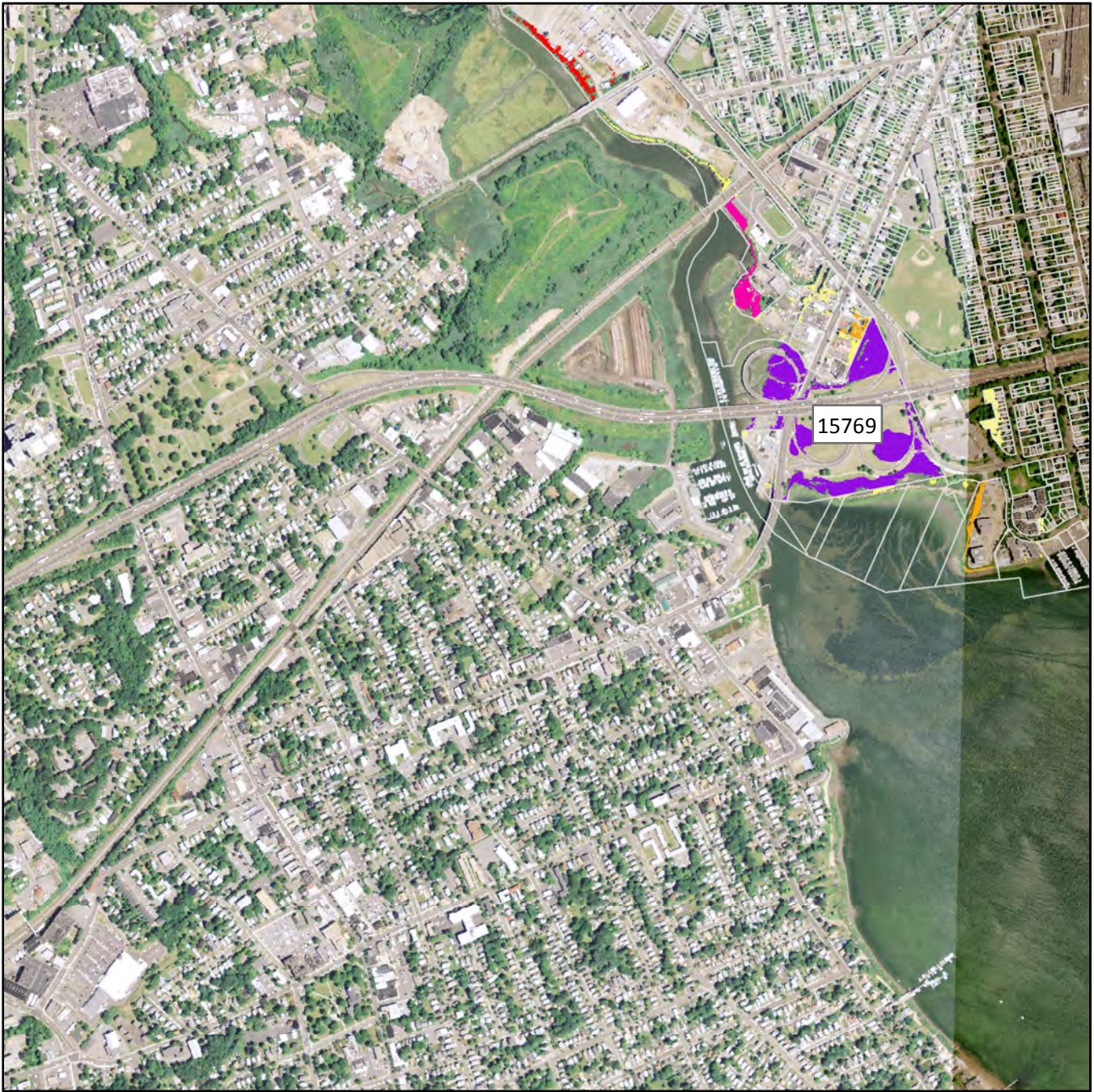
City of New Haven, CT

Advancement per Parcel - Map B3



Note: Only Non-OS parcels with > 7 acres of suitable marsh advancement are shown.





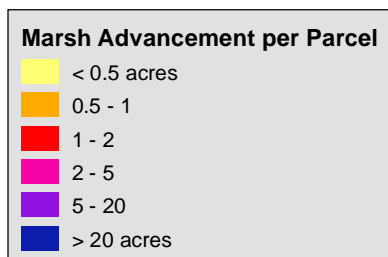
see page 25

0 500 1,000 2,000 Feet

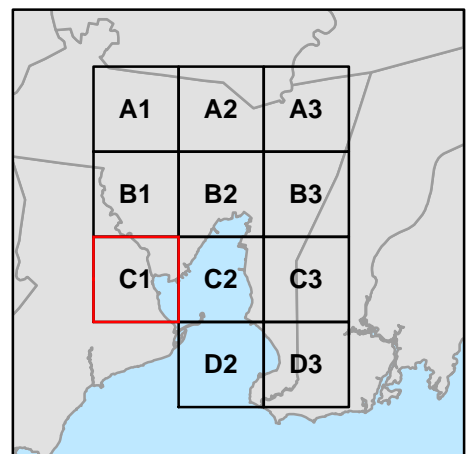
Marsh Advancement by the 2080s

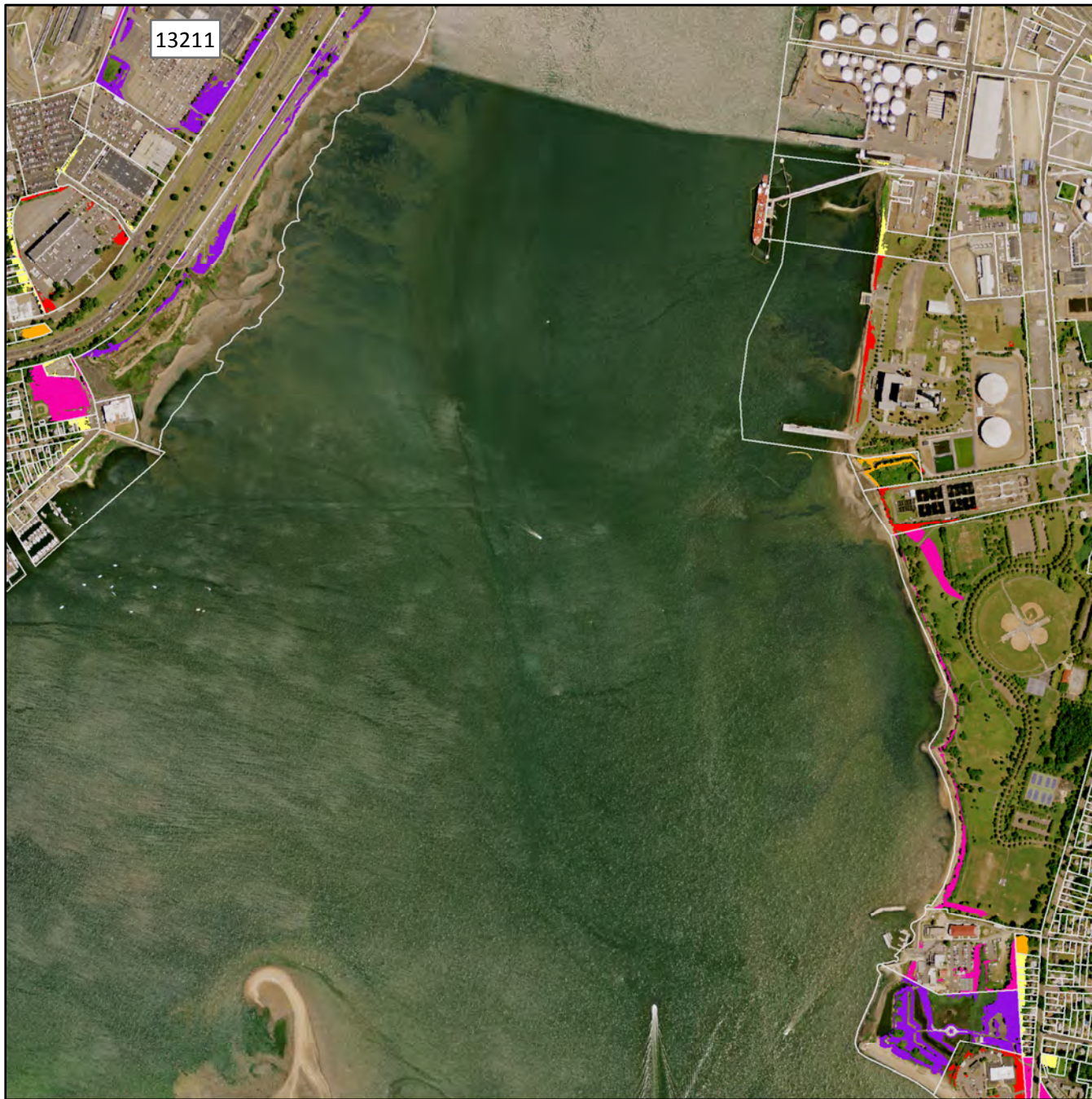
City of New Haven, CT

Advancement per Parcel - Map C1



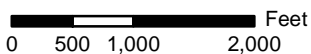
Note: Only Non-OS parcels with > 7 acres of suitable marsh advancement are shown.





see page 24

see page 26

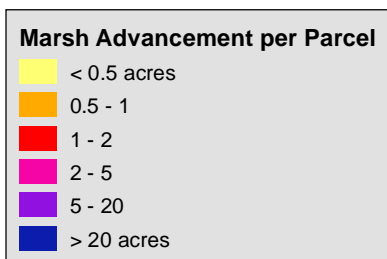


see page 27

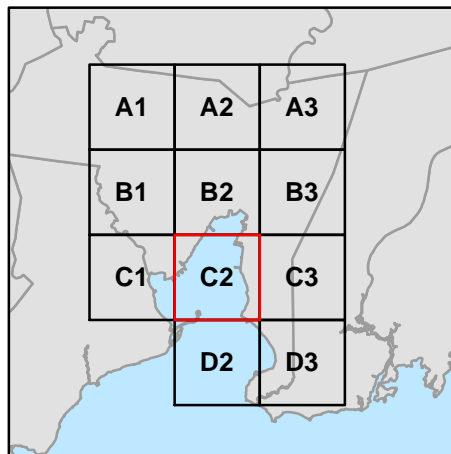
Marsh Advancement by the 2080s

City of New Haven, CT

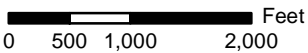
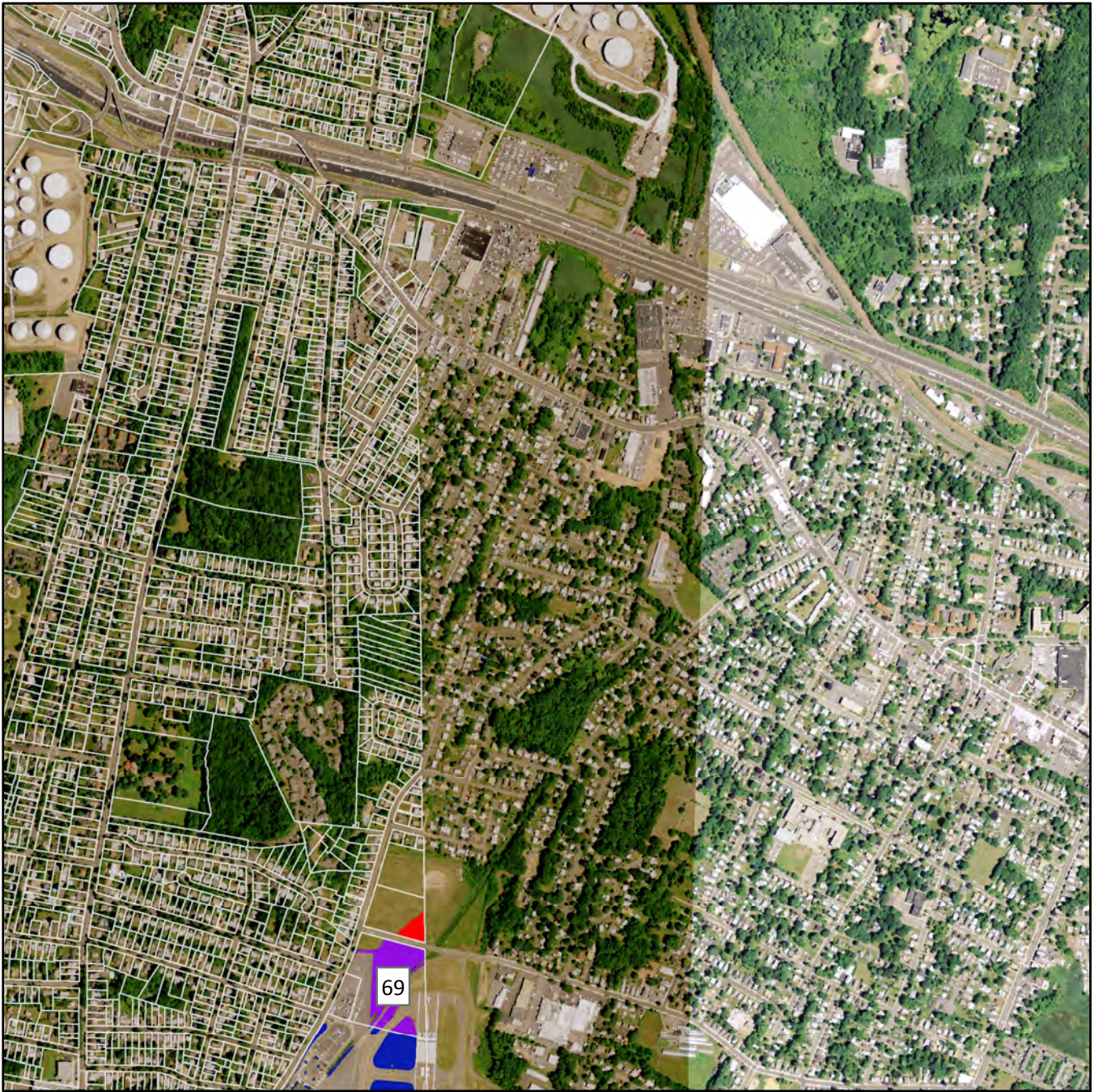
Advancement per Parcel - Map C2



Note: Only Non-OS parcels with > 7 acres of suitable marsh advancement are shown.



see page 25

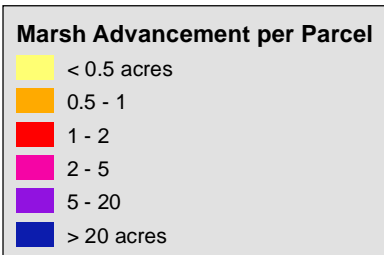


see page 28

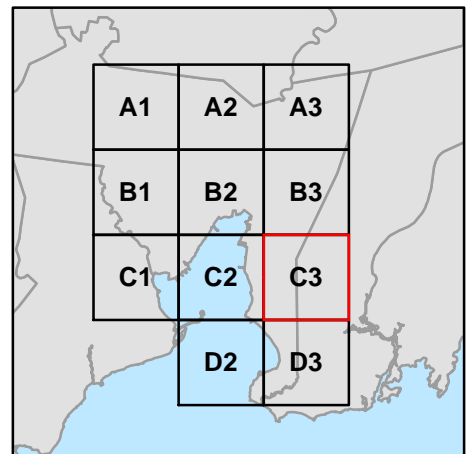
Marsh Advancement by the 2080s

City of New Haven, CT

Advancement per Parcel - Map C3



Note: Only Non-OS parcels with > 7 acres of suitable marsh advancement are shown.





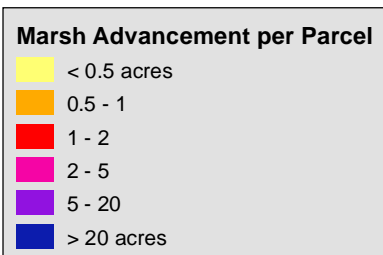
see page 28

0 500 1,000 2,000 Feet

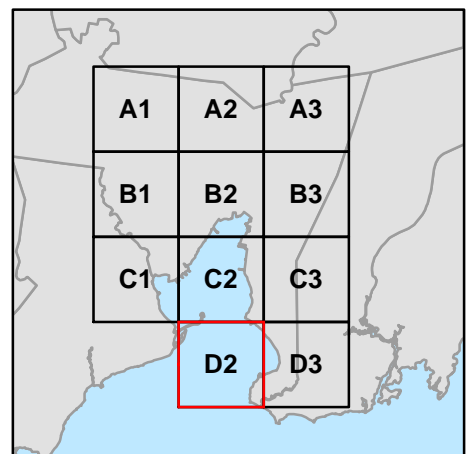
Marsh Advancement by the 2080s

City of New Haven, CT

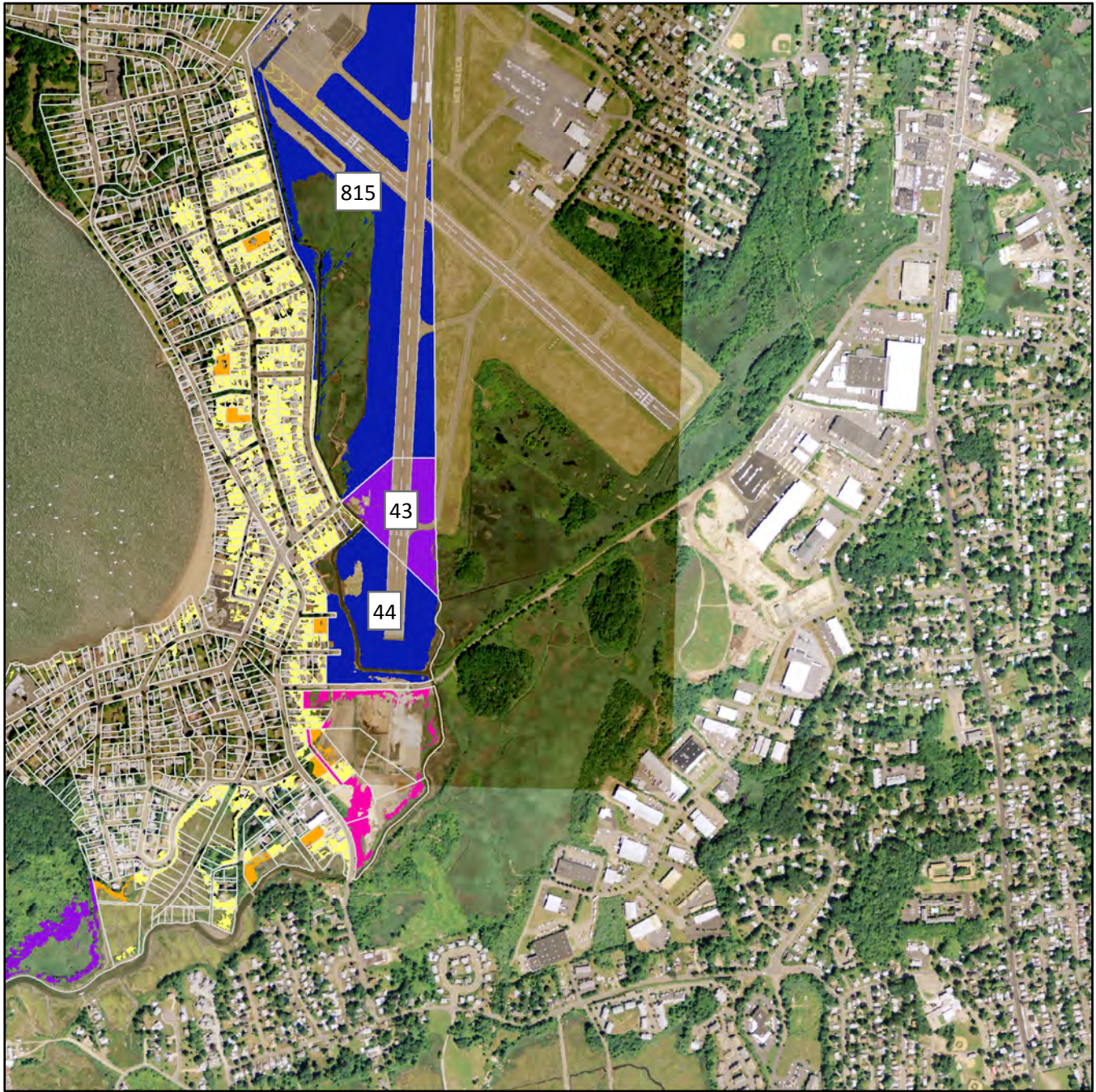
Advancement per Parcel - Map D2



Note: Only Non-OS parcels with > 7 acres of suitable marsh advancement are shown.



see page 27

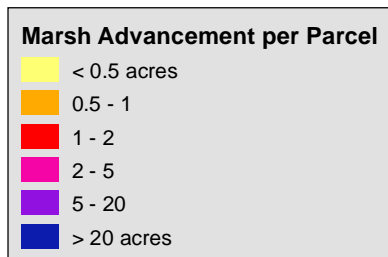


0 500 1,000 2,000 Feet

Marsh Advancement by the 2080s

City of New Haven, CT

Advancement per Parcel - Map D3



Note: Only Non-OS parcels with > 7 acres of suitable marsh advancement are shown.

