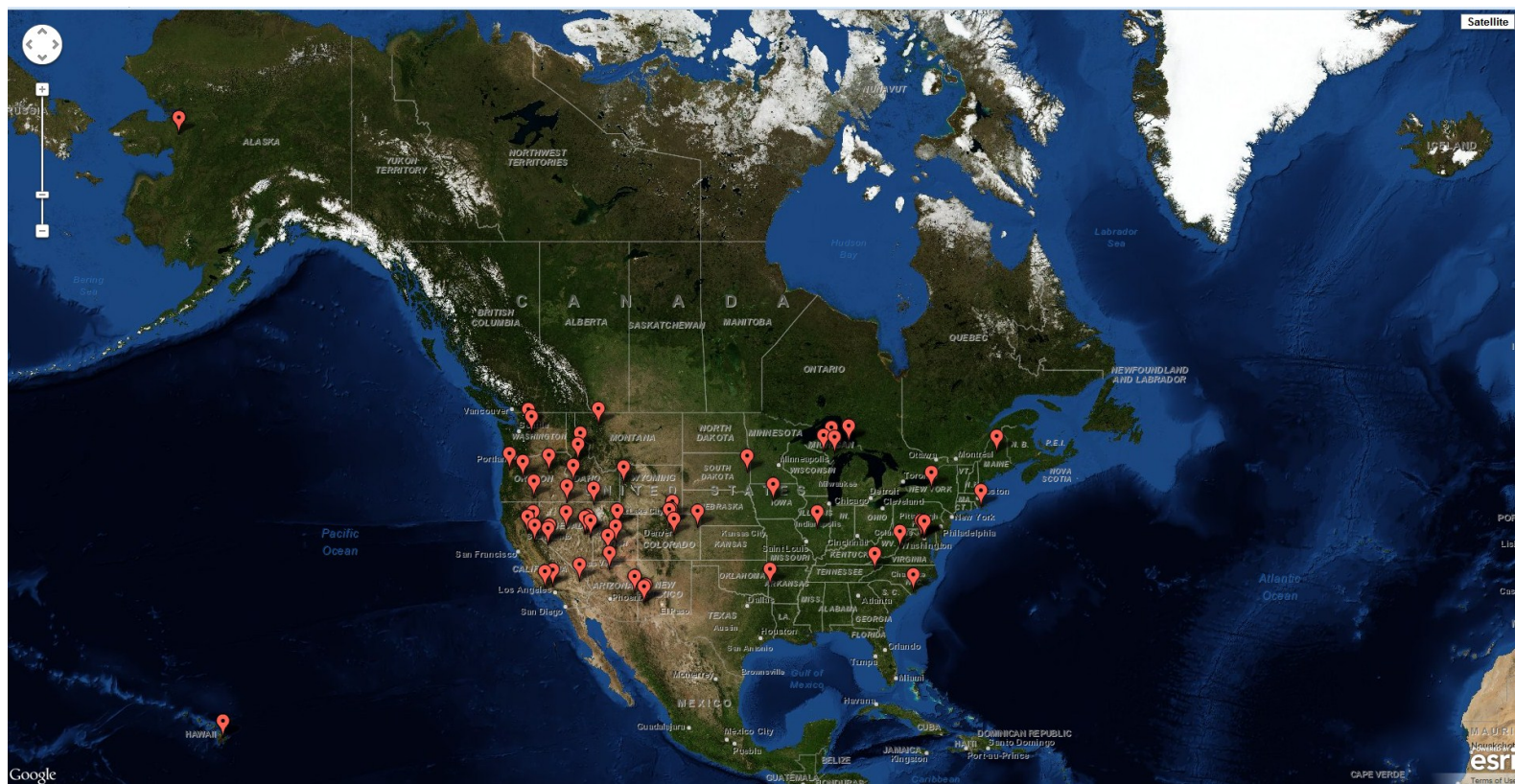


# WHAM!

## Web-Hosted Applications Map: Stories from LANDFIRE

Supporting wildland fire management and analysis was the primary design criterion for LANDFIRE Program products. The richness of the product suite, its consistent nature, and its continuous national coverage create a myriad of potential uses in non-fire application areas as well. We tracked a few on-the-ground stories demonstrating the versatility of LANDFIRE's product suite.

The *LANDFIRE Web-Hosted Applications Map WHAM!* is an online, interactive map that calls up many of the applications, their locations, and the partners we work with. It's easy as point-and-click! Hover over a "balloon," click on it, and learn how LANDFIRE products helped land managers meet their planning objectives.



**Get it:**

Scan the quick response code here or go to:

[maps.tnc.org/landfire](https://maps.tnc.org/landfire).

**Update it:**

If you know of an application that should be added to the map, please contact us at [landfire@tnc.org](mailto:landfire@tnc.org).



The Nature Conservancy's LANDFIRE team helps real people apply LANDFIRE products to solve real world problems.

LANDFIRE National—[www.landfire.gov](http://www.landfire.gov) TNC-LANDFIRE—[www.conservationgateway.org/topic/landfire](http://www.conservationgateway.org/topic/landfire) e-mail— [landfire@tnc.org](mailto:landfire@tnc.org)

# LANDFIRE Users Identified on the WHAM!

Bureau of Land Management (BLM)

BLM—Bishop Field Office

BLM—Ely District

Cherokee National Forest

Colorado State Forest Service

Dixie-Fishlake National Forest

Fremont Ranger District

Great Basin National Park

Hiawatha National Forest

Lakeview Stewardship Group

NatureServe

Northern Sierra Partnership

Payette National Forest

Powell Ranger District

Silver City Ranger District

The Nature Conservancy—Arkansas

The Nature Conservancy—Colorado

The Nature Conservancy—Michigan

The Nature Conservancy—Nevada

The Nature Conservancy—New Mexico

The Nature Conservancy—North Carolina

The Nature Conservancy—Oregon

The Nature Conservancy—Tennessee

The Nature Conservancy—Utah

The Nature Conservancy—Washington

The Nature Conservancy—Wisconsin

U. S. Fish and Wildlife Service

U. S. Forest Service

U. S. Geological Survey

University of Wisconsin—Madison

Wilderness Ranger District

Woods Hole Research Center

**And many more!**

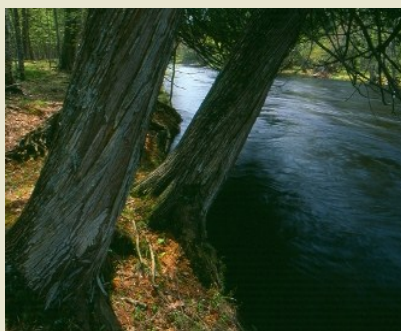
## Selected Projects from the WHAM!

### Eastern Washington Forests “Whole Systems” Assessment



The Washington Chapter of The Nature Conservancy conducted a broad scale assessment of forest conditions in eastern Washington. The assessment is part of a “whole systems” approach designed to account for ecosystem processes and the needs of human communities while setting conservation goals. LANDFIRE’s biophysical settings, succession class, and reference conditions data were used to calculate Ecological Conditions in the study area.

### R. J. Kose Two Hearted River Watershed and Wild Rivers Legacy Forest



The Nature Conservancy in Wisconsin collaborated with the University of Wisconsin—Madison to develop an expert and-data-based modeling project whose objective was to test the potential effectiveness of conservation strategies, both with and without projected climate change scenarios. The collaborators used LANDFIRE Vegetation Dynamics Development Tool models and spatial data as the foundation for scenario modeling efforts.

### Cherokee National Forest Collaborative Restoration Planning



A group of stakeholders coordinated by the Tennessee Chapter of the Nature Conservancy completed an analysis of management options for the North District of the Cherokee National Forest. The process combined local ecological knowledge and spatial data with LANDFIRE spatial data and modified LANDFIRE vegetation models. The analysis resulted in consensus regarding best management approaches for the district.

### Hawai'i Assessment and Resource Strategy Analysis



The Hawai'i Department of Forestry and Wildlife developed its Statewide Assessment of Forest Conditions and Resource Strategy in 2010, and LANDFIRE data sets were key resources in the effort. For each of the nine issues that stakeholders examined, trends, existing conditions, threats, and benefits for forests and treed landscapes were characterized. Partners created maps and developed a set of strategies to address their concerns.