

FIRE

Centennial Valley FLN & Gravelly Landscape

LEARNING

Partner Agencies & Organizations

Bureau of Land Management
 Centennial Valley Association
 Greater Yellowstone Coalition
 Montana Department of Natural Resources and Conservation
 Montana Fish, Wildlife & Parks
 Montana State University
 Private ranch operations
 Ruby Watershed Committee
 The Nature Conservancy
 Trout Unlimited
 U.S. Fish & Wildlife Service—Red Rock Lakes NWR
 University of Montana Western
 USDA Forest Service—Beaverhead-Deerlodge NF (Madison RD)
 USDA Natural Resources Conservation Service
 Wildlife Conservation Society



© TNC/Nathan Korb

Beyond Our Borders

The work of our partnership has built grassroots momentum for collaborative, proactive solutions to ecological issues, and led pioneering science and stewardship across broad range of habitats including sandhills, sagebrush, Douglas-fir, aspen and willow. This has resulted in increased opportunities to allow fires—both prescribed and wildfire—to burn across 40,000 acres of wilderness and other public lands.

Success in Restoring Fire-Adapted Ecosystems

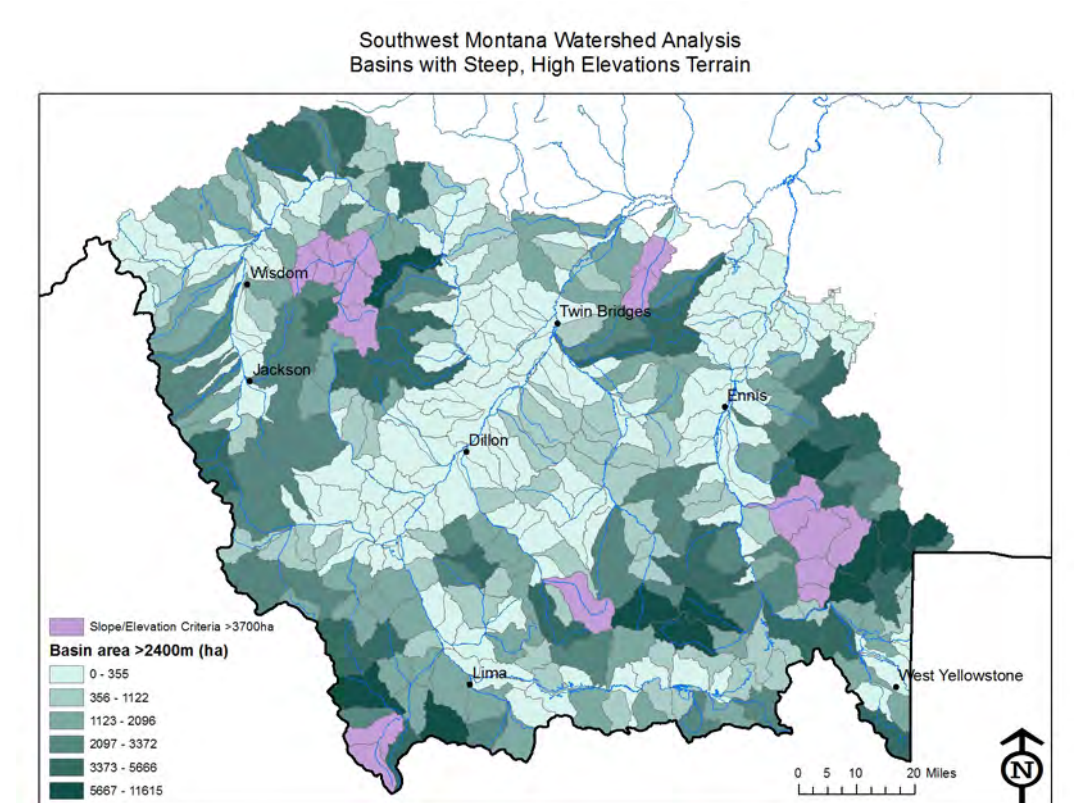
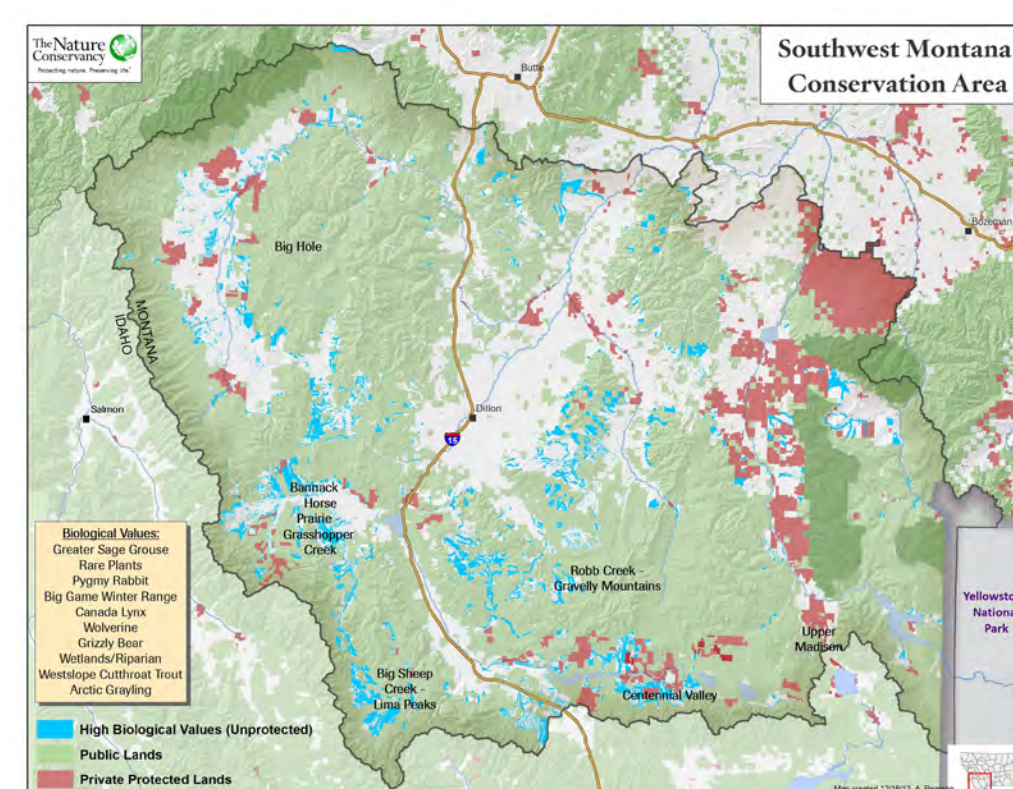
We've worked together to create strategic, widespread, consistent management of Douglas-fir/aspen forests across private, state, Bureau of Land Management and U.S. Fish & Wildlife Service lands in our landscape. The key to doing this has been building a diverse coalition of people who sincerely care about the long-term health of forests and who are willing to learn from one another.



© TNC/Nathan Korb

What We're Learning

In the past year we've been able to hone our strategies to address focused, specific questions: How do we shift the understory over a significant portion of the Douglas-fir forests without killing all the trees? How do we conserve a broad freshwater system with high uncertainty from climate change?



Adaptive Management

We're trying to direct science to provide us with quantitative evaluations of the effects of our conservation actions on target species to accelerate learning and deeply engage both management and research communities in this endeavor.



© TNC/Liz Rank

Looking Ahead

We're looking forward to doubling the scope of our program, expanding from the Centennial and Big Hole Valleys to encompass numerous basins within the Upper Missouri Headwaters.



The Fire Learning Network is supported by Promoting Ecosystem Resiliency through Collaboration: Landscapes, Learning and Restoration, a cooperative agreement between The Nature Conservancy, USDA Forest Service and agencies of the Department of the Interior. For more information, contact Lynn Decker at ldecker@tnc.org or (801) 320-0524.
 An equal opportunity provider