

Effects of Prescribed Fire on Forest Canopy Cover in the George Washington and Jefferson NF



Jean Lorber, TNC VA

Melissa Thomas-Van Gundy, USDA FS NRS

Steve Croy, USDA FS GW/Jeff

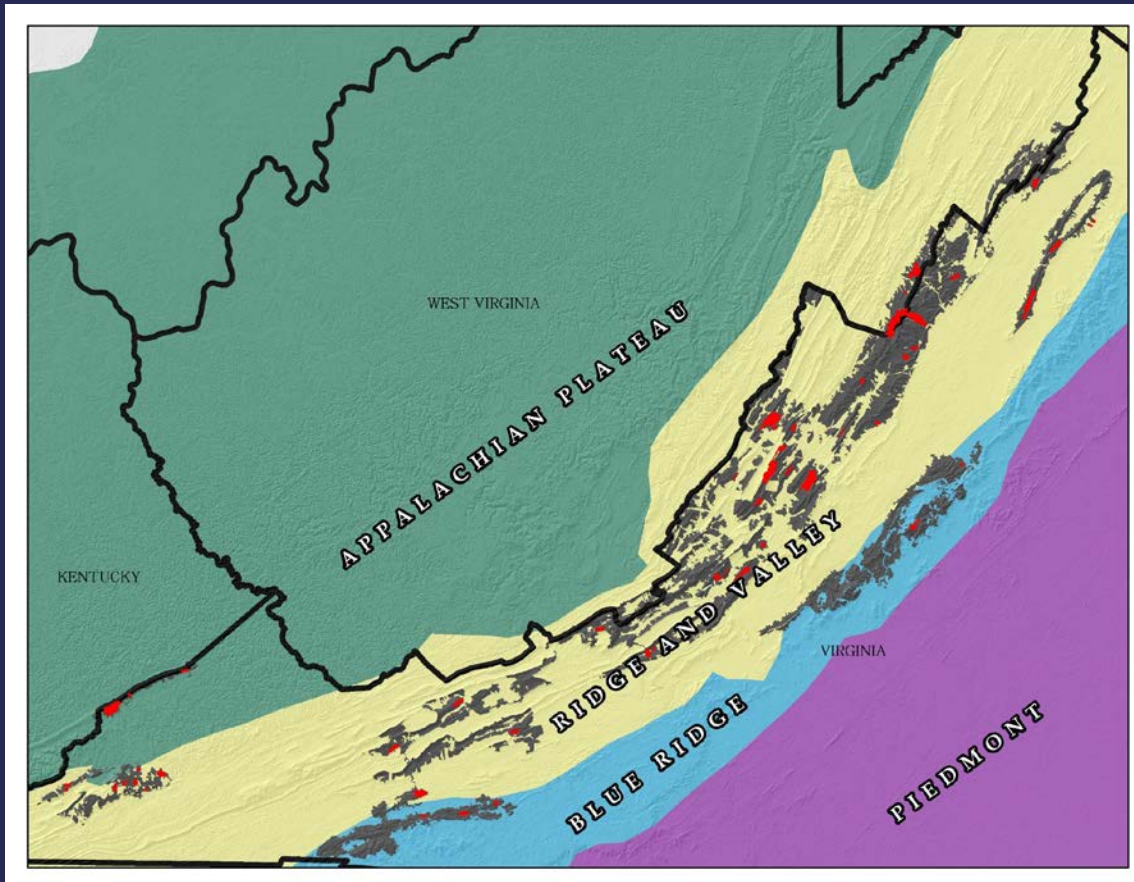
THE QUESTIONS

What happens to tree canopy with prescribed fire?

Are we meeting Forest Plan goals?

Can we predict canopy gaps?

WHERE ARE WE?



WHAT'S THE GOAL?

Re-establish the Natural Range of Variation (NRV) of forest age and structure at a landscape level

EARLY successional forest

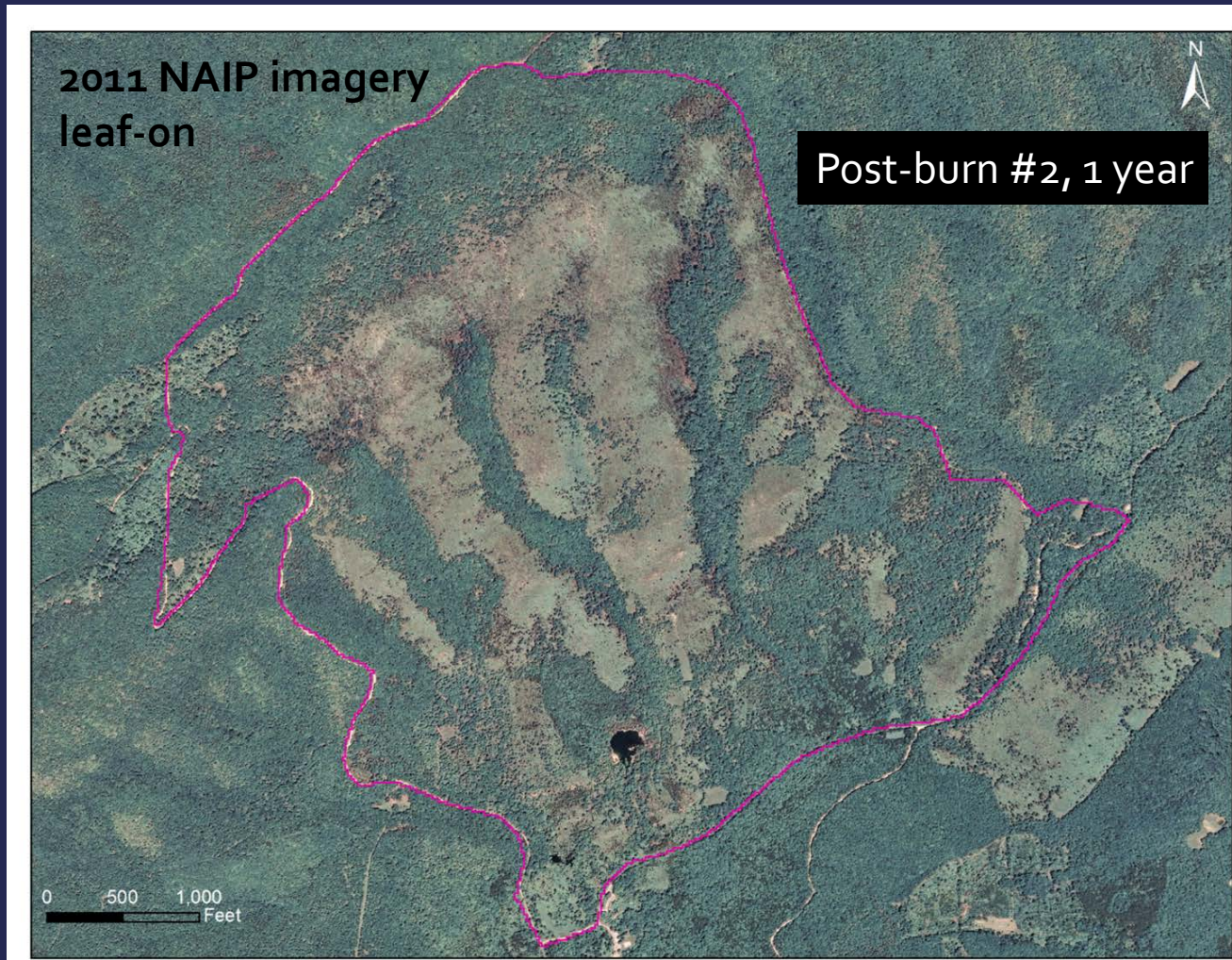
12% of acreage

OPEN forest, all ages

67% of acreage

Oak Forest types	EARLY	Mid-CLOSED	Mid-OPEN	Late-OPEN	Late-CLOSED	Total
Desired % on landscape	12%	7%	10%	57%	14%	100%

HOW CAN WE FIND OUT?



HOW CAN WE FIND OUT?

74 burn units were examined (over 85,000 ac)

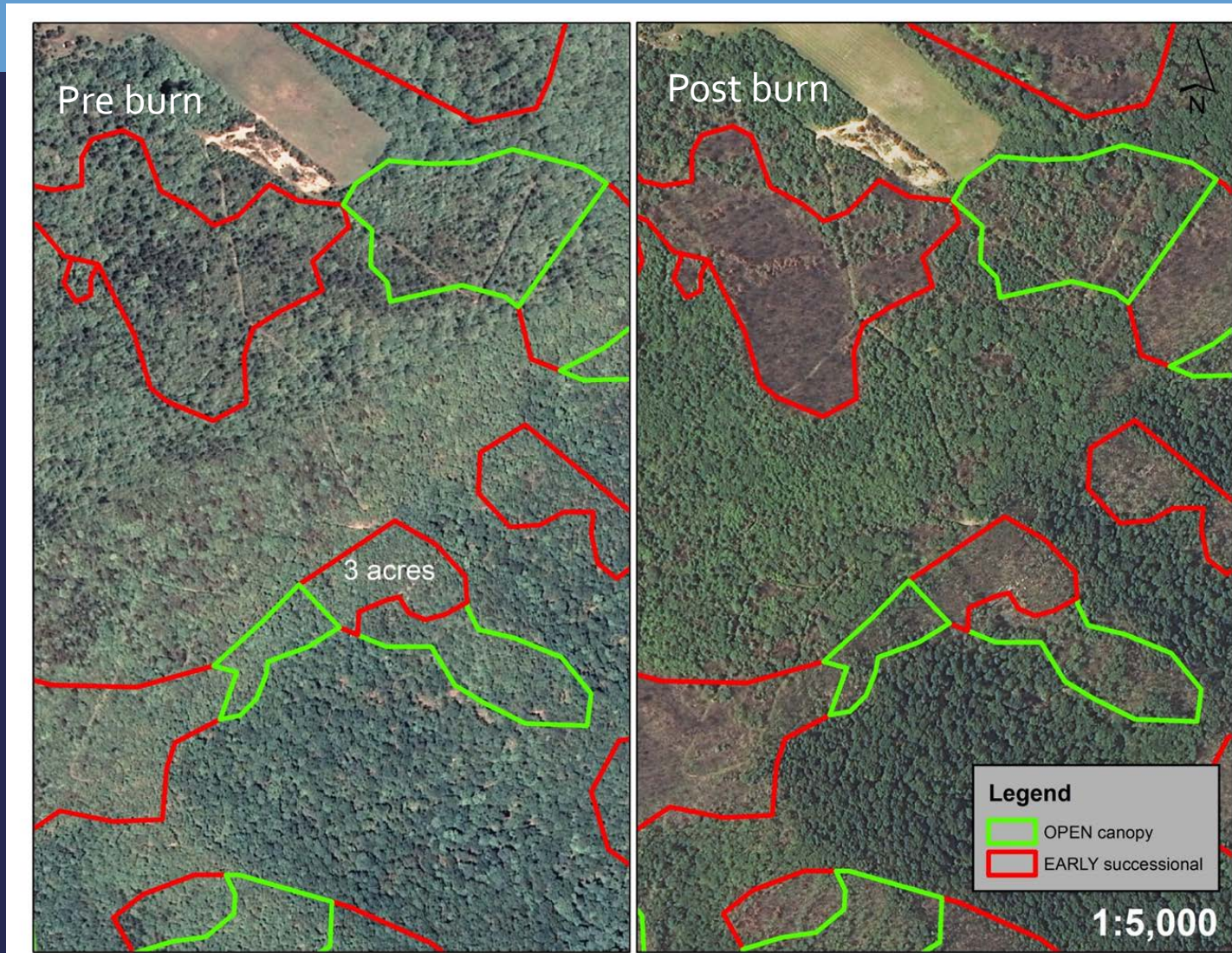
117 burn events, primarily from the late-1990s through 2014

Only burn units over 250 acres were included

Examined canopy cover post-burn, using leaf-on imagery (NAIP)

- 1:5,000 scale
- delineated areas of canopy mortality (gaps)
- **EARLY** <30% canopy cover
- **OPEN** 30-50% canopy cover
- gaps larger than 0.25 ac
- to minimize variability, one person (Jean) digitized all gaps

MORE HOW

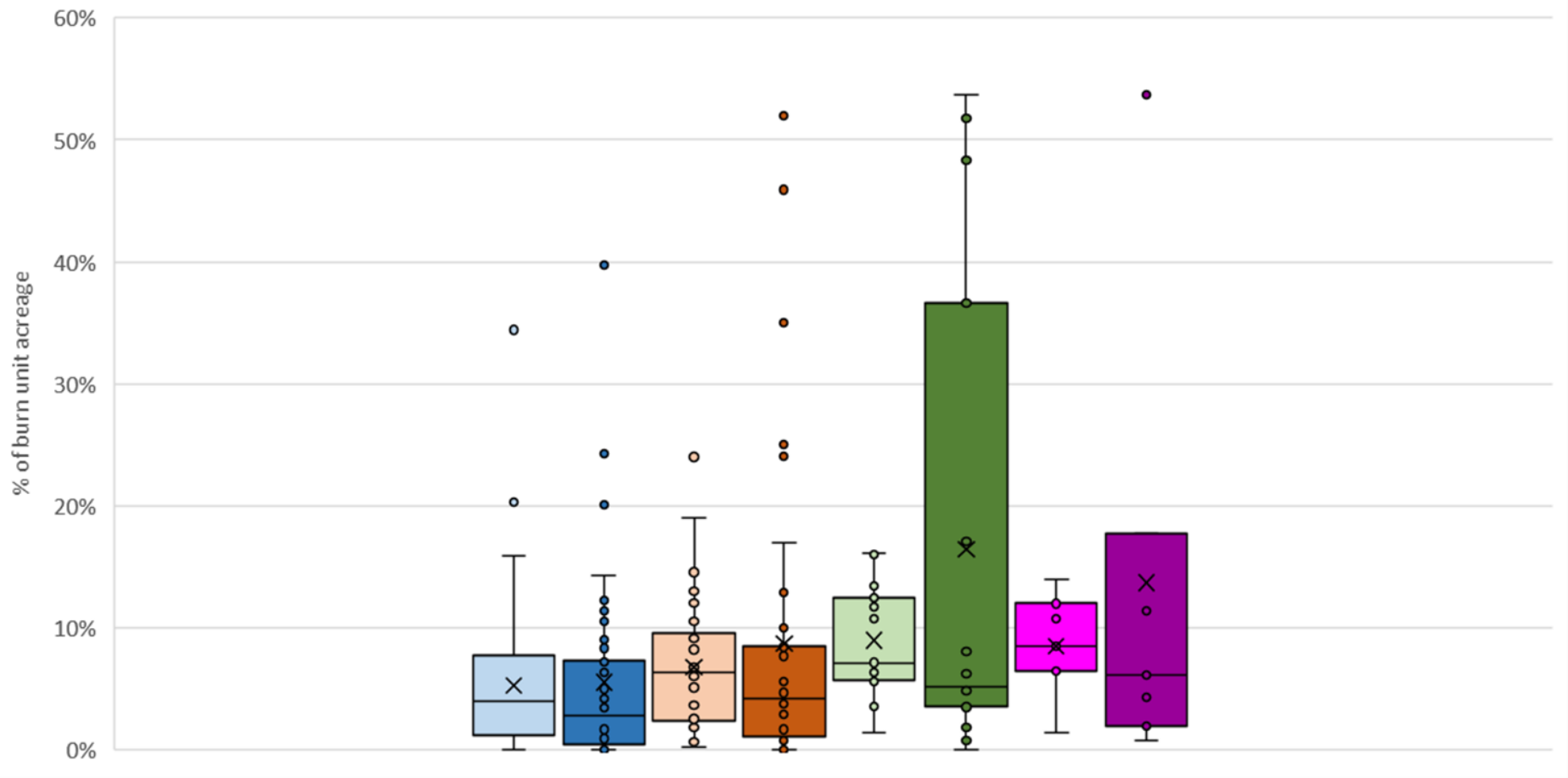


ARE WE MEETING THE GOALS?

Burn history category	Mean percentage EARLY ± SE (range)	Mean percentage OPEN ± SE (range)	Mean percentage All GAPS ± SE (range)
1-burn	5.0 ± 1.0 (0-40)	5.0 ± 1.0 (0-34)	11.0 ± 2.0 (0-54)
2-burn	9.0 ± 2.0 (0-52)	7.0 ± 1.0 (0-24)	16.0 ± 3.0 (0-64)
3-burn	17.0 ± 5.0 (0-54)	9.1 ± 1.0 (1-16)	26.0 ± 6.0 (2-64)
4-burn	14.0 ± 7.0 (1-54)	8.0 ± 2.0 (1-14)	22.0 ± 8.0 (8-64)

EARLY **12%** of acreage

OPEN **67%** of acreage



MEAN GAP SIZE

Burn history category	EARLY		OPEN	
	Mean gap size (ac)	Median gap size (ac)	Mean gap size (ac)	Median gap size (ac)
1-burn	7.2	3.1	4.6	2.7
2-burn	6.6	2.0	4.0	2.3
3-burn	13.8	2.9	5.2	3.0
4-burn	8.2	2.5	4.7	3.2

REPEATED BURNS

Burn history category	Total area (acres)	Mean percentage EARLY \pm SE	Mean percentage OPEN \pm SE
1-burn (n=24)	24,810	5.2 \pm 2.0	5.1 \pm 1.5
2-burn (n=24)		10.2 \pm 3.0	5.7 \pm 0.9
2-burn (n=10)	8,360	16.6 \pm 6.3	8.2 \pm 1.2
3-burn (n=10)		18.0 \pm 6.5	9.2 \pm 1.3
1-burn (n=6)	5,356	14.7 \pm 6.6	10.3 \pm 5.3
3-burn (n=6)		25.3 \pm 9.7	9.2 \pm 1.9

CAN WE PREDICT CANOPY GAPS?

