

FLN Networker No. 209: April 27, 2016

The FLN Networker is a publication of the Fire Learning Network—a partnership of the USDA Forest Service, agencies of the Department of the Interior and The Nature Conservancy—intended to foster communication within the network and among its friends. Submit comments, information to share, and subscription requests to Liz Rank.

For more about the FLN, visit www.conservationgateway.org/fln or contact Lynn Decker.

News from the Field

California: The Yurok Tribe's **Warrior Institute spring camp** drew **21 young people** for a weekend of camping, cooking fish by the fire, and learning about different plants, their uses and their dependence upon fire. On their hike in, they stopped at a spot where they could see the footprints of **three fire-related situations**—a wildfire, a prescribed burn and an area with brush removed but not yet burned—and observe and learn about the condition of **culturally important plants** in those areas. To see where the Warrior Institute fits into the life cycle of a fire practitioner in this landscape, see the [new poster](#) about the **Indigenous Peoples Burning Network** (IPBN).

Nebraska: **Amanda Hefner** (amanda.hefner@tnc.org) put together a **really nice video** from last month's **Niobrara TRENCH**. [The video](#) features a **member of a local volunteer fire department**, relatively new to fire, talking about his TRENCH experience, and how he sees it helping him, and his department.

North Carolina: The **Southern Blue Ridge FLN** has completed a **podcast-style interpretive tour** of the Grandfather Ranger District on the Pisgah National Forest near the **Linville Gorge Wilderness Area**. The **Fire Learning Trail** introduces visitors to the **role of fire** in this area, along with wildland firefighters and local history. The audio—which supplements signs on the trail—is available on **free CDs** at the Linville Gorge Information Cabin, or can be **downloaded** from iTunes or the **Consortium of Appalachian Fire Managers and Scientists'** [website](#).

Pacific Northwest: Core members of the **FAC Net** from Oregon and Washington are in the midst of a series of **three learning exchanges**. For each exchange they travel to one member community to see their work on the ground and hold in-depth conversations. A [blog post](#) from the first exchange—hosted by Project Wildfire in Bend, OR—talks about the event itself, as well as the **difference** between an **ordinary “field trip”** and a **learning exchange**.

Washington: **Reese Lolley** (rlolley@tnc.org) and **Dale Swedberg** (dale.swedberg@dfw.wa.gov) are among those quoted in the article “**Legislation Aims to Increase Prescribed Burning** in Washington” in the *Methow Valley News*. Washington state has been conducting much less prescribed burning than neighboring Idaho and Oregon. “We’ve got the **whole state rethinking how we live with fire** and how we live in a place that burns,” according to Reese. The legislation calls for a pilot project with evaluation of burn effectiveness and smoke impacts.

National: Members of the **FLN, FAC Net, IPBN** and key partners are meeting in an **annual workshop** in Jacksonville, FL this week. **Live(ish) updates** are being posted on the FAC Net Facebook page (<http://facebook.com/facnetwork>) and on Twitter (#FireNetworks2016), and a couple of **posters** from this evening's session are posted on the Conservation Gateway—an [overview of TRENCH](#), and PERC agreement [final report highlights](#).

Request for Feedback: LANDFIRE

LANDFIRE: The LANDFIRE program has developed a **Fire Behavior Fuel Model Guidebook-Database** and is requesting **review and feedback** from interested fuel specialists, fire operations personnel, fire planners, fire ecologists, etc. The process will include a **series of regional webinars**, which will take place between tomorrow (Southeast) and early June. Details, including webinar registration information, are in the attached memo.

Resource: Wildfire Tracking

Wildfire Tracking: The (fairly) new [website Wildfires Near Me](#) pulls fire information from **iRWIn**, the official federal database, and offers some **customizable** ways of keeping track of fires—including alerts about fires in an area you specify, custom hashtags for each fire, and a means of uploading photos to the fire map.

Articles & Reports: Erosion / IFTDSS / Karuk TEK

Erosion: The University of Arizona has a [news release](#) highlighting findings from the article “The Predominance of **Post-Wildfire Erosion** in the Long-Term Denudation of the **Valles Caldera**, New Mexico,” to be published in the *Journal of Geophysical Research: Earth Surface*. Over very long time scales, the “scientists found more than **90 percent of the erosion** happened in the geologically brief time intervals right after forest fires [which] constituted just **3 percent of the total time.**”

IFTDSS: The [article](#) “The **Interagency Fuels Treatment Decision Support System: Functionality for Fuels Treatment Planning**” (in *Fire Ecology*) discusses version 2.0 of IFTDSS, a **beta release** being developed by the Interagency Wildland Fire Management Research, Development, and Applications Team. IFTDSS is being developed to make the **current software “chaos”** of tools and systems for simulating the effects of treatments of fire behavior and fire effects more **coherent**.

Karuk TEK: The [report](#) “Karuk **Traditional Ecological Knowledge** and the Need for Knowledge Sovereignty: Social, Cultural and Economic Impacts of Denied Access to Traditional Management” is the first of a two-part series produced under the North Pacific Landscape Conservation Cooperative Tribal Climate Change **initiative on knowledge sovereignty**. “The continuing loss of Karuk knowledge has both serious ecological consequences, and grave consequences for Karuk culture, social systems and political sovereignty.” The report outlines the **connection of tribal knowledge to cultural practices** and thus the importance of Karuk sovereignty over traditional ecological knowledge in a **changing climate**.

In the News: New Jersey

New Jersey: For anyone wondering why the **FAC Learning Network** has a **core member** in the **pinelands** of New Jersey, read the [article](#) “Will America's Worst Wildfire Disaster Happen in New Jersey?” in *Rolling Stone*.

Jobs: Fire Ecologists / Stewardship Assistant

Fire Ecologists: The **Rogue River-Siskiyou National Forest** is conducting **outreach** to fill **two fire ecologist positions**. Details are in the attached flyer; letters of interest are due by **April 29**.

Stewardship Assistant: The **Conservancy's North Carolina chapter** is hiring a **Southern Blue Ridge Stewardship Assistant** to assist with preserve management and work on projects on the Grandfather CFLRP project. Details are available at careers.nature.org ([Job ID 44148](#)); applications are due by **May 6**.

Webinars

May 3

BpS Review in the Northern Rockies: What is it? How Does it Work? Why Does it Matter?

11:00 Pacific / noon Mountain / 1:00 Central / 2:00 Eastern

LANDFIRE Program Manager Jim Smith will be the presenter for this Northern Rockies Fire Science Network webinar.

Information & registration: <http://nrfirescience.org/event/bps-review-northern-rockies-what-it-how-does-it-work-why-does-it-matter>

May 12
new listing

LANDFIRE Update and Biophysical Settings Review: Why You Should Care

10:00 Pacific / 11:00 Mountain / noon Central / 1:00 Eastern

LANDFIRE Program Manager Jim Smith will be the presenter for this webinar co-hosted with the Southern Fire Exchange. Includes a primer on BpS, example, and information on getting involved in the update.

Information & registration: <https://www.eventbrite.com/e/southern-fire-exchange-webinar-landfire-update-and-biophysical-settings-review-why-should-you-care-tickets-22905235175>

FLN and FAC Net Workshops & Field Tours

April 25-29

National FLN-FAC Net Workshop / Jacksonville, FL

Leads from the networks, along with key national partners, are meeting to exchange information, strengthen the ties between the networks and plan the coming year's work.

May 11-12

Western Klamath Restoration Partnership / Forks of Salmon, CA

Save the date for the 14th WKRP workshop.

Information: Scott Harding (fire@srrc.org)

May 13-14

Yurok-Hupa-Karuk Indigenous Peoples Burning Network / TBD, CA

Save the date for the next IPBN workshop.

Information: Mary Huffman (mhuffman@tnc.org)

May 17-19

Southern Blue Ridge FLN / Johnson City, TN

This workshop will be held in the Great Smoky and Unaka Mountains Landscape, with a field tour of project areas in the Cherokee National Forest. Registration closes April 30.

Information & registration: <http://sbrfln2016.weebly.com/>

June 7-8

Texas Shortleaf Pine Initiative / Rusk, TX

The South Central FLN is a key partner in the growing multi-state Shortleaf Pine Initiative. For more about the SPI, contact McRee Anderson (wanderson@tnc.org). Information & registration for this workshop: mzavala@tfs.tamu.edu

June 9

Georgia Blue Ridge Field Tour / GA

Partners in the Georgia Blue Ridge FLN landscape will tour Chestnut Mountain, where a history of several fires has resulted in a rich and diverse woodland. They will also visit a local community, and learn more about its efforts to prepare for fire. Information: Malcolm Hodges (mhodes@tnc.org)

November 2-3

Central Appalachians FLN / Wintergreen Resort, VA

Save the date and stay tuned.

November 29

Georgia Blue Ridge FLN Annual Workshop / Blairsville, GA

Information: Malcolm Hodges (mhodes@tnc.org)

FLN Prescribed Fire Training Exchanges

April 25-May 6

Central Oregon Prescribed Fire Training Exchange / Bend, OR

The application deadline for this TREX has passed.

May 9-21

Ashland Prescribed Fire Training Exchange / Ashland, OR

The application deadline for this TREX has passed.

**September 14-30
deadline**

Spanish-language Prescribed Fire Training Exchange / Santa Fe, NM

This TREX, conducted in Spanish, will again take place on and around the Santa Fe National Forest in northern New Mexico, with participants from numerous countries and U.S. states. The application deadline is **May 6**.

Information: <http://www.conservationgateway.org/ConservationPractices/FireLandscapes/HabitatProtectionandRestoration/Training/TrainingExchanges/Pages/2016-Espanol-TREX.aspx>

Conferences, Workshops, Training, Etc.

May 2-3

Wildfire Habitat Restoration on Private Lands—Field Tours / northern AR

The Oak Woodlands & Forests Fire Consortium will host two one-day field tours as part of this joint offering. Tours will cover the pine-bluestem restoration on the Ouachita NF and glade and fire management at City Rock Bluff.

Information & registration for one or both of these two days:

<http://www.oakfirescience.com/events-webinars-source/arkansasfiretour>

May 4-5

Wildfire Habitat Restoration on Private Lands—Part II / Batesville, AR

The second two days of this conference will be hosted by the Arkansas Private Land Partnership. Both days will include field tours or demonstrations and indoor presentations.

Information and registration for one or both of these two days:

<http://www.uaex.edu/environment-nature/wildlife/conferences/>

May 5-6

Assessing Wildfire Hazards in the Home Ignition Zone / Portland, OR

See May 20-21 listing for details.

May 7

Wildfire Community Preparedness Day / Everytown, USA

Information: <http://www.nfpa.org/safety-information/for-consumers/outdoors/wildland-fires/national-wildfire-community-preparedness-day>

May 20-21

Assessing Wildfire Hazards in the Home Ignition Zone / Spokane, WA

This seminar is offered by the Department of Homeland Security/FEMA for local fire departments (including VFDs); state fire employees are also eligible if space permits. Travel scholarships are available.

Information: http://www.nfpa.org/safety-information/for-consumers/outdoors/wildland-fires/wildfire-safety-training-and-conferences/assessing-wildfire-hazards-in-the-home-ignition-zone-courses?order_src=C365

**June 20-22
new listing**

Wood Utilization in the WUI / Colorado Springs, CO

This workshop is offered by the Colorado State Forest Service in partnership with the Southern Rockies Fire Sciences Network, U.S. Forest Service, Colorado Department of Natural Resources, Colorado Tree Farm and the Society of American Foresters.

Information: <https://www.eventbrite.com/e/wood-utilization-in-the-wui-csfs-partners-workshop-tickets-24110793031>

July 17-20

North American Prairie Conference—From Cemetery Prairies to National Tallgrass Prairies / Normal, IL

Illinois State University is hosting this conference, with presentations on prairie ecology, restoration, management and some innovative ideas on working lands.

Information: <http://nap2016.illinoisstate.edu/>

- November 14-17** **International Smoke Symposium / Long Beach, CA**
 The IAWF and the NWCG SmoC (smoke committee) will be hosting this in-person / virtual symposium. The call for presentations is open; submissions are due by May 16. The call for workshop proposals is now open; submissions are due by May 2. Information: <http://www.iawfonline.org/2016SmokeSymposium/>
- Nov. 28–Dec. 2** **Southwest Fire Ecology Conference / Tucson, AZ**
 “Beyond Hazardous Fuels: Managing Fire for Social, Economic and Ecological Benefits” is being hosted by AFE and the Southwest Fire Science Consortium. Submissions for special sessions, workshops and trainings, attached meetings, and oral and poster presentations are now being accepted.
 Information: <http://swfireconference.org/>

Send News, Links & Comments

- Lynn Decker** – ldecker@tnc.org – Lynn is in Jacksonville, FL Apr 25-29.
- Guy Duffner** – gduffner@tnc.org – Guy is in Jacksonville, FL Apr 25-29; out May 2; in Forks of Salmon, CA May 9-15.
- Heather Montanye** – hmontanye@tnc.org – Heather is in Jacksonville, FL Apr 26-29.
- Jeremy Bailey** – jeremy_bailey@tnc.org – Jeremy is in Jacksonville, FL Apr 25-29; in Ashland, OR May 7-22.
- Mary Huffman** – mhuffman@tnc.org – Mary is in Jacksonville, FL Apr 25-29; out May 2; in Forks of Salmon, CA May 9-15.
- Wendy Fulks** – wfulks@tnc.org – Wendy is in Jacksonville, FL Apr 25-29.
- Liz Rank** (editor) – lrank@tnc.org – Liz is in Jacksonville, FL Apr 25-29; out May 6-9.

To stop receiving the FLN Networker, please reply to this message and include your request in the body of the message.

Full Links

- News from the Field—CA: <https://www.conservationgateway.org/ConservationPractices/FireLandscapes/FireLearningNetwork/RegionalNetworks/Pages/IPBN-Poster-Apr2016.aspx>
- News from the Field—Pacific NW: <http://fireadaptednetwork.org/more-than-just-another-fire-truck/>
- News from the Field—NE: https://www.youtube.com/watch?v=cqelD1Pyw_uA&feature=youtu.be
- News from the Field—NC: <http://www.appalachianfire.org/thefirelearningtrail/>
- News from the Field—TREX poster: <http://www.conservationgateway.org/ConservationPractices/FireLandscapes/HabitatProtectionandRestoration/Training/TrainingExchanges/Pages/Poster-TREX-Apr-2016.aspx>
- PERC poster: <https://www.conservationgateway.org/ConservationPractices/FireLandscapes/FireLearningNetwork/Pages/PERC-FinalReport-Poster-2016.aspx>
- Resource—Wildfire tracking: <http://www.wildfiresnearme.wfmrda.com/>
- Articles & Reports—Erosion: <https://uanews.arizona.edu/story/post-wildfire-erosion-can-sculpt-forested-mountains>
- Articles & Reports--IFTDSS: <http://fireecologyjournal.org/docs/Journal/pdf/Volume12/Issue01/103.pdf>
- Articles & Reports: <https://blogs.uoregon.edu/tribalclimate/files/2010/11/Final-pt-1-KARUK-TEK-AND-THE-NEED-FOR-KNOWLEDGE-SOVEREIGNTY-1phd94j.pdf>
- In the News--New Jersey: <http://www.rollingstone.com/culture/features/wild-america-worst-wildfire-disaster-happen-in-new-jersey-20160420>

The Fire Learning Network is supported by *Promoting Ecosystem Resilience and Fire Adapted Communities Together: Collaborative Engagement, Collective Action and Co-ownership of Fire*, a cooperative agreement between The Nature Conservancy, USDA Forest Service and agencies of the Department of the Interior.

In accordance with Federal law and U.S. Department of Agriculture policy, this institution is prohibited from discriminating on the basis of race, color, national origin, sex, age, or disability. (Not all prohibited bases apply to all programs.) To file a complaint of discrimination, write USDA, Director, Office of Civil Rights, Room 326-W, Whitten Building, 1400 Independence Avenue SW, Washington, DC 20250-9410 or call (202) 720-5964 (voice and TDD). USDA is an equal opportunity provider and employer.



**USDA Forest Service & Department of the Interior
LANDFIRE Fire Behavior Fuel Model Guidebook-Database**



Date: April 8, 2016

Subject: LANDFIRE FBFM Guidebook-Database - *Webinar schedule – Spring of 2016*
Review of vegetation characteristics and FBFM rules

To: Interested Individuals (Fuel Specialists, Fire Operations, Fire Planners, Fire Ecologists, etc.)

We are excited to announce that the LANDFIRE program has developed a Fire Behavior Fuel Model (FBFM) Guidebook-Database. In the past, LANDFIRE conducted a series of calibration workshops across the country soliciting input on FBFM mapping rule relationships. This was a successful effort but challenging given travel and participation across the US. Given the success of other efforts to improve the classification of FBFMs, (Alaska Guidebook, SE SWRA updates) the LANDFIRE program has developed a web-based database. This database is framed in a content management system to help guide people through a review process of the FBFM mapping rules. The framework provides a structure to gather feedback and suggestions about how to improve the mapping rules and will inform how FBFMs are potentially mapped in the future.

We are contacting you to request your participation to review and provide feedback on the FBFM mapping rules for the Geo Areas of the conterminous United States (CONUS). This review was initially planned to go through the fall of 2016 but will be continuing into 2017. Your participation will result in possible refinement of the FBFM mapping rules. Implementation of this interactive approach will greatly enhance the incorporation of knowledge in the mapping of fuel models from the vegetation data characteristics within LANDFIRE. The initial kickoff for this review is at the International Association of Wildland Fire (IAWF) 5th Fire Behavior and Fuels Conference in Portland April 11-15, 2016 with a workshop on Monday.

The first series of webinars will start the end of April and finish by early July. We realize this schedule may not work for everyone. As such, additional webinars will potentially be conducted in the fall and again next year. Details on these additional webinars will be provided later. Also, it is important to note that participation in a specific geographic area where you work is not critical but would be helpful as the webinars are designed to provide an orientation to the database and process where individuals will then be able to work through the database at your own pace providing feedback and comments. For this first series, each webinar will be three hours in length. Below is a schedule for the webinars by Geo Area. On the next page is information to register for the planned webinars.

Geographic Area	Webinar Date	Time
Southeast	Thursday 4/28/2016	1 to 4pm eastern
South Central	Thursday 5/12/2016	1 to 4pm central
Southwest	Thursday 5/19/2016	noon to 3pm mountain
Northwest	Thursday 5/26/2016	11 to 2pm pacific
North Central	Thursday 6/2/2016	1 to 4pm central
Northeast	Thursday 6/9/2016	1 to 4pm eastern

Following this first series of webinars, we will hold conference calls or webinars to address specific issues that emerge from our analyses of database results (your edits, comments, and feedback).

Please become an authorized user by sending an email to: landfire@northwestknowledge.net. Once you are an authorized user, please visit <https://landfire.nkn.uidaho.edu/user> and view the Home page and Demo pages.

Wendel Hann and Linda Tedrow of the University of Idaho are leading and working on this effort. Also, many of the LANDFIRE staff contributed in some manner to this effort. Please contact Wendel if you would like more information at wendelhann@gmail.com or 575-519-9734 or visit http://www.landfire.gov/lf_opportunities.php

This guidebook-database is a very important effort with both science and management implications. We greatly appreciate your willingness to participate in the enhancement of the FBFMs in LANDFIRE.

Sincerely,

Frank Fay – USDA FS FAM, LANDFIRE Business Lead
Henry Bastian – US DOI OWF, LANDFIRE Business Lead

IMPORTANT: In order to participate in the webinar you need to pre-register for the planned webinars. Please use the links below to register for these webinars.

GoToWebinar Registration Links		
Geographic Area	Webinar Date	Time
Southeast	Thursday 4/28/2016	1 to 4pm eastern
Registration URL: https://attendee.gotowebinar.com/register/5447421881963262211 Webinar ID: 145-962-339		
South Central	Thursday 5/12/2016	1 to 4pm central
Registration URL: https://attendee.gotowebinar.com/register/6639318874751862019 Webinar ID: 102-359-043		
Southwest	Thursday 5/19/2016	noon to 3pm mountain
Registration URL: https://attendee.gotowebinar.com/register/8878624937810731267 Webinar ID: 104-725-923		
Northwest	Thursday 5/26/2016	11 to 2pm pacific
Registration URL: https://attendee.gotowebinar.com/register/4018404211529309955 Webinar ID: 106-731-955		
North Central	Thursday 6/2/2016	1 to 4pm central
Registration URL: https://attendee.gotowebinar.com/register/5489131855563454211 Webinar ID: 108-997-699		
Northeast	Thursday 6/9/2016	1 to 4pm eastern
Registration URL: https://attendee.gotowebinar.com/register/5985266686388099075 Webinar ID: 109-315-923		

The Rogue River-Siskiyou National Forest
OUTREACH NOTICE for two
FIRE ECOLOGISTS

Position: **Fire Ecologist, GS-0401-9/11 – Permanent, 2 Positions**

Locations: **1 Position will be located at the Wild Rivers Ranger District in Cave Junction, OR and will be responsible for three ranger districts: Wild Rivers, Gold Beach and Powers.**
1 Position will be located at the Siskiyou Mountains Ranger District in Jacksonville, OR and will be responsible for two ranger districts: Siskiyou Mountains and High Cascades.

Questions? **Contact Matt Paciorek, District Ranger, Wild Rivers RD at 541-592-4001**

Interested? **Submit your letter of interest to mpaciorek@fs.fed.us by April 29, 2016**

About the Position

Incumbent serves as a Fire Ecologist on a National Forest unit. The incumbent is responsible for collection and analysis of field data, project, and landscape level planning input, and technical assistance needed for reestablishing fire's role in the ecological systems. Carries out studies, field reviews, and provides technical assistance on fire ecology and operations to all disciplines.

Other Info:

This is a secondary firefighter position under 5 USC 8336(c) (CSRS) and 8412(d) (FERS). At least 90 days of wildland firefighting experience is required. There is no age limit for entry into secondary positions. Firefighter retirement coverage of the incumbent depends upon his or her individual work history.

WORK CAPACITY TEST (WCT) for Wildland Firefighters: This position participates in wildland firefighting activities. Based on the type of work performed, TAKING and PASSING the WCT at the MODERATE level is a "condition of employment." The Moderate fitness (Field) test requires completing a two (2) mile hike within thirty (30) minutes, while carrying a twenty-five (25) pound pack.

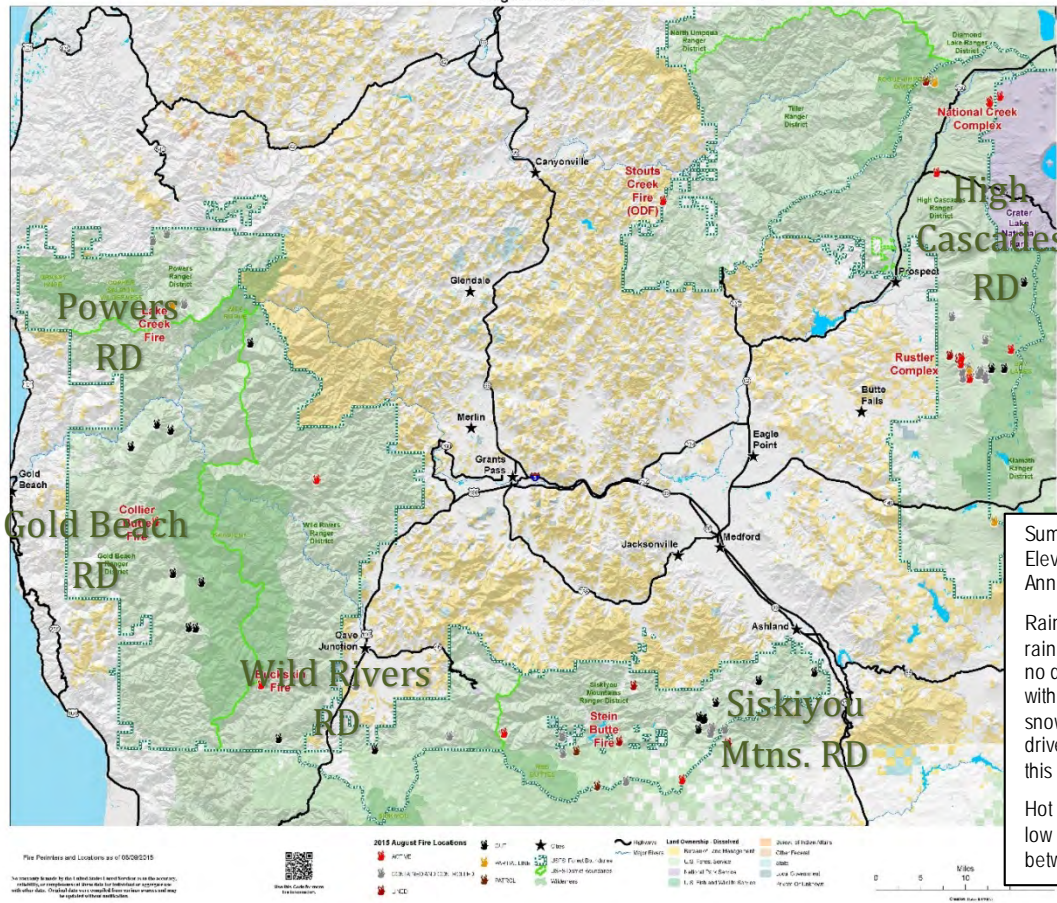
Performs wildfire suppression support as directed within training and physical capabilities.

Note: The purpose of this outreach is to determine potential interest in this opportunity.

Rogue-Siskiyou National Forest

Located in southwestern Oregon and extending into California, the Forest ranges from the crest of the Cascades Mountains west into the Siskiyou Mountains, nearly to the Pacific Ocean. The Forest covers almost 1.8 million acres; portions extend into northern California. The Rogue River drains over 75 percent of the Forest's land area. The Supervisor's Office is located in Medford, OR. It has five ranger districts: High Cascades, Siskiyou Mountains, Wild Rivers, Gold Beach, and Powers. Field offices remain in the communities of Prospect, Butte Falls, Grants Pass, Cave Junction, Jacksonville, Gold Beach, and Powers. The Forest also is home of the J. Herbert Stone Nursery located near Central Point.

The Rogue River-Siskiyou National Forest embraces a treasure of botanical diversity, and is home to incredible wild and scenic rivers, isolated wilderness, outstanding fisheries and wildlife resources, and breath-taking landscapes of mountains, meadows, streams, and lakes. The forest itself is composed of two distinct geological provinces: The Cascade Range and the Siskiyou Mountains. The Cascade Range is dominated by snowcapped volcanic peaks. The Siskiyou area embodies the most complex soils, geology, landscape, and plant communities in the Pacific Northwest.



Summer 70 F – 100 F Winter: 30 F – 65 F
 Elevation: 1569 ft
 Annual Rainfall: 20 inches

Rainy in the winter with December being the rainiest month. Some snow fall but usually no deep freeze. Winters tend to be mild with the surrounding mountains capped in snow. Snow chains are often required to drive over the passes to get into or out of this region.

Hot and dry during the summer with very low humidity. Temperatures drop 30° between late afternoon and night time.

Wild Rivers Ranger District

One position will be located at the Wild Rivers Ranger Station in Cave Junction, OR.

The Wild Rivers Ranger District is known for its wild rivers, botanical diversity, old growth forests, and rugged character. Located in beautiful Southwest Oregon, it extends from west of the city of Grants Pass to the middle of the Kalmiopsis Wilderness, from Northern California to the Rogue River and the lower portion of the Applegate Valley. Major access routes are Interstate 5 and Highway 199. It is situated in the center of remote forest lands with the Kalmiopsis Wilderness in the north and west, the Siskiyou and Red Buttes Wilderness in the south, and many sparsely roaded acres in between.

Community:

Cave Junction, located 12 miles north of the California border 30 miles southwest of Grants Pass is home to the *Wild Rivers Ranger Station*. With a population of 1,900 it is the major town in the beautiful Illinois Valley.

Nearby Attractions: The area offers hiking, fishing, rafting, kayaking, bicycling, sledding and much more. In the mountains you can camp, hunt, hike or explore the Kalmiopsis Wilderness Area where the plant life is a botanical wonder. Nearby golf courses include the Grants Pass Golf Club an 18 hole semi-private course and the Illinois Valley Golf Course, A 9-hole par 36 course located in Cave Junction. Near Cave Junction is the state’s first national monument, the Oregon Caves.

The Pacific Coast is about a one hour drive from Cave Junction and the Wild Rivers Ranger Station. The coast boasts tide pools, beautiful beaches, and plenty of lodging and restaurants. On the way, travelers will pass through the Redwoods National Park.

Grants Pass, with a population around 26,000, is located in the heart of the Rogue River Valley, and is home to the *Grants Pass Interagency Office*.

Climate: The weather in the winter is cool and wet with temperatures ranging from the mid 20's to mid 40's and summers are warm and dry with temperatures mainly in the 80-100 degree range. The average rainfall is about 45 inches. It snows in the higher elevations but the valley floor gets snow about once or twice in the winter and rarely lasts more than a day or two. **Housing:** Home prices are from \$175,000 and up, and rents are from \$985 and up for a 3 bedroom 2 bath house. No government housing is currently available. **Medical Facilities:** Both Grants Pass and Cave Junction offer primary care professionals, pharmacies, optometrists, dentists, chiropractors, and other health services. Three Rivers Medical Center, located in Grants Pass, is the regional hospital. **Education:** The Three Rivers School District and Rogue Community College serve both Grants Pass and Cave Junction along with a handful of private schools.

Siskiyou Mountains RD:

One Position will be located at the Siskiyou Mountains Ranger District in Jacksonville, OR.

The Applegate Ranger District is located 14 miles south of Jacksonville in the Applegate Valley of the Siskiyou Mountains. The average rainfall is 25 1/2 inches per year, temperatures range from Winter 20/55 - Summer 45/100.

The Siskiyou Mountains run east and west to form a bridge connecting the Coast Range and the Cascade Mountains. The Applegate River originates in the Applegate Ranger District. Anadromous fish species such as silver and chinook salmon and steelhead, spawn and are reared in the Applegate River before making their way to the ocean via the Rogue River. Ten miles up the Applegate River from the Ranger Station is the Applegate Dam and 988 acre reservoir, Applegate Lake. One can look south across the lake to the peaks of the majestic Red Butte Wilderness.

Six miles north of Applegate Ranger District is Ruch, a small community with an elementary school, two churches, 2 grocery stores, a service station, three restaurants, and a small shopping center. Jacksonville, the nearest community of any real size, with a population of approximately 2,000, is located 14 miles north of the district. Nineteen miles away in the Rogue Valley is Medford, a full service community of 46,000. Southern Oregon University is located in nearby Ashland.

Jacksonville, Oregon: Recently named as "One of America's Top 10 Coolest Small Towns" by Budget Travel Magazine, and listed as one of 18 "Best Places to Live" by Men's Journal, Jacksonville, Oregon combines the gentle ambiance of a historic small town with a vibrant cultural scene. Offering numerous wineries and tasting rooms, a summer long music and performing arts festival, unique shopping and dining options and an easy-going attitude all in flat out gorgeous surroundings.

Having preserved its gold rush roots from the 1850's, it is designated as a National Historic Landmark.

For the outdoors folk the Woodlands Trail System offers 20+ miles of trails for hiking and the Forest Park is great for hiking and mountain biking.

For culture seekers the Britt Festival offers a wide range of musical performances from June through September; and just 20 minutes away in Ashland, Oregon is the Oregon Shakespeare Festival from February through November.

Climate: Cradled in the foothills of the Siskiyou Mountains, Jacksonville is located in what's called the "banana belt" of the Pacific Northwest. The temperature is moderate and the seasons distinctive. Early Spring is a show of wildflowers, pear and cherry blossoms with lots of sun and rainbows and occasional light showers. Summers are warm and sunny with very low humidity. Winter brings sporadic showers and an occasional dusting of snow. In the winter you will see snow on the surrounding mountains even when there are moderate temperatures in the lower elevations.

For more information visit <http://jacksonvilleoregon.com/>