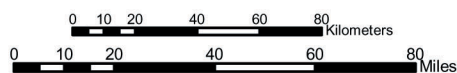
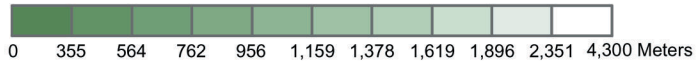


# Figure 1: Klamath Mountains Ecoregion



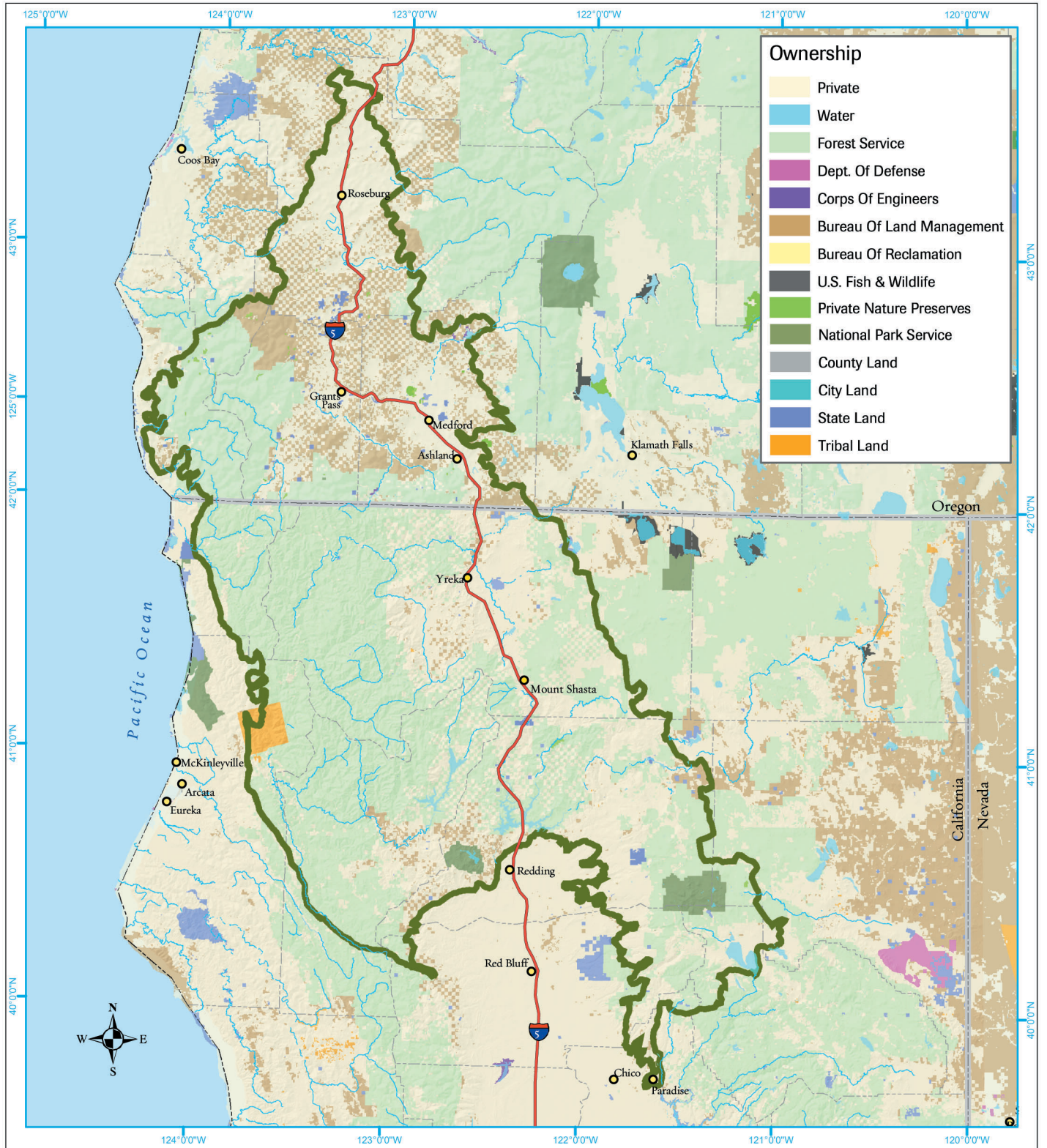
- Cities
- Rivers
- Highway
- County Boundary
- State Boundary
- Lakes
- Ecoregion Boundary
- Sections

**Elevation**



Data Source: Base data: ICBEMP, GAP, & ESRI data sets.  
Map prepared by The Nature Conservancy of Oregon, April 2003

# Figure 2: Land Ownership

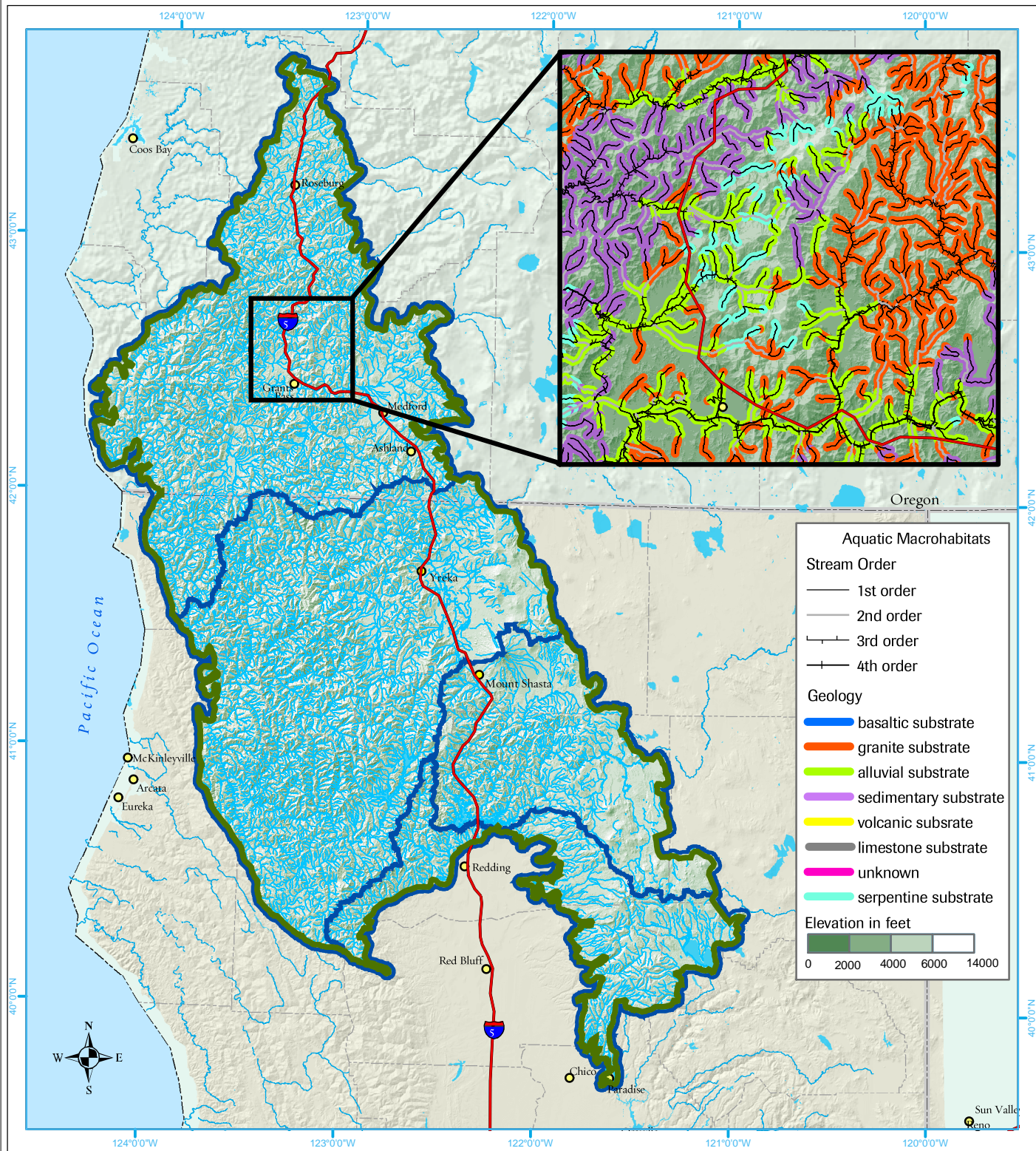


- Cities
- ~ Rivers
- Highway
- - - County Boundary
- State Boundary
- ☪ Lakes
- ▭ Ecoregion Boundary

Data Source: Base data; ICBEMP, GAP, & ESRI data sets.  
Map prepared by The Nature Conservancy of Oregon, April 2003.



# Figure 3: Aquatic Macrohabitats



**Aquatic Macrohabitats**

**Stream Order**

- 1st order
- 2nd order
- 3rd order
- 4th order

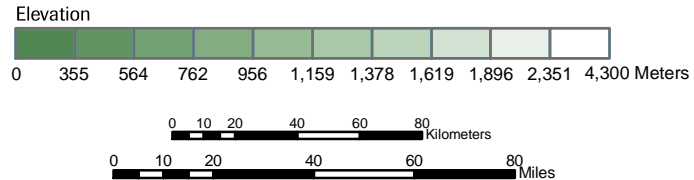
**Geology**

- basaltic substrate
- granite substrate
- alluvial substrate
- sedimentary substrate
- volcanic substrate
- limestone substrate
- unknown
- serpentine substrate

**Elevation in feet**

0 2000 4000 6000 14000

- Cities
- ~ Rivers & Creeks
- Highway
- County Boundary
- State Boundary
- ☪ Lakes
- ▭ Ecoregion Boundary
- ▭ Ecological Drainage Unit



Data Source: Base data; ICBEMP, GAP, & ESRI data sets.  
Map prepared by The Nature Conservancy of Oregon, April 2003.

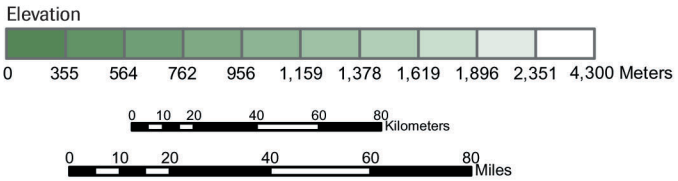
# Figure 4: Anadromous Fish Distribution



**Number of Fish Species Present**

- ~ 1
- ~ 2
- ~ 3
- ~ 4
- ~ 5

- Cities
- ~ Rivers
- Highway
- - - County Boundary
- State Boundary
- Lakes
- Ecoregion Boundary



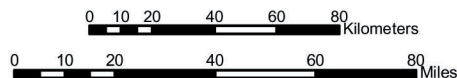
Data Source: Base data; ICBEMP, GAP, & ESRI data sets.  
Map prepared by The Nature Conservancy of Oregon, April 2003.

# Figure 5: Protected Areas



- Cities
- Rivers
- Highway
- County Boundary
- State Boundary
- Lakes
- Ecoregion Boundary

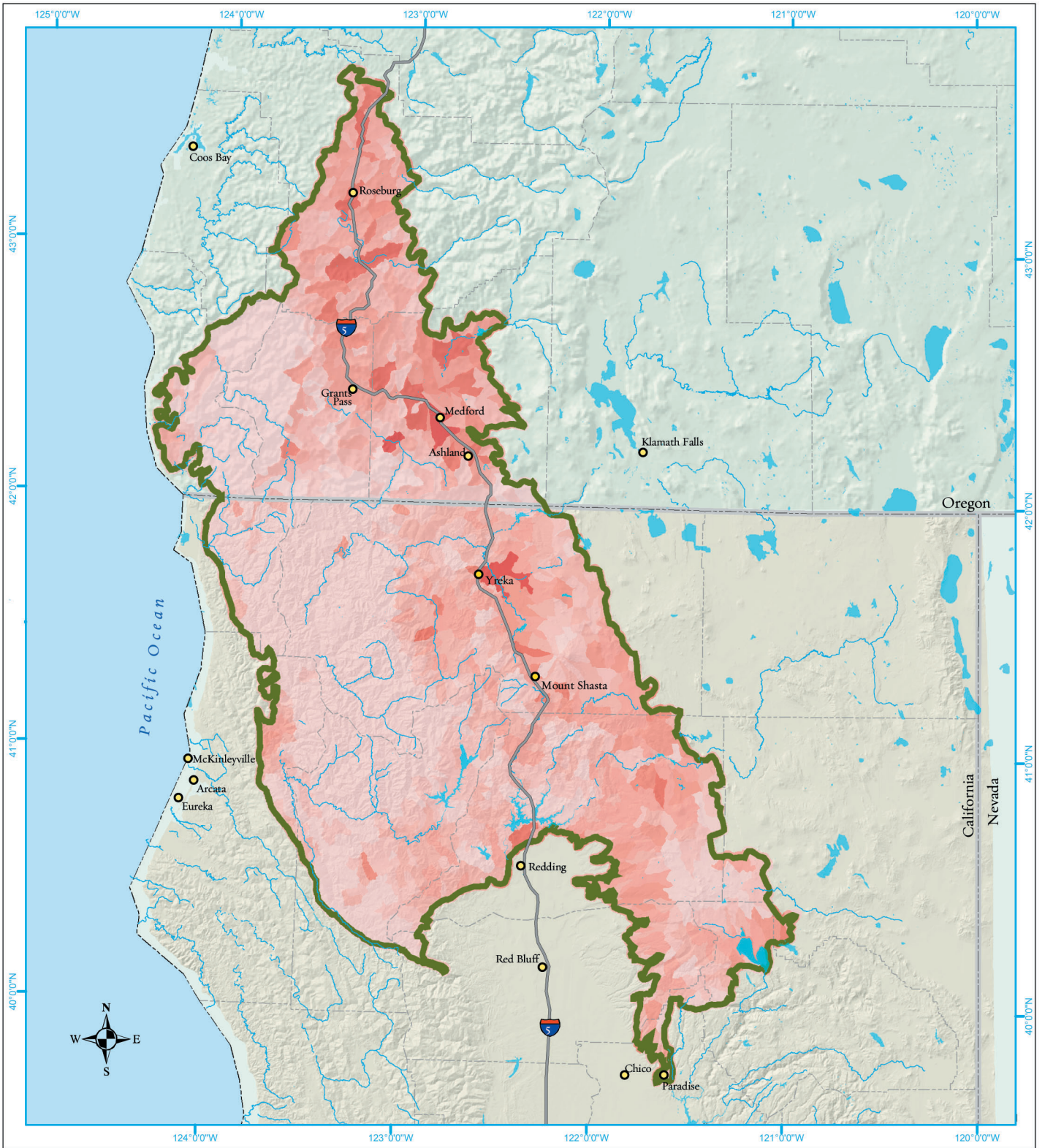
Protected Areas



Data Source: Base data; ICBEMP, GAP, & ESRI data sets.  
Map prepared by The Nature Conservancy of Oregon, April 2003.

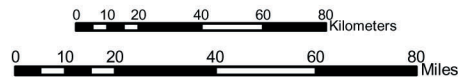


# Figure 6: Suitability Index Cost Surface



- Cities
- Rivers
- Highway
- County Boundary
- State Boundary
- Lakes
- Ecoregion Boundary

**Suitability**



Data Source: Base data: ICBEMP, GAP, & ESRI data sets.  
Map prepared by The Nature Conservancy of Oregon, April 2003

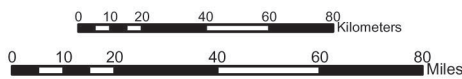


# Figure 7: Conservation Portfolio



- Cities
- Rivers
- Highway
- County Boundary
- State Boundary
- Lakes
- Ecoregion Boundary

- Aquatic Portfolio
- Terrestrial Portfolio



Data Source: Base data; ICBEMP, GAP, & ESRI data sets.  
 Map prepared by The Nature Conservancy of Oregon, April 2003.

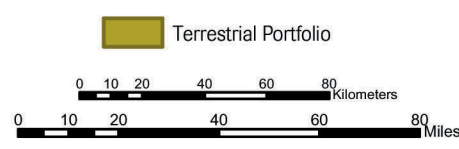


\* note: the terrestrial portfolio includes some aquatic targets

# Figure 8: Terrestrial Portfolio



- Cities
- Rivers
- Highway
- County Boundary
- State Boundary
- Lakes
- Ecoregion Boundary
- Sections

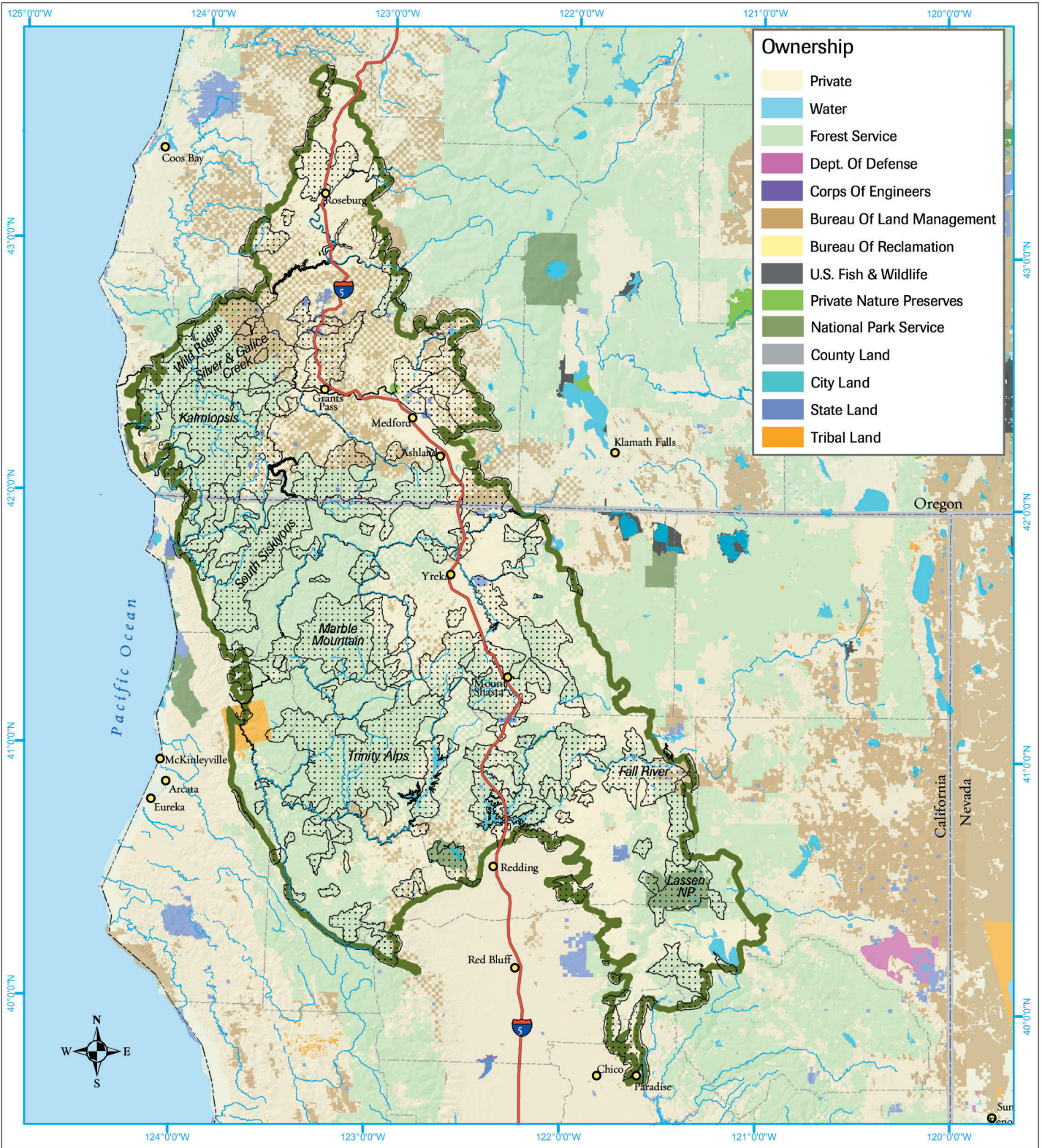


Data Source: Base data; ICBEMP, GAP, & ESRI data sets.  
Map prepared by The Nature Conservancy of Oregon, April 2003

\* note: the terrestrial portfolio includes some aquatic targets



# Figure 9: Portfolio Ownership

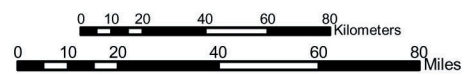


**Ownership**

- Private
- Water
- Forest Service
- Dept. Of Defense
- Corps Of Engineers
- Bureau Of Land Management
- Bureau Of Reclamation
- U.S. Fish & Wildlife
- Private Nature Preserves
- National Park Service
- County Land
- City Land
- State Land
- Tribal Land

- Cities
- Rivers
- Highway
- County Boundary
- State Boundary
- Lakes
- Ecoregion Boundary

Portfolio Sites



Data Source: Base data; ICBEMP, GAP, & ESRI data sets.  
Map prepared by The Nature Conservancy of Oregon, April 2003.

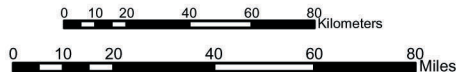


# Figure 10: Aquatic Portfolio



- Cities
- Rivers
- Highway
- County Boundary
- State Boundary
- Lakes
- Ecoregion Boundary

- Aquatic Portfolio
- Ecological Drainage Unit

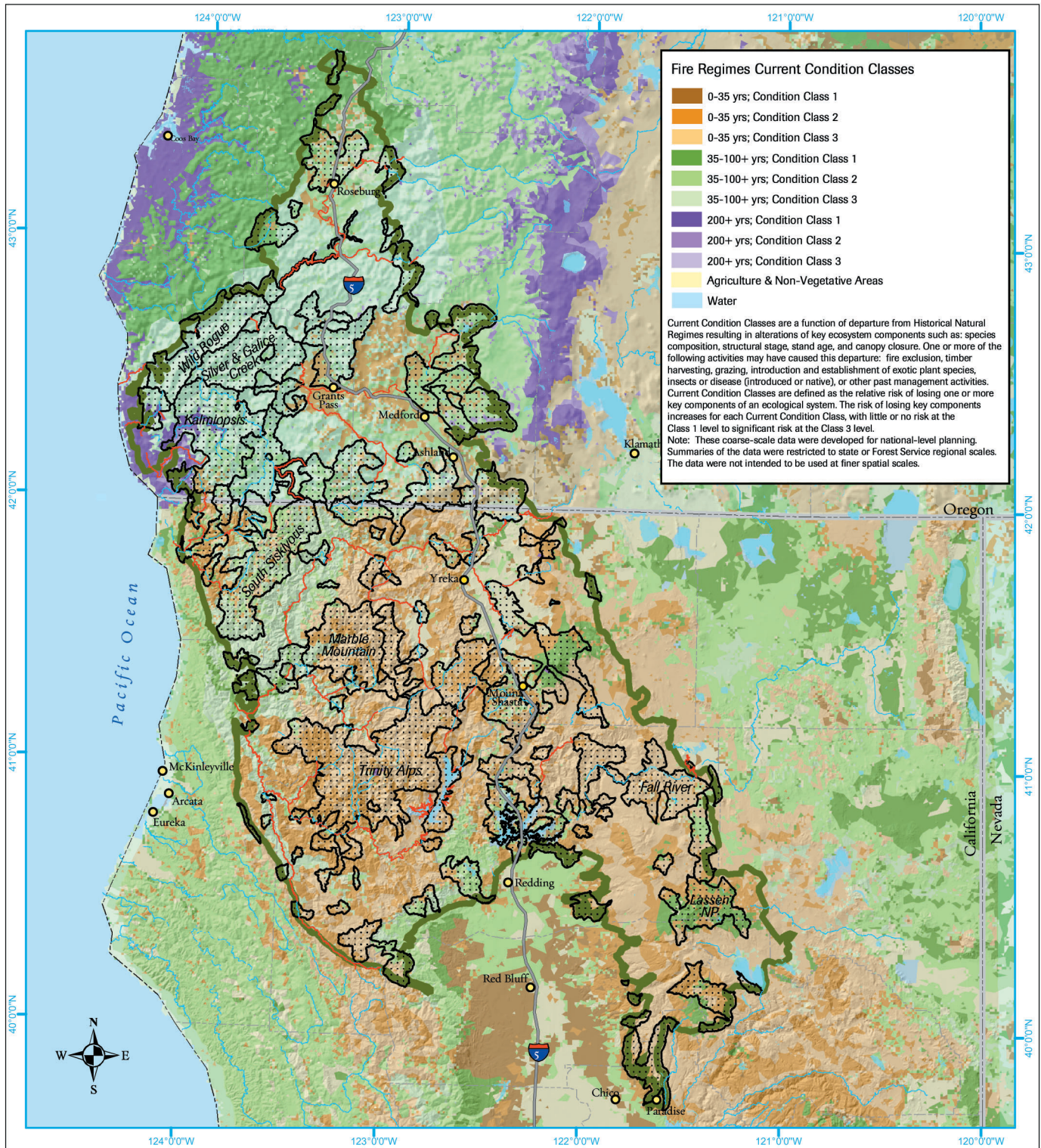


Data Source: Base data; ICBEMP, GAP, & ESRI data sets.  
 Map prepared by The Nature Conservancy of Oregon, April 2003.



\* note: the terrestrial portfolio includes additional aquatic targets

# Figure 11: Fire Regimes Condition Class



**Fire Regimes Current Condition Classes**

- 0-35 yrs; Condition Class 1
- 0-35 yrs; Condition Class 2
- 0-35 yrs; Condition Class 3
- 35-100+ yrs; Condition Class 1
- 35-100+ yrs; Condition Class 2
- 35-100+ yrs; Condition Class 3
- 200+ yrs; Condition Class 1
- 200+ yrs; Condition Class 2
- 200+ yrs; Condition Class 3
- Agriculture & Non-Vegetative Areas
- Water

Current Condition Classes are a function of departure from Historical Natural Regimes resulting in alterations of key ecosystem components such as: species composition, structural stage, stand age, and canopy closure. One or more of the following activities may have caused this departure: fire exclusion, timber harvesting, grazing, introduction and establishment of exotic plant species, insects or disease (introduced or native), or other past management activities. Current Condition Classes are defined as the relative risk of losing one or more key components of an ecological system. The risk of losing key components increases for each Current Condition Class, with little or no risk at the Class 1 level to significant risk at the Class 3 level.  
 Note: These coarse-scale data were developed for national-level planning. Summaries of the data were restricted to state or Forest Service regional scales. The data were not intended to be used at finer spatial scales.

- Cities
- ~ Rivers
- Highway
- - - County Boundary
- State Boundary
- ☪ Lakes
- ▭ Ecoregion Boundary

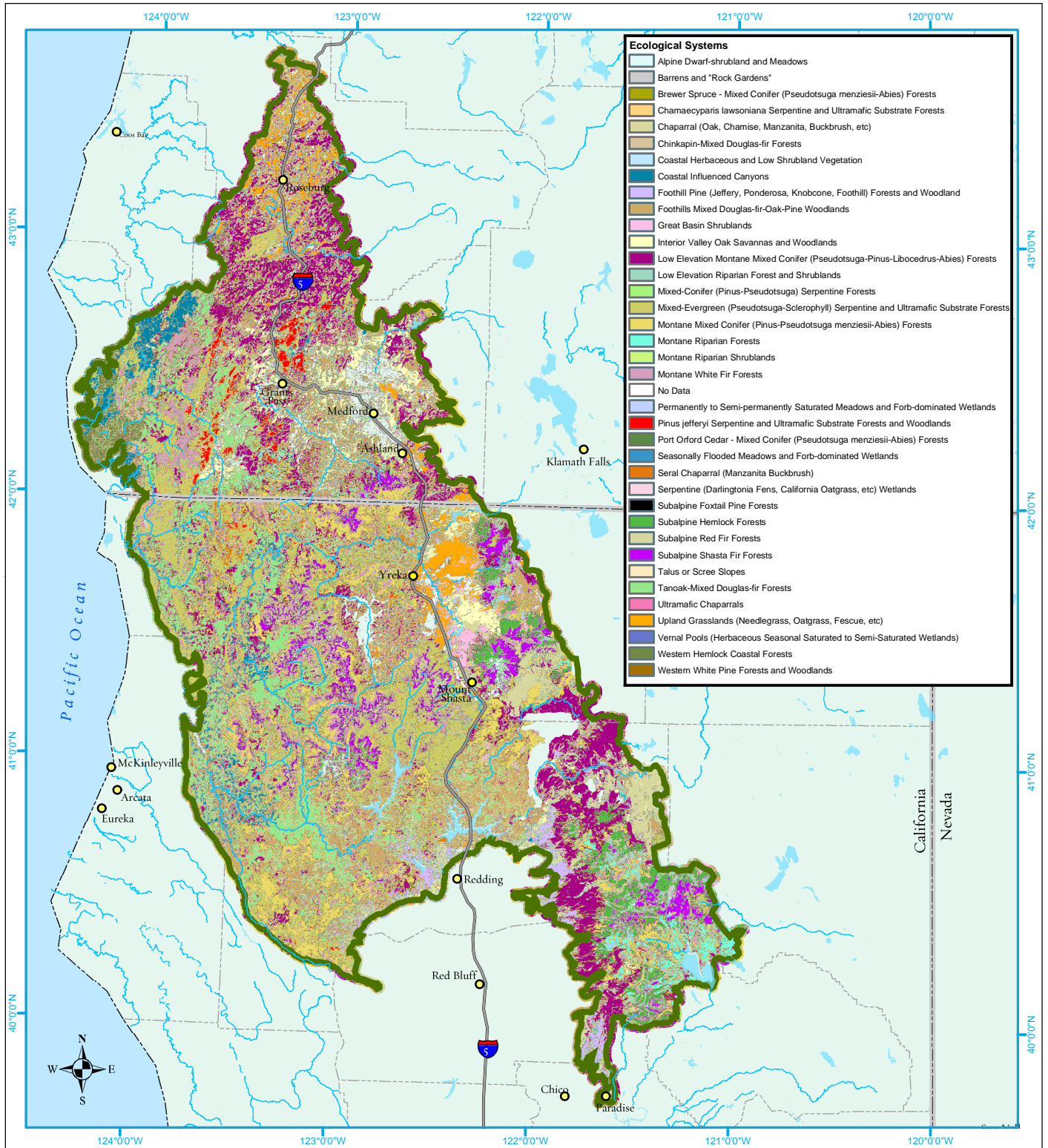
- ▨ Terrestrial Portfolio
- ~ Aquatic Portfolio

0 10 20 40 60 80 Kilometers  
 0 10 20 40 60 80 Miles

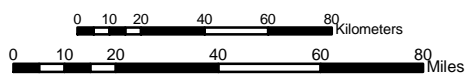


Data Source: Base Data: ICBEMP, GAP, ESRI, & TNC data sets. The Fire Regimes Current Condition Class data is coarse scale data produced by the Fire Sciences Laboratory, Rocky Mountain Research Station, Version 2000.  
 Map prepared by The Nature Conservancy of Oregon, May 2003.

# Figure 12: Terrestrial Ecological Systems



- Cities
- ~ Rivers
- Highway
- - - County Boundary
- State Boundary
- ☪ Lakes
- ▭ Ecoregion Boundary



Data Source: Base Data: ICBEMP, GAP, ESRI, & TNC data sets.  
Map prepared by The Nature Conservancy of Oregon, May 2003.

