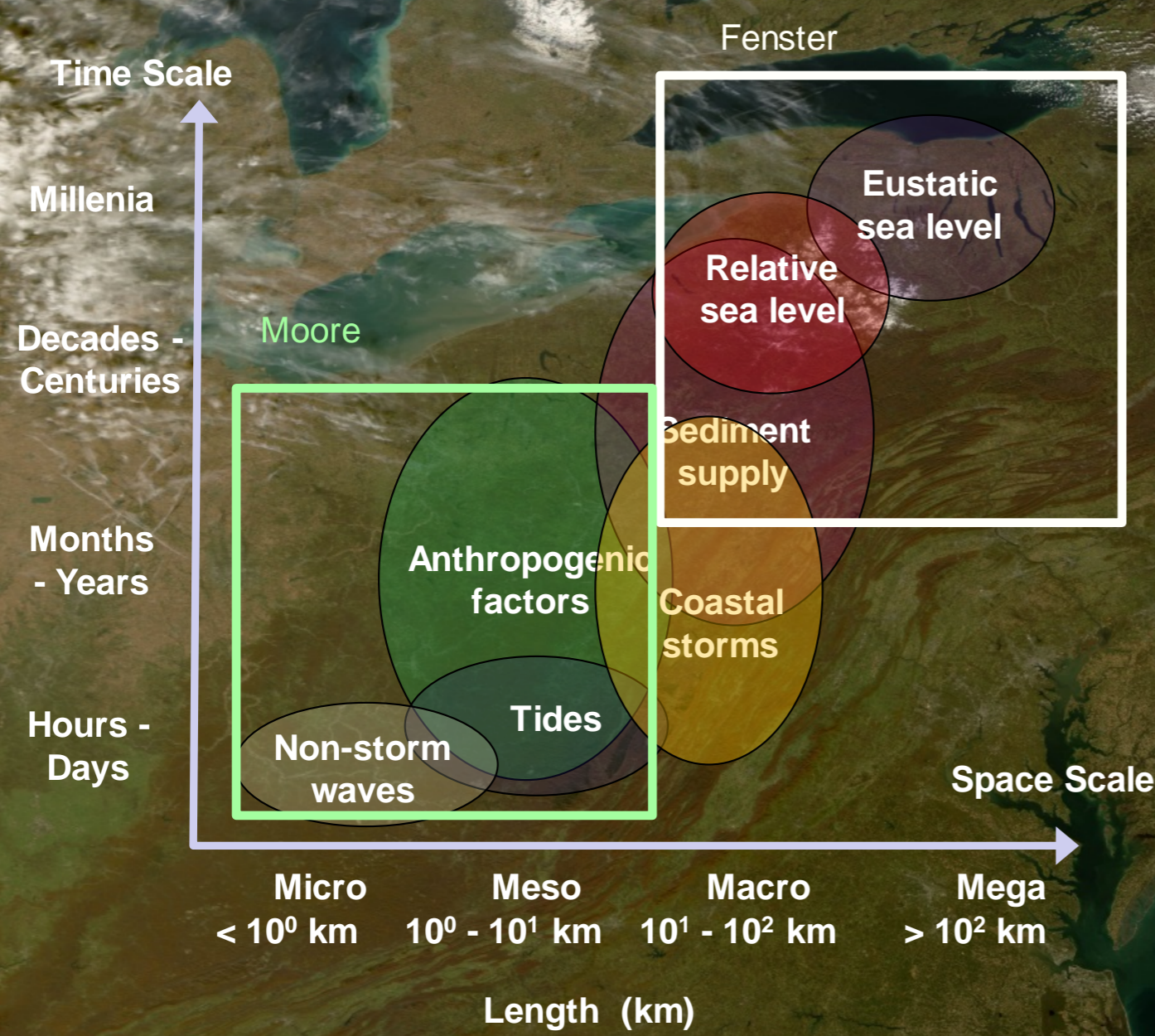


# Evolution of the Delmarva Coast



Michael Fenster  
Randolph-Macon College

*Barrier Island-Inlet Modeling Team  
with Laura Moore, Brad Murray, Dylan McNamara*



**Things change....**

# Things change....



# Things change....



# Things change....



# Things change....



# Things change....



# How do we know things change?

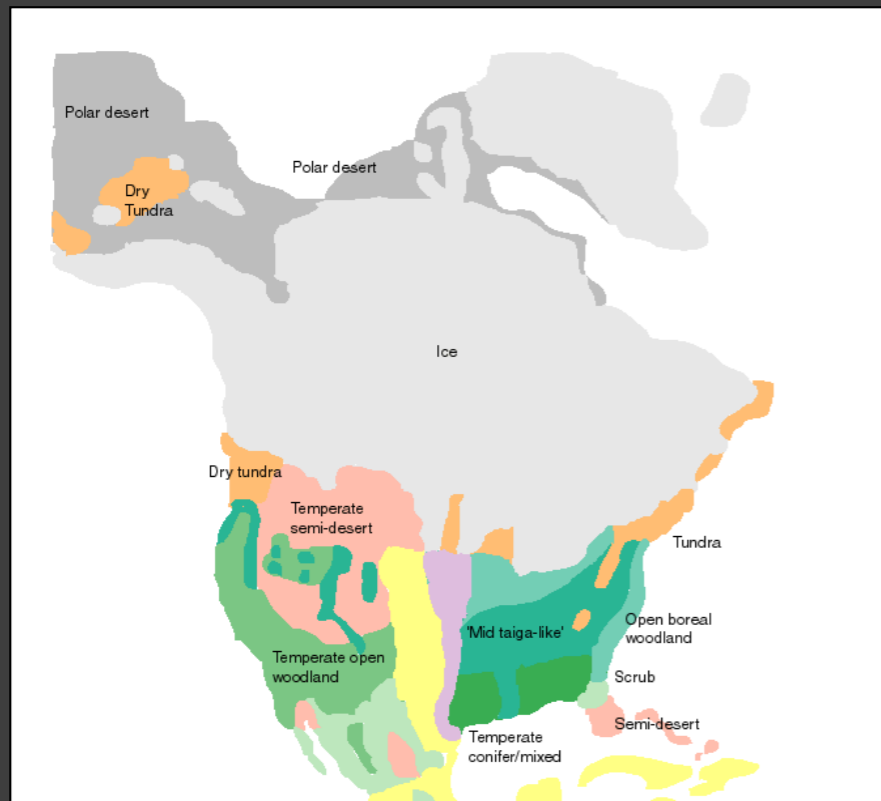


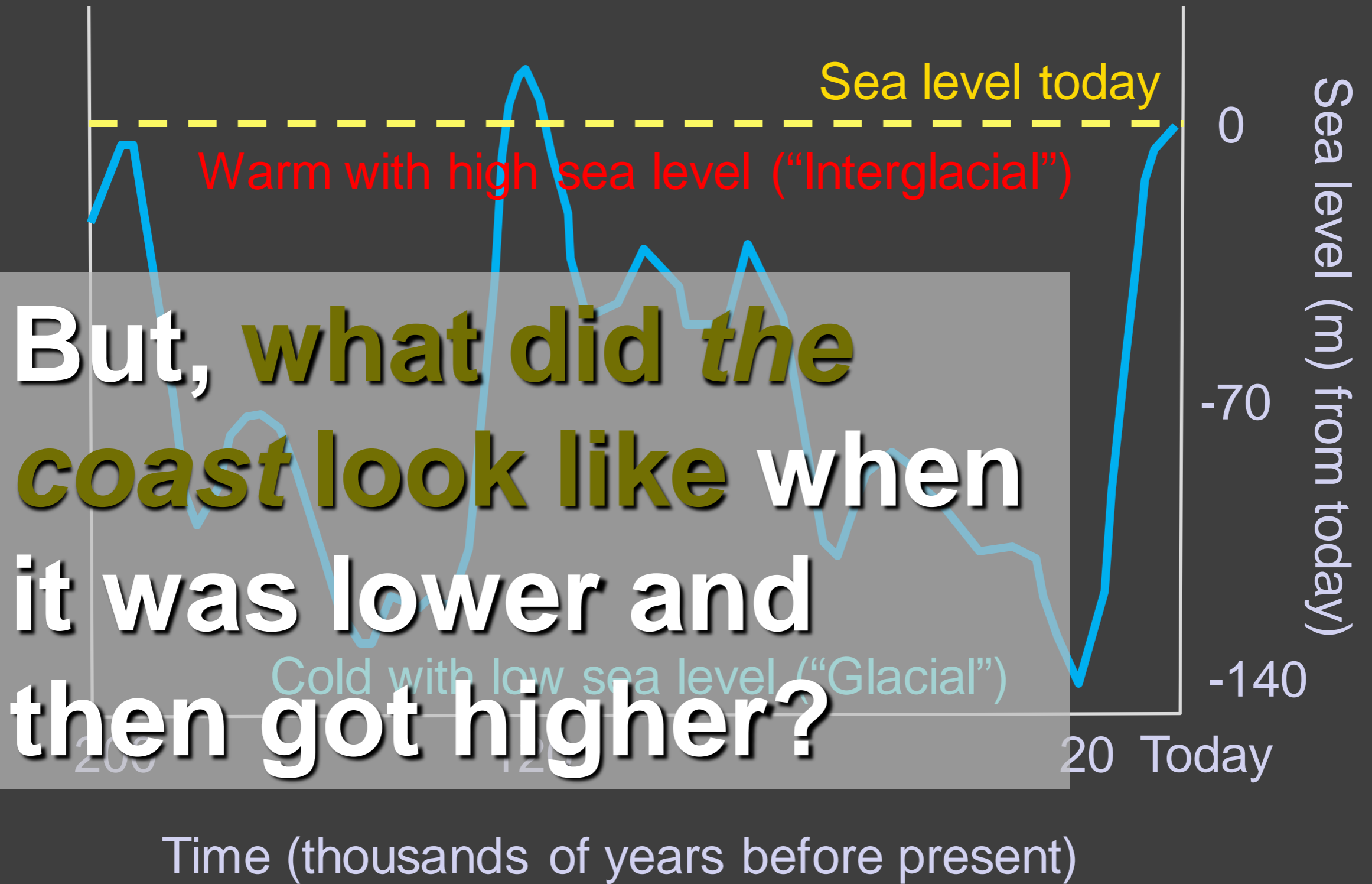


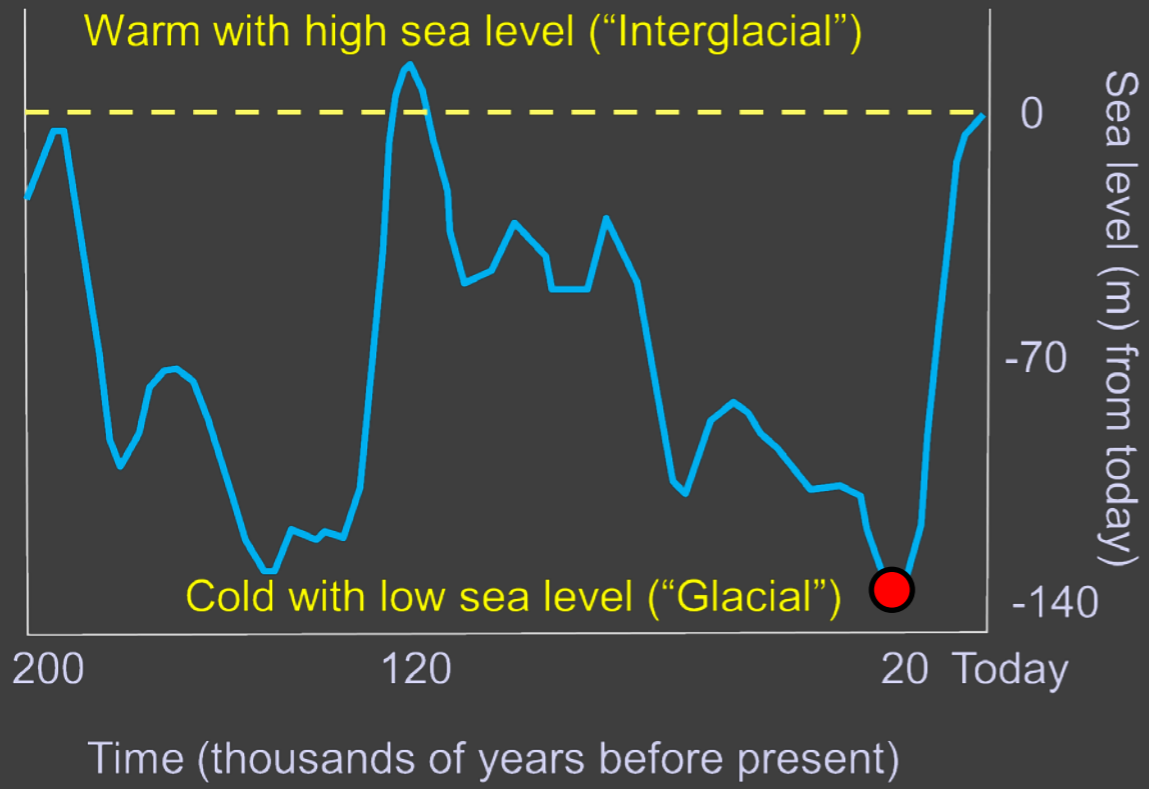
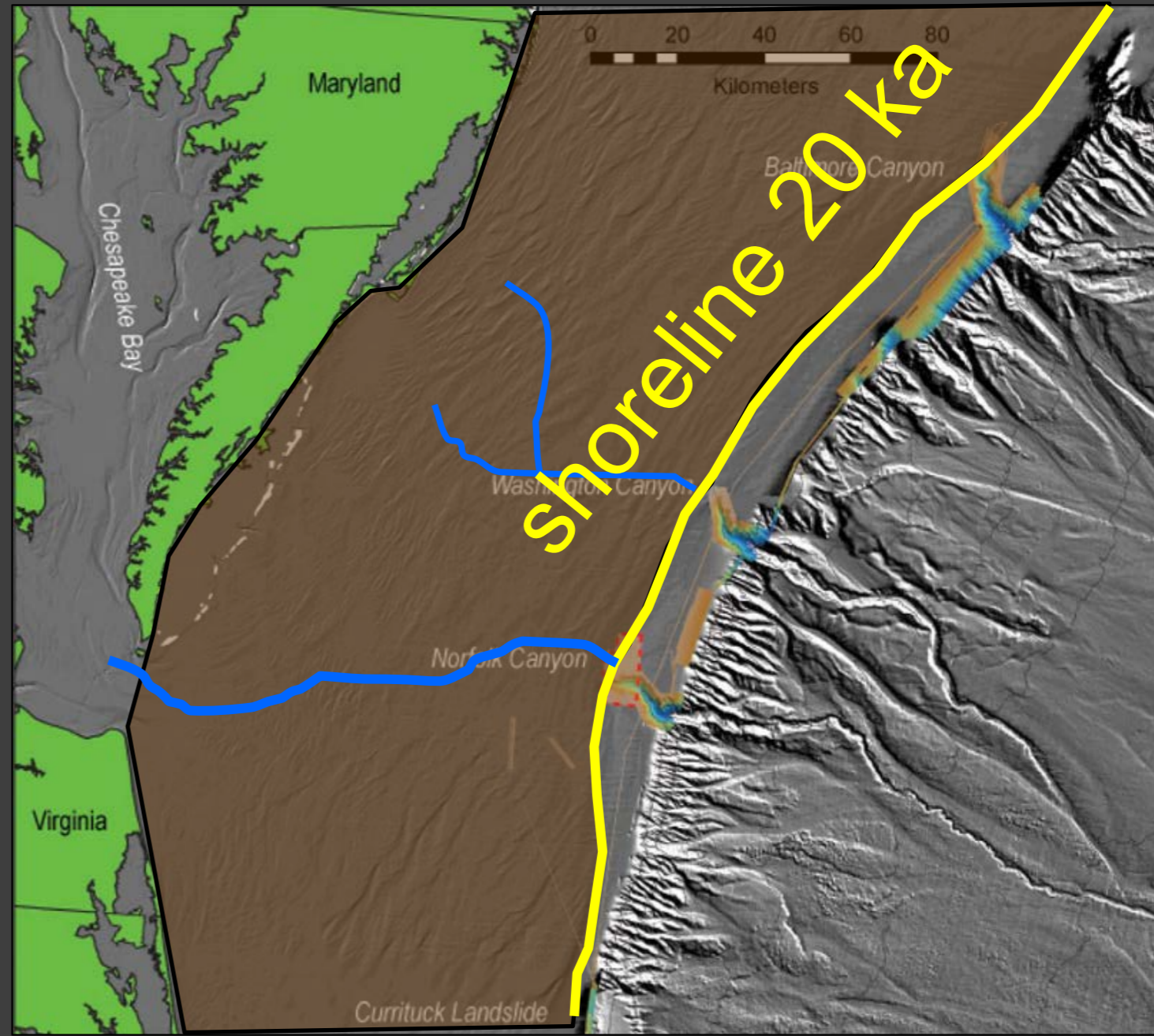
# The World 20,000 years ago... (before TNC)



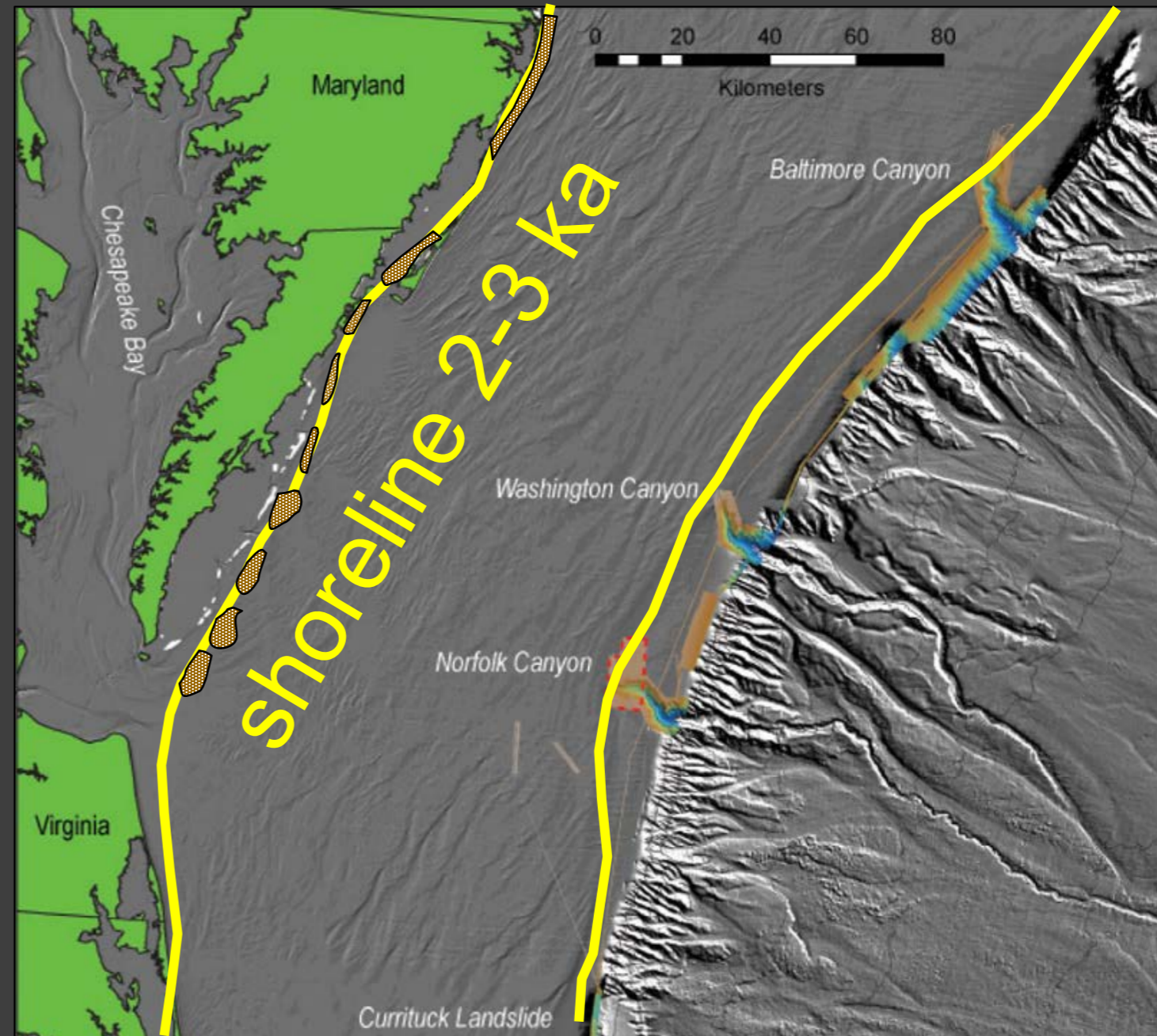
But, what about sea level?



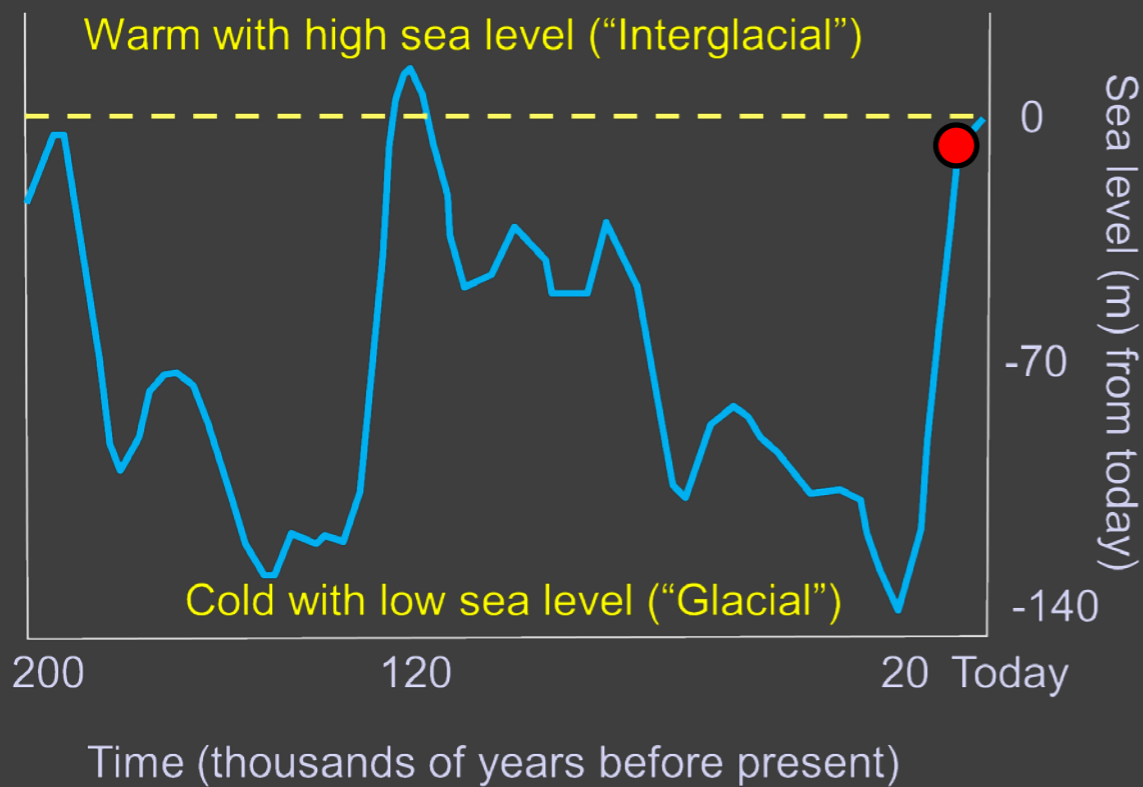




# But, why did the islands form then?

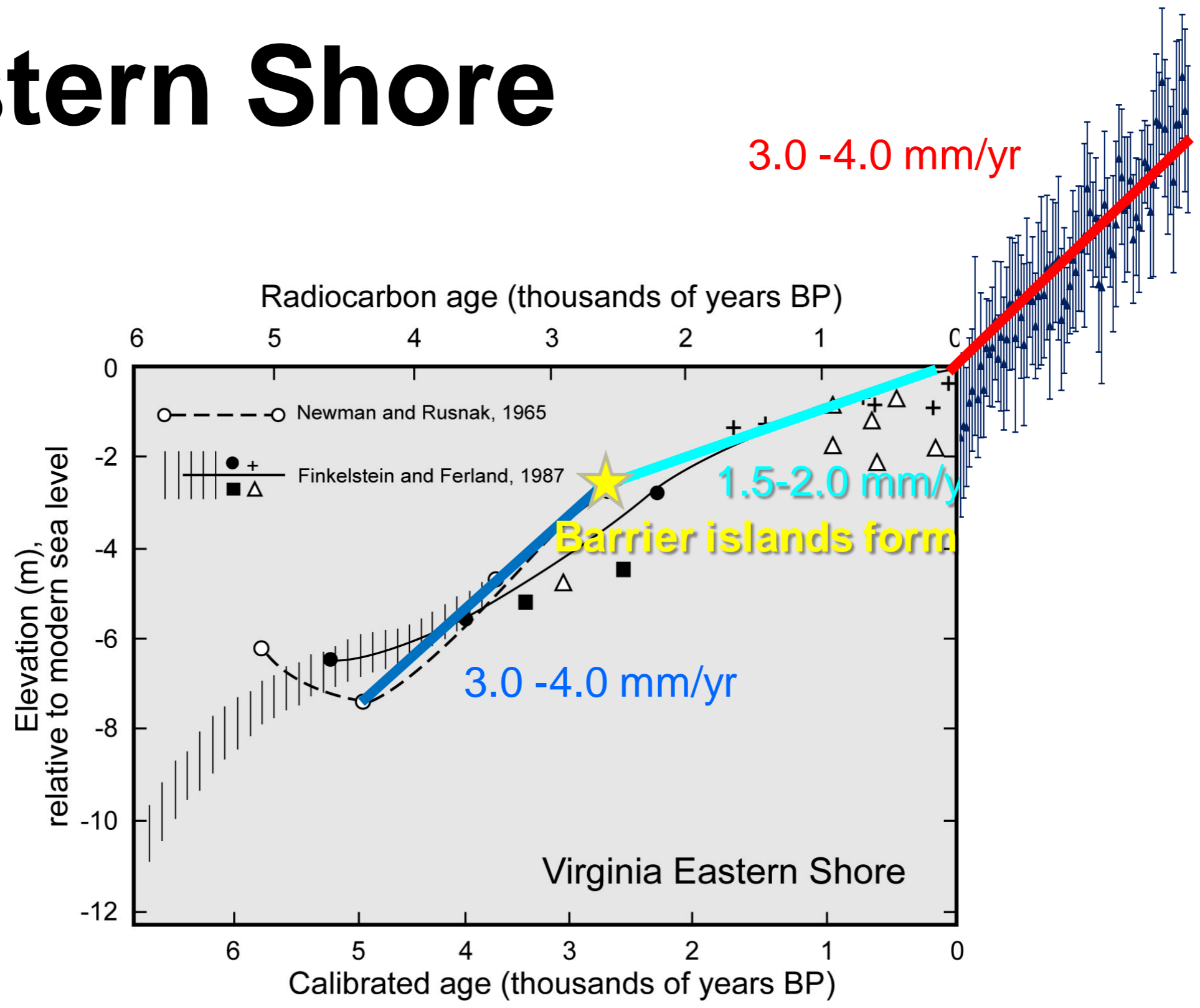


island sizes not to scale



# Sea level on the Eastern Shore

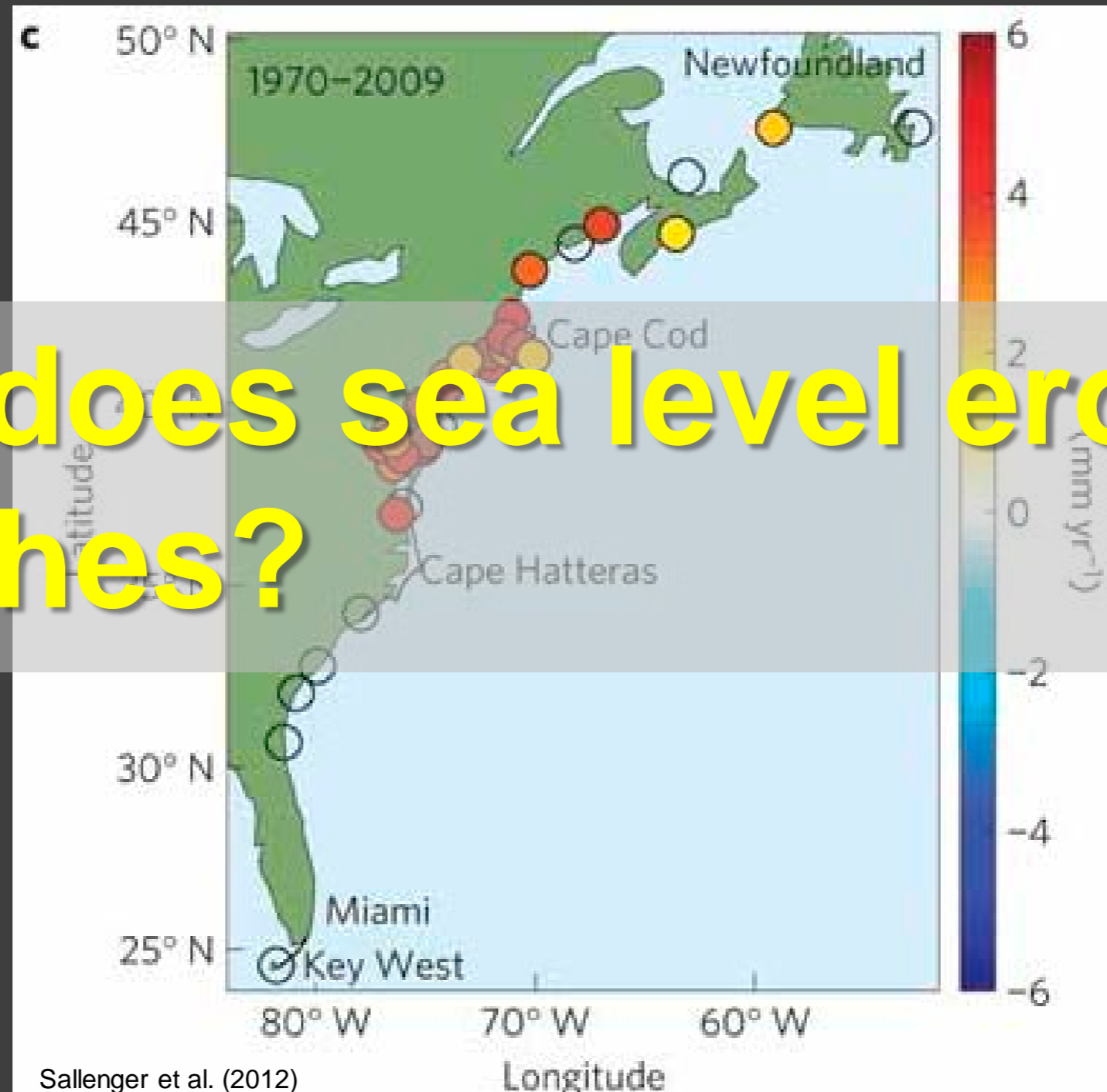
1925-2010



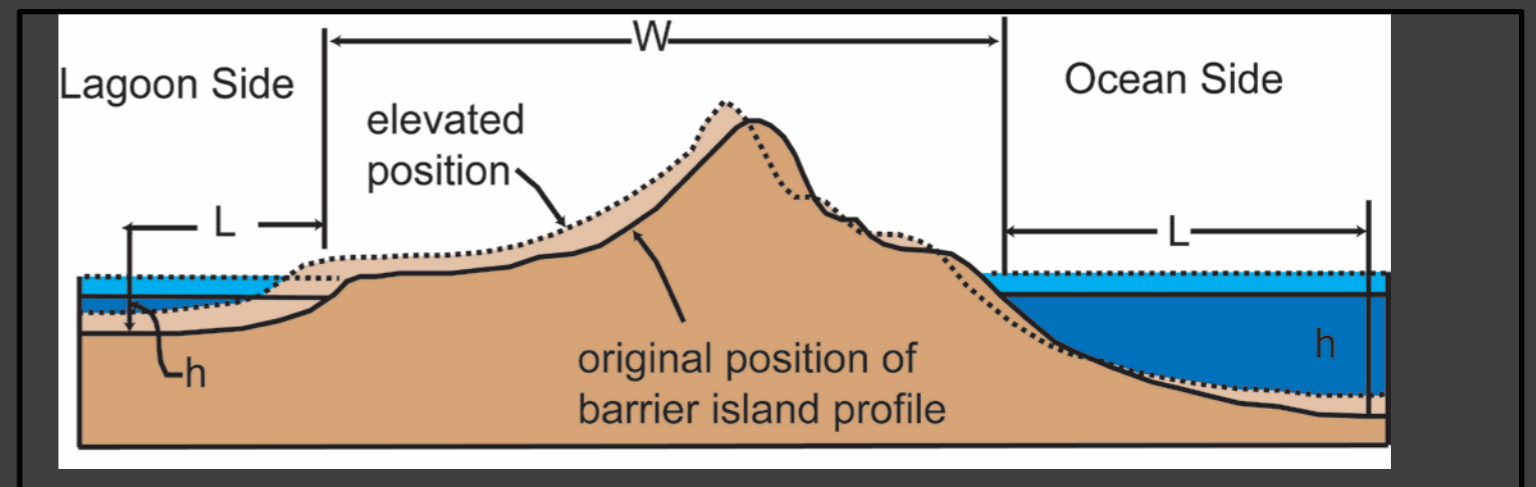
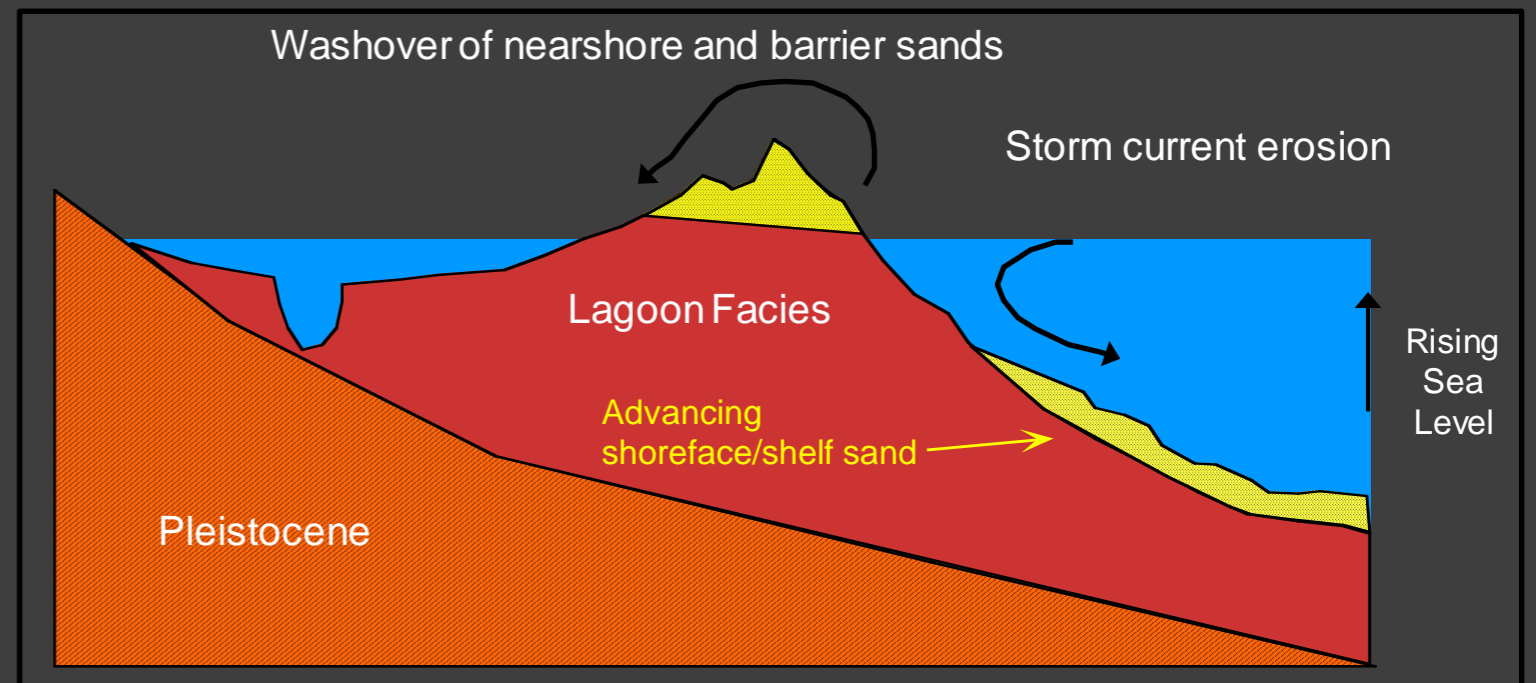
modified from Van de Plassche (1990)

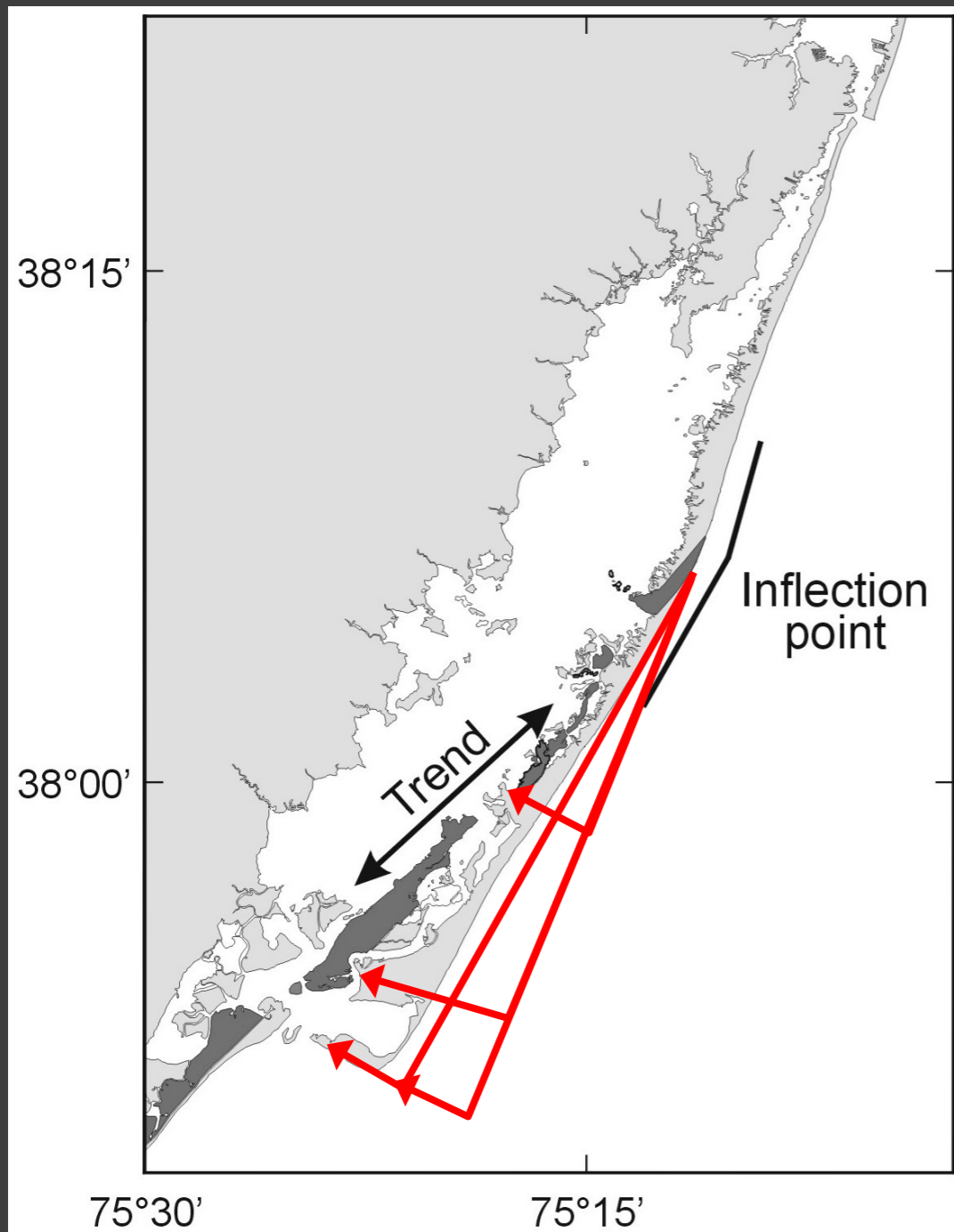
# And... we're on a "hot spot"

But, does sea level erode beaches?

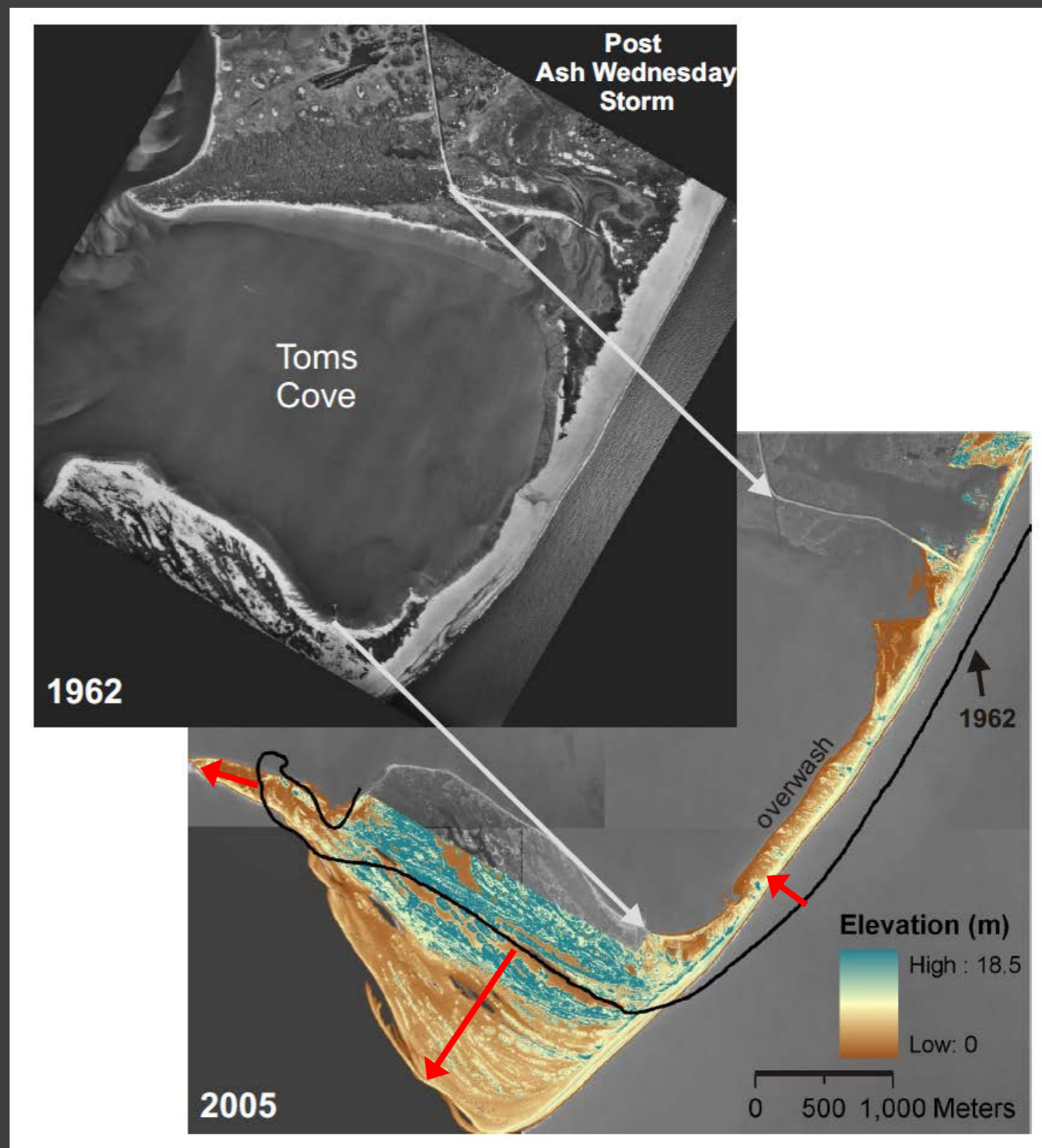
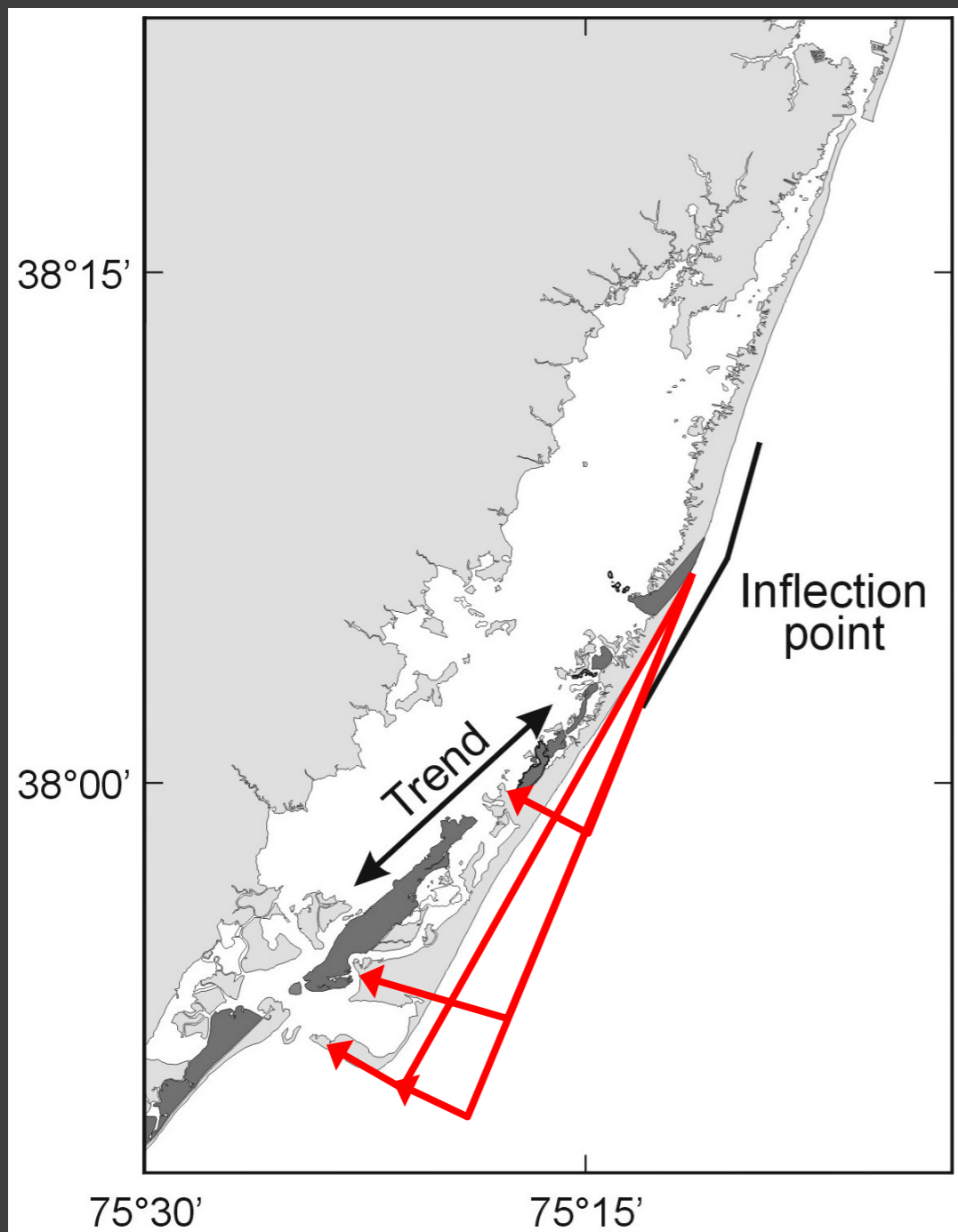


# The Work of Storms: Shoreface Retreat

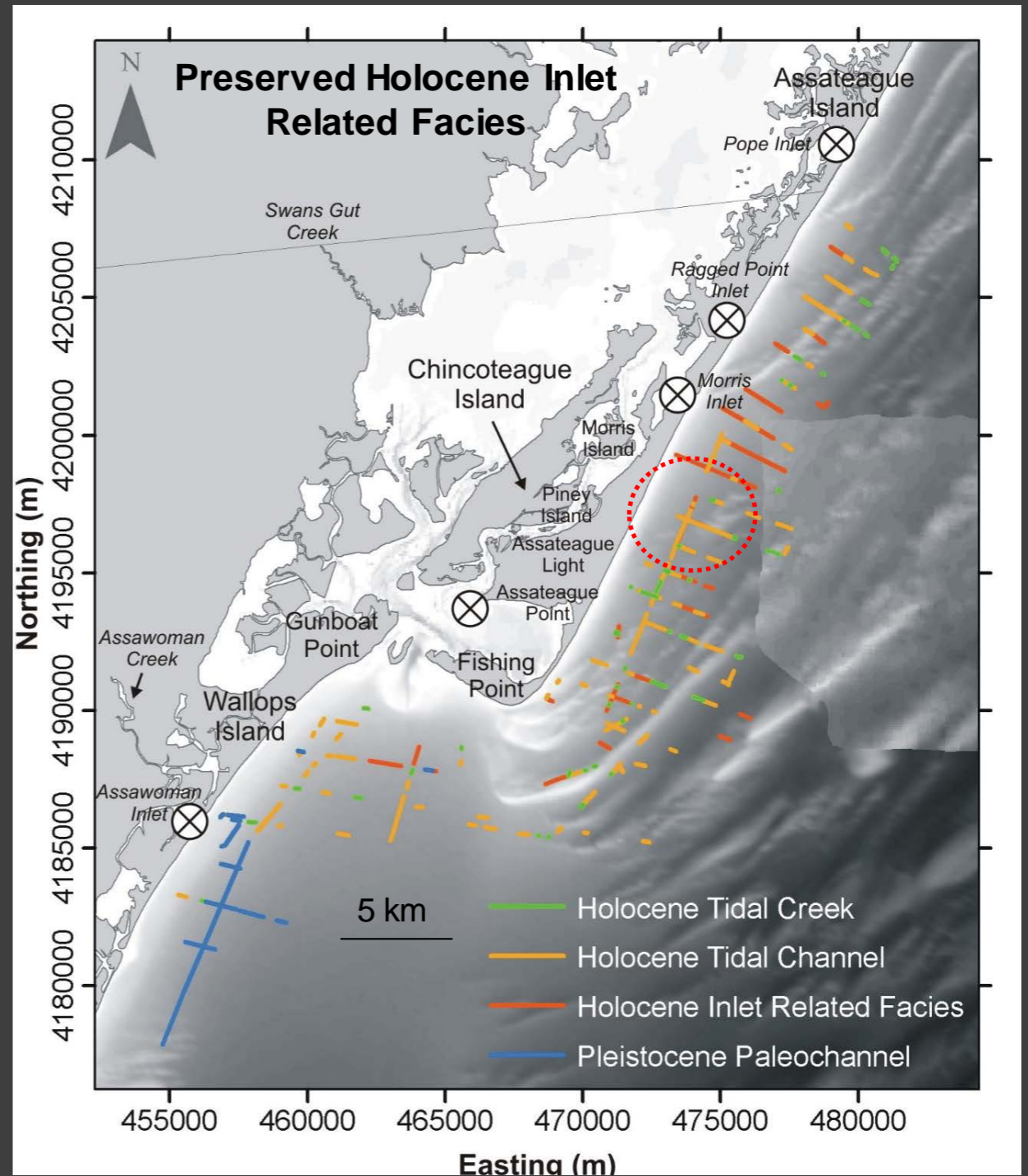
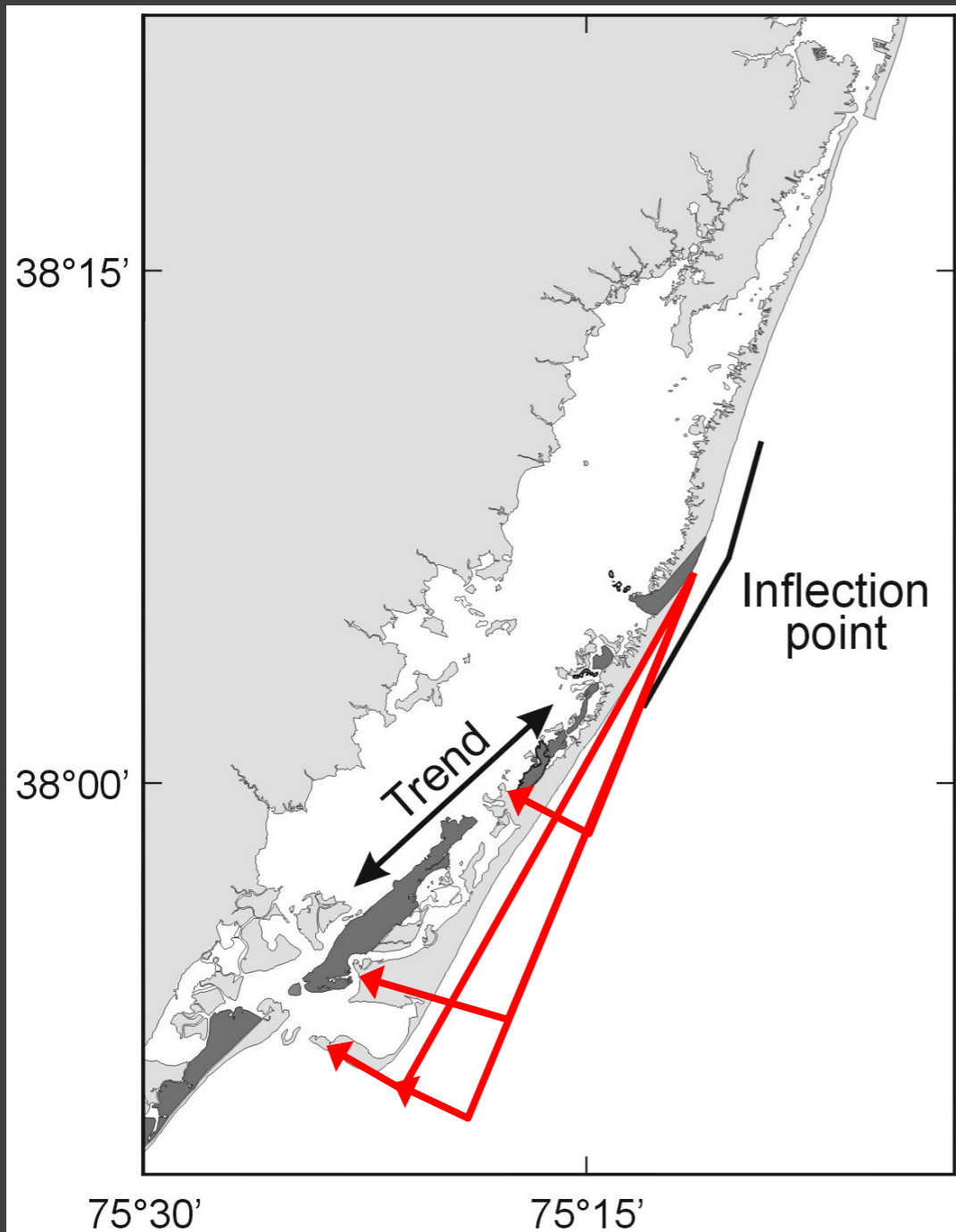




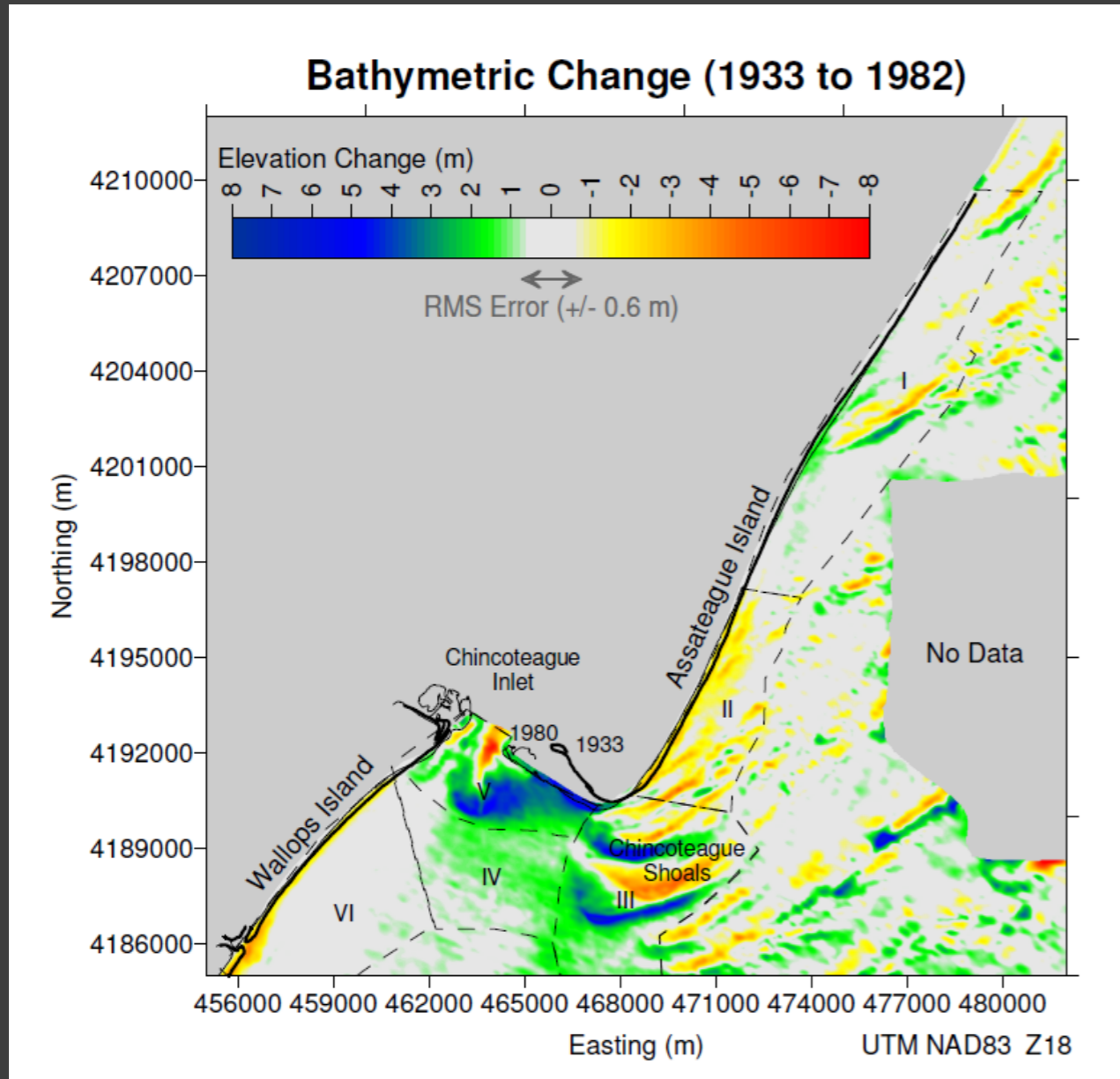




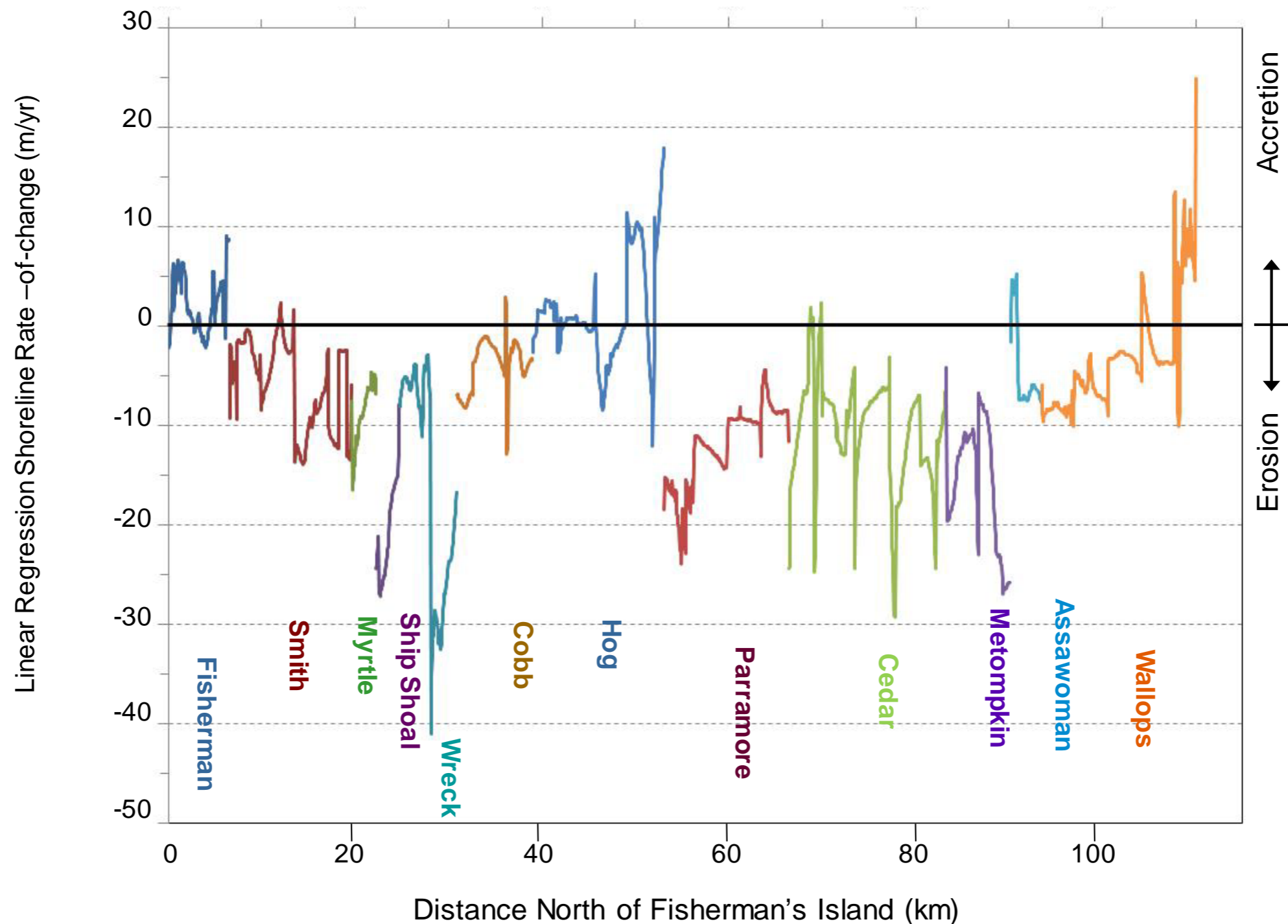
# Things change.....



# Sediment Supply and Sediment Migration Pathways



# Things change... like shoreline locations



An aerial photograph of a coastal wetland area. A river flows through the center, surrounded by marshes and other land features. The water is a deep blue, and the land is a mix of brown and green. The overall scene is a natural, somewhat desolate landscape.

**Things change....**

**Here to tell you why...**

**Dr. Laura Moore**



# Coastline shape is there for a reason...

