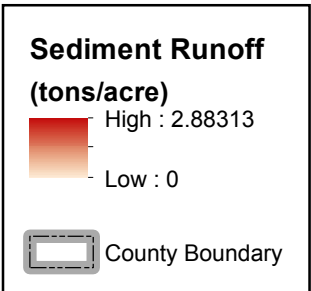
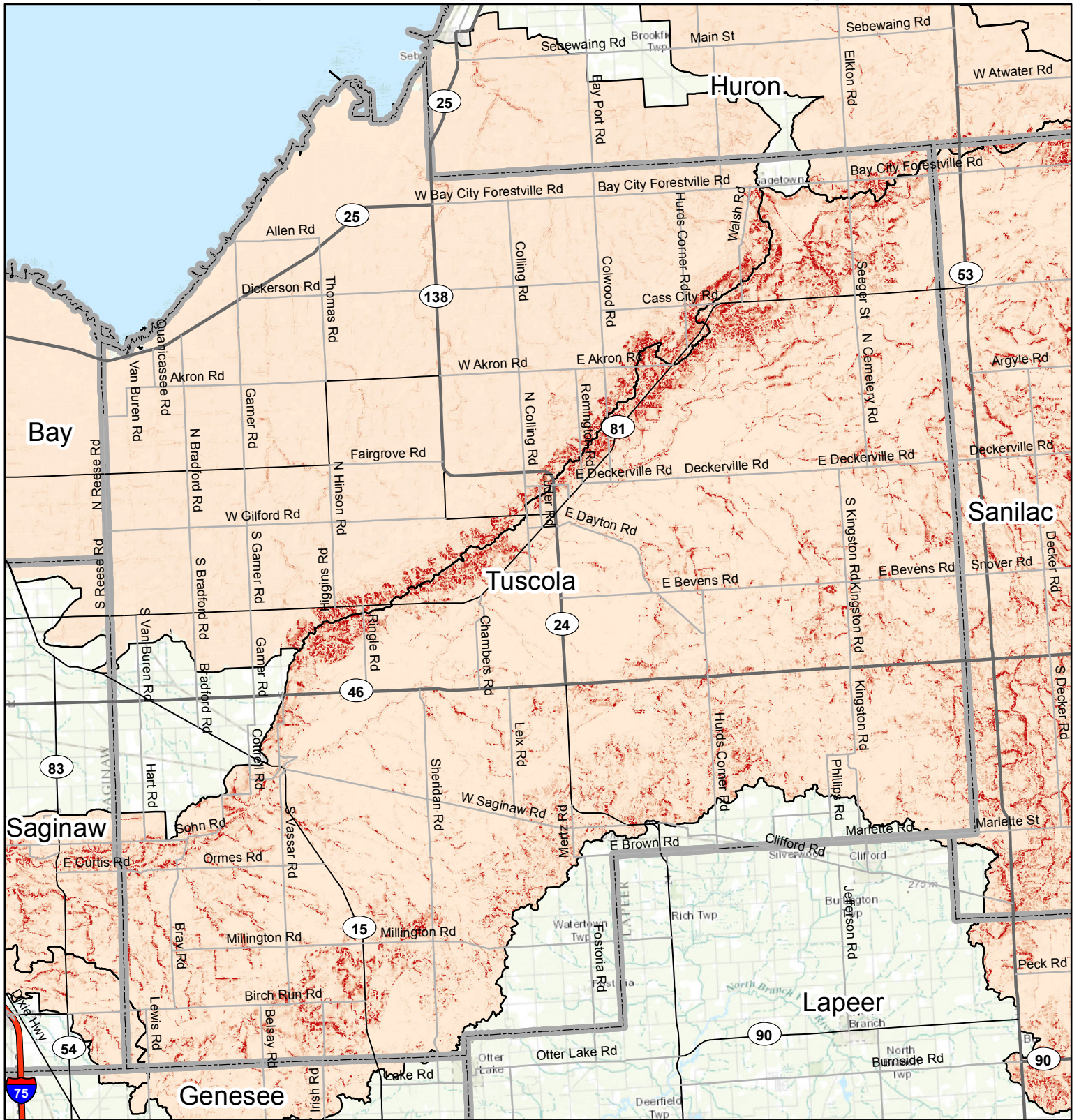


Sediment Runoff in RCPP Eligible Watersheds (Indicated by pink shaded areas)

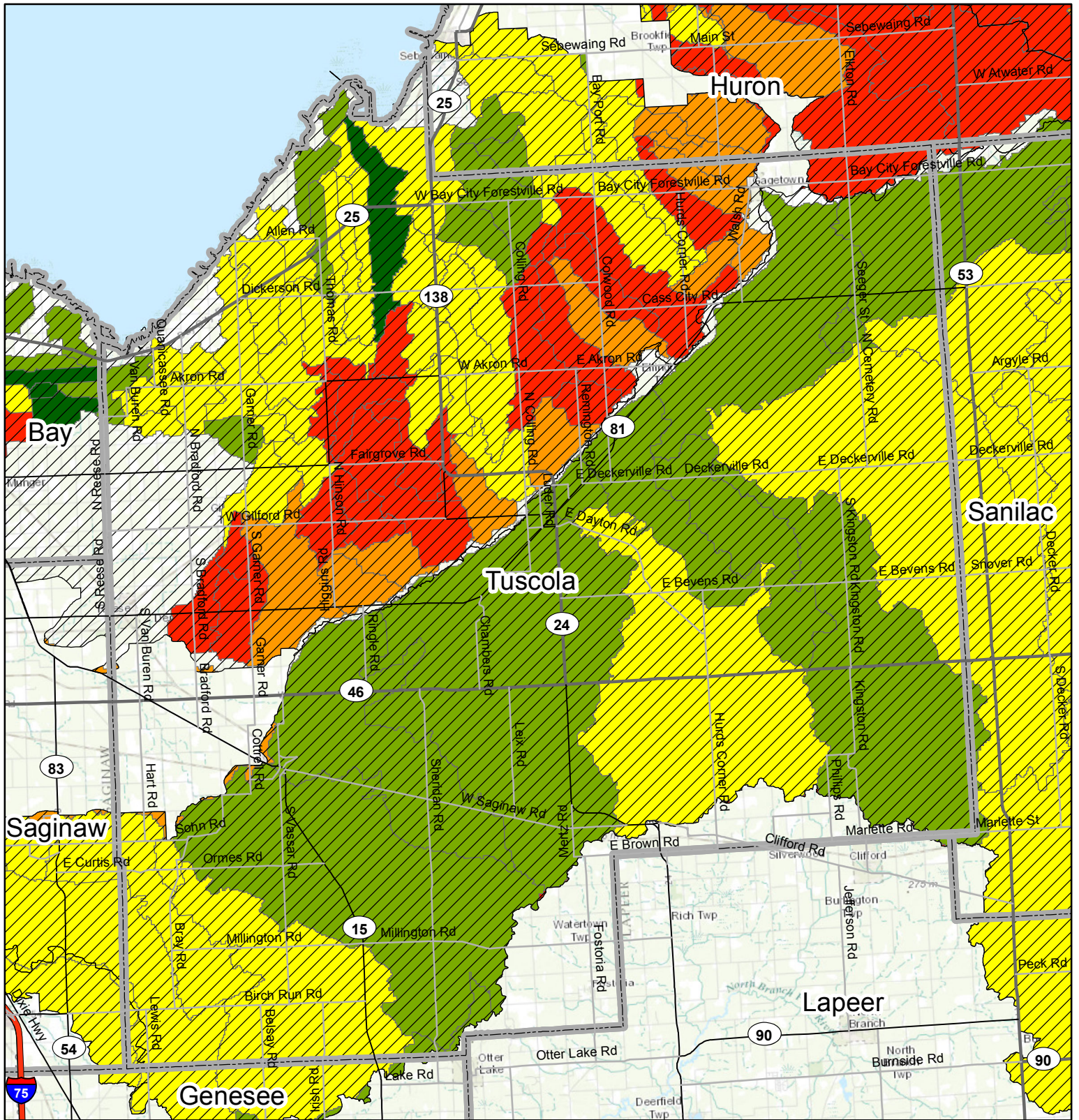


Tuscola County



Service Layer Credits: Sources: Esri, DeLorme, NAVTEQ, TomTom, Intermap, increment P Corp., GEBCO, USGS, FAO, NPS, NRCAN, GeoBase, IGN, Kadaster NL, Ordnance Survey, Esri Japan, METI, Esri China (Hong Kong), swisstopo, and the GIS User Community

Predicted Water Quality in RCPP Eligible Watersheds



Tuscola County

Predicted Water Quality

- Not Limited
- Slightly Limited
- Moderately Limited
- Severely Limited
- Very Limited
- RCPP Eligible Watersheds
- County Boundary



Service Layer Credits: Sources: Esri, DeLorme, NAVTEQ, TomTom, Intermap, increment P Corp., GEBCO, USGS, FAO, NPS, NRCAN, GeoBase, IGN, Kadaster NL, Ordnance Survey, Esri Japan, METI, Esri China (Hong Kong), swisstopo, and the GIS User Community