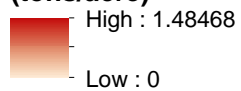


# Sediment Runoff in RCPP Eligible Watersheds (Indicated by pink shaded areas)

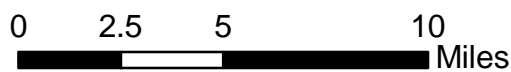


## Sediment Runoff (tons/acre)



County Boundary

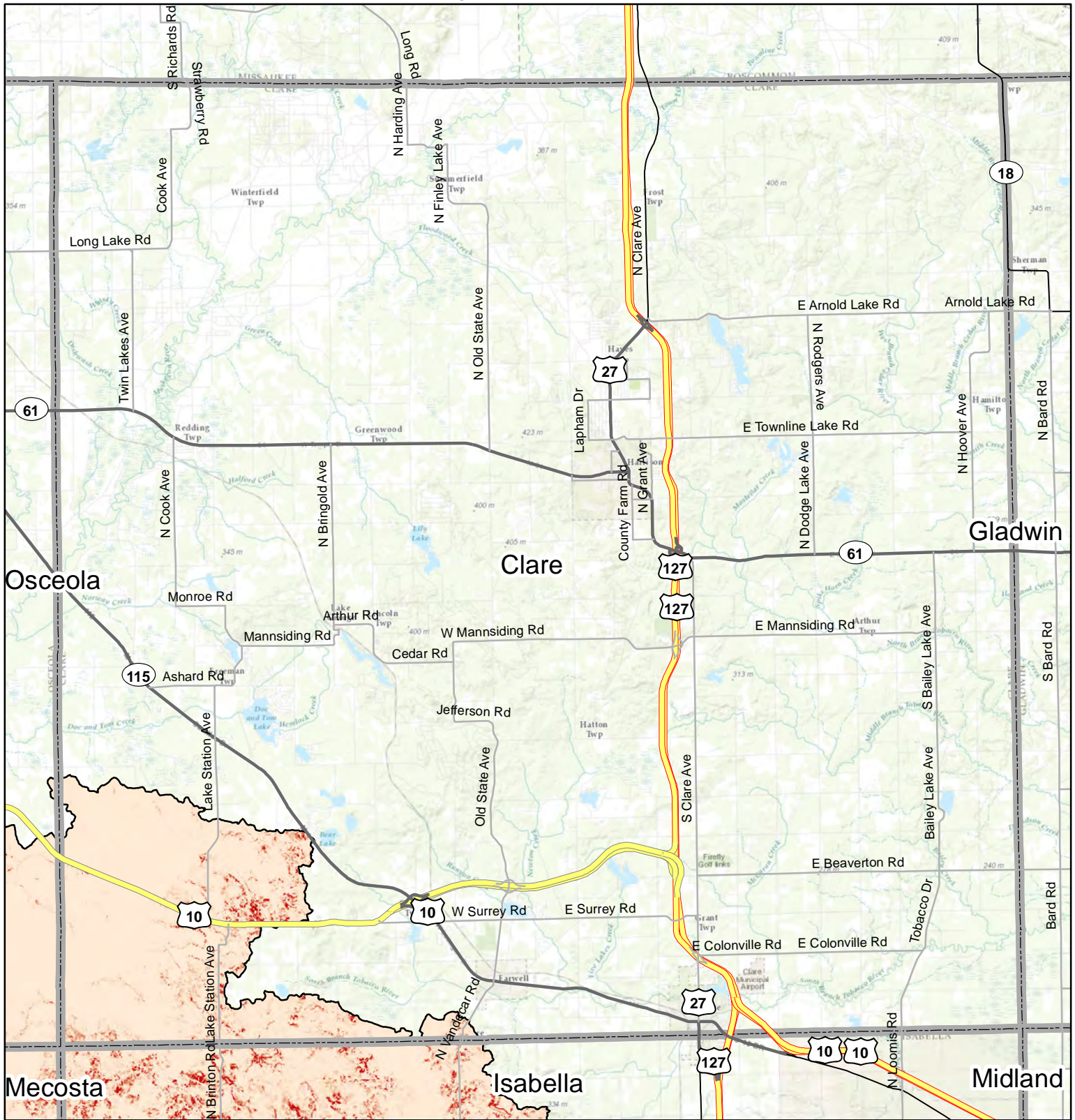
## Bay County



Service Layer Credits: Sources: Esri, DeLorme, NAVTEQ, TomTom, Intermap, increment P Corp., GEBCO, USGS, FAO, NPS, NRCAN, GeoBase, IGN, Kadaster NL, Ordnance Survey, Esri Japan, METI, Esri China (Hong Kong), swisstopo, and the GIS User Community



# Sediment Runoff in RCPP Eligible Watersheds (Indicated by pink shaded areas)



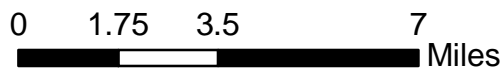
**Sediment Runoff**  
(tons/acre)

High : 0.542781

Low : 0

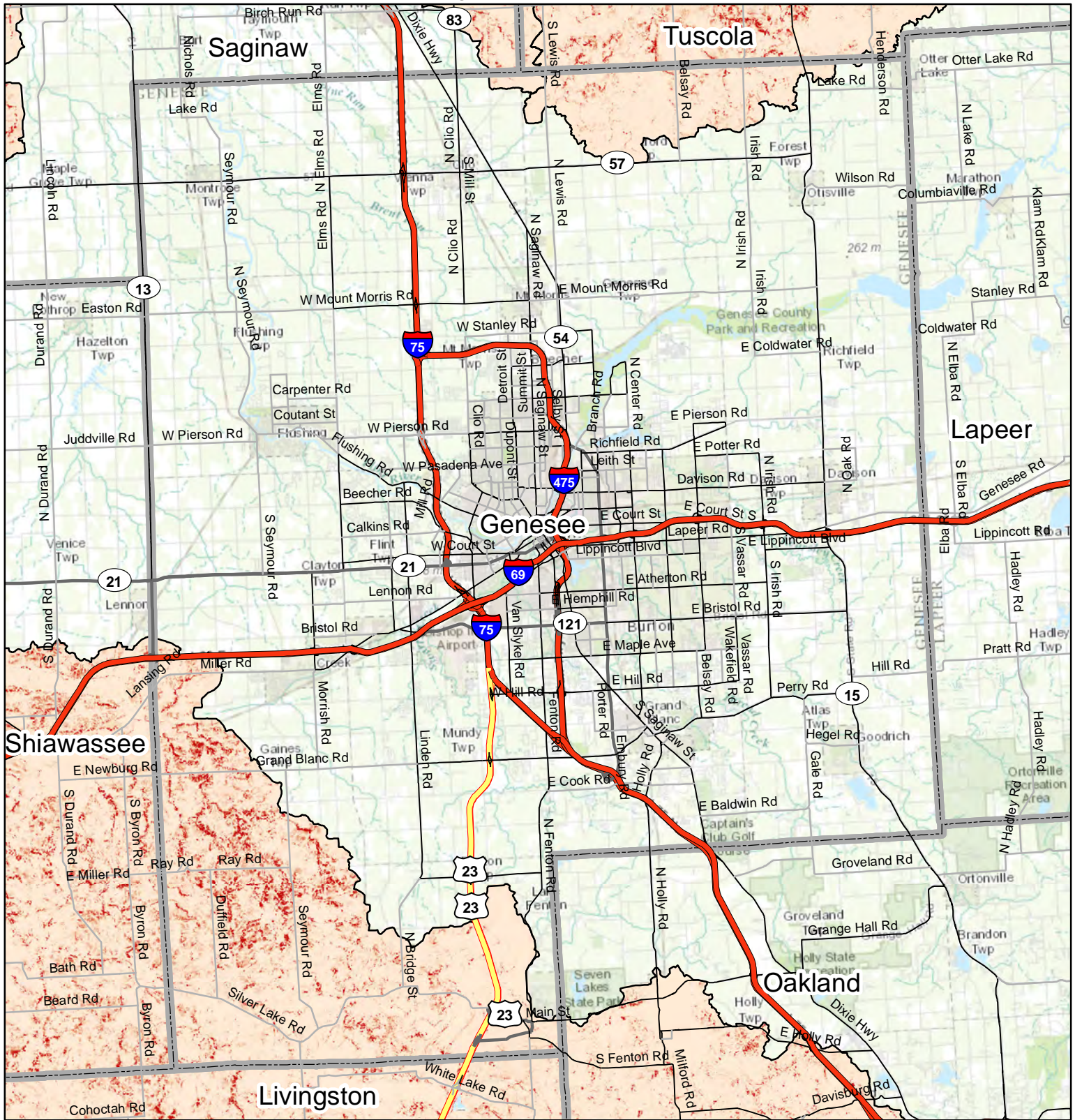
County Boundary

## Clare County



Service Layer Credits: Sources: Esri, DeLorme, NAVTEQ, TomTom, Intermap, increment P Corp., GEBCO, USGS, FAO, NPS, NRCAN, GeoBase, IGN, Kadaster NL, Ordnance Survey, Esri Japan, METI, Esri China (Hong Kong), swisstopo, and the GIS User Community

# Sediment Runoff in RCPP Eligible Watersheds (Indicated by pink shaded areas)



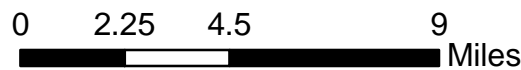
**Sediment Runoff**  
(tons/acre)

High : 1.46714

Low : 0

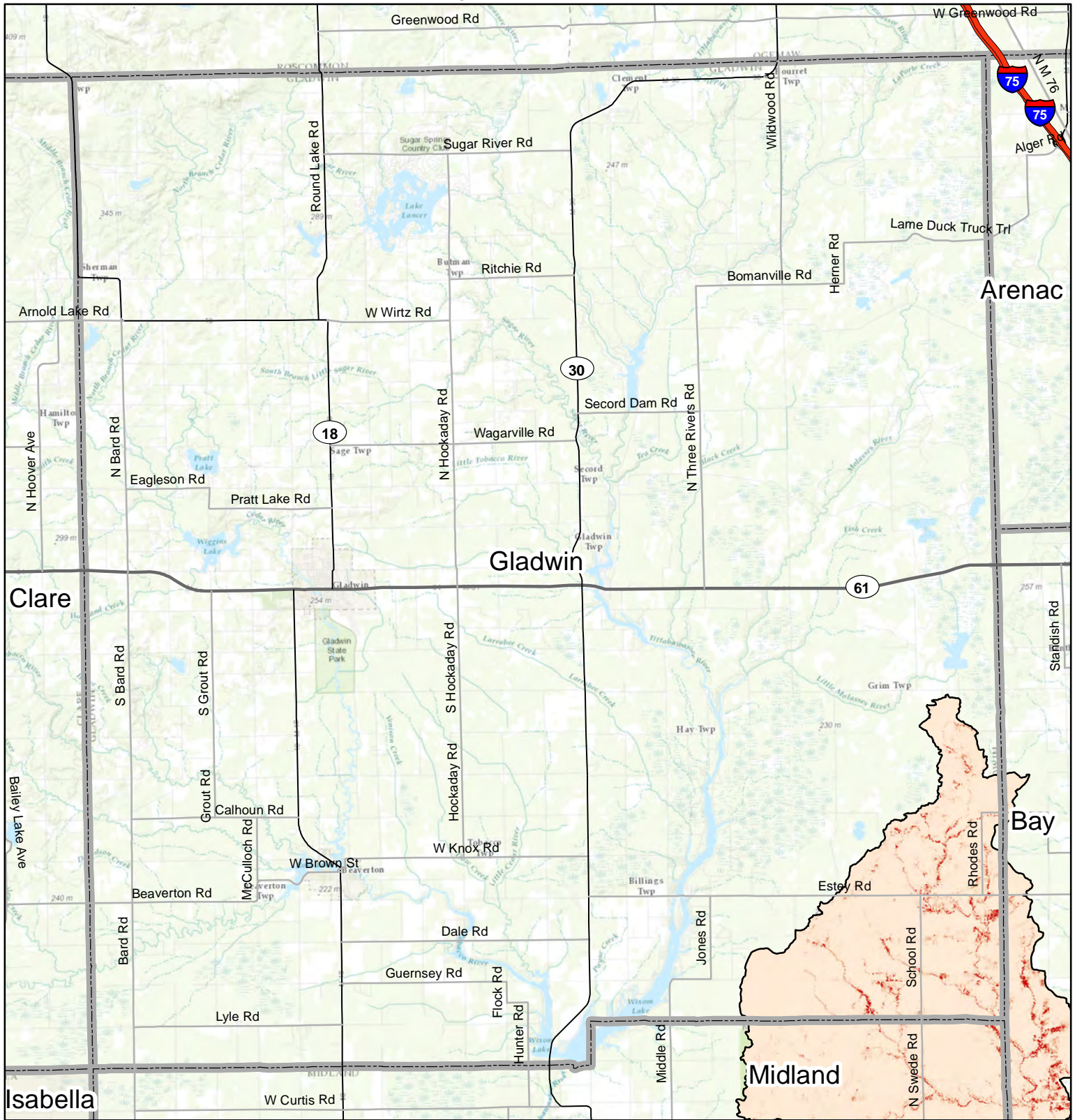
County Boundary

## Genesee County



Service Layer Credits: Sources: Esri, DeLorme, NAVTEQ, TomTom, Intermap, increment P Corp., GEBCO, USGS, FAO, NPS, NRCAN, GeoBase, IGN, Kadaster NL, Ordnance Survey, Esri Japan, METI, Esri China (Hong Kong), swisstopo, and the GIS User Community

# Sediment Runoff in RCPP Eligible Watersheds (Indicated by pink shaded areas)



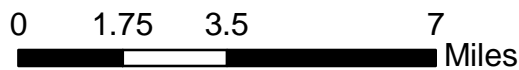
**Sediment Runoff**  
(tons/acre)

High : 0.537069

Low : 0

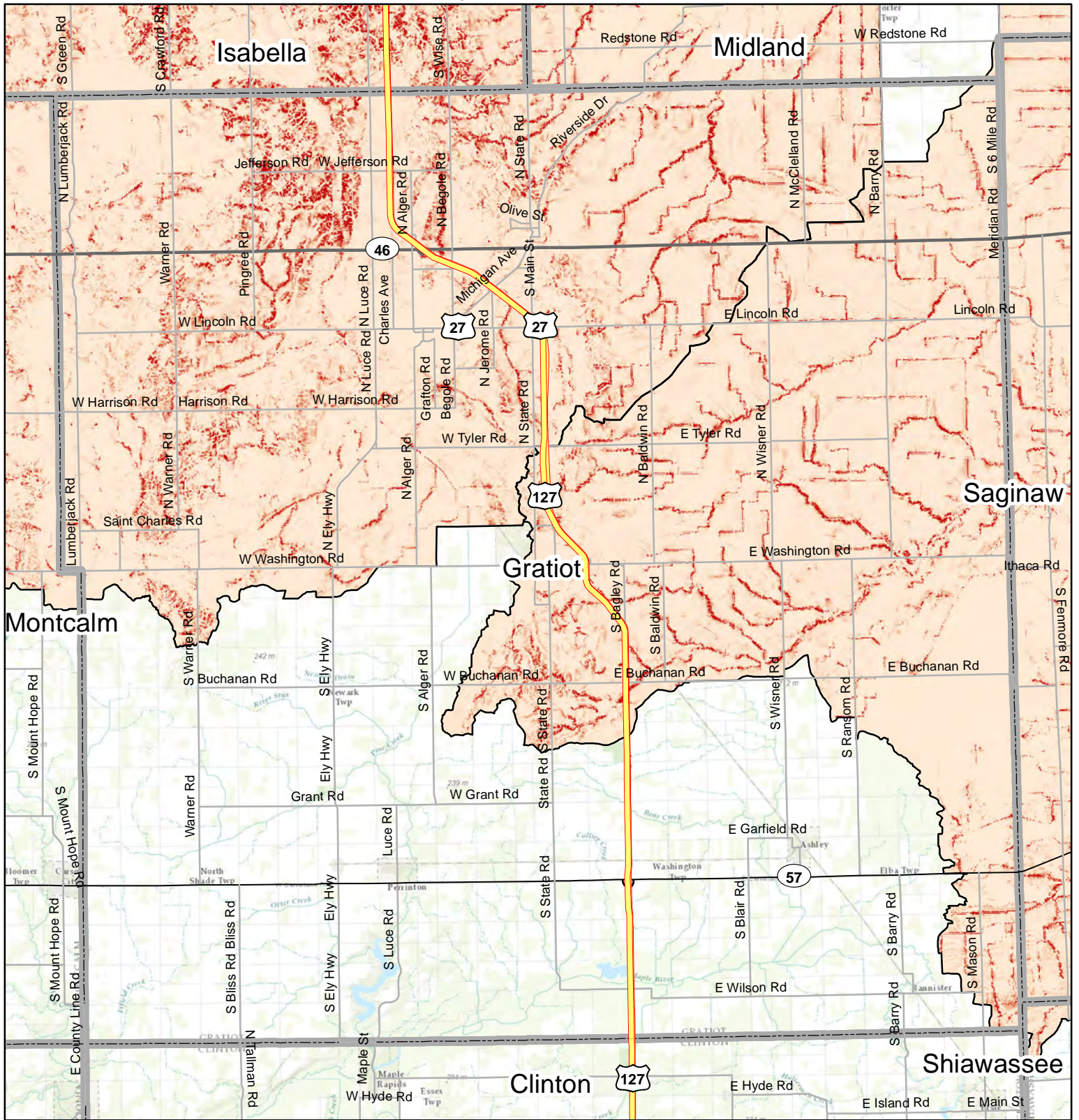
County Boundary

## Gladwin County



Service Layer Credits: Sources: Esri, DeLorme, NAVTEQ, TomTom, Intermap, increment P Corp., GEBCO, USGS, FAO, NPS, NRCAN, GeoBase, IGN, Kadaster NL, Ordnance Survey, Esri Japan, METI, Esri China (Hong Kong), swisstopo, and the GIS User Community

# Sediment Runoff in RCPP Eligible Watersheds (Indicated by pink shaded areas)

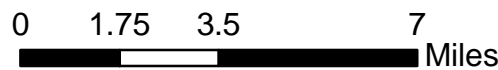


**Sediment Runoff**  
(tons/acre)

High : 1.30619  
Low : 0

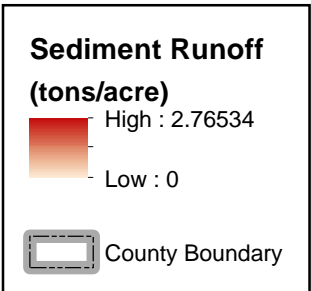
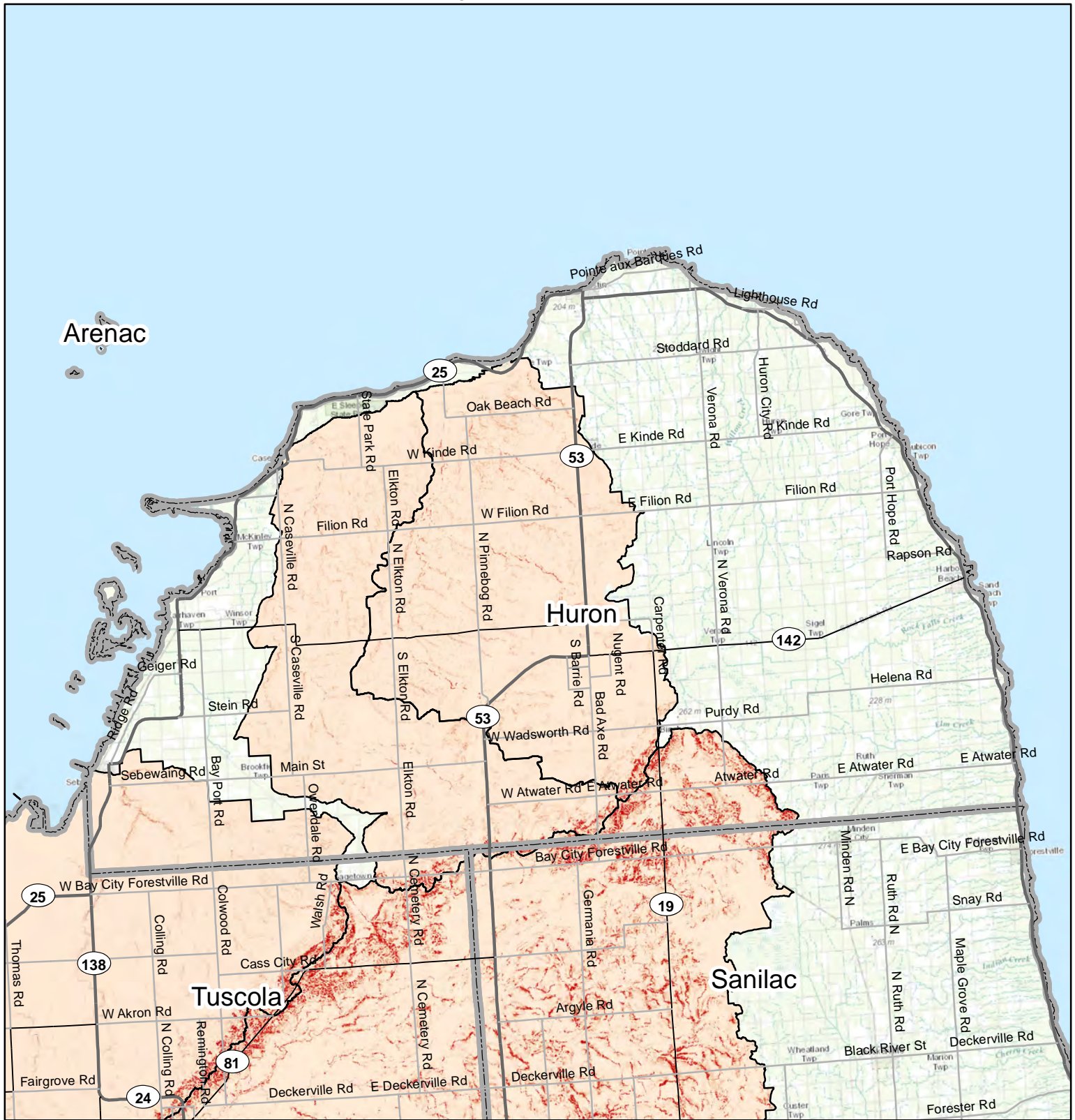
County Boundary

## Gratiot County



Service Layer Credits: Sources: Esri, DeLorme, NAVTEQ, TomTom, Intermap, increment P Corp., GEBCO, USGS, FAO, NPS, NRCAN, GeoBase, IGN, Kadaster NL, Ordnance Survey, Esri Japan, METI, Esri China (Hong Kong), swisstopo, and the GIS User Community

# Sediment Runoff in RCPP Eligible Watersheds (Indicated by pink shaded areas)

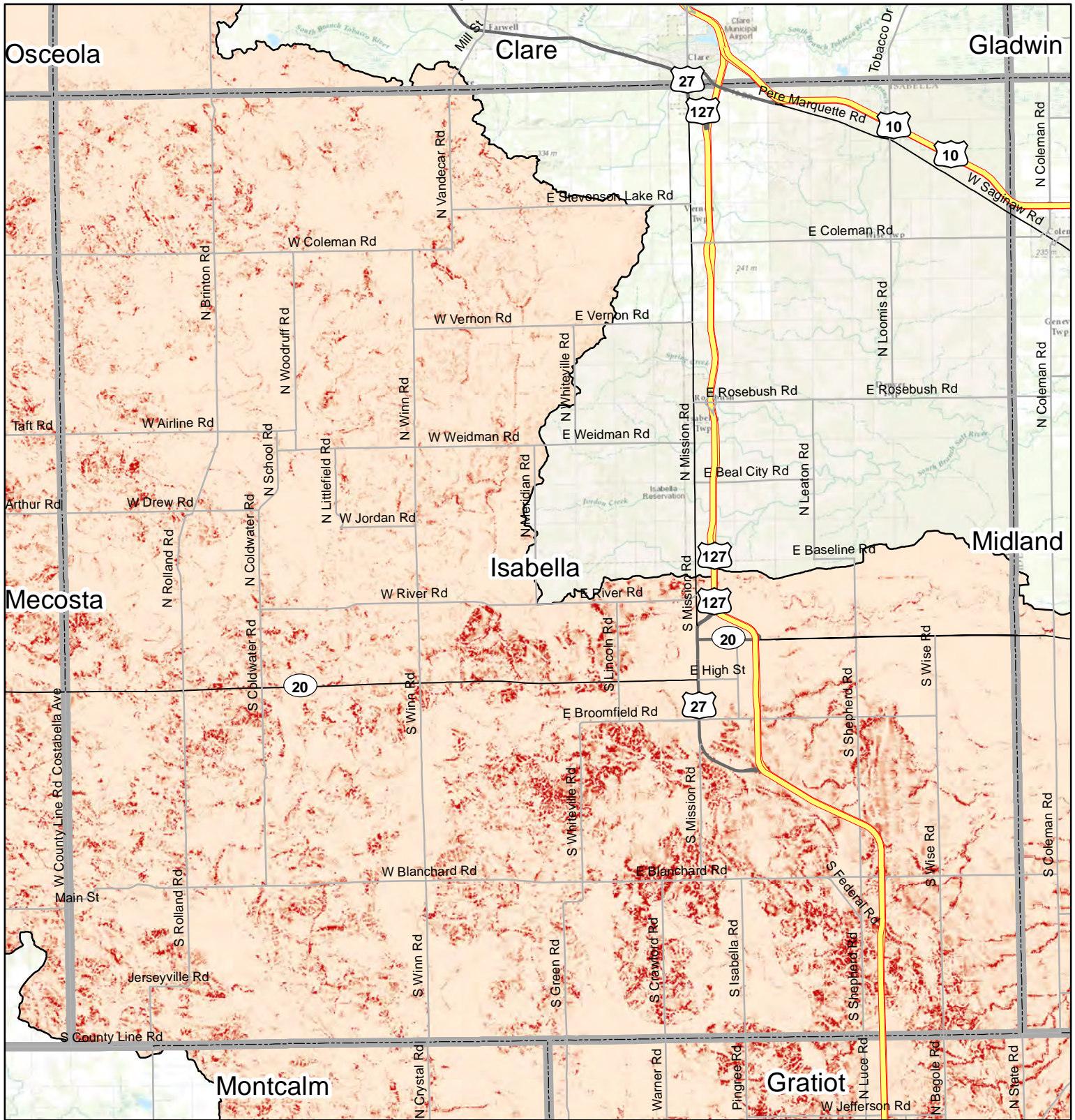


## Huron County



Service Layer Credits: Sources: Esri, DeLorme, NAVTEQ, TomTom, Intermap, increment P Corp., GEBSCO, USGS, FAO, NPS, NRCAN, GeoBase, IGN, Kadaster NL, Ordnance Survey, Esri Japan, METI, Esri China (Hong Kong), swisstopo, and the GIS User Community

# Sediment Runoff in RCPP Eligible Watersheds (Indicated by pink shaded areas)

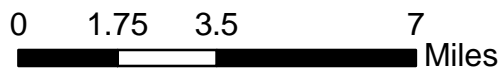


**Sediment Runoff**  
(tons/acre)

High : 1.93631  
Low : 0

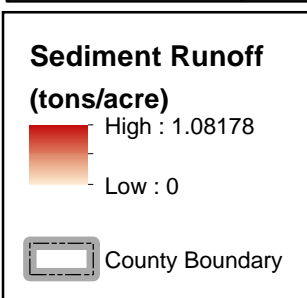
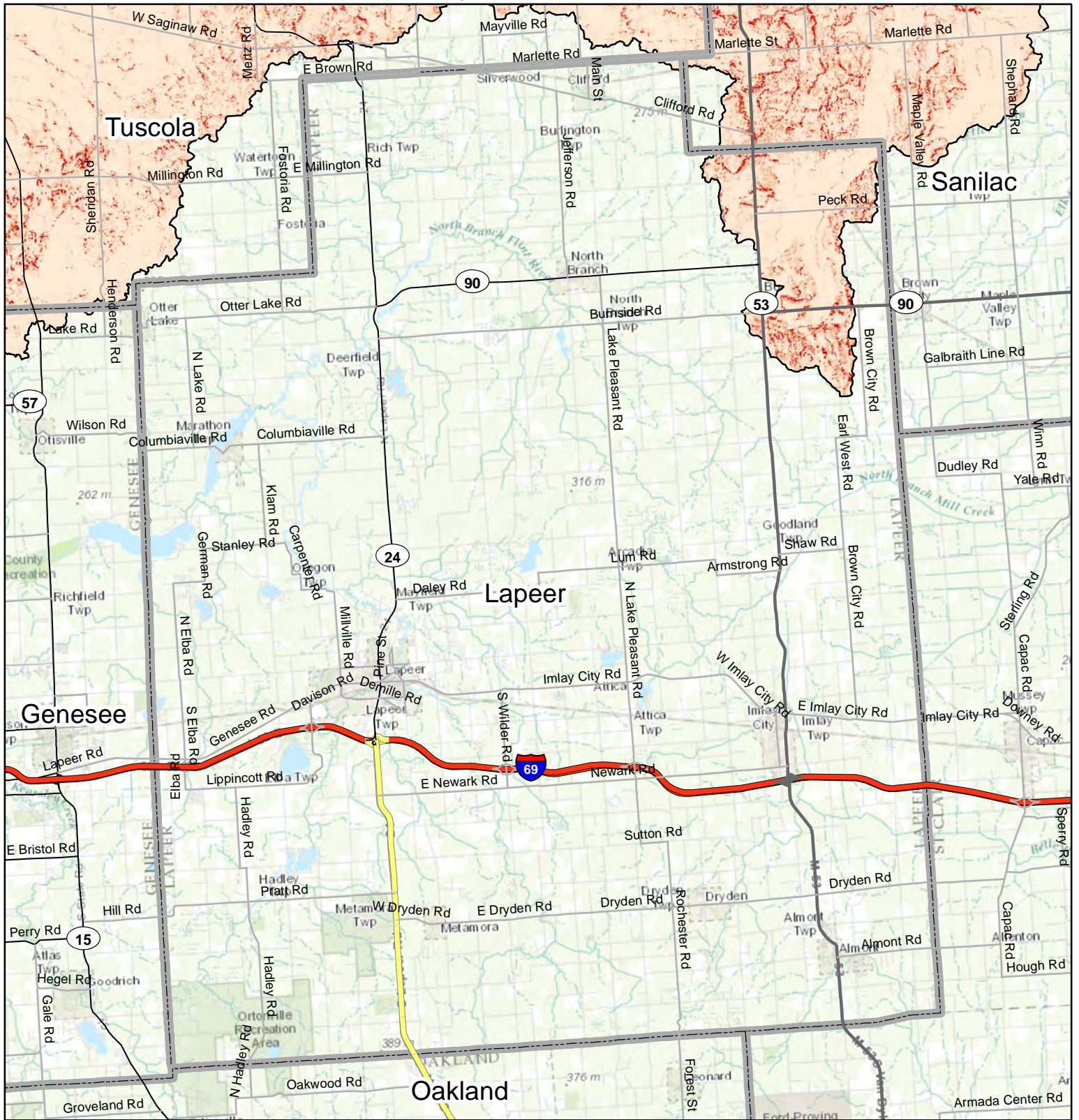
County Boundary

## Isabella County

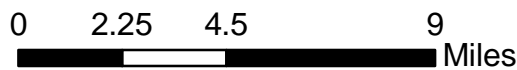


Service Layer Credits: Sources: Esri, DeLorme, NAVTEQ, TomTom, Intermap, increment P Corp., GEBCO, USGS, FAO, NPS, NRCAN, GeoBase, IGN, Kadaster NL, Ordnance Survey, Esri Japan, METI, Esri China (Hong Kong), swisstopo, and the GIS User Community

# Sediment Runoff in RCPP Eligible Watersheds (Indicated by pink shaded areas)



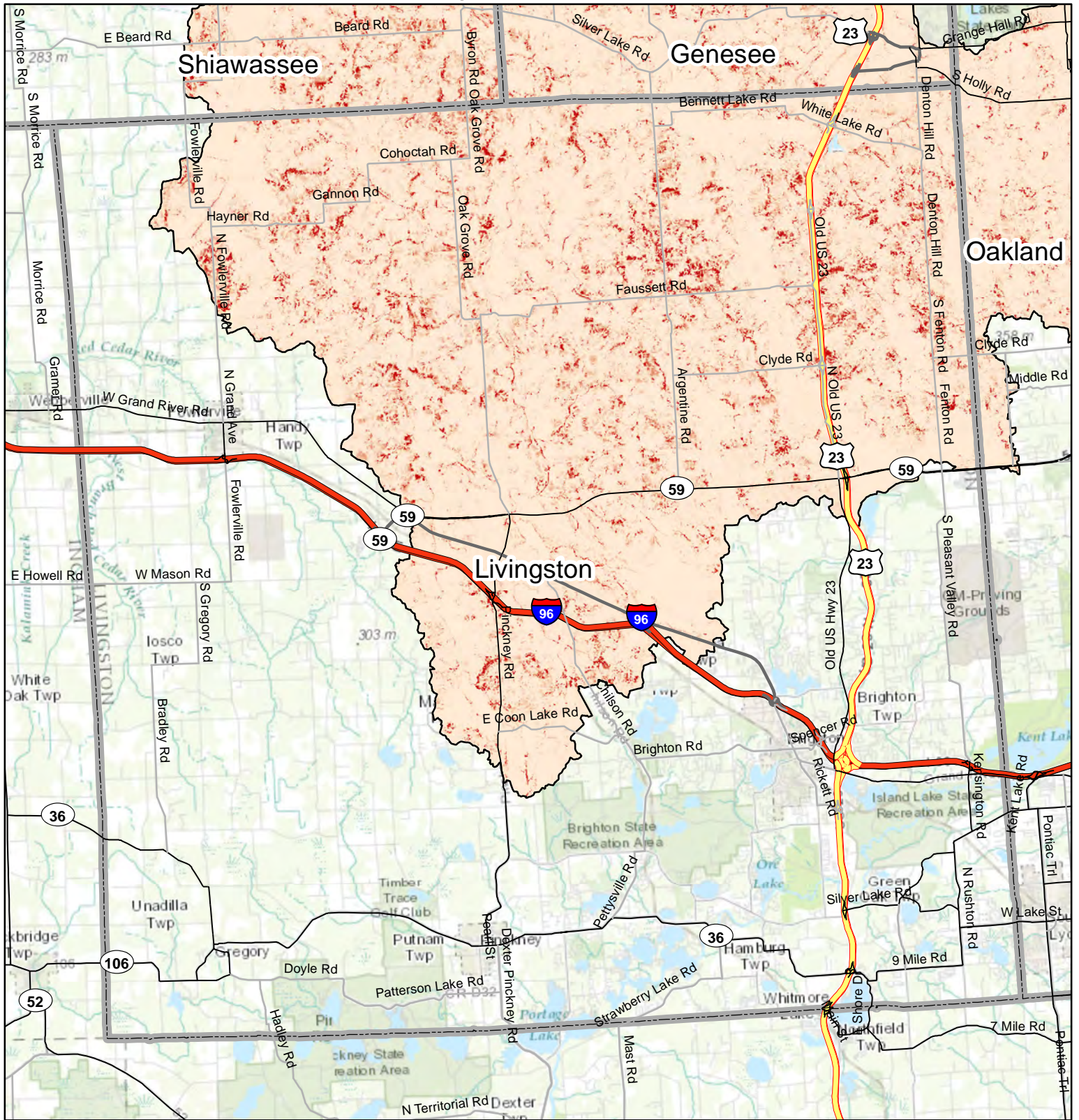
## Lapeer County



Service Layer Credits: Sources: Esri, DeLorme, NAVTEQ, TomTom, Intermap, increment P Corp., GEBCO, USGS, FAO, NPS, NRCAN, GeoBase, IGN, Kadaster NL, Ordnance Survey, Esri Japan, METI, Esri China (Hong Kong), swisstopo, and the GIS User Community



# Sediment Runoff in RCPP Eligible Watersheds (Indicated by pink shaded areas)



**Sediment Runoff**  
(tons/acre)

High : 3.42108  
Low : 0

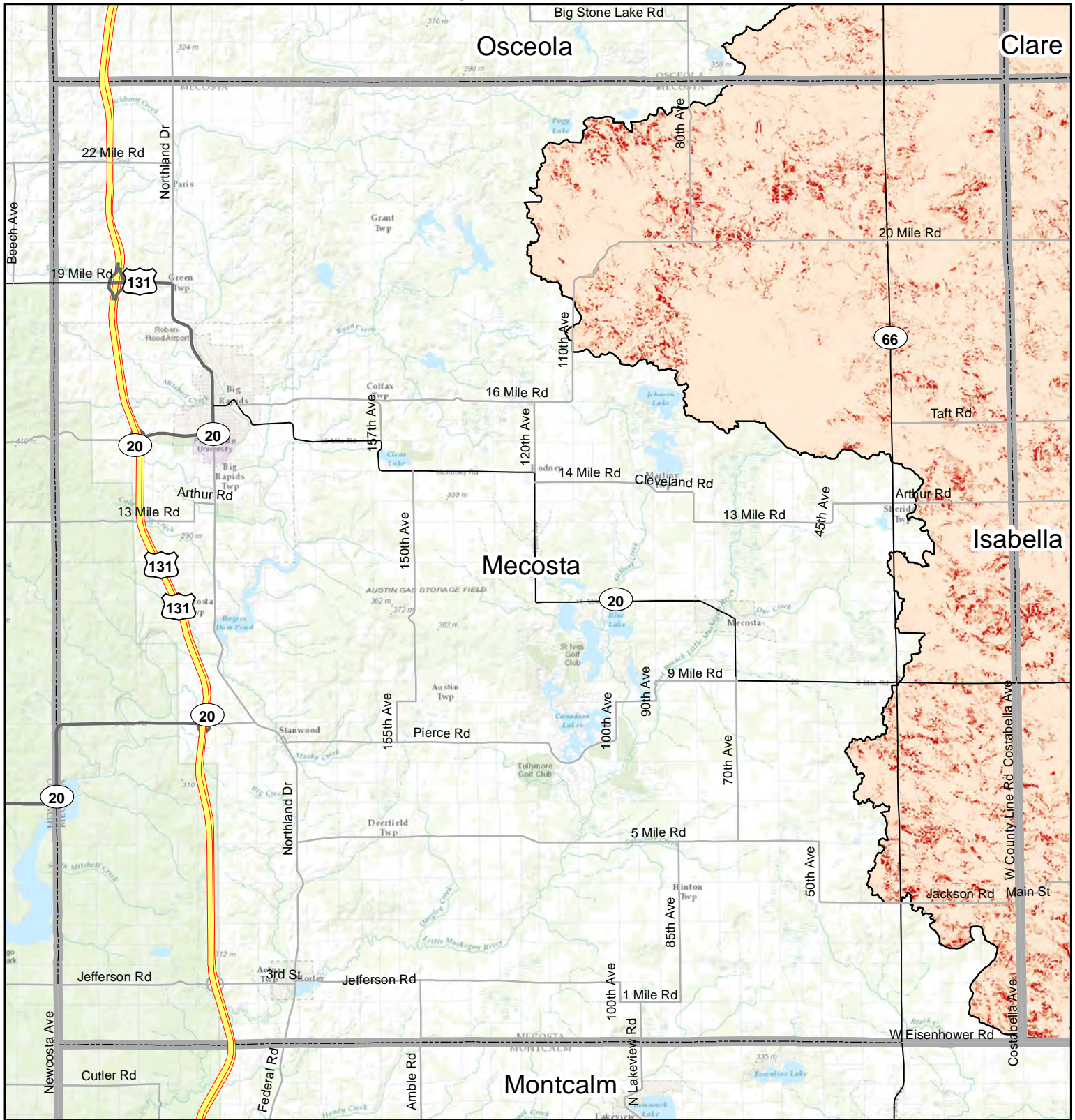
County Boundary

## Livingston County



Service Layer Credits: Sources: Esri, DeLorme, NAVTEQ, TomTom, Intermap, increment P Corp., GEBCO, USGS, FAO, NPS, NRCAN, GeoBase, IGN, Kadaster NL, Ordnance Survey, Esri Japan, METI, Esri China (Hong Kong), swisstopo, and the GIS User Community

# Sediment Runoff in RCPP Eligible Watersheds (Indicated by pink shaded areas)



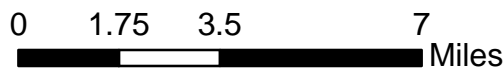
**Sediment Runoff**  
(tons/acre)

High : 1.7763

Low : 0

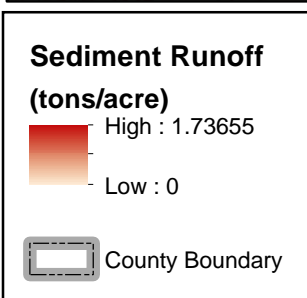
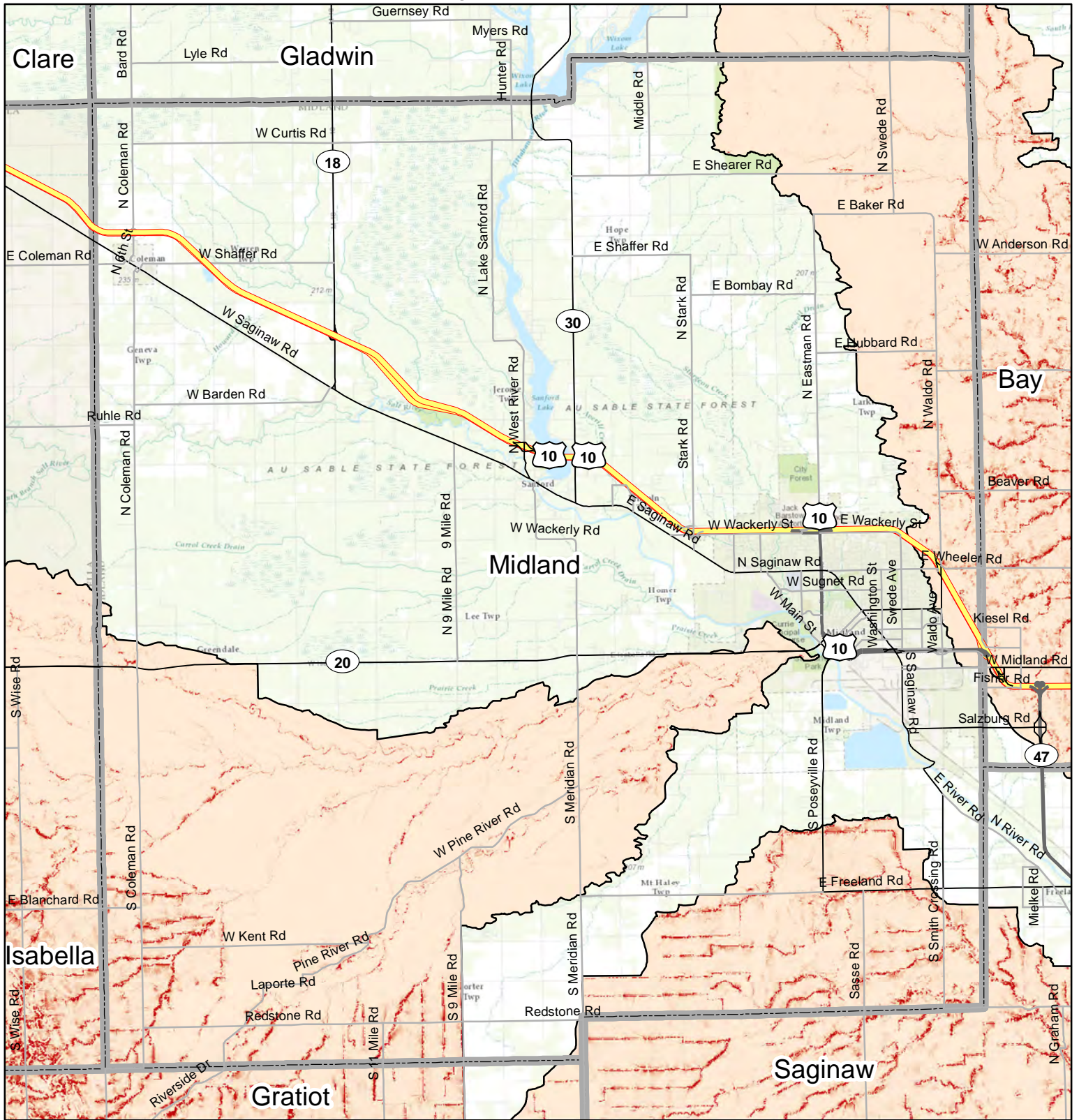
County Boundary

## Mecosta County

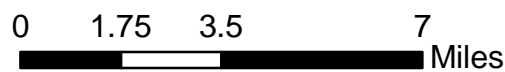


Service Layer Credits: Sources: Esri, DeLorme, NAVTEQ, TomTom, Intermap, increment P Corp., GEBCO, USGS, FAO, NPS, NRCAN, GeoBase, IGN, Kadaster NL, Ordnance Survey, Esri Japan, METI, Esri China (Hong Kong), swisstopo, and the GIS User Community

# Sediment Runoff in RCPP Eligible Watersheds (Indicated by pink shaded areas)

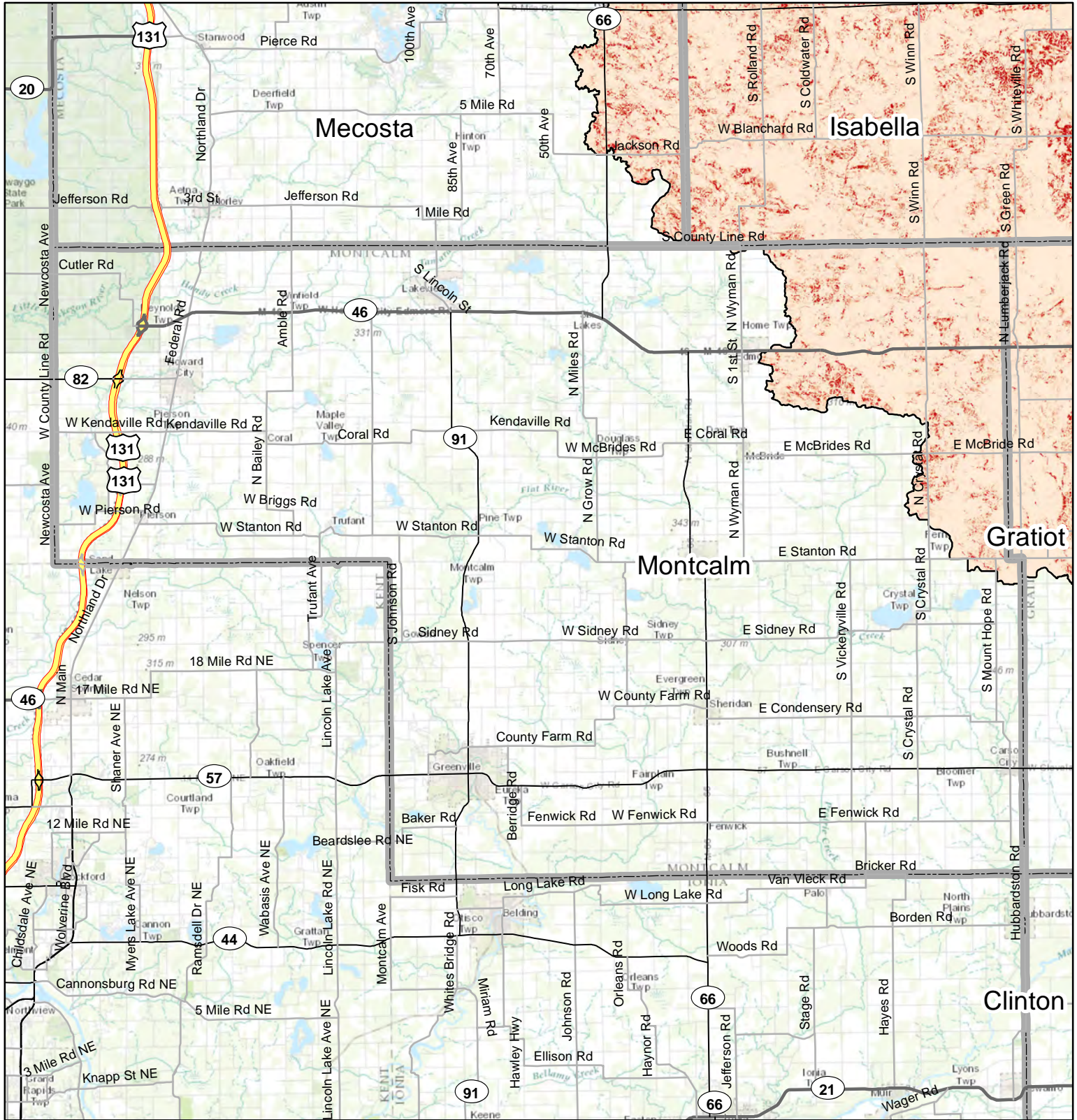


## Midland County



Service Layer Credits: Sources: Esri, DeLorme, NAVTEQ, TomTom, Intermap, increment P Corp., GEBCO, USGS, FAO, NPS, NRCAN, GeoBase, IGN, Kadaster NL, Ordnance Survey, Esri Japan, METI, Esri China (Hong Kong), swisstopo, and the GIS User Community

# Sediment Runoff in RCPP Eligible Watersheds (Indicated by pink shaded areas)



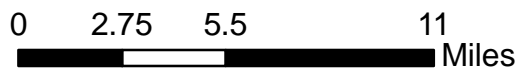
**Sediment Runoff**  
(tons/acre)

High : 1.43445

Low : 0

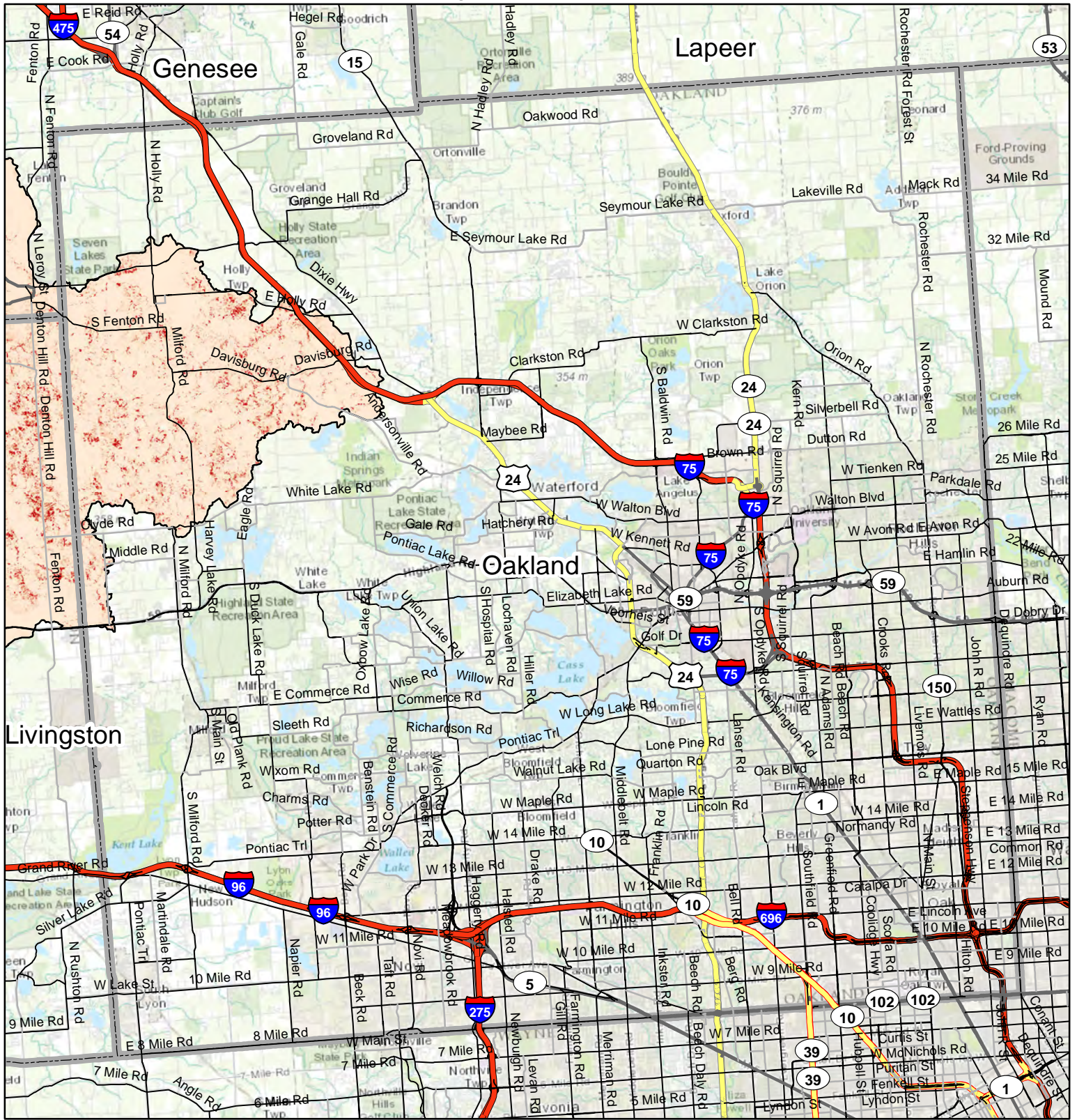
County Boundary

## Montcalm County



Service Layer Credits: Sources: Esri, DeLorme, NAVTEQ, TomTom, Intermap, increment P Corp., GEBCO, USGS, FAO, NPS, NRCAN, GeoBase, IGN, Kadaster NL, Ordnance Survey, Esri Japan, METI, Esri China (Hong Kong), swisstopo, and the GIS User Community

# Sediment Runoff in RCPP Eligible Watersheds (Indicated by pink shaded areas)



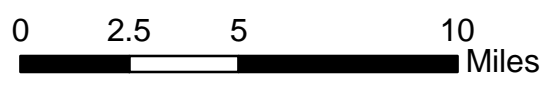
**Sediment Runoff  
(tons/acre)**

High : 1.05522

Low : 0

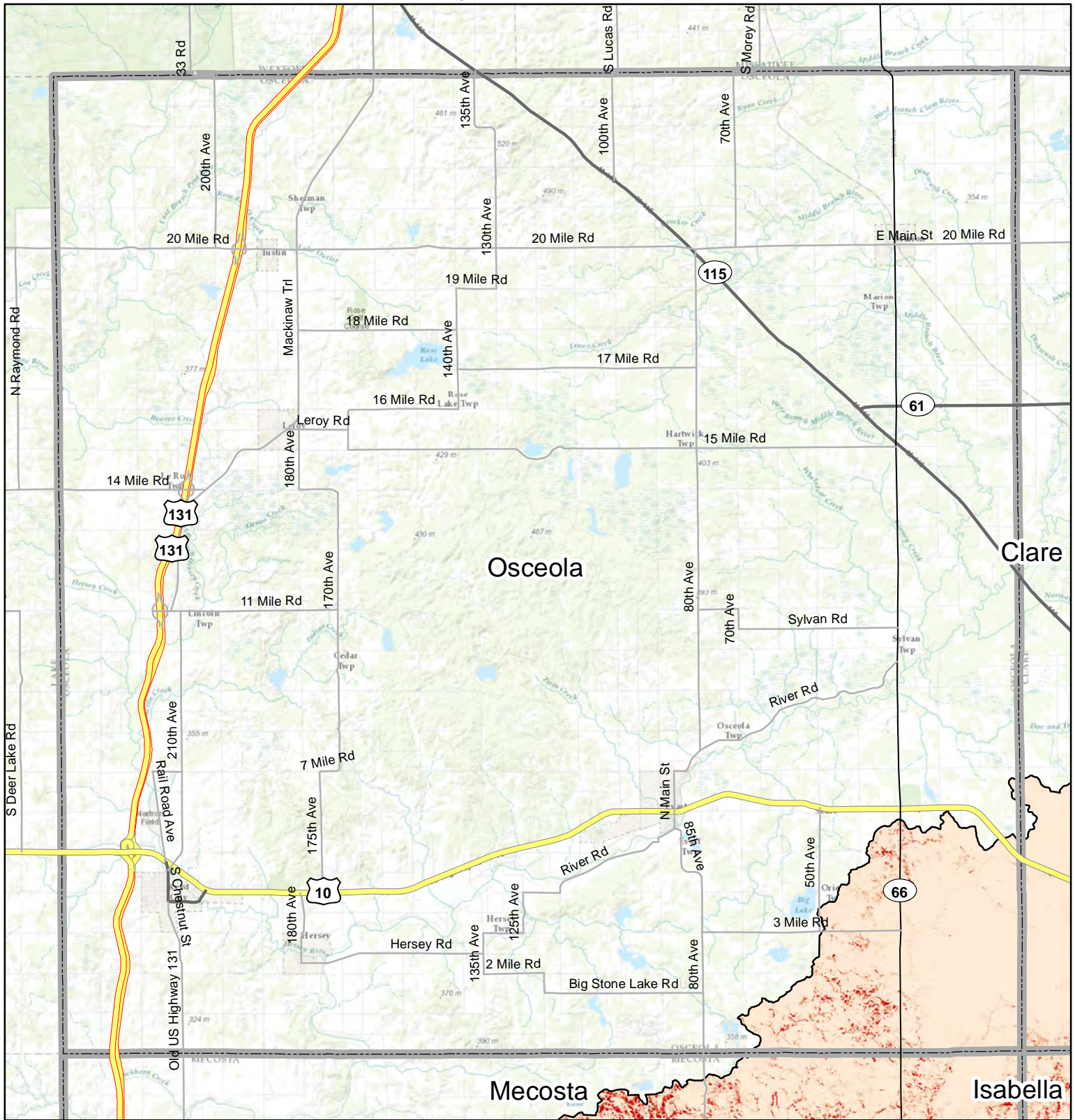
County Boundary

## Oakland County



Service Layer Credits: Sources: Esri, DeLorme, NAVTEQ, TomTom, Intermap, increment P Corp., GEBCO, USGS, FAO, NPS, NRCAN, GeoBase, IGN, Kadaster NL, Ordnance Survey, Esri Japan, METI, Esri China (Hong Kong), swisstopo, and the GIS User Community

# Sediment Runoff in RCPP Eligible Watersheds (Indicated by pink shaded areas)

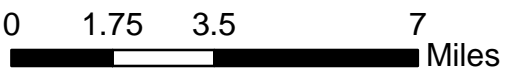


**Sediment Runoff  
(tons/acre)**

High : 0.850711  
Low : 0

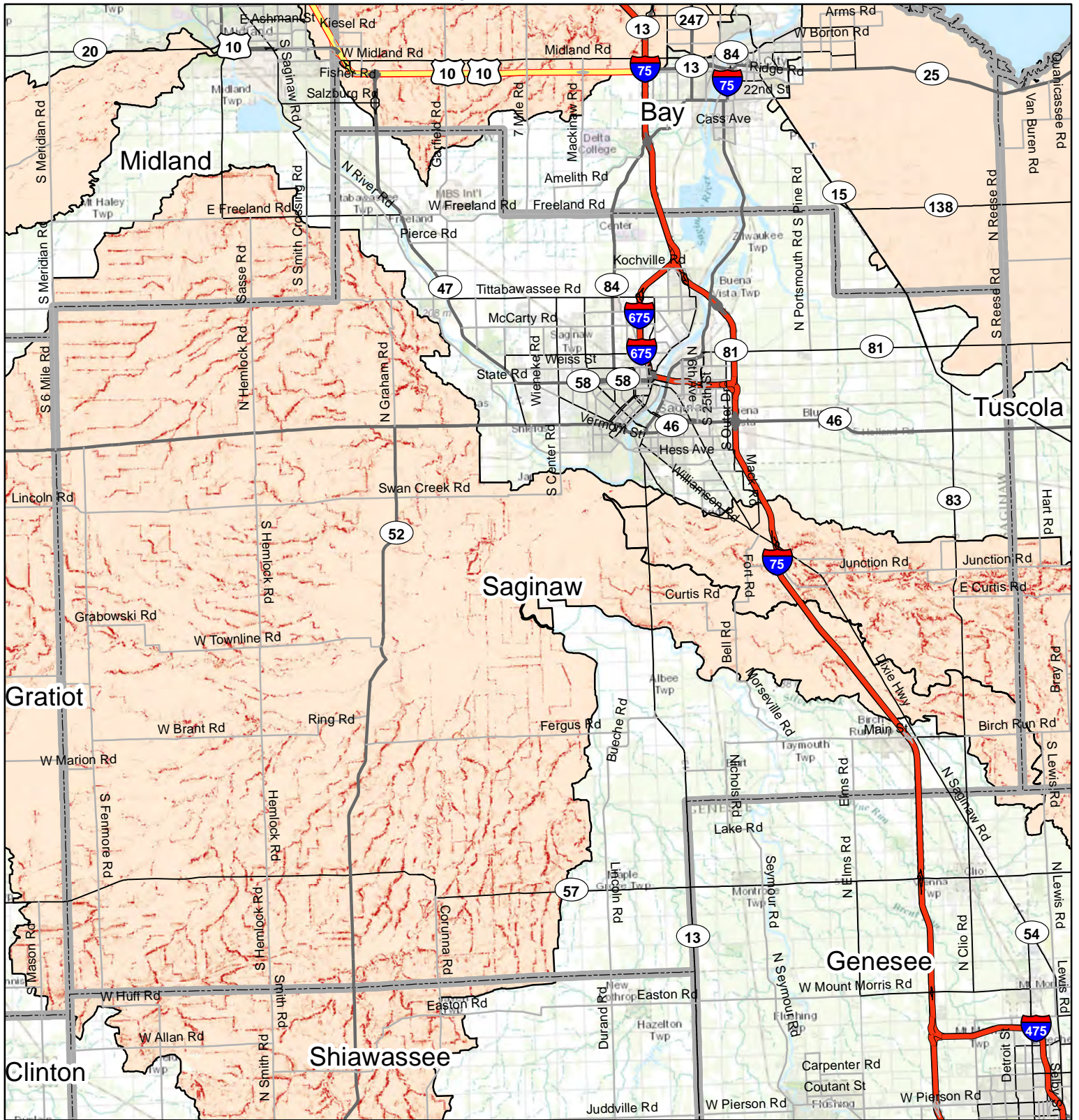
County Boundary

## Osceola County



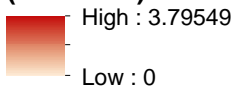
Service Layer Credits: Sources: Esri, DeLorme, NAVTEQ, TomTom, Intermap, increment P Corp., GEBCO, USGS, FAO, NPS, NRCAN, GeoBase, IGN, Kadaster NL, Ordnance Survey, Esri Japan, METI, Esri China (Hong Kong), swisstopo, and the GIS User Community

# Sediment Runoff in RCPP Eligible Watersheds (Indicated by pink shaded areas)

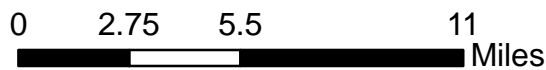


## Saginaw County

### Sediment Runoff (tons/acre)



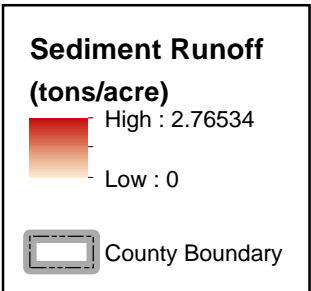
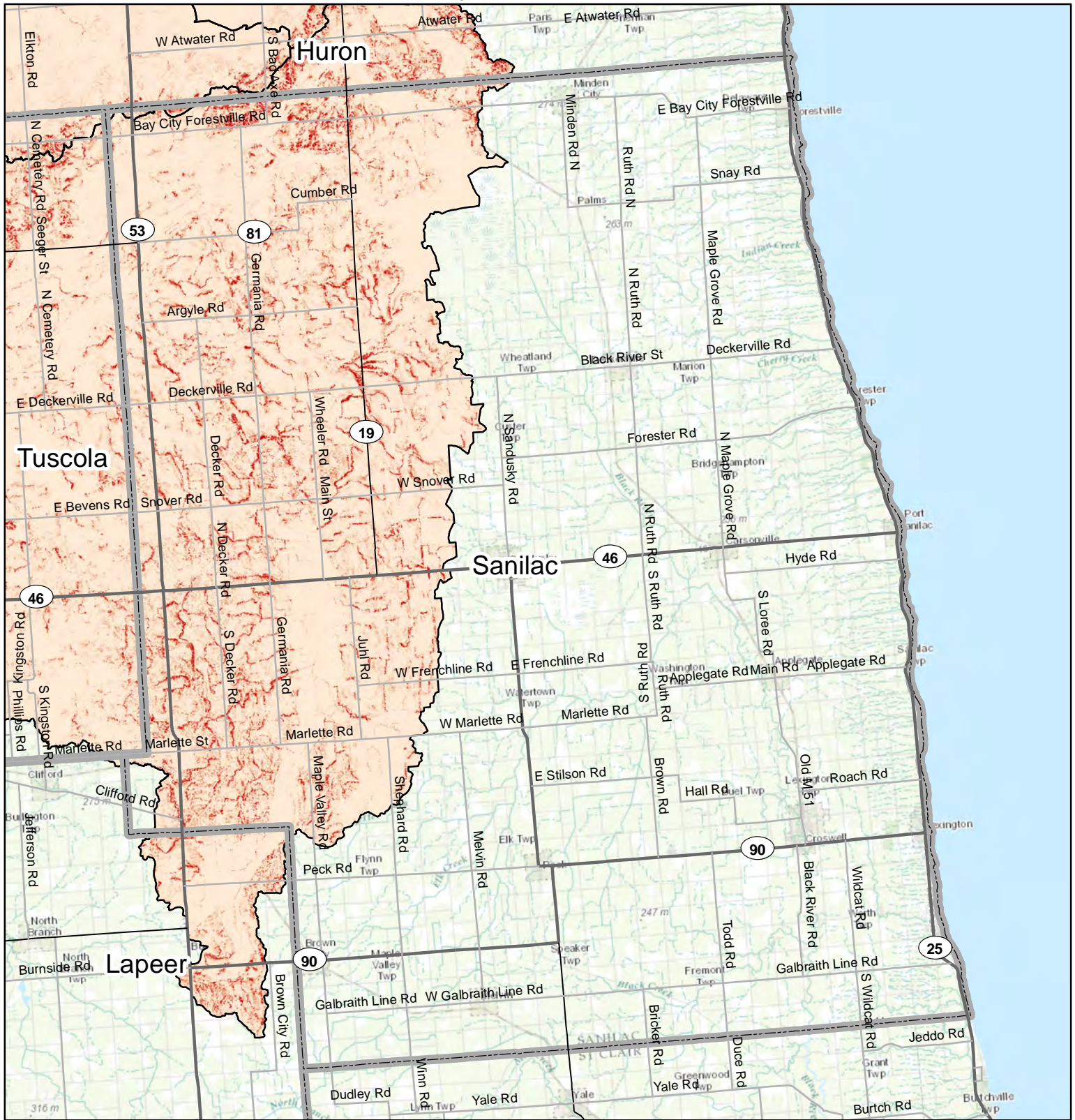
County Boundary



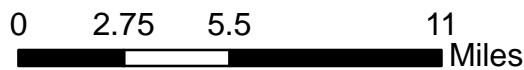
Service Layer Credits: Sources: Esri, DeLorme, NAVTEQ, TomTom, Intermap, increment P Corp., GEBCO, USGS, FAO, NPS, NRCAN, GeoBase, IGN, Kadaster NL, Ordnance Survey, Esri Japan, METI, Esri China (Hong Kong), swisstopo, and the GIS User Community



# Sediment Runoff in RCPP Eligible Watersheds (Indicated by pink shaded areas)



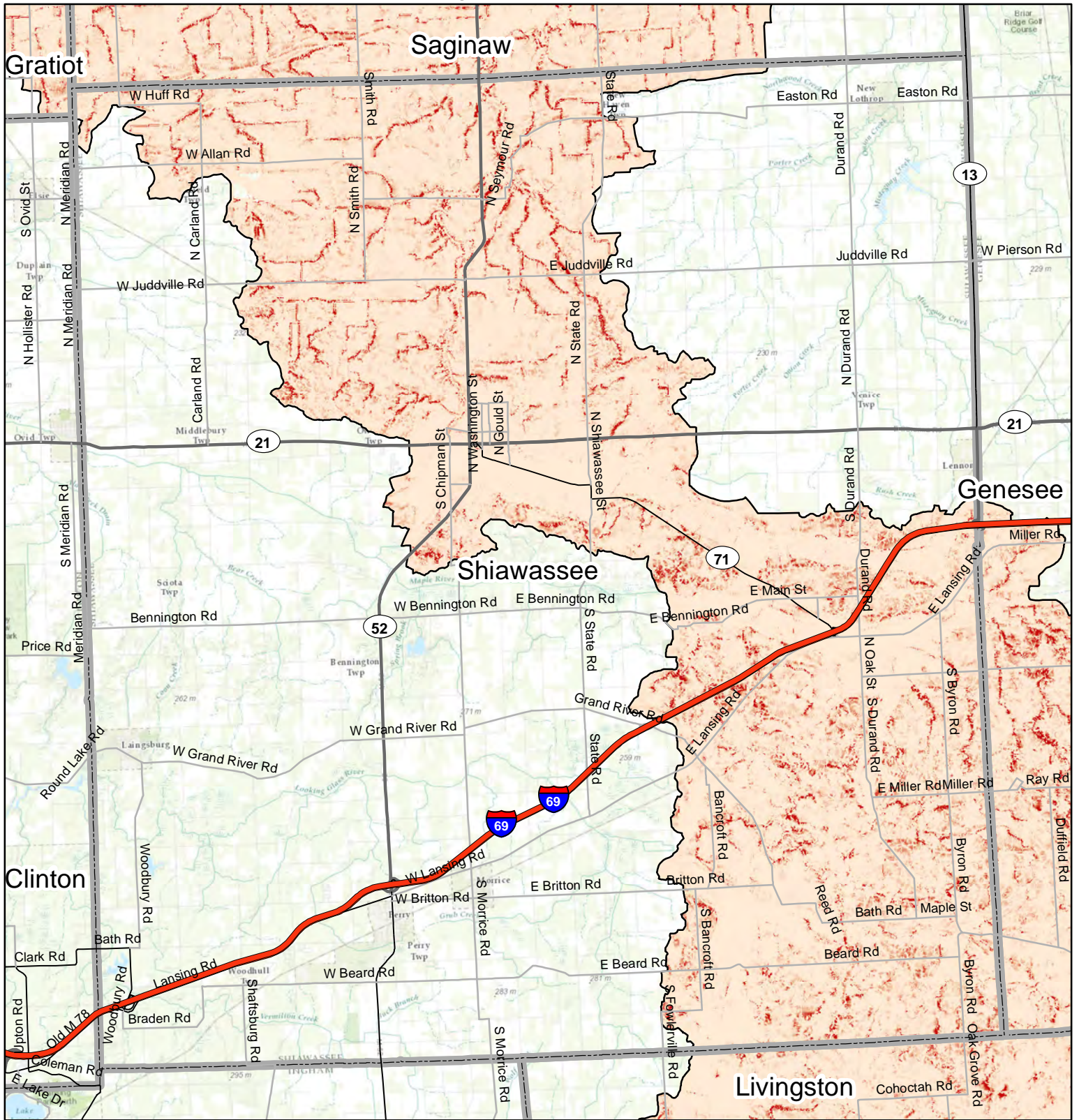
## Sanilac County



Service Layer Credits: Sources: Esri, DeLorme, NAVTEQ, TomTom, Intermap, increment P Corp., GEBCO, USGS, FAO, NPS, NRCAN, GeoBase, IGN, Kadaster NL, Ordnance Survey, Esri Japan, METI, Esri China (Hong Kong), swisstopo, and the GIS User Community



# Sediment Runoff in RCPP Eligible Watersheds (Indicated by pink shaded areas)

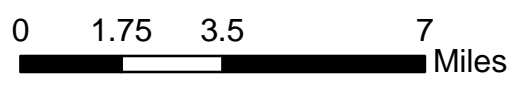


**Sediment Runoff**  
(tons/acre)

High : 3.97329  
Low : 0

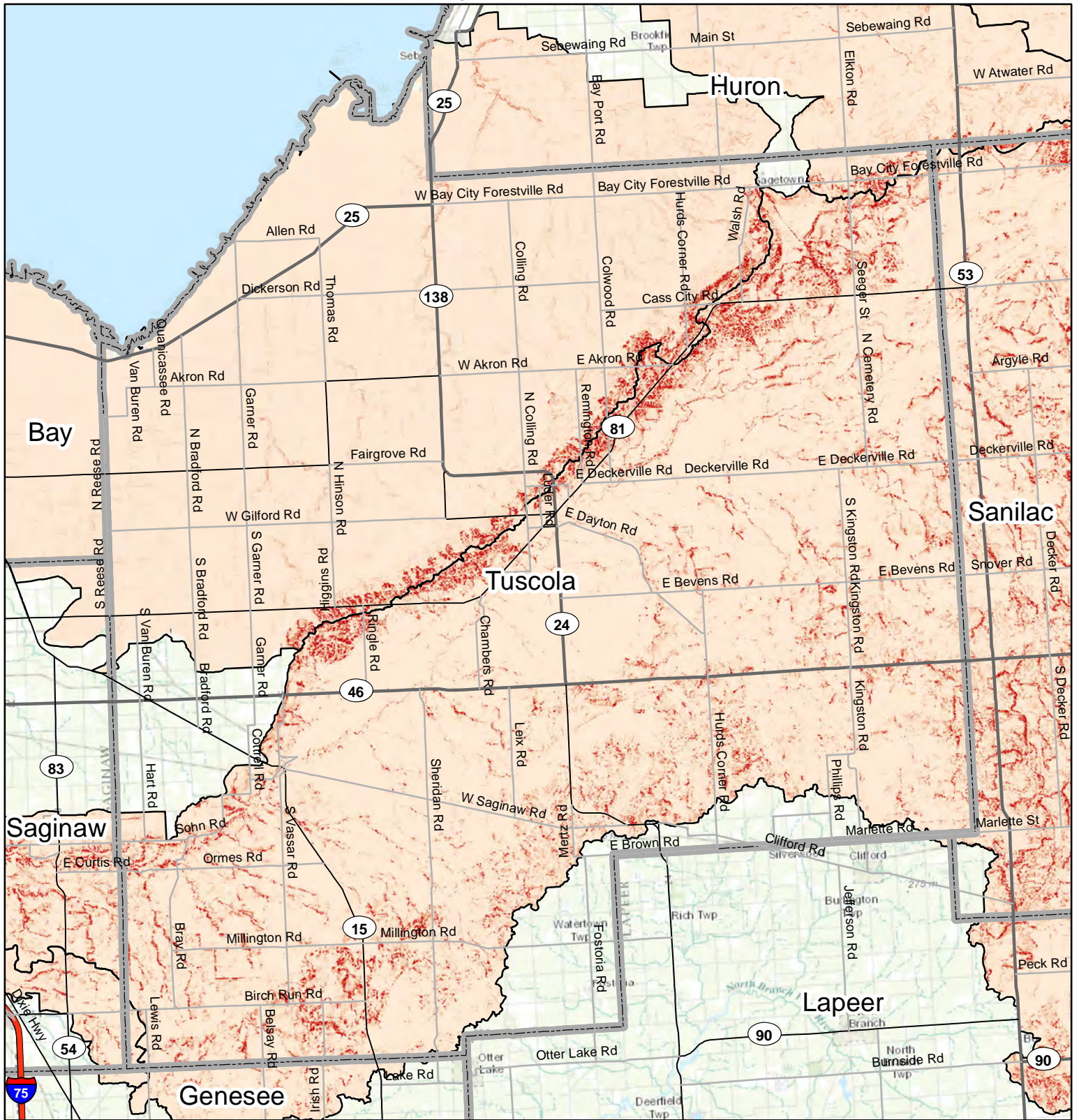
County Boundary

## Shiawassee County



Service Layer Credits: Sources: Esri, DeLorme, NAVTEQ, TomTom, Intermap, increment P Corp., GEBCO, USGS, FAO, NPS, NRCAN, GeoBase, IGN, Kadaster NL, Ordnance Survey, Esri Japan, METI, Esri China (Hong Kong), swisstopo, and the GIS User Community

# Sediment Runoff in RCPP Eligible Watersheds (Indicated by pink shaded areas)



**Sediment Runoff**  
(tons/acre)

High : 2.88313

Low : 0

County Boundary

## Tuscola County



Service Layer Credits: Sources: Esri, DeLorme, NAVTEQ, TomTom, Intermap, increment P Corp., GEBCO, USGS, FAO, NPS, NRCAN, GeoBase, IGN, Kadaster NL, Ordnance Survey, Esri Japan, METI, Esri China (Hong Kong), swisstopo, and the GIS User Community