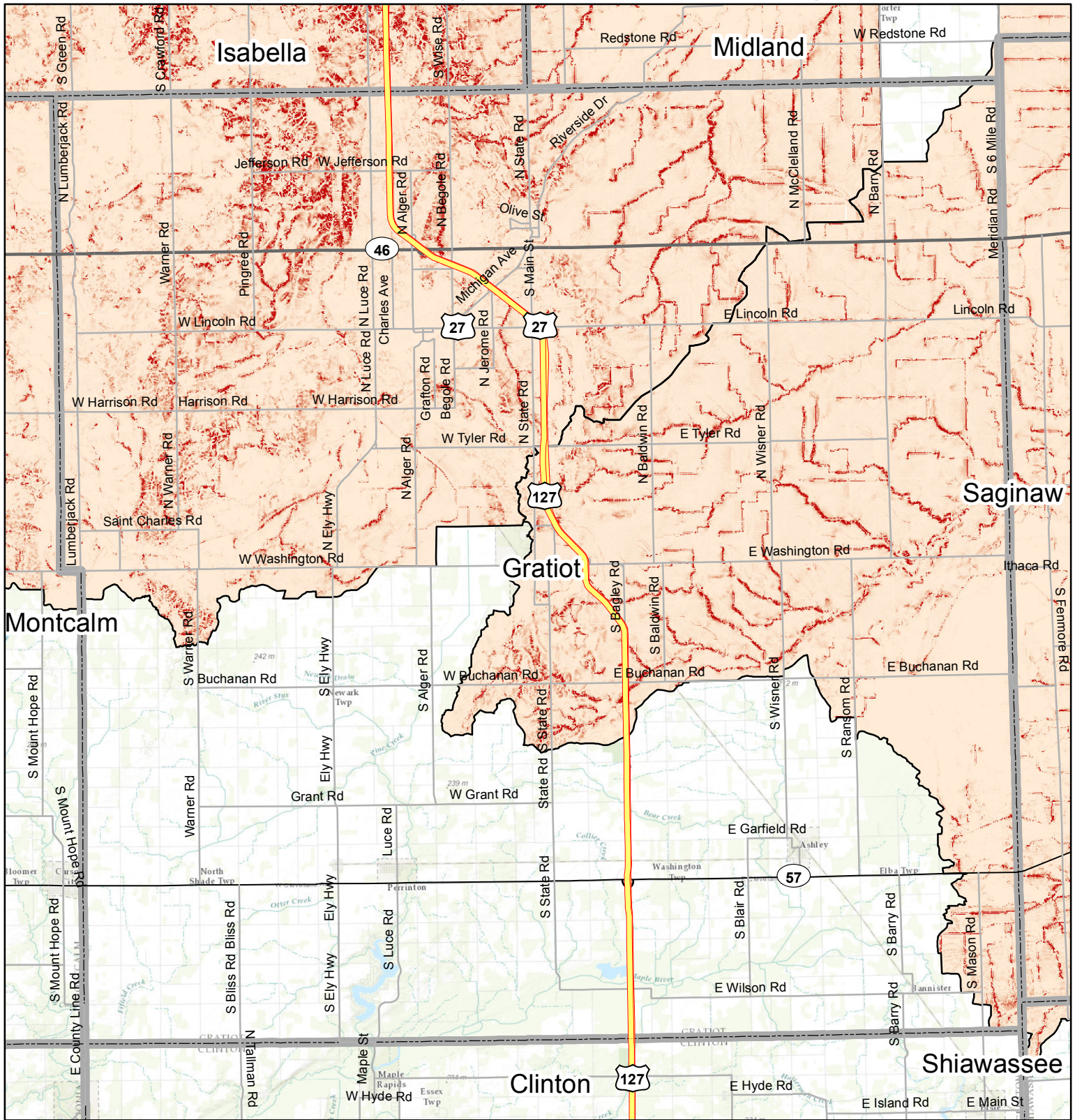


Sediment Runoff in RCPP Eligible Watersheds (Indicated by pink shaded areas)

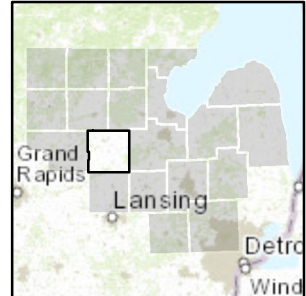
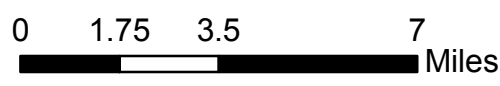


Sediment Runoff
(tons/acre)

High : 1.30619
Low : 0

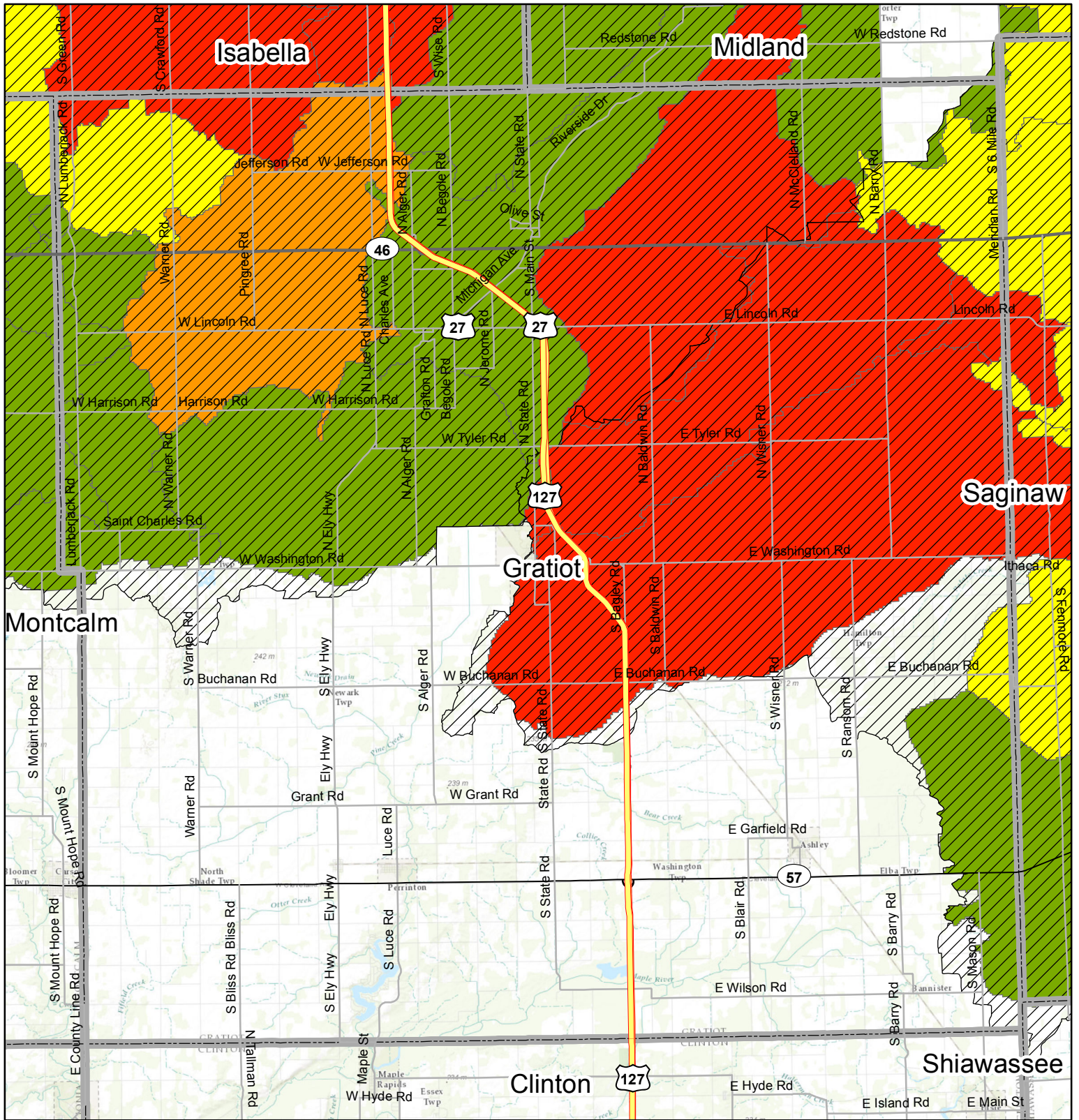
County Boundary

Gratiot County



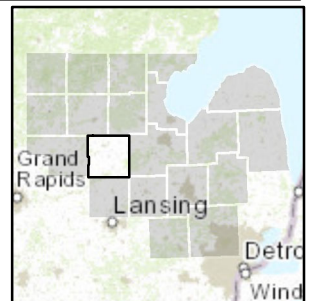
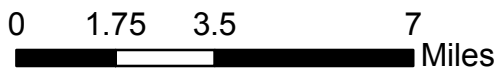
Service Layer Credits: Sources: Esri, DeLorme, NAVTEQ, TomTom, Intermap, increment P Corp., GEBCO, USGS, FAO, NPS, NRCAN, GeoBase, IGN, Kadaster NL, Ordnance Survey, Esri Japan, METI, Esri China (Hong Kong), swisstopo, and the GIS User Community

Predicted Water Quality in RCPP Eligible Watersheds



Gratiot County

- Predicted Water Quality**
- Not Limited
 - Slightly Limited
 - Moderately Limited
 - Severely Limited
 - Very Limited
 - RCPP Eligible Watersheds
 - County Boundary



Service Layer Credits: Sources: Esri, DeLorme, NAVTEQ, TomTom, Intermap, increment P Corp., GEBCO, USGS, FAO, NPS, NRCAN, GeoBase, IGN, Kadaster NL, Ordnance Survey, Esri Japan, METI, Esri China (Hong Kong), swisstopo, and the GIS User Community