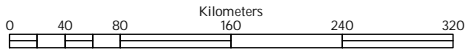


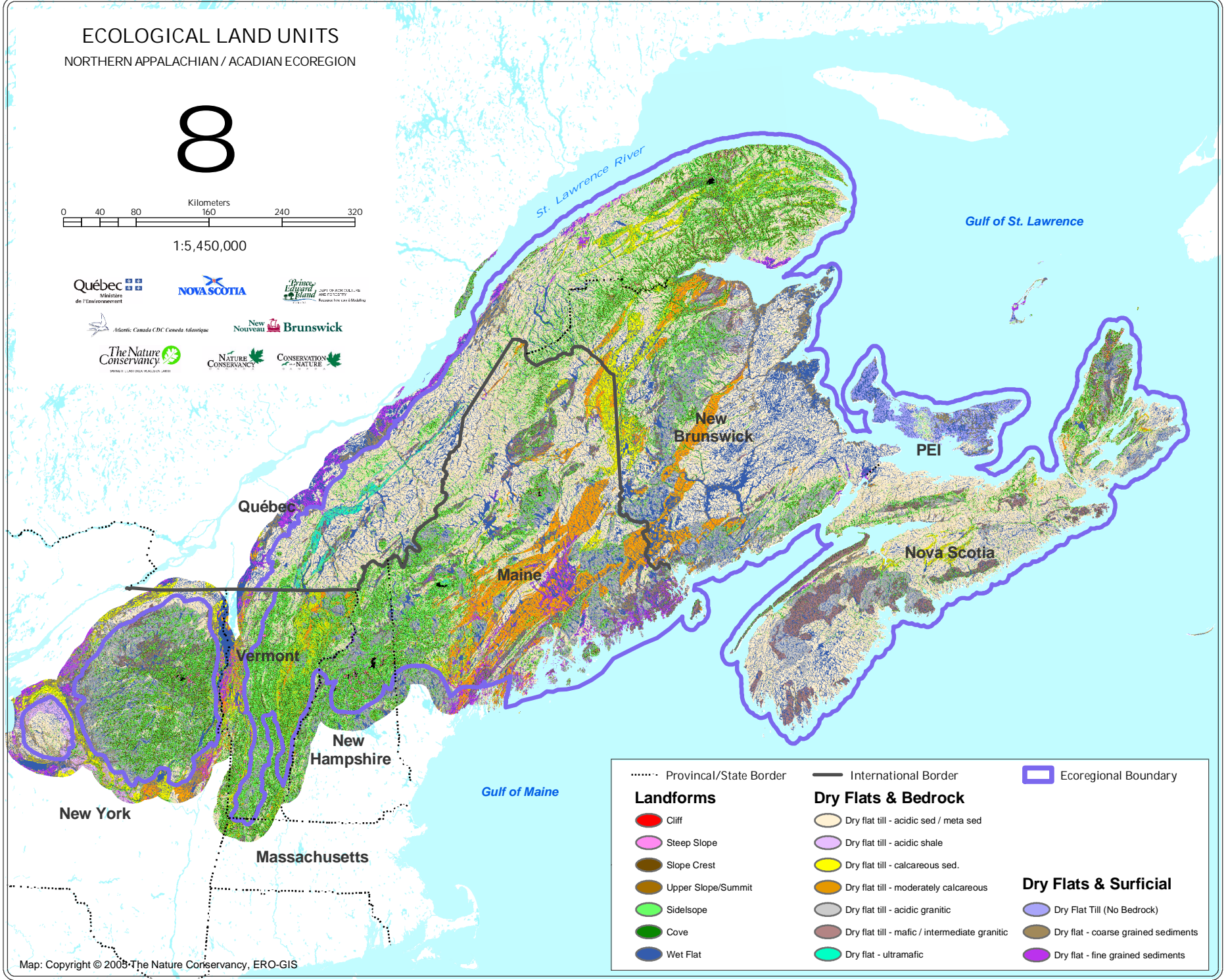
# ECOLOGICAL LAND UNITS

NORTHERN APPALACHIAN / ACADIAN ECOREGION

# 8



1:5,450,000



..... Provincial/State Border

— International Border

▭ Ecoregional Boundary

### Landforms

- Cliff
- Steep Slope
- Slope Crest
- Upper Slope/Summit
- Sidelslope
- Cove
- Wet Flat

### Dry Flats & Bedrock

- Dry flat till - acidic sed / meta sed
- Dry flat till - acidic shale
- Dry flat till - calcareous sed.
- Dry flat till - moderately calcareous
- Dry flat till - acidic granitic
- Dry flat till - mafic / intermediate granitic
- Dry flat - ultramafic

### Dry Flats & Surficial

- Dry Flat Till (No Bedrock)
- Dry flat - coarse grained sediments
- Dry flat - fine grained sediments