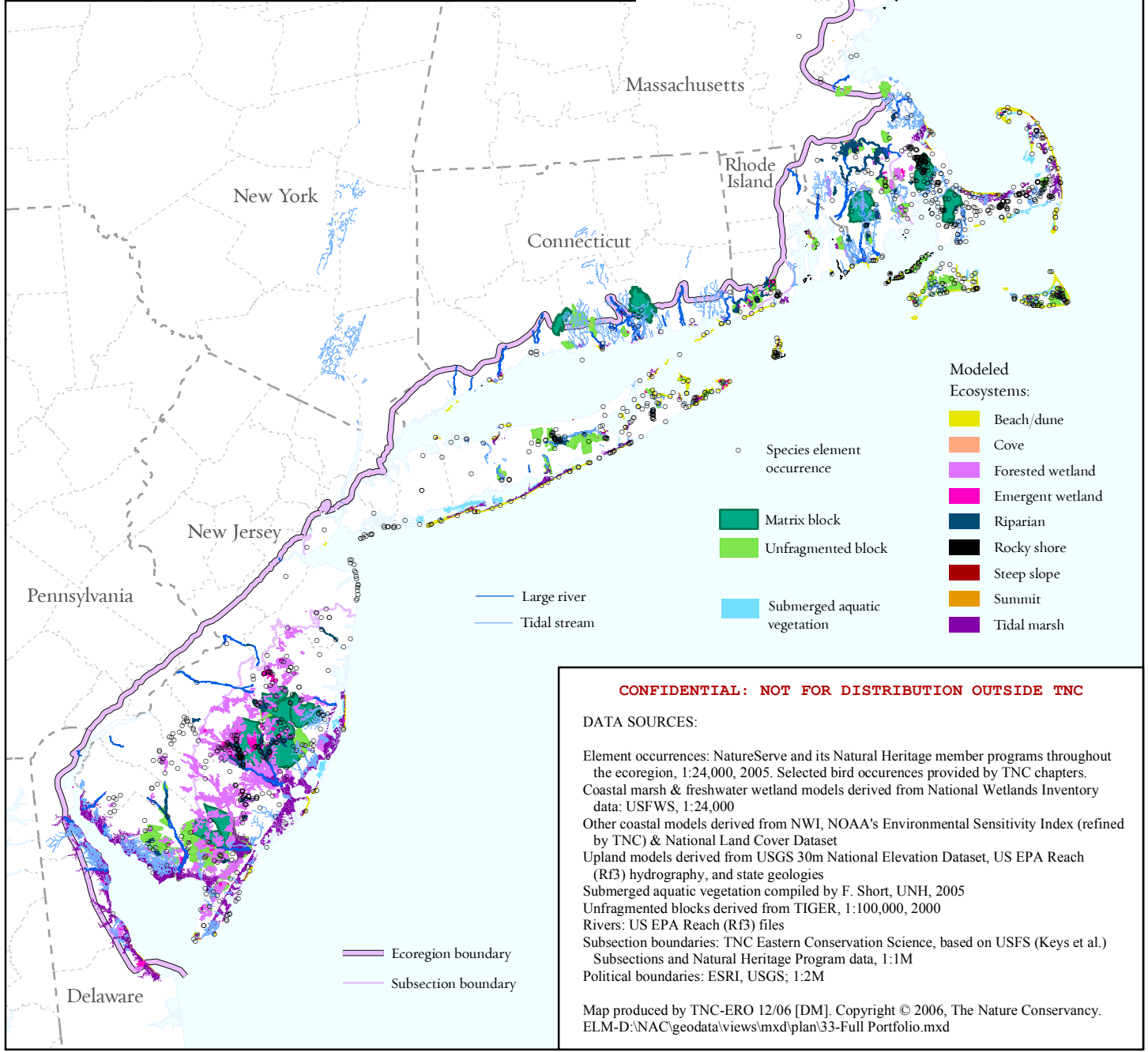
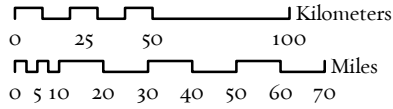


North Atlantic Coast Ecoregional Portfolio



DRAFT: 12/06

Scale 1 : 2,750,000



- Modeled Ecosystems:**
- Beach/dune
 - Cove
 - Forested wetland
 - Emergent wetland
 - Riparian
 - Rocky shore
 - Steep slope
 - Summit
 - Tidal marsh

○ Species element occurrence

Matrix block
 Unfragmented block

Submerged aquatic vegetation

Large river
 Tidal stream

Ecoregion boundary
 Subsection boundary

CONFIDENTIAL: NOT FOR DISTRIBUTION OUTSIDE TNC

DATA SOURCES:

Element occurrences: NatureServe and its Natural Heritage member programs throughout the ecoregion, 1:24,000, 2005. Selected bird occurrences provided by TNC chapters.

Coastal marsh & freshwater wetland models derived from National Wetlands Inventory data: USFWS, 1:24,000

Other coastal models derived from NWI, NOAA's Environmental Sensitivity Index (refined by TNC) & National Land Cover Dataset

Upland models derived from USGS 30m National Elevation Dataset, US EPA Reach (Rf3) hydrography, and state geologies

Submerged aquatic vegetation compiled by F. Short, UNH, 2005

Unfragmented blocks derived from TIGER, 1:100,000, 2000

Rivers: US EPA Reach (Rf3) files

Subsection boundaries: TNC Eastern Conservation Science, based on USFS (Keys et al.) Subsections and Natural Heritage Program data, 1:1M

Political boundaries: ESRI, USGS; 1:2M