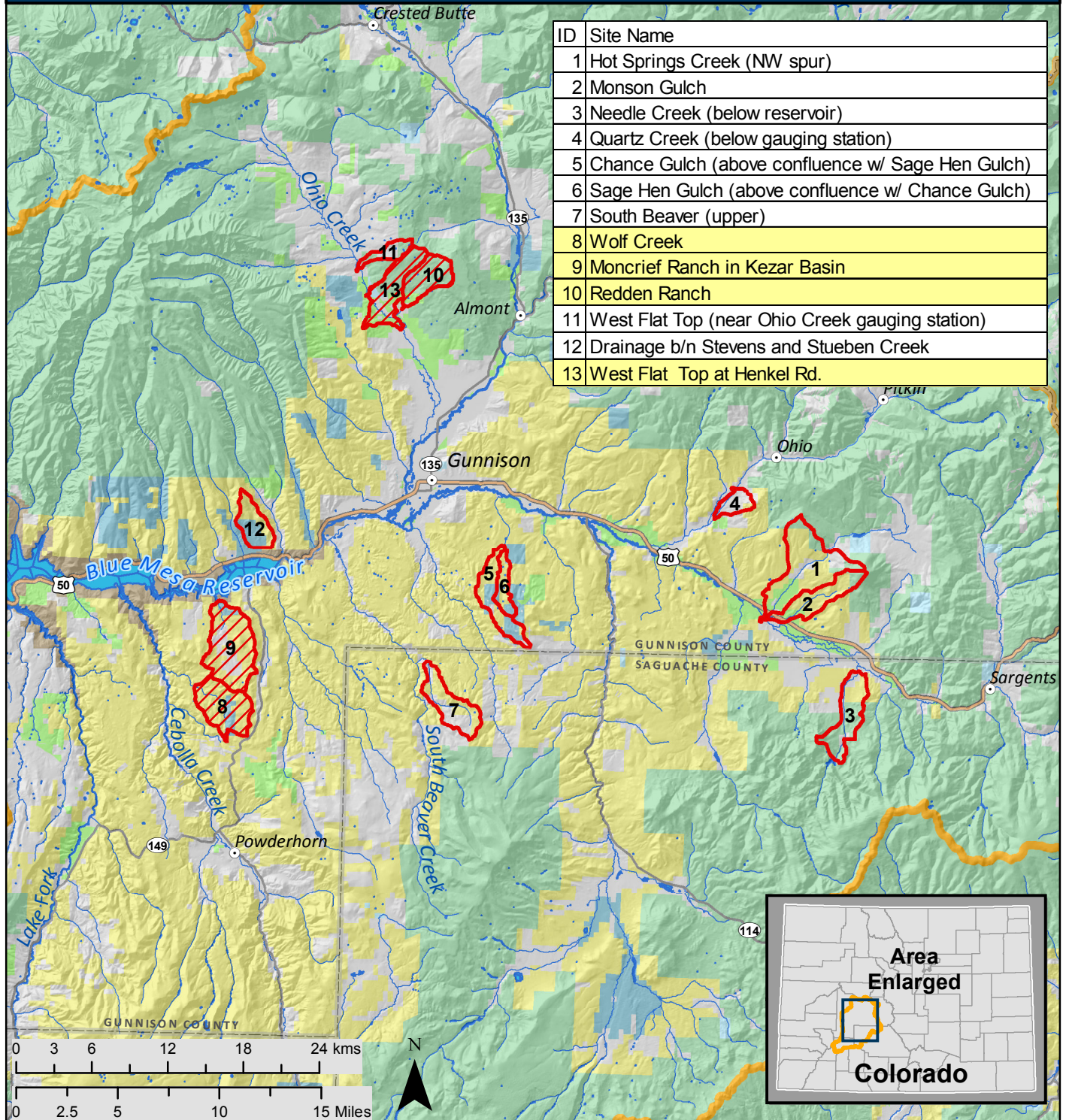







Priority Restoration Sites Upper Gunnison Basin







Gunnison Climate Working Group



ID	Site Name
1	Hot Springs Creek (NW spur)
2	Monson Gulch
3	Needle Creek (below reservoir)
4	Quartz Creek (below gauging station)
5	Chance Gulch (above confluence w/ Sage Hen Gulch)
6	Sage Hen Gulch (above confluence w/ Chance Gulch)
7	South Beaver (upper)
8	Wolf Creek
9	Moncrief Ranch in Kezar Basin
10	Redden Ranch
11	West Flat Top (near Ohio Creek gauging station)
12	Drainage b/n Stevens and Stueben Creek
13	West Flat Top at Henkel Rd.

Date: September 24, 2013
 Map by J. Robertson & T. Chapman.
 The Nature Conservancy.
 Scale: 1:450,000
 Sources: Land Ownership: COMaP v8 (CNHP 2010);
 Transportation and Counties (ESRI 2010);
 Rivers and Streams (NHD 2009).
 Map document:
 F_CO_GunnisonCC_PriorityCatchmentsMap8x11_20130910.mxd

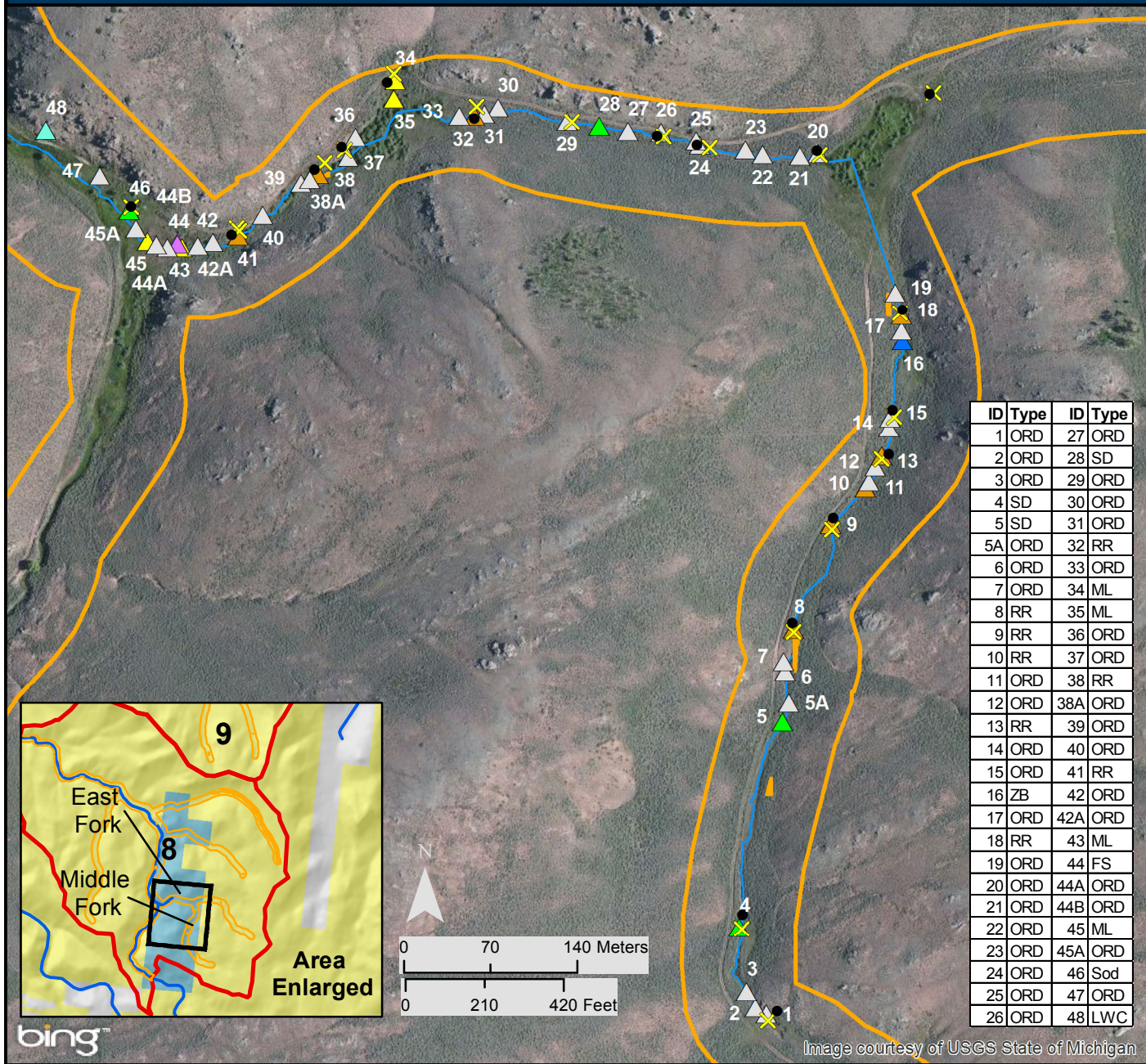
-  2012-2013 Priority Restoration Sites
-  Priority Restoration Sites
-  Upper Gunnison Basin

- Land Ownership
-  USFS
 -  CPW
 -  BLM
 -  State
 -  NPS
 -  Private



Wolf Creek Ranch (Private) - East Fork and Middle Fork Upper Gunnison Basin Restoration Structures and Monitoring

Gunnison Climate Working Group



ID	Type	ID	Type
1	ORD	27	ORD
2	ORD	28	SD
3	ORD	29	ORD
4	SD	30	ORD
5	SD	31	ORD
5A	ORD	32	RR
6	ORD	33	ORD
7	ORD	34	ML
8	RR	35	ML
9	RR	36	ORD
10	RR	37	ORD
11	ORD	38	RR
12	ORD	38A	ORD
13	RR	39	ORD
14	ORD	40	ORD
15	ORD	41	RR
16	ZB	42	ORD
17	ORD	42A	ORD
18	RR	43	ML
19	ORD	44	FS
20	ORD	44A	ORD
21	ORD	44B	ORD
22	ORD	45	ML
23	ORD	45A	ORD
24	ORD	46	Sod
25	ORD	47	ORD
26	ORD	48	LWC

Image courtesy of USGS State of Michigan

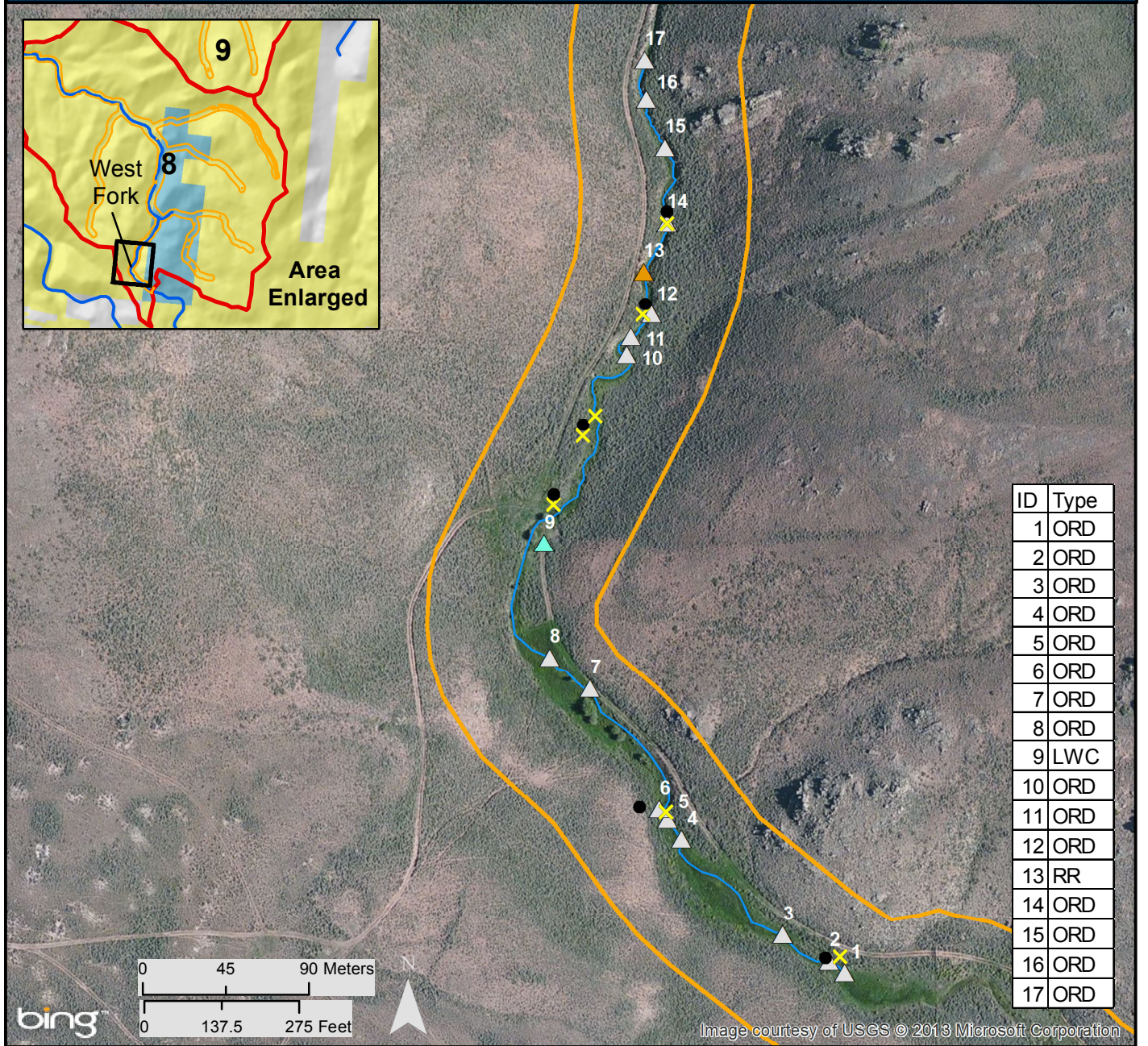
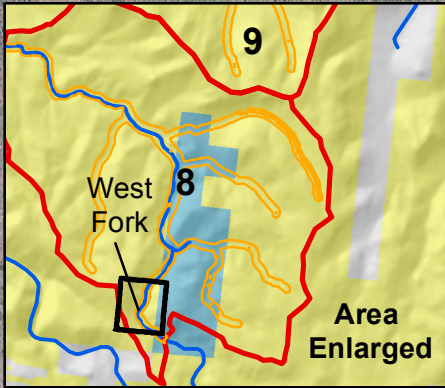
<ul style="list-style-type: none"> Priority Restoration Sites Gunnison Sage-Grouse Brood Rearing Habitat Streams 	<p>Monitoring</p> <ul style="list-style-type: none"> Photo Point Vegetation Transect 	<p>Structures</p> <ul style="list-style-type: none"> One Rock Dam (ORD) Rock Rundown (RR) Media Luna (ML) Zuni Bowl (ZB) Flow Splitter (FS) Low Water Crossing (LWC) Sod Dams (Sod) Steel Dam (SD) 	<p>Land Management</p> <ul style="list-style-type: none"> USFS BLM NPS CPW State Private
--	---	---	---

Date: 9/24/2013. Map by T. Chapman, The Nature Conservancy.
 Scale: 1:5,000
 Sources: Bing Maps Aerial Imagery (ESRI online);
 Gunnison Basin Gunnison Sage-grouse Habitat Prioritization Tool (2012).
 Map document:
 F_Gunnison_PrioritySites8_Wolf_Creek_Ranch__Structures_2013_8x11_201309.mxd



Wolf Creek (BLM) West Fork Upper Gunnison Basin Restoration Structures and Monitoring

Gunnison Climate Working Group



ID	Type
1	ORD
2	ORD
3	ORD
4	ORD
5	ORD
6	ORD
7	ORD
8	ORD
9	LWC
10	ORD
11	ORD
12	ORD
13	RR
14	ORD
15	ORD
16	ORD
17	ORD

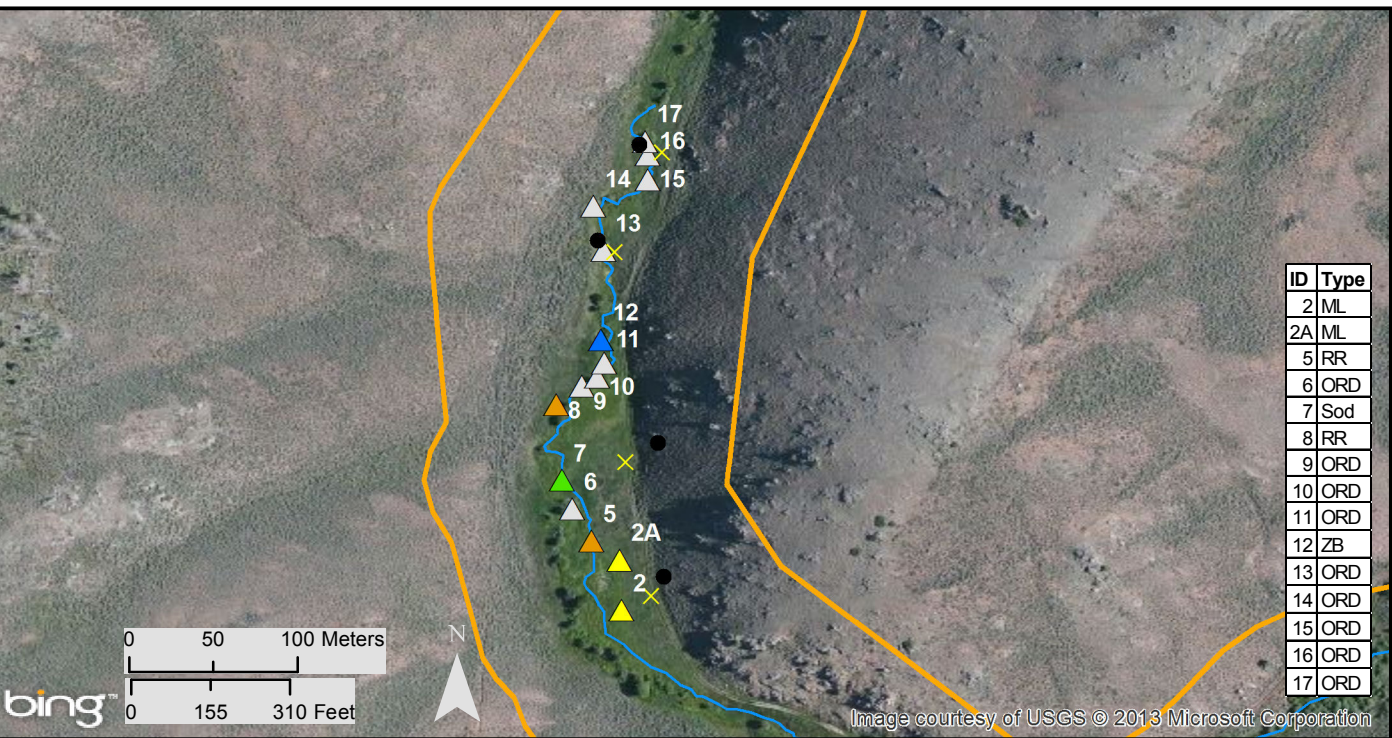
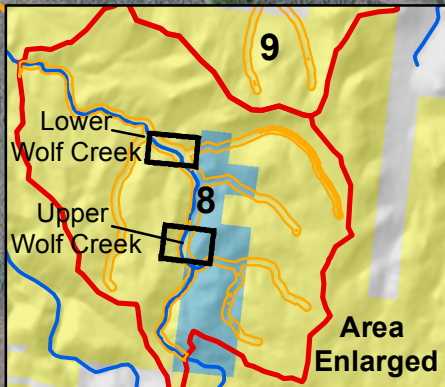
Priority Restoration Sites	Monitoring	Structures	Land Management
Gunnison Sage-Grouse Brood Rearing Habitat	Photo Point	One Rock Dam (ORD)	USFS
Streams	Vegetation Transect	Rock Rundown (RR)	BLM
		Low Water Crossing (LWC)	NPS
			CPW
			State
			Private

Date: 9/24/2013. Map by T. Chapman, The Nature Conservancy.
 Scale: 1:3,300
 Sources: Bing Maps Aerial Imagery (ESRI online);
 Gunnison Basin Gunnison Sage-grouse Habitat Prioritization Tool (2012).
 Map document:
 F_Gunnison_PrioritySites8_Wolf_Creek_Ranch_WestFork_Structures_2013_8x11_201309.mxd



Wolf Creek (BLM) - Lower and Upper Wolf Creek Upper Gunnison Basin Restoration Structures and Monitoring

Gunnison Climate Working Group



Priority Restoration Sites	Monitoring	Structures	Land Management
Gunnison Sage-Grouse Brood Rearing Habitat	Photo Point	One Rock Dam (ORD)	USFS
Streams	Vegetation Transect	Rock Rundown (RR)	BLM
	Time Lapse Camera	Media Luna (ML)	NPS
		Zuni Bowl (ZB)	CPW
		Sod	State
		Layback (LB)	Private

Date: 9/24/2013. Map by T. Chapman.
 The Nature Conservancy.
 Scale: 1:3,500 and 1:4,500
 Sources: Bing Maps Aerial Imagery (ESRI online);
 Gunnison Basin Gunnison Sage-grouse Habitat Prioritization Tool (2012).
 Map document:
 Gunnison_PrioritySites8_Wolf_Creek_BLM_Structures_2013_8x11_201309F.mxd

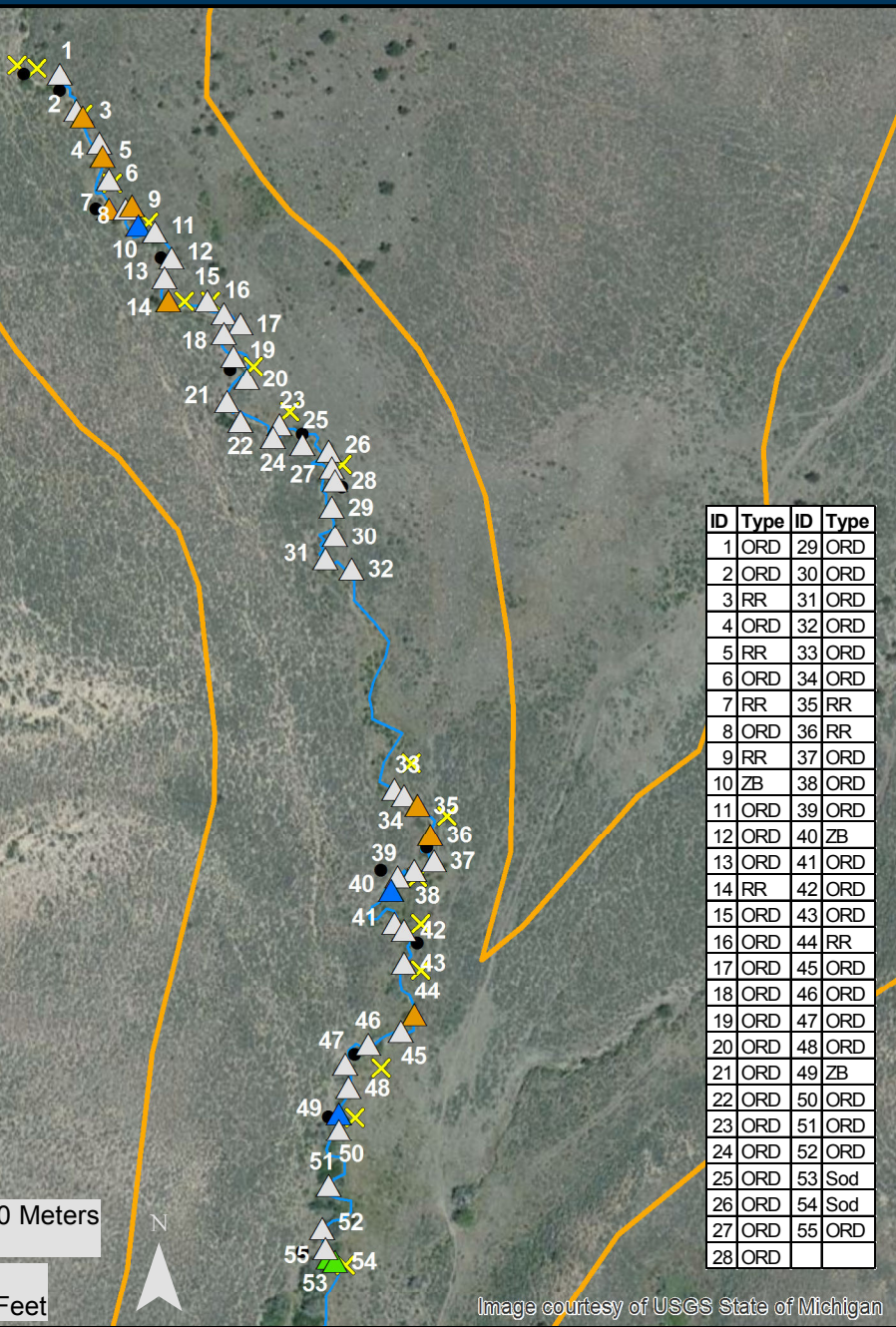
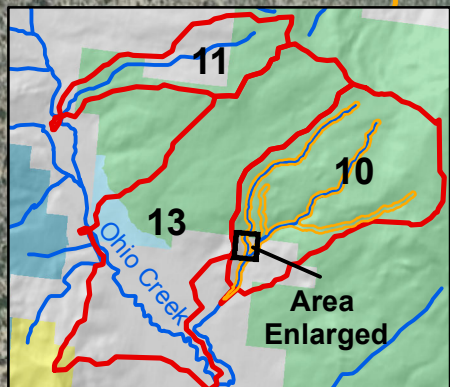
Image courtesy of USGS © 2013 Microsoft Corporation

Image courtesy of USGS © 2013 Microsoft Corporation



Redden Ranch (Private) Upper Gunnison Basin Restoration Structures and Monitoring

Gunnison Climate Working Group



ID	Type	ID	Type
1	ORD	29	ORD
2	ORD	30	ORD
3	RR	31	ORD
4	ORD	32	ORD
5	RR	33	ORD
6	ORD	34	ORD
7	RR	35	RR
8	ORD	36	RR
9	RR	37	ORD
10	ZB	38	ORD
11	ORD	39	ORD
12	ORD	40	ZB
13	ORD	41	ORD
14	RR	42	ORD
15	ORD	43	ORD
16	ORD	44	RR
17	ORD	45	ORD
18	ORD	46	ORD
19	ORD	47	ORD
20	ORD	48	ORD
21	ORD	49	ZB
22	ORD	50	ORD
23	ORD	51	ORD
24	ORD	52	ORD
25	ORD	53	Sod
26	ORD	54	Sod
27	ORD	55	ORD
28	ORD		

Priority Restoration Sites

Gunnison Sage-Grouse Brood Rearing Habitat

Streams

Monitoring

Photo Point

Vegetation Transect

Structure

One Rock Dam (ORD)

Rock Rundown (RR)

Zuni Bowl (ZB)

Sod

Land Management

USFS

BLM

NPS

CPW

State

Private

Date: 9/24/2013. Map by T. Chapman, The Nature Conservancy. Scale: 1:2,300
Sources: Bing Maps Aerial Imagery (ESRI online); Gunnison Basin Gunnison Sage-grouse Habitat Prioritization Tool (2012).
Map document: Gunnison_PrioritySites10_ReddenRanch_Structures_2013_8x11_201309F2.mxd

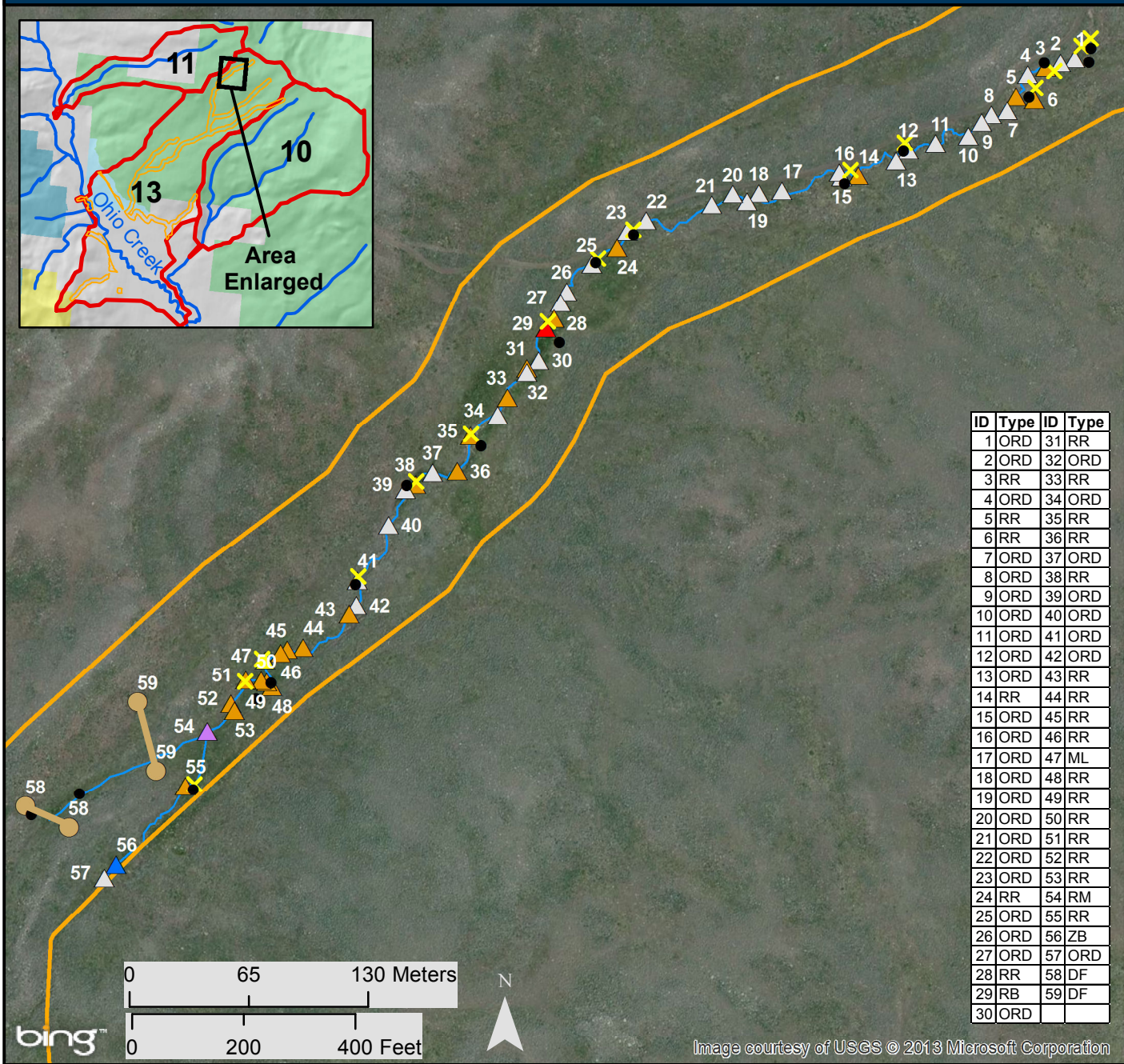
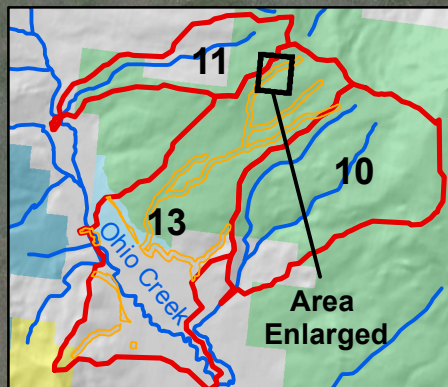


West Flat Top at Henkel Road - Section 36 (USFS)

Upper Gunnison Basin

Restoration Structures and Monitoring

Gunnison Climate Working Group



ID	Type	ID	Type
1	ORD	31	RR
2	ORD	32	ORD
3	RR	33	RR
4	ORD	34	ORD
5	RR	35	RR
6	RR	36	RR
7	ORD	37	ORD
8	ORD	38	RR
9	ORD	39	ORD
10	ORD	40	ORD
11	ORD	41	ORD
12	ORD	42	ORD
13	ORD	43	RR
14	RR	44	RR
15	ORD	45	RR
16	ORD	46	RR
17	ORD	47	ML
18	ORD	48	RR
19	ORD	49	RR
20	ORD	50	RR
21	ORD	51	RR
22	ORD	52	RR
23	ORD	53	RR
24	RR	54	RM
25	ORD	55	RR
26	ORD	56	ZB
27	ORD	57	ORD
28	RR	58	DF
29	RB	59	DF
30	ORD		

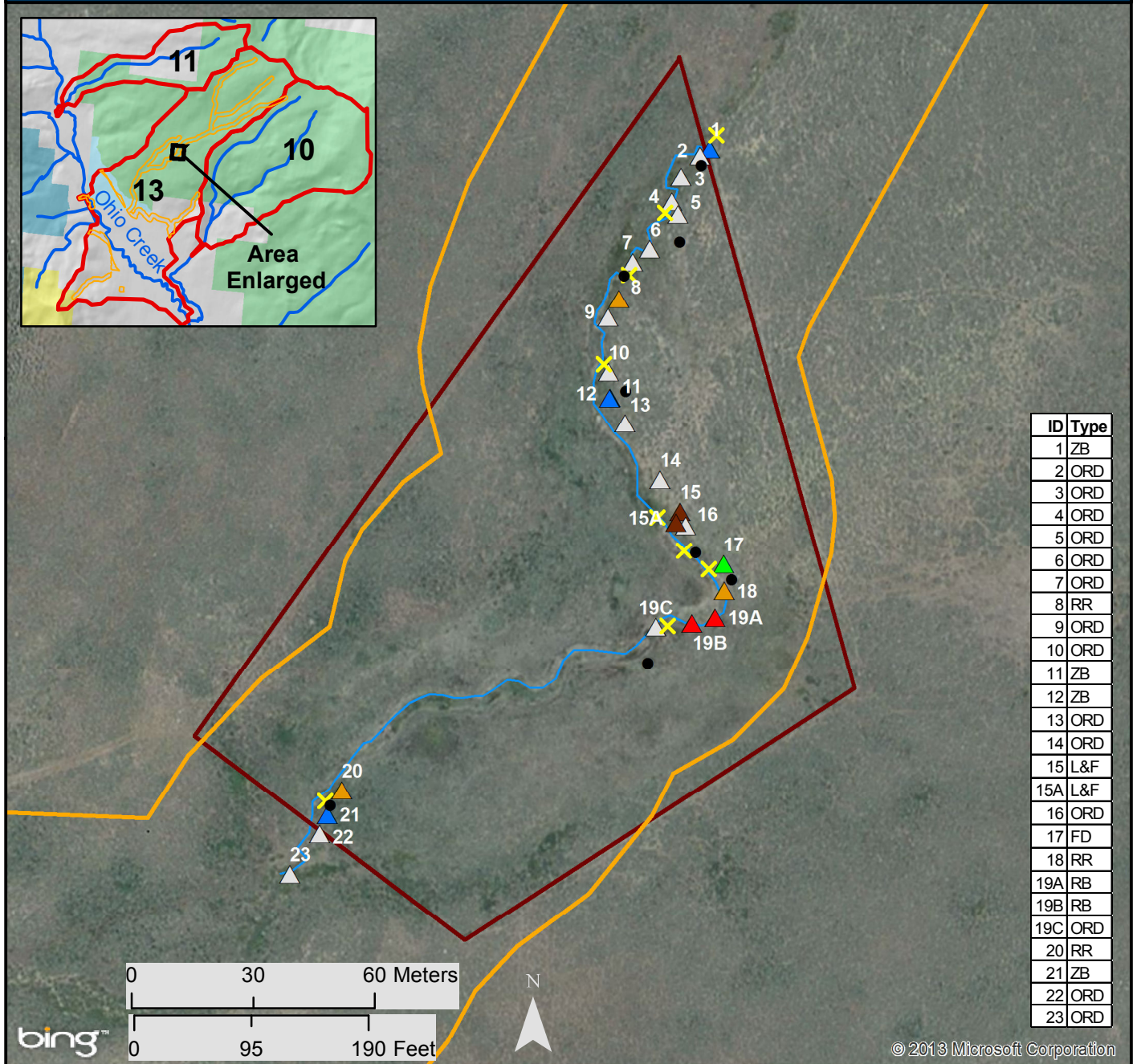
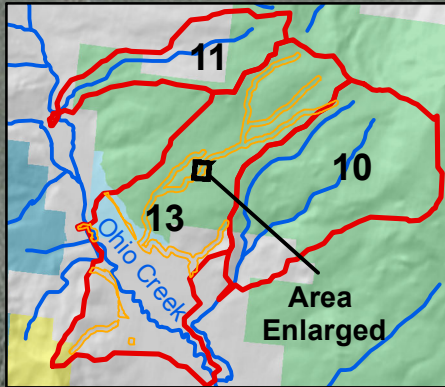
<ul style="list-style-type: none"> Priority Restoration Sites Gunnison Sage-Grouse Brood Rearing Habitat Streams 	<p>Monitoring</p> <ul style="list-style-type: none"> Photo Point Vegetation Transect 	<p>Structures</p> <ul style="list-style-type: none"> One Rock Dam (ORD) Rock Rundown (RR) Media Luna (ML) Zuni Bowl (ZB) Rock Mulch (RM) Rock Baffle (RB) Drift Fence (DF) 	<p>Land Management</p> <ul style="list-style-type: none"> USFS BLM NPS CPW State Private
--	---	---	---

Date: 9/24/2013. Map by T. Chapman, The Nature Conservancy.
 Scale: 1:3,300
 Sources: Bing Maps Aerial Imagery (ESRI online);
 Gunnison Basin Gunnison Sage-grouse Habitat Prioritization Tool (2012).
 Map document: Gunnison_PrioritySites13_Section36_WestFlatTopatHenkelRoad_Structures_2013_8x11_201309F.mxd

Image courtesy of USGS © 2013 Microsoft Corporation

West Flat Top at Henkel Road - Exclosure (USFS), Upper Gunnison Basin Restoration Structures and Monitoring

Gunnison Climate Working Group



ID	Type
1	ZB
2	ORD
3	ORD
4	ORD
5	ORD
6	ORD
7	ORD
8	RR
9	ORD
10	ORD
11	ZB
12	ZB
13	ORD
14	ORD
15	L&F
15A	L&F
16	ORD
17	FD
18	RR
19A	RB
19B	RB
19C	ORD
20	RR
21	ZB
22	ORD
23	ORD

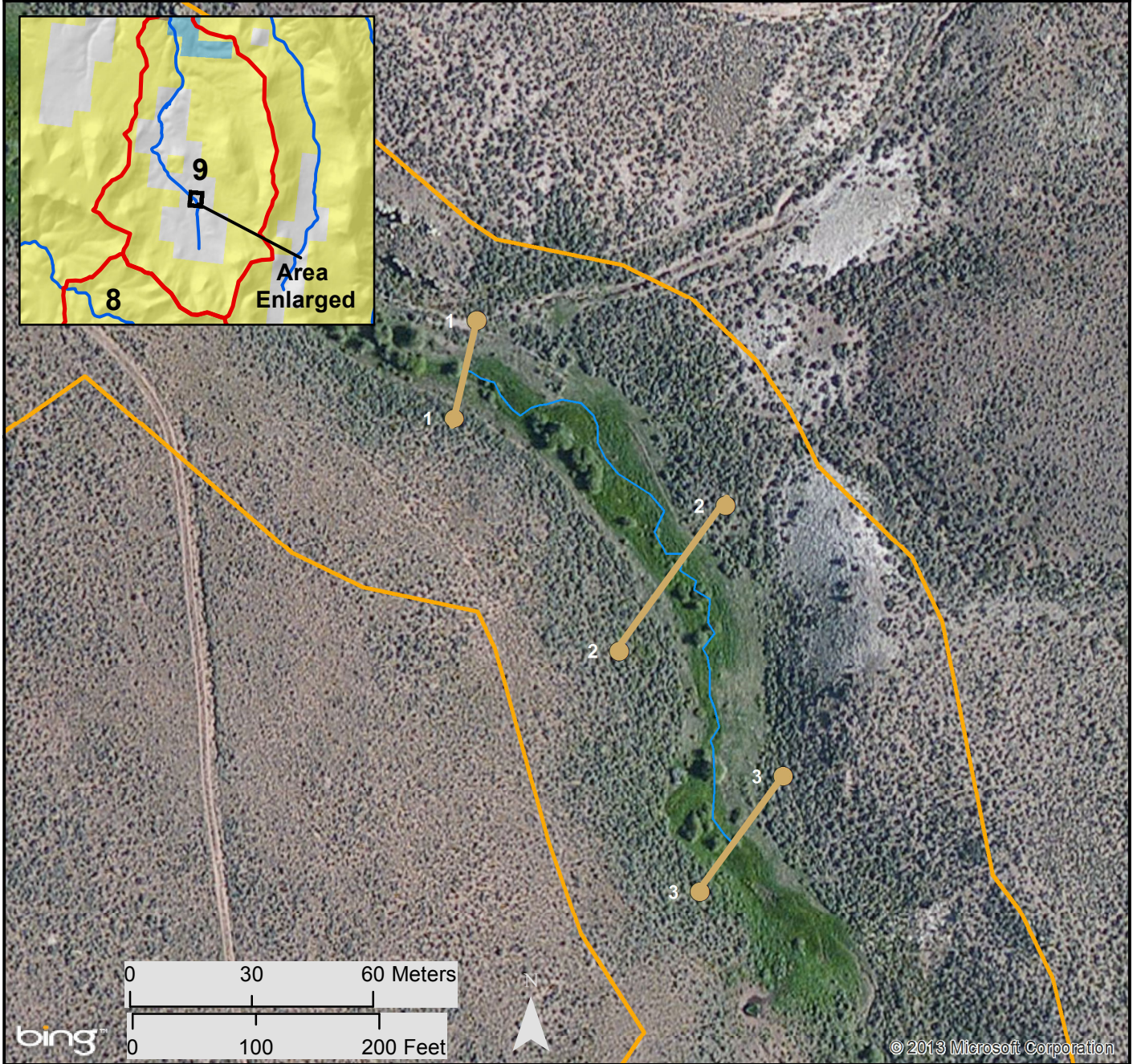
© 2013 Microsoft Corporation

Priority Restoration Sites	Monitoring	Structures	Land Management
Gunnison Sage-Grouse Brood Rearing Habitat	Photo Point	One Rock Dam (ORD)	USFS
Streams	Vegetation Transect	Rock Rundown (RR)	BLM
Exclosure		Media Luna (ML)	NPS
		Zuni Bowl (ZB)	CPW
		Log and Fabric (L&F)	State
		Rock Baffle (RB)	Private
		Filter Dam (FD)	

Date: 9/24/2013. Map by T. Chapman, The Nature Conservancy. Scale: 1:1,500
Sources: Bing Maps Aerial Imagery (ESRI online);
Gunnison Basin Gunnison Sage-grouse Habitat Prioritization Tool (2012).
Map document: Gunnison_PrioritySites13_Exclosure_WestFlatTopatHenkel
Road_Structures_2013_8x11_201309F.mxd

Moncrief Ranch in Kezar Basin Upper Gunnison Basin Restoration Structures and Monitoring

Gunnison Climate Working Group



<ul style="list-style-type: none"> Priority Restoration Sites Gunnison Sage-Grouse Brood Rearing Habitat Streams 	<p>Monitoring</p> <ul style="list-style-type: none"> Photo Point Vegetation Transect 	<p>Structures</p> <ul style="list-style-type: none"> Drift Fence (DF) 	<p>Land Management</p> <ul style="list-style-type: none"> USFS BLM NPS CPW State Private
--	---	--	---

Date: 9/24/2013. Map by T. Chapman, The Nature Conservancy. Scale: 1:1,500
 Sources: Bing Maps Aerial Imagery (ESRI online);
 Gunnison Basin Gunnison Sage-grouse Habitat Prioritization Tool (2012).
 Map document: Gunnison_PrioritySites13_Exclosure_WestFlatTopatHenkel
 Road_Structures_2013_8x11_201309F.mxd