



Ecological Condition of the Lower 48 States



Kori Blankenship



Kori Blankenship

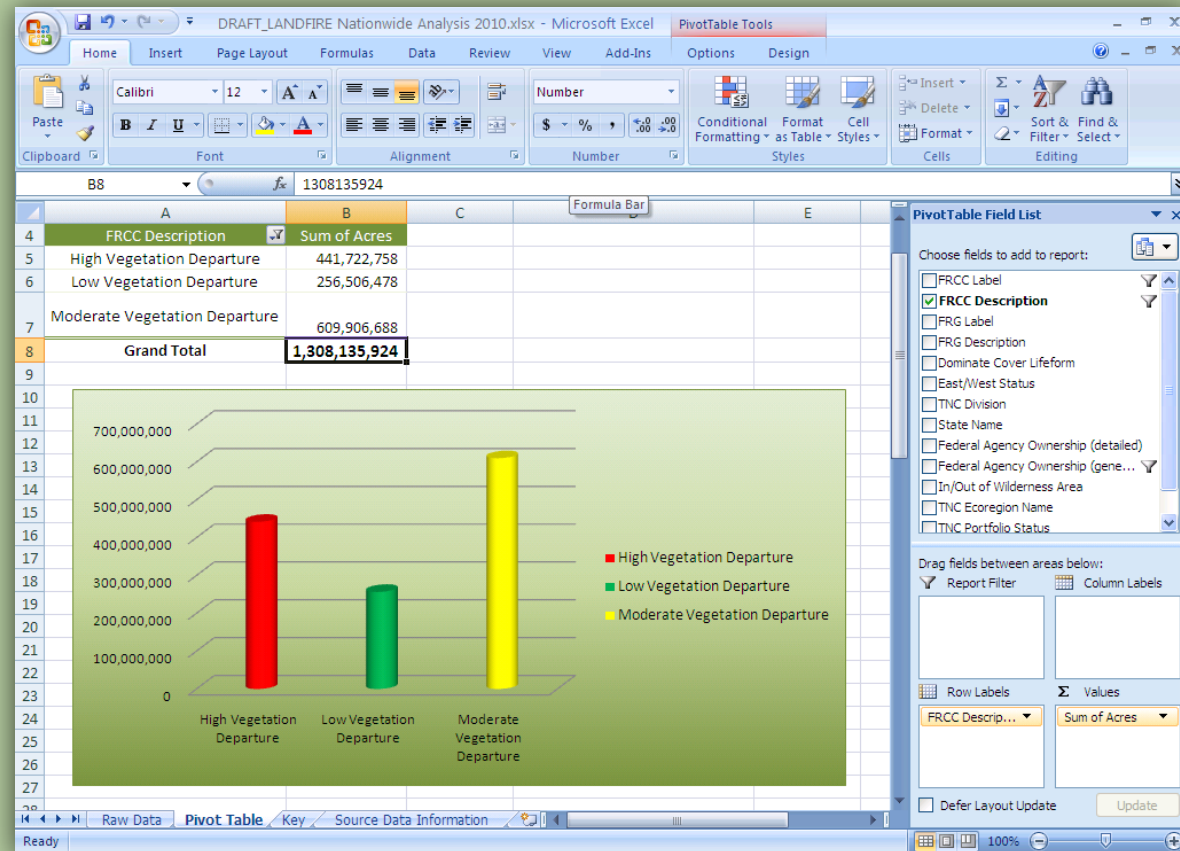


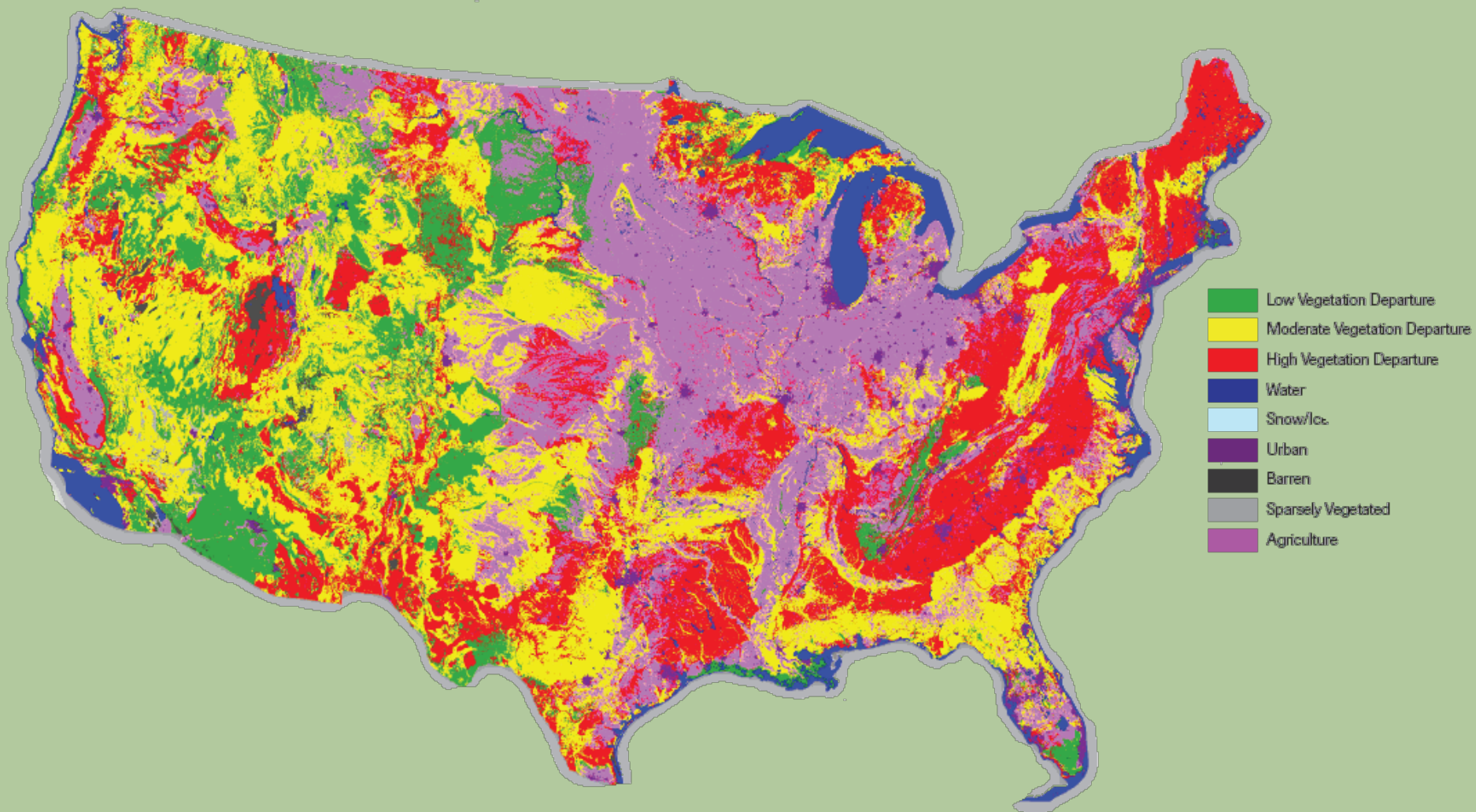
Wendy Fulker

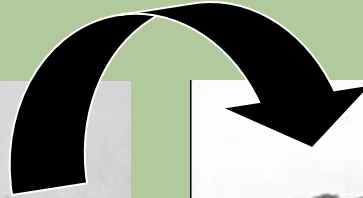
Why develop this product?

Who's the user?

Why a pivot table?



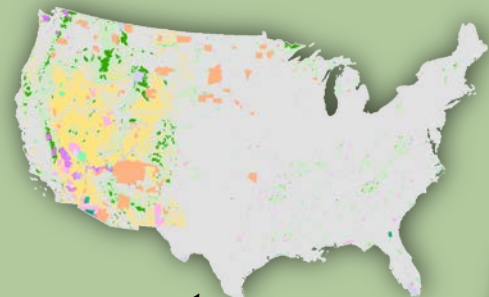




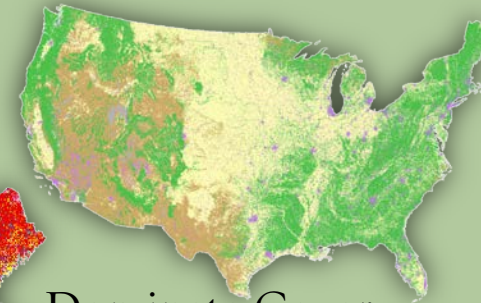
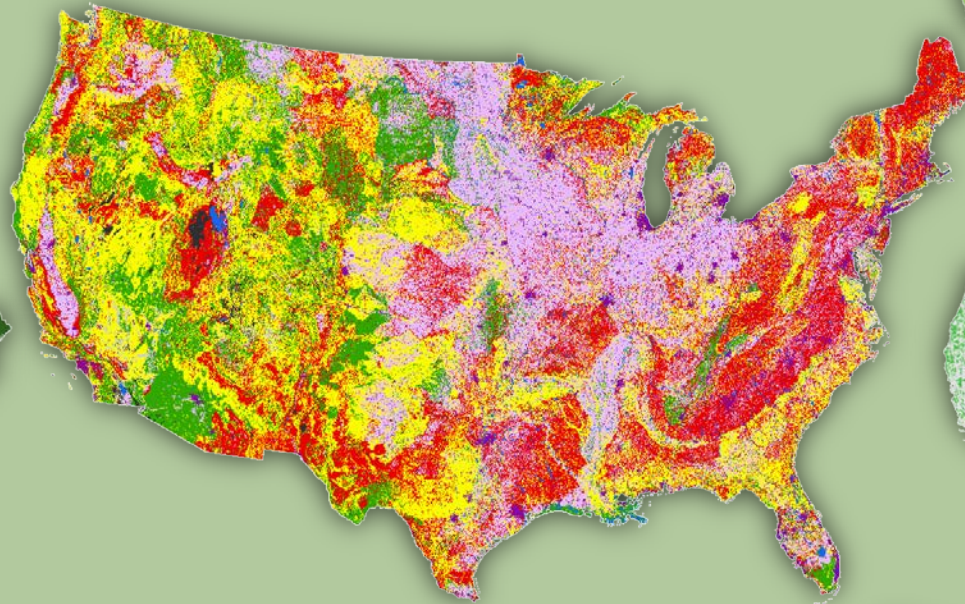
Class	Departure	Name
1	0-33%	Low
2	34-66%	Moderate
3	67-100%	High

(aka fire regime condition class)

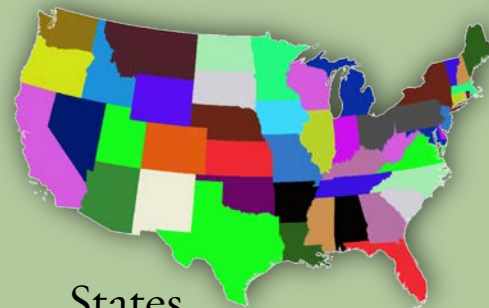
Ecological Departure



Ownership



Dominate Cover
Lifeform



States



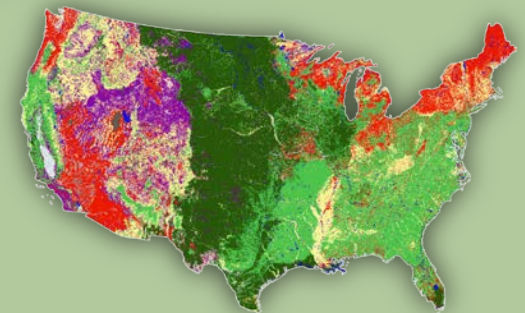
TNC Portfolio Sites



TNC Divisions

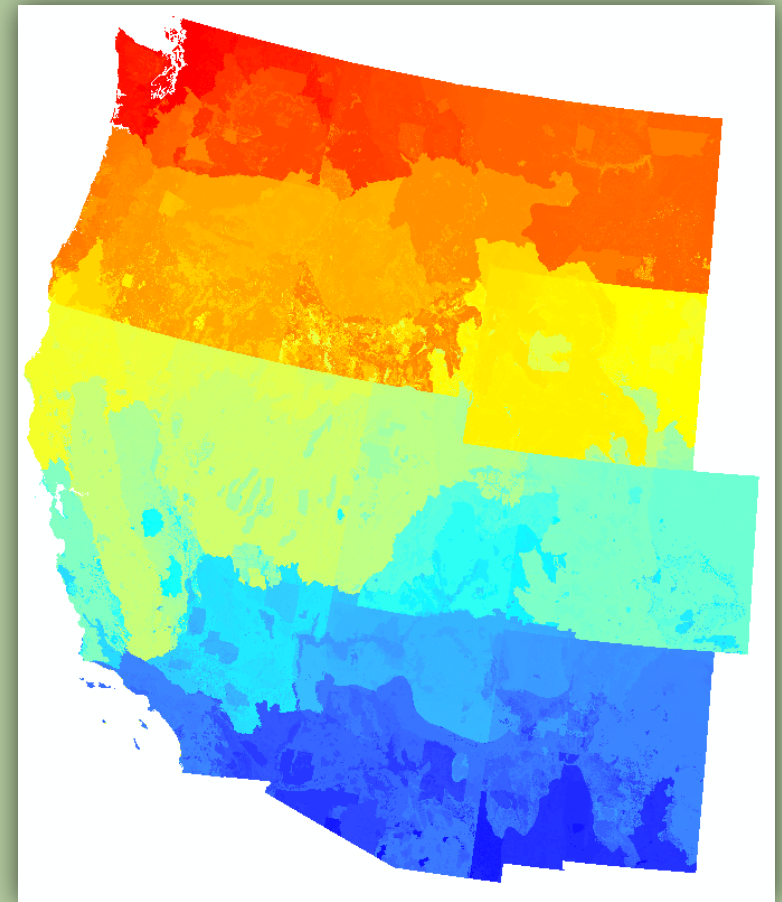
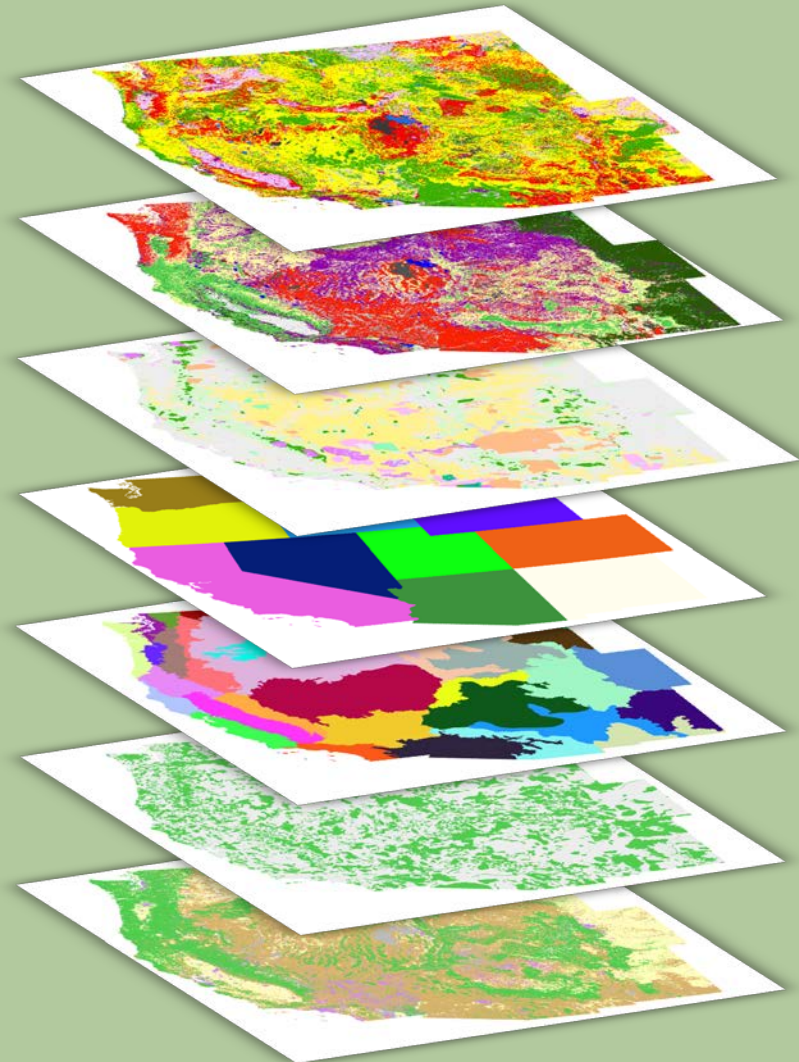


TNC Ecoregions

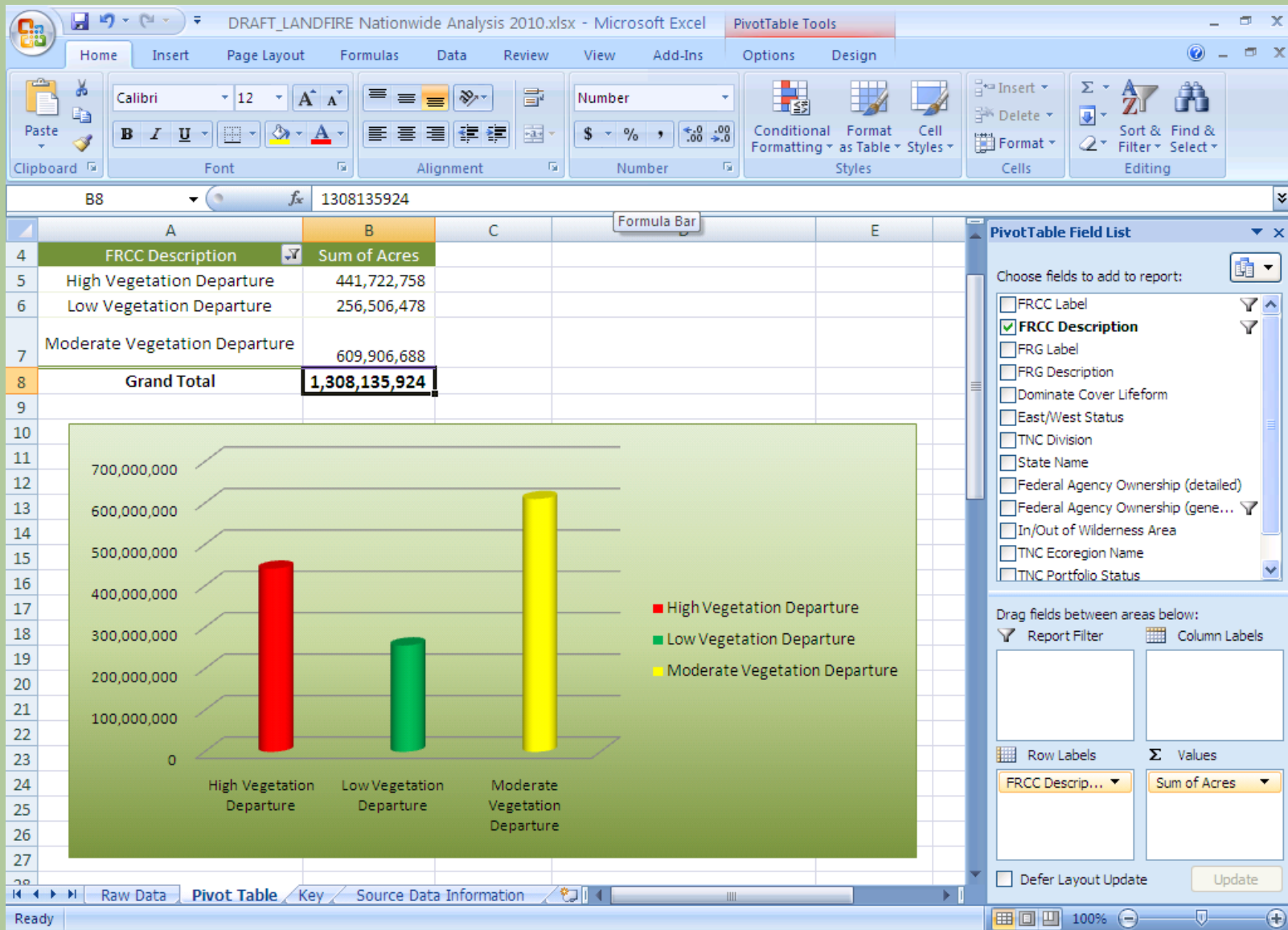


Fire Regime Groups

Data & Methods

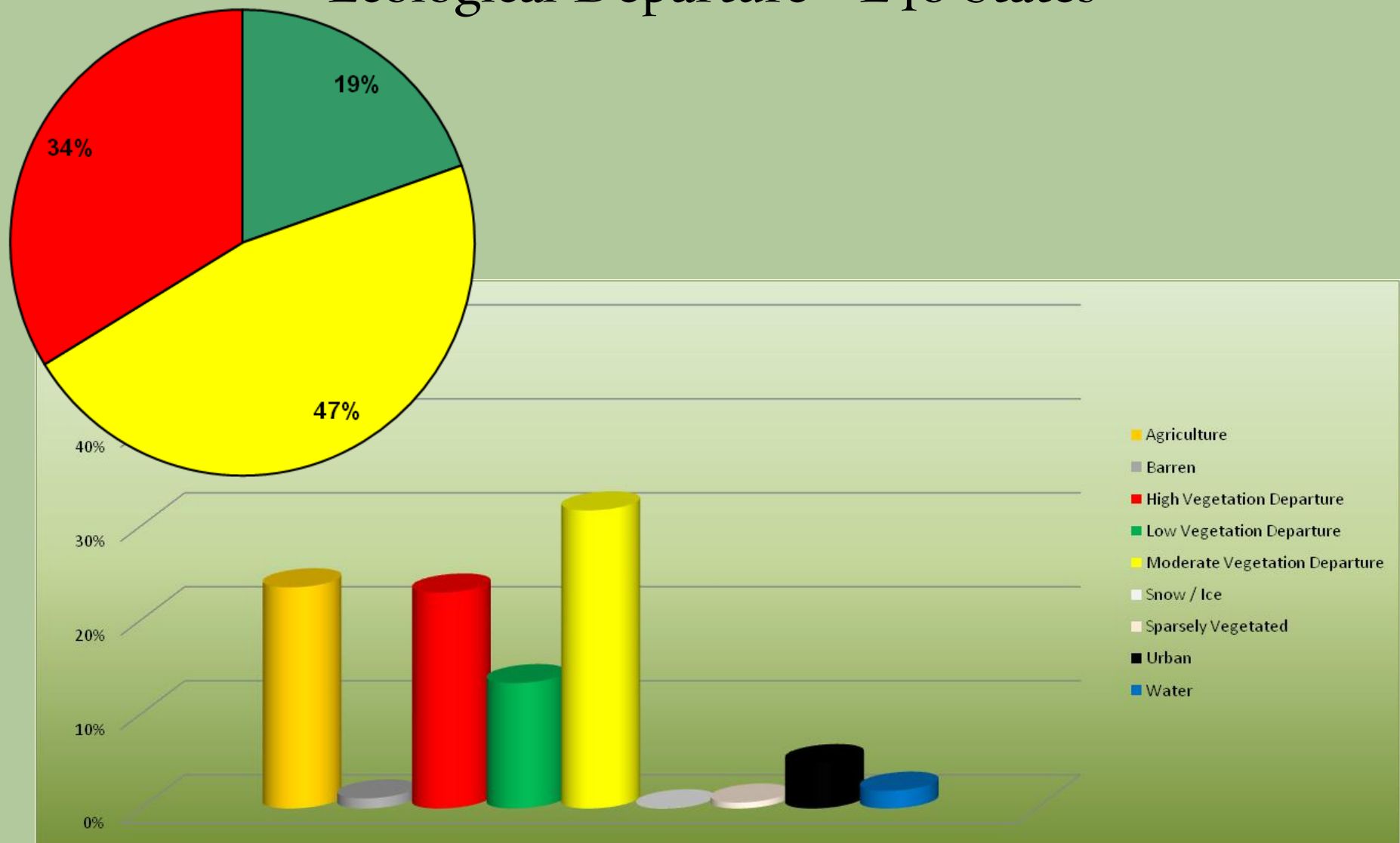


Results



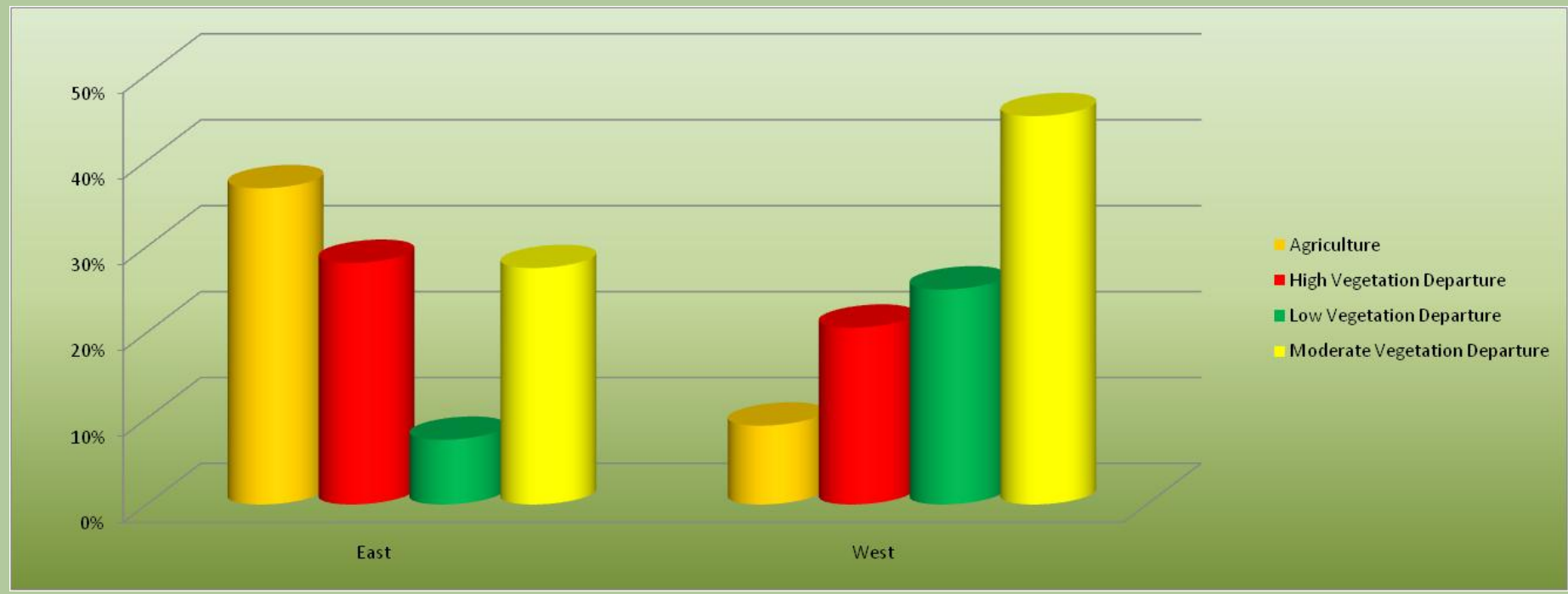


Ecological Departure - L48 States



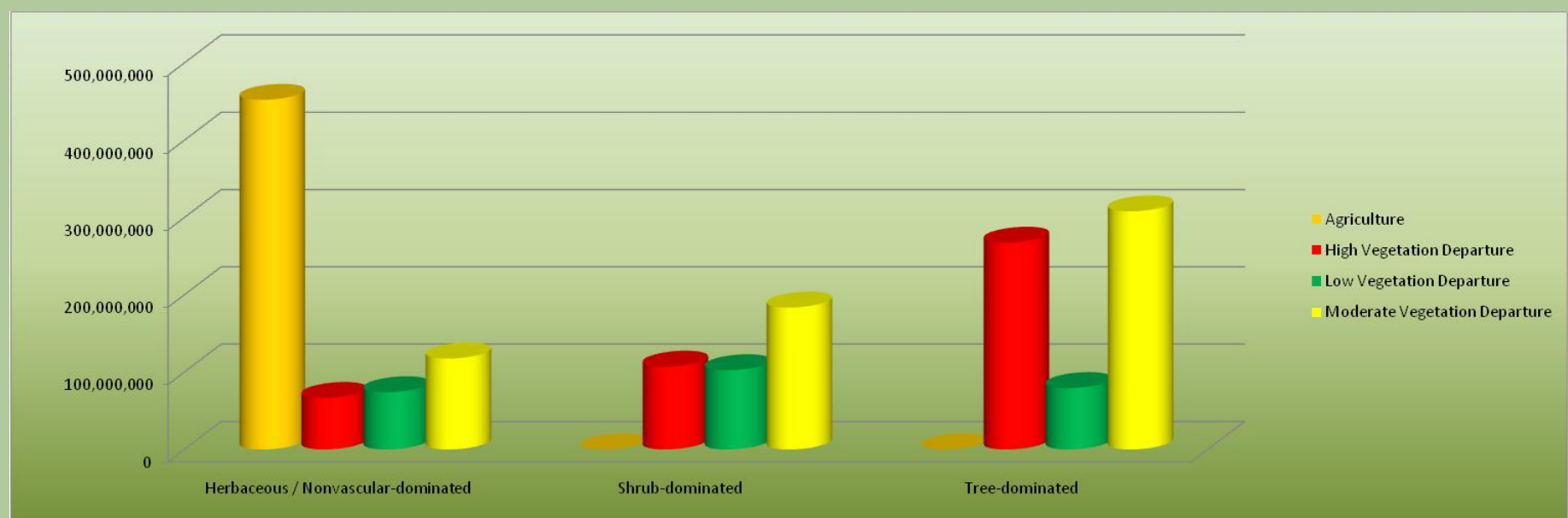


Ecological Departure – East vs. West



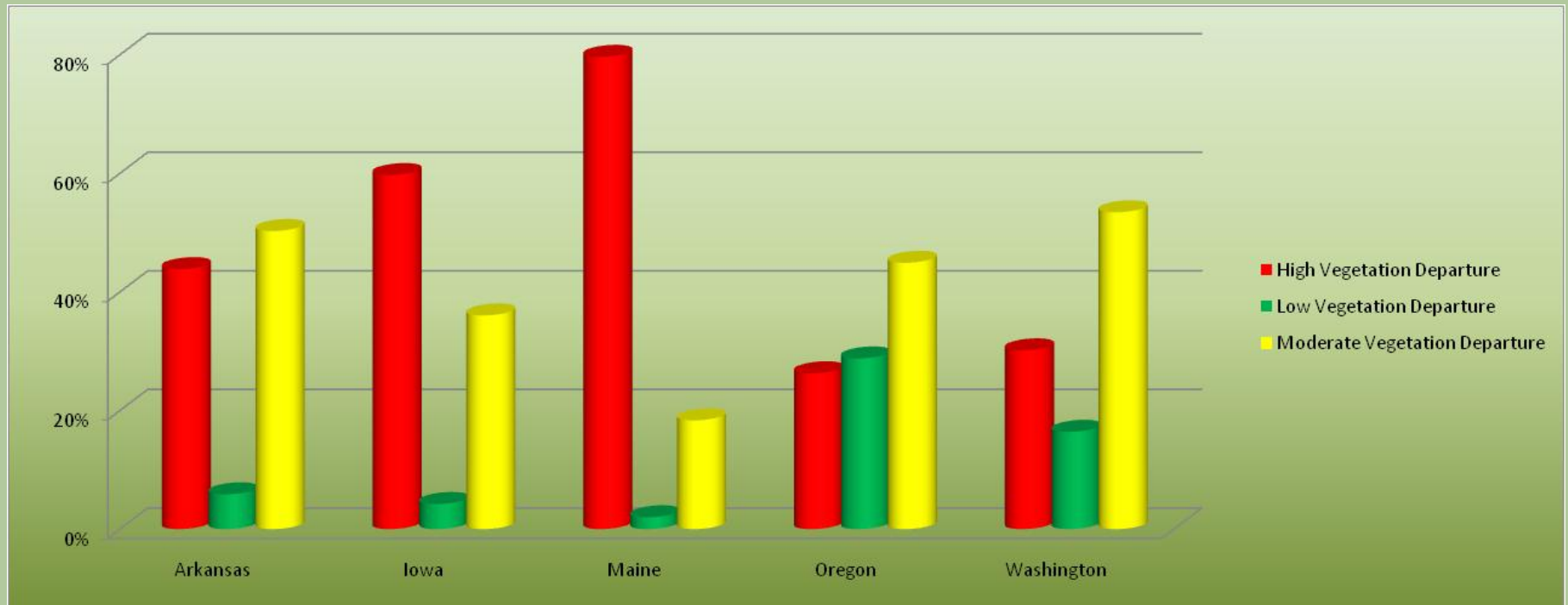


Ecological Departure – Herb vs. Shrub vs. Tree



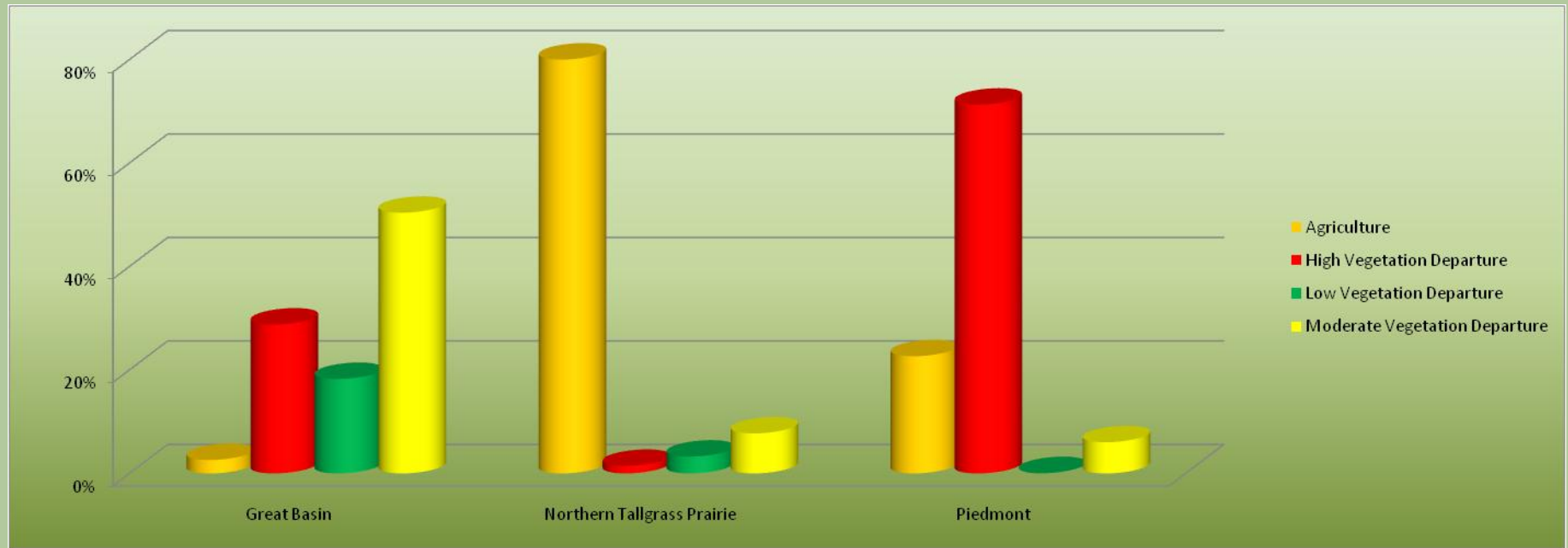


Ecological Departure – Selected States



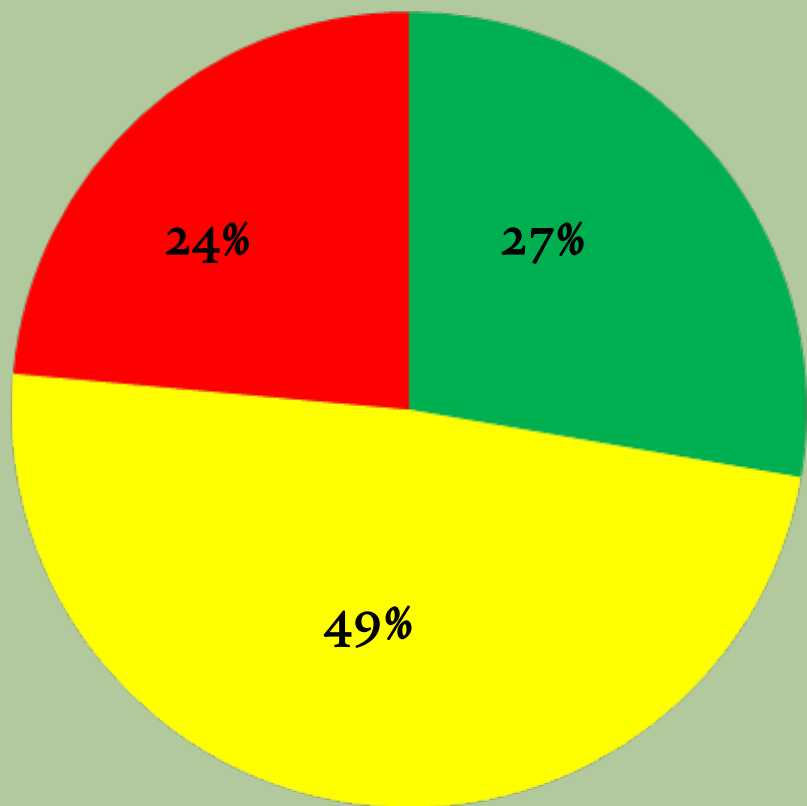


Ecological Departure – Selected Ecoregions

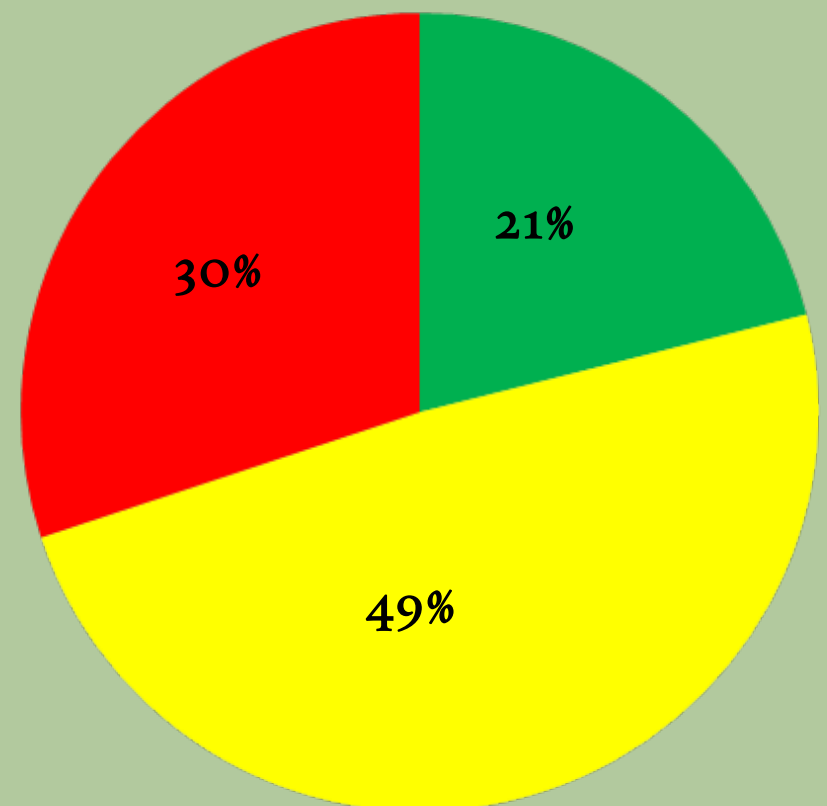




Ecological Departure – Federal & Portfolio Lands



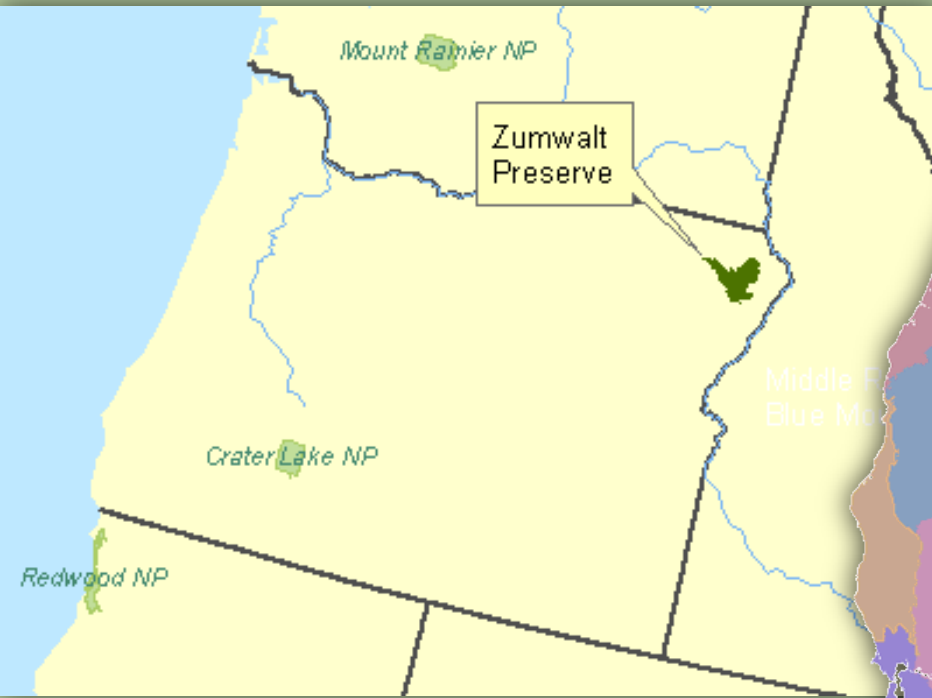
Federal Lands



Portfolio

■ Low Vegetation Departure ■ Moderate Vegetation Departure ■ High Vegetation Departure

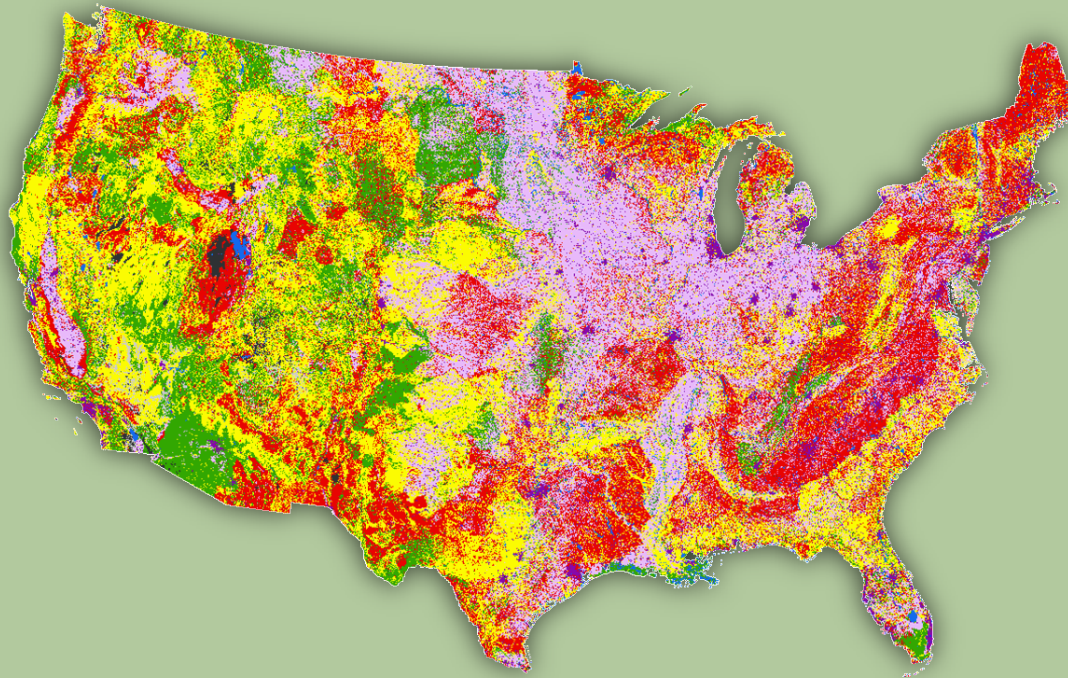
Appropriate Use



Zumwalt Preserve ~ 33, 000 Ac.

Middle Rockies Blue Mtns. Ecoregion ~
50 million Acres

Take Home Messages

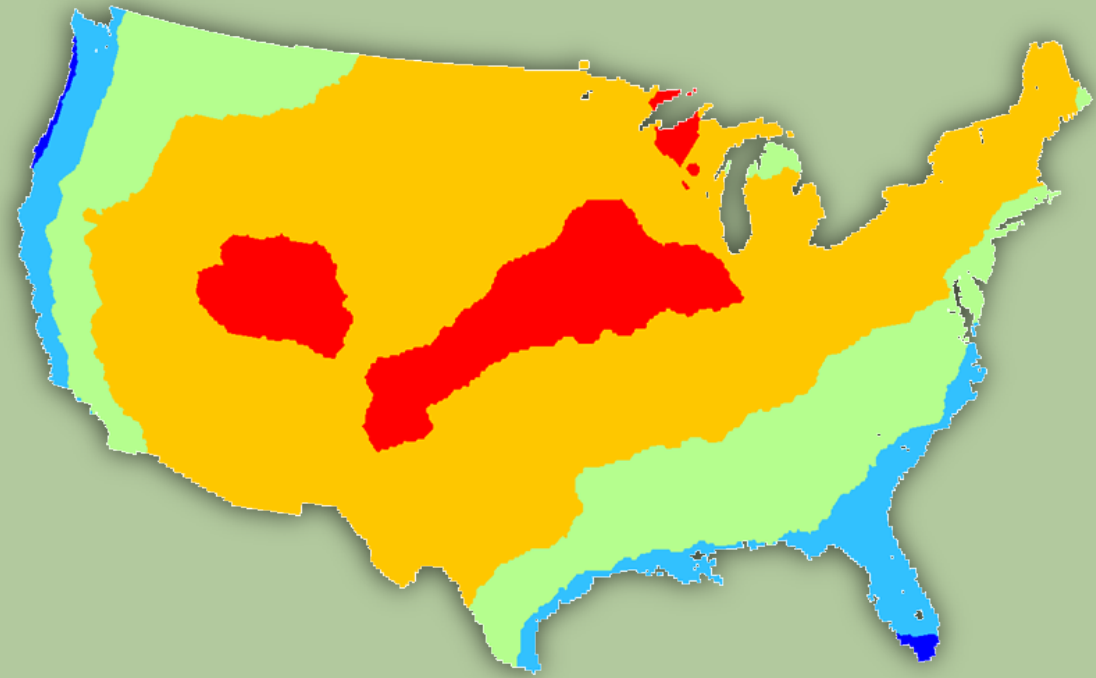


- Ecological conditions in L48 are highly departed
- Useful tool for evaluating program and policy decisions at the state, regional & national level.



Leveraging this Analysis

- Climate Change
- Wildland Fire Policy
- Conservation Risk
- Evaluation and Context to TNC programs: ie, Fire in the West – TNC Fire program analysis.





For More Information...

Contact: Jim Smith, TNC Project Manager – LANDFIRE
Jim_Smith@tnc.org



Questions, Thoughts Comments



Kori Blankenship



Kori Blankenship



Wendy Fulks