

LANDFIRE's Office Hour - REGISTER

LANDFIRE

● NEWS ●



[View email in browser](#)

[Newsletter PDF](#)

[Forward to a friend](#)

LANDFIRE News:

- LANDFIRE Listens: Hurricane Helene disturbance included in PDist
- New Pub: Changing Fire Regimes in the Great Basin (and story map)
- Check out the 22 landscapes that are using LANDFIRE Products in their assessments
- Office Hour: The use of LANDFIRE data in the Wildland Fire Decision Support System (WFDSS) & Hands-on working session (after the Office Hour)
- Do you script to the LFPS API? We're updating it. Learn more below.

LANDFIRE

● RESPONDS ●

Welcome to this series where we communicate how LANDFIRE responds to the changing needs of users.

Challenge: Hurricane Helene's landfall during the final days of the 2024 fiscal year

challenged LANDFIRE to capture the resulting disturbance(s) in time for the LF 2024 Preliminary Disturbance (PDist) Product release.

Solution: With the PDist release just months away, LANDFIRE moved quickly and was able to include Hurricane Helene disturbance event data in the 2024 release.

[Learn what it took to make that happen.](#)

Right: Blowdown from Hurricane Helene in the Dillingham Creek watershed on Locust Ridge from the Blue Ridge Parkway.
Nov. 21, 2024



**READ the
story**

As always, the LANDFIRE Team wants to hear from you. Have feedback? [Let us know.](#)

Changing Fire Regimes in the Great Basin, USA

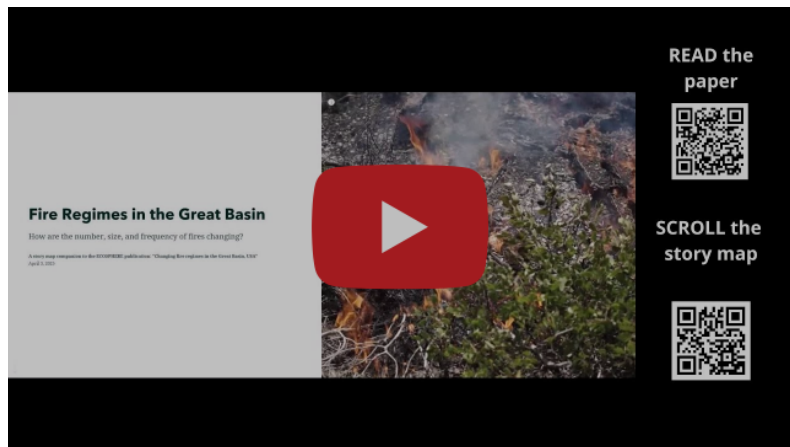
Read the publication

Scroll the Story Map

New Pub. Alert:

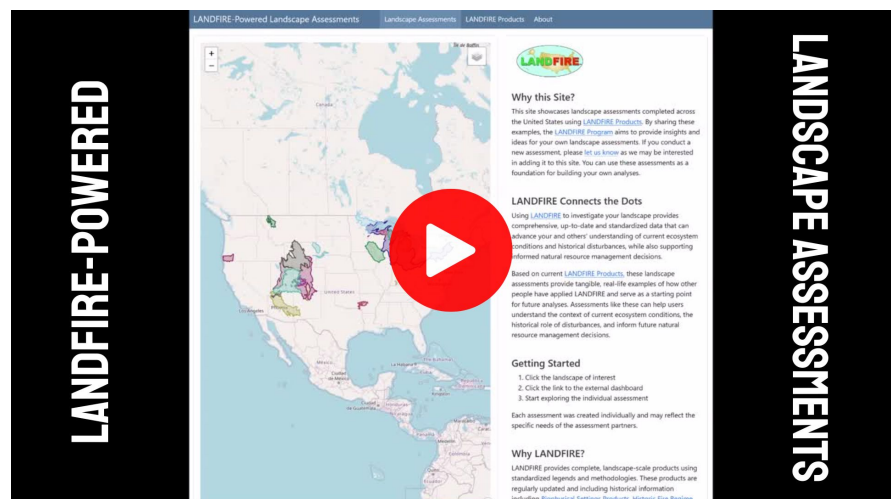
Strand, E. K., K.
Blankenship, C.
Gucker, M. Brunson,
and E. MontBlanc.
2025. "Changing Fire

Regimes in the Great Basin USA.”
Ecosphere 16(2):
e70203.



LANDFIRE-Powered Landscape Assessment Work

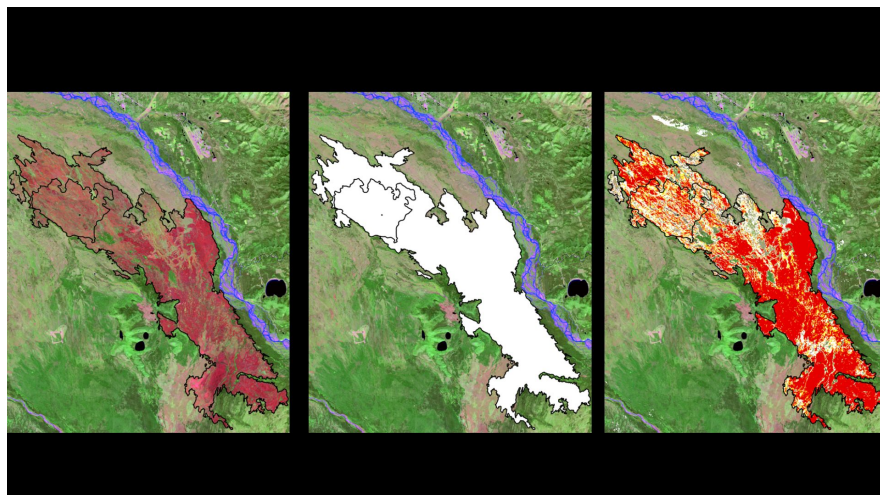
LANDFIRE supports a diverse array of users through the creation of landscape assessments (among other things). Check out the collection of 22 LANDFIRE-Powered Assessments. Is your landscape included?



Improving Severity Assignments in Alaska

Learn how LANDFIRE improved severity assignments for Alaska in LF 2024.

**READ the
Story**



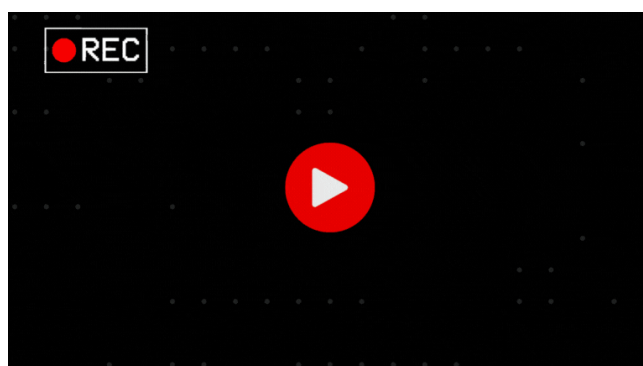
LANDFIRE Office Hour

**The use of LANDFIRE data in
the Wildland Fire Decision
Support System (WFDSS)**

April 30, 2025 1 pm (ET)
Sam Amato, Wildland Fire
Management RD&A

This talk will focus on the use of
LANDFIRE data in risk assessment
and fire behavior analysis for the
management of Wildland Fire.

Did you miss last month's Office Hour?



REGISTER

PARTNER ORGANIZATION: US Forest Service, Wildland Fire Management
Research, Development & Application

NEW IN 2025 Immediately following the Office Hour will be a **hands-on working session** for all to attend. TNC Ecologist, Randy Swaty will be discussing... **TOPIC COMING** No separate link to join the working session, just use the Office Hour link to participate.

Do you script to the LFPS API? (We're Updating it)...

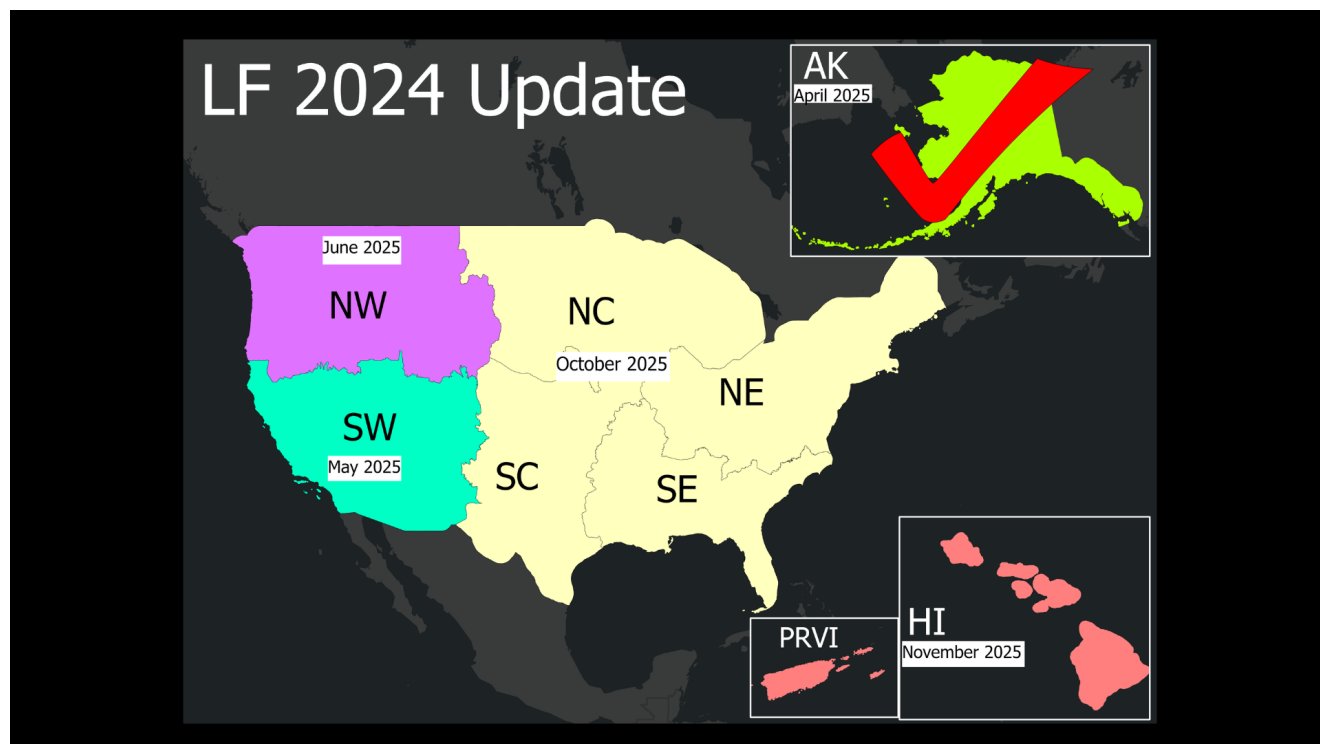
The team is working behind the scenes to plan, test and implement new upgrades. The LFPS improvement timeline is:

- **March:** System development and testing
- **April:** Hidden release to run alongside current system
- **May:** LFPS V2 release with User guide

If you script to the LFPS API and want to learn more about future improvements, send the LANDFIRE helpdesk a quick email (below) and we will provide detailed information on the updates.

Email the helpdesk

(Quick) LANDFIRE 2024 Release Schedule*



*See the full schedule at the link below...

**FULL RELEASE
SCHEDULE**

**LEARN ABOUT
LANDFIRE VERSIONS**

[LANDFIRE helpdesk](#)



Copyright (C) 2025 LANDFIRE & TNC. All rights reserved.

You are receiving this e-mail because you opted in to LANDFIRE Data Alerts. If your interests have changed, no problem, simply unsubscribe.

[Update your preferences](#) or [unsubscribe](#)