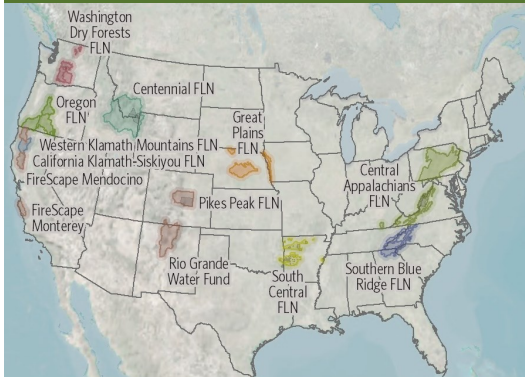


SOUTHERN BLUE RIDGE FIRE LEARNING NETWORK



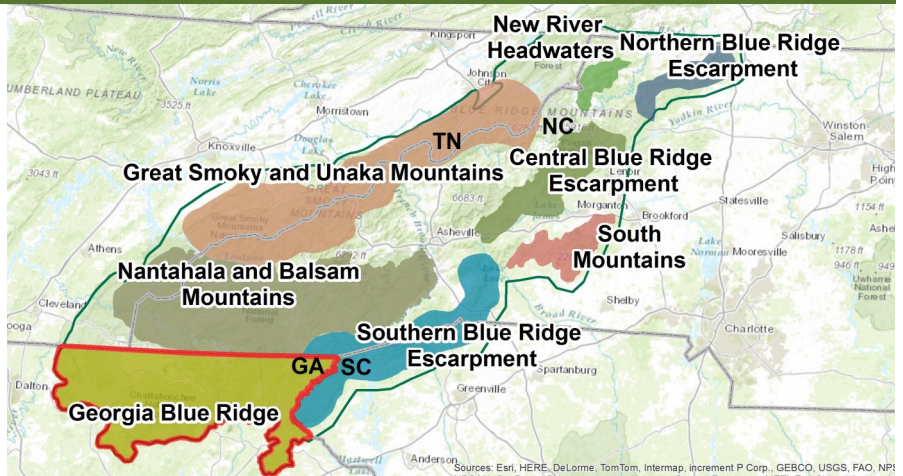
Regional Fire Learning Networks

GEORGIA BLUE RIDGE MOUNTAINS

This landscape is located in northeast Georgia. Rugged ridges and rounded peaks range in elevation from 1,600 to 4,700 feet. About 80% of the area contains Pine-Oak forests that rely of fire to maintain healthy structure and function. Partners are proud to be involved in the [Fire Adapted Communities Learning Network](#) (FAC Net). Outreach has led to increased knowledge about the benefits of fire management and has heightened awareness of wildfire safety and risk

LANDSCAPE ACCOMPLISHMENTS

- ▶ Successful joint chiefs proposal has increased capacity for burning.
- ▶ Workshops have brought together a broad coalition and improved social-ecological resilience.
- ▶ Launched an [outreach website](#) about local [Fire Adapted Communities](#).
- ▶ Engagement of residents through local events and community centers.
- ▶ Developed interpretive signage illustrating the ecological benefits of prescribed fire.



Landscapes of the Southern Blue Ridge Fire Learning Network

NETWORK PRIORITIES

- Build Capacity for large-scale, cross-boundary treatments.
- Integrate social and ecological function of fire on landscapes.
- Inspire Fire Adapted human Communities in additional landscapes.



Residents of a Fire Adapted Community join agency staff for a fuel reduction work event.



Golden-winged Warbler. Prescribed burning is improving habitat conditions for the last remaining population of this bird in Georgia.

LANDSCAPE GOALS

- ▶ Inspire the formation of additional Fire Adapted Communities across the landscape.
- ▶ Highlight accomplishments and success stories through field trips and other outreach events.
- ▶ Continue to improve social-ecological resilience with workshops and planning meetings.
- ▶ Engage and fully integrate all partners and additional stakeholders to build capacity.

LANDSCAPE PARTNERS

Chestatee-Chattahoochee RC&D Council
 Consortiums of Appalachian Fire Managers and Scientists
 Forest Stewards, Inc.
 Georgia Department of Natural Resources—Wildlife Resources Division, State Parks and Historic Sites
 Georgia Forest Watch
 Georgia Forestry Commission
 The Nature Conservancy—Georgia
 USDA Forest Service—Chattahoochee-Oconee NF, Southern Research Station.
 US Army Corps of Engineers—Carters Lake

LANDSCAPE LEADS

Malcom Hodges, The Nature Conservancy
 404-253-7211, mhodges@tnc.org
Mike Davis, US Forest Service
 770-297-3080, madavis@fs.fed.us
Jim Wentworth, US Forest Service
 706-745-6928, jwentworth@fs.fed.us