

APPENDIX M: Maps of non-native species stressor risk factors to GDEs in Nevada

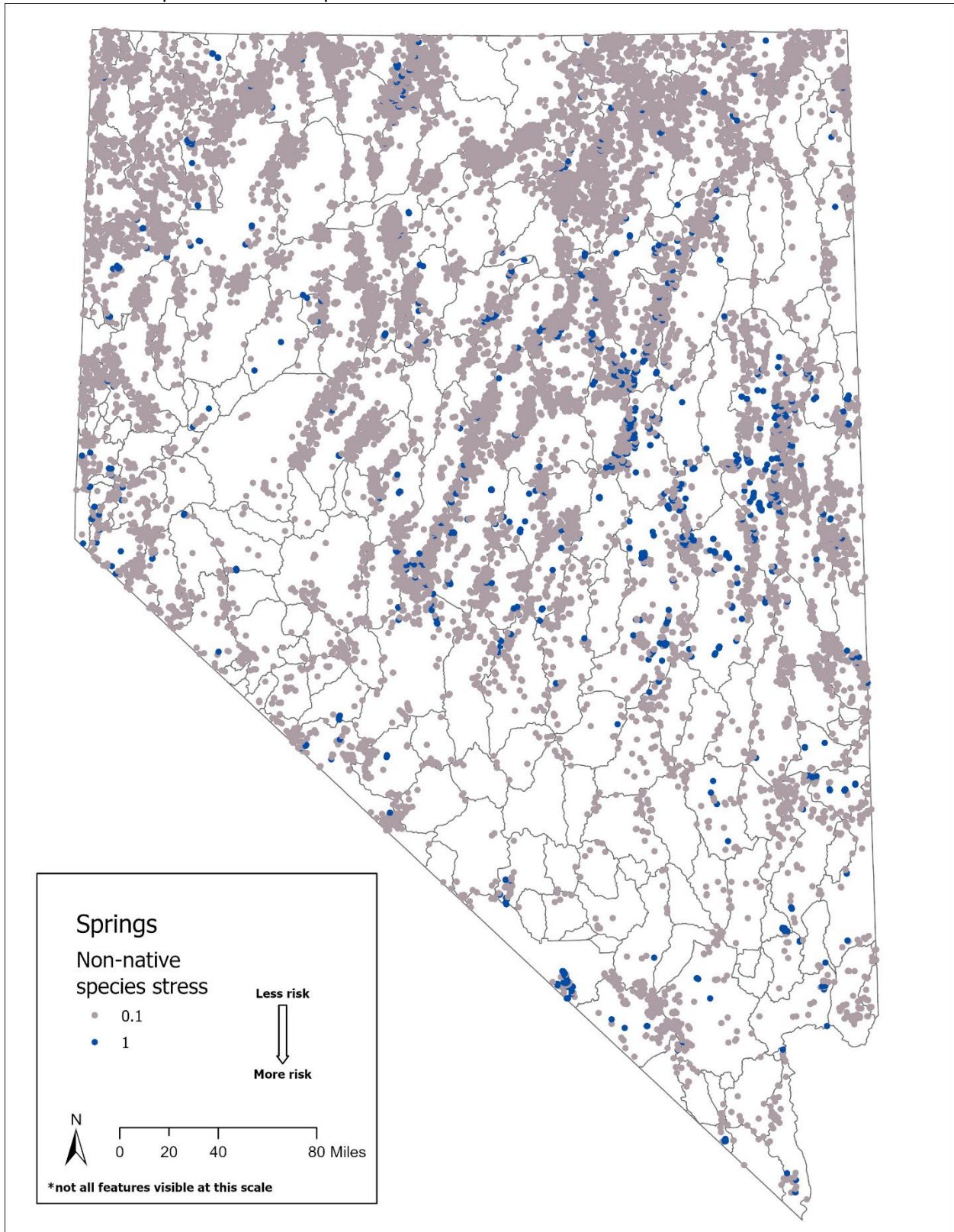


Figure M-1. Non-native species stressor risk factor values for GDE springs in Nevada. Ratings are from 0.00 (negligible risk) to 1.00 (high risk).

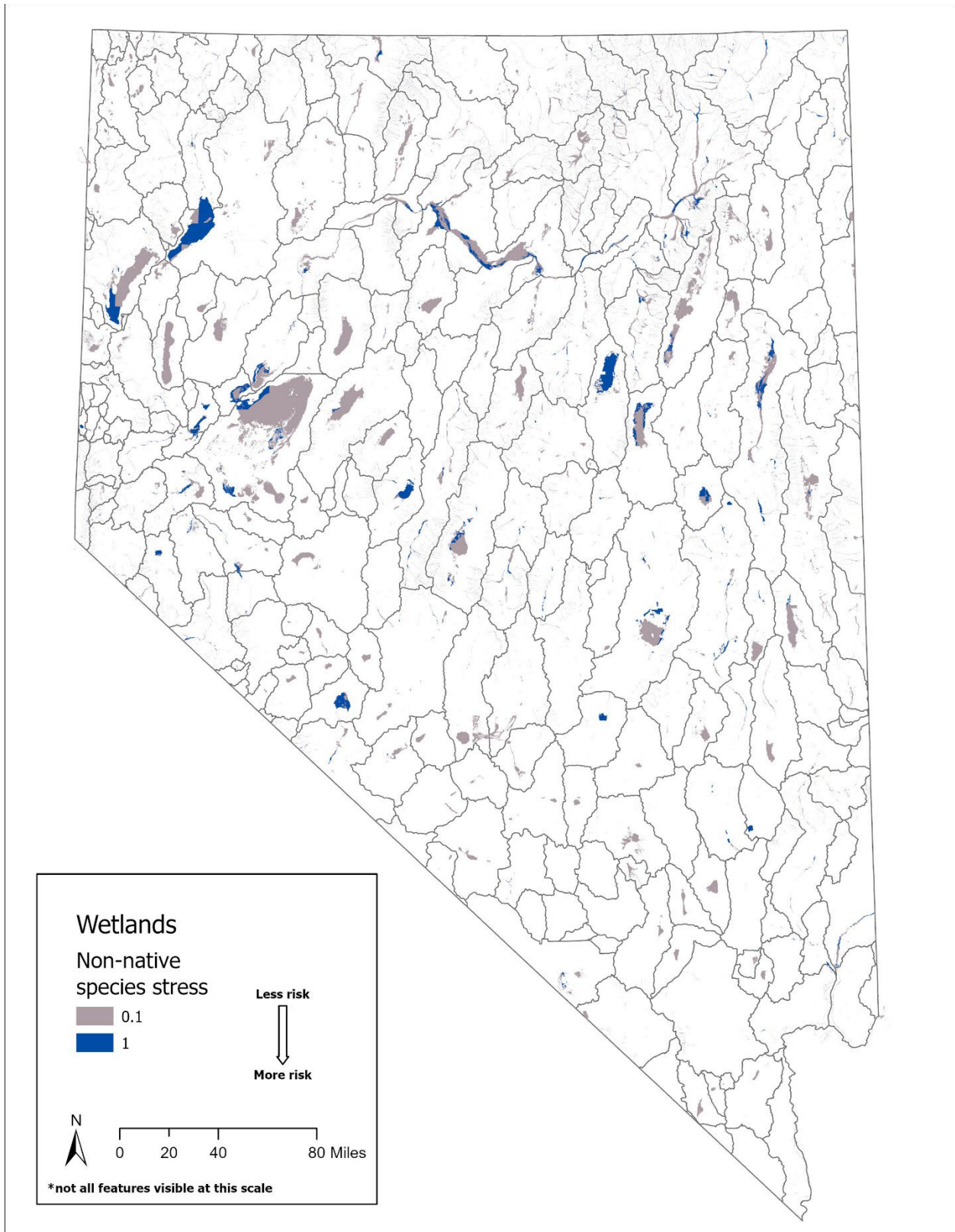


Figure M-2. Non-native species stressor risk factor values to GDE wetlands in Nevada. Ratings are from 0.00 (negligible risk) to 1.00 (high risk).

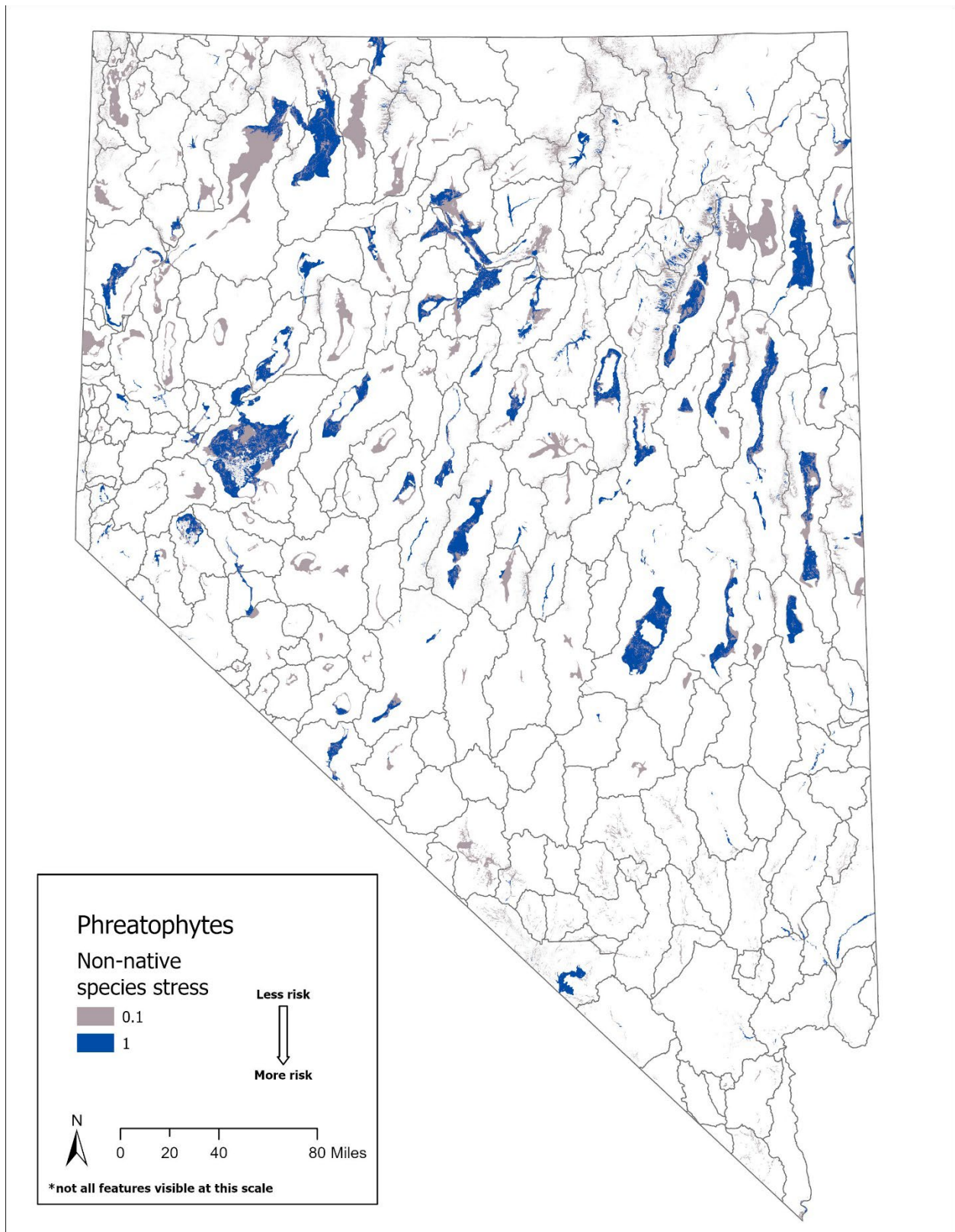


Figure M-3. Non-native species stressor risk factor values to GDE phreatophyte communities in Nevada. Ratings are from 0.00 (negligible risk) to 1.00 (high risk).

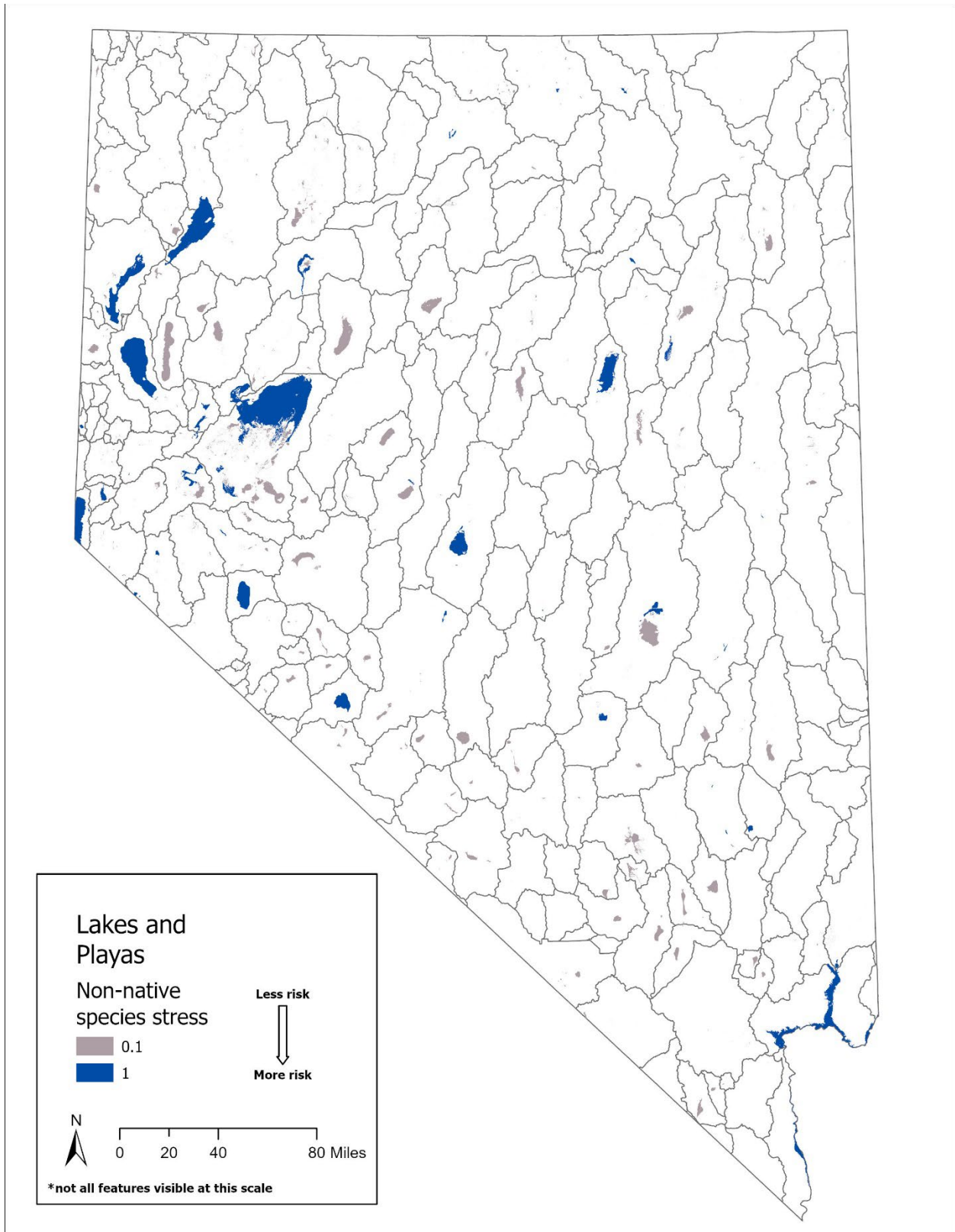


Figure M-4. Non-native species stressor risk factor values to GDE lakes and playas in Nevada. Ratings are from 0.00 (negligible risk) to 1.00 (high risk).

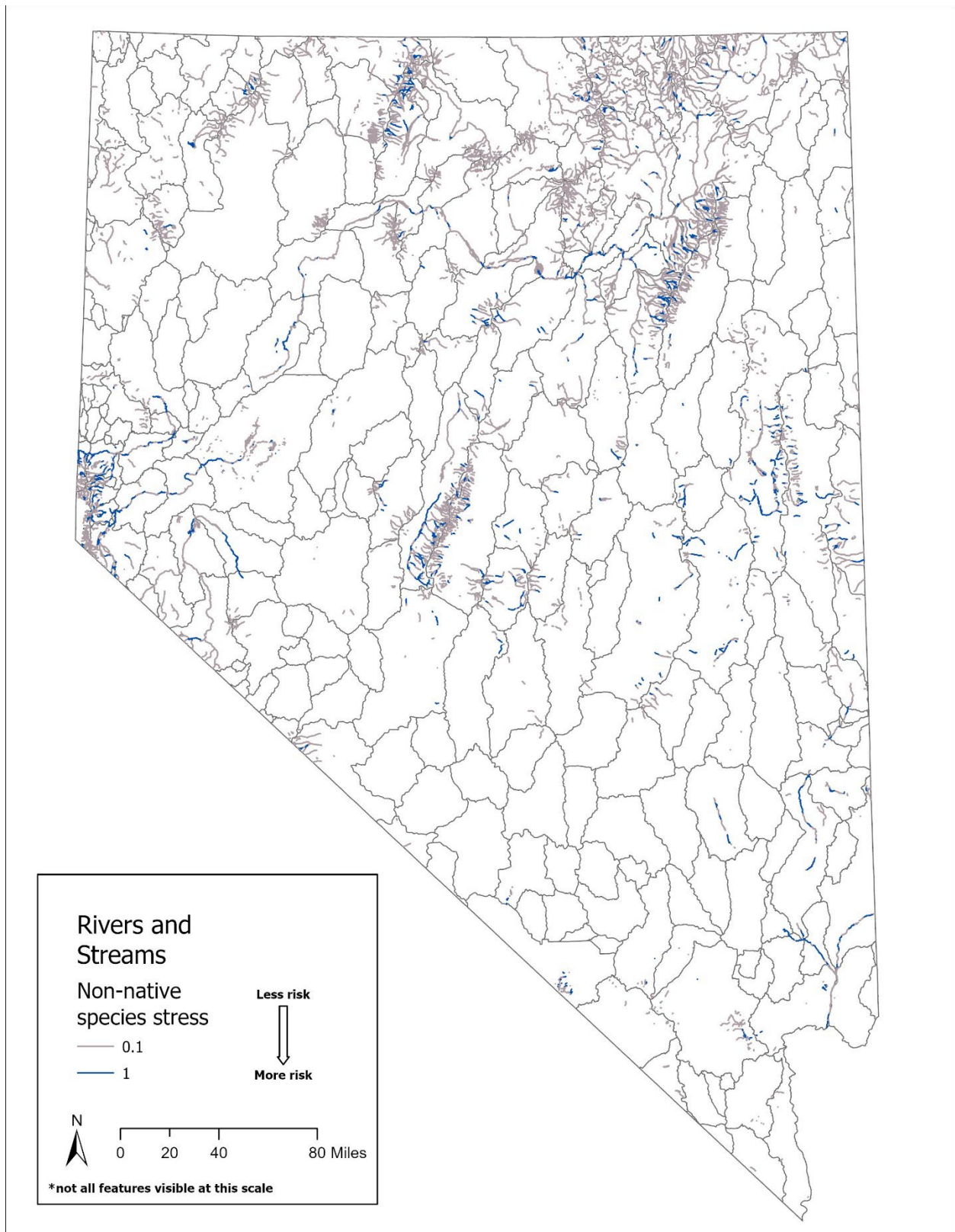


Figure M-5. Non-native species stressor risk factor values to GDE rivers and streams in Nevada. Ratings are from 0.00 (negligible risk) to 1.00 (high risk).