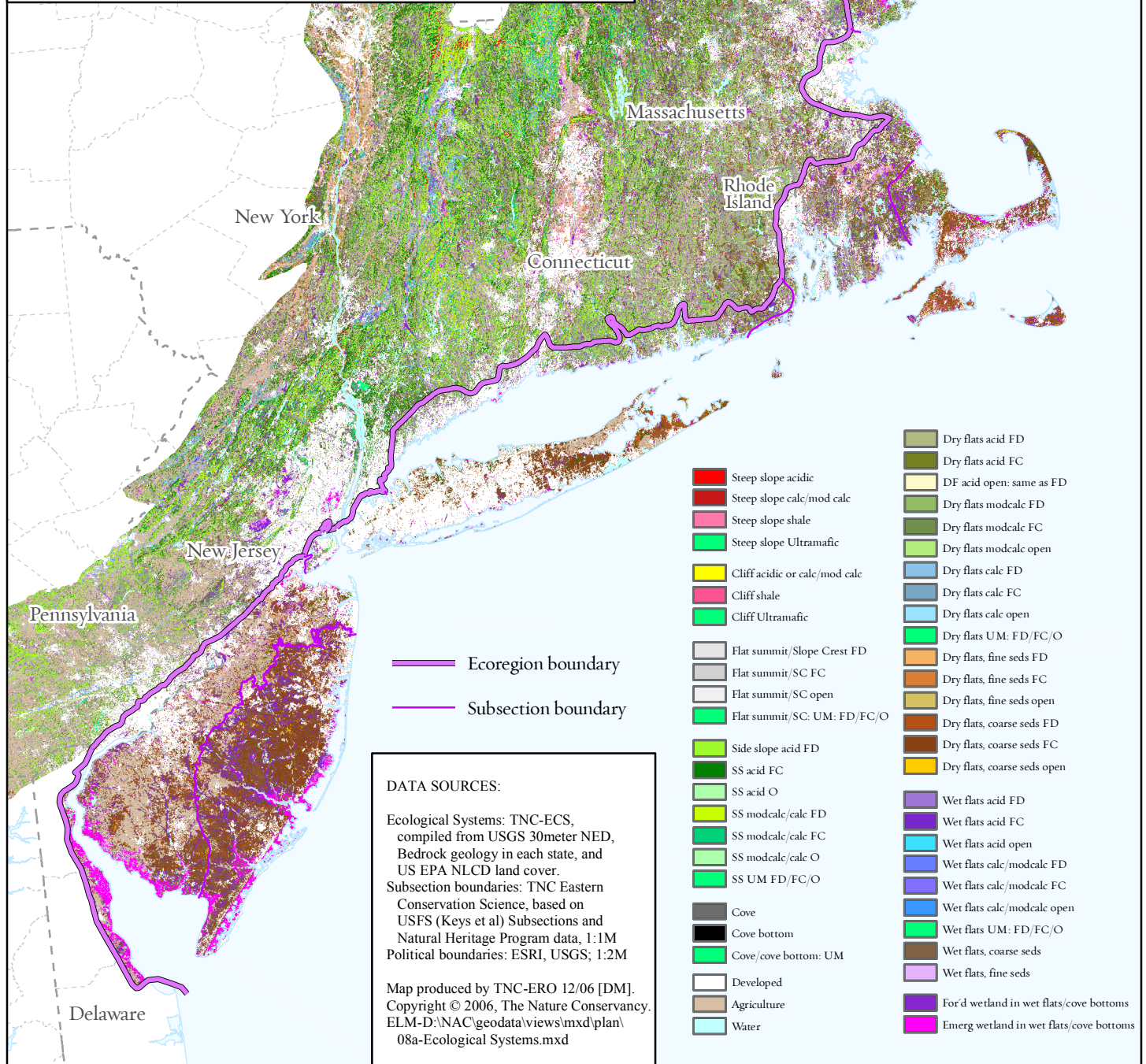
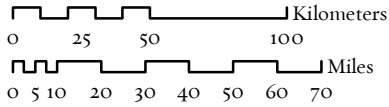


North Atlantic Coast Ecoregion Ecological Systems



DRAFT: 12/06

Scale 1 : 2,750,000



— Ecoregion boundary
 — Subsection boundary

DATA SOURCES:
 Ecological Systems: TNC-ECS, compiled from USGS 30meter NED, Bedrock geology in each state, and US EPA NLCD land cover.
 Subsection boundaries: TNC Eastern Conservation Science, based on USFS (Keys et al) Subsections and Natural Heritage Program data, 1:1M
 Political boundaries: ESRI, USGS; 1:2M

Map produced by TNC-ERO 12/06 [DM].
 Copyright © 2006, The Nature Conservancy.
 ELM-D:\NAC\geodata\views\mxd\plan\08a-Ecological Systems.mxd

- Steep slope acidic
- Steep slope calc/mod calc
- Steep slope shale
- Steep slope Ultramafic
- Cliff acidic or calc/mod calc
- Cliff shale
- Cliff Ultramafic
- Flat summit/Slope Crest FD
- Flat summit/SC FC
- Flat summit/SC open
- Flat summit/SC: UM: FD/FC/O
- Side slope acid FD
- SS acid FC
- SS acid O
- SS modcalc/calc FD
- SS modcalc/calc FC
- SS modcalc/calc O
- SS UM FD/FC/O
- Cove
- Cove bottom
- Cove/cove bottom: UM
- Developed
- Agriculture
- Water
- Dry flats acid FD
- Dry flats acid FC
- DF acid open: same as FD
- Dry flats modcalc FD
- Dry flats modcalc FC
- Dry flats modcalc open
- Dry flats calc FD
- Dry flats calc FC
- Dry flats calc open
- Dry flats UM: FD/FC/O
- Dry flats, fine seds FD
- Dry flats, fine seds FC
- Dry flats, fine seds open
- Dry flats, coarse seds FD
- Dry flats, coarse seds FC
- Dry flats, coarse seds open
- Wet flats acid FD
- Wet flats acid FC
- Wet flats acid open
- Wet flats calc/modcalc FD
- Wet flats calc/modcalc FC
- Wet flats calc/modcalc open
- Wet flats UM: FD/FC/O
- Wet flats, coarse seds
- Wet flats, fine seds
- For'd wetland in wet flats/cove bottoms
- Emerg wetland in wet flats/cove bottoms