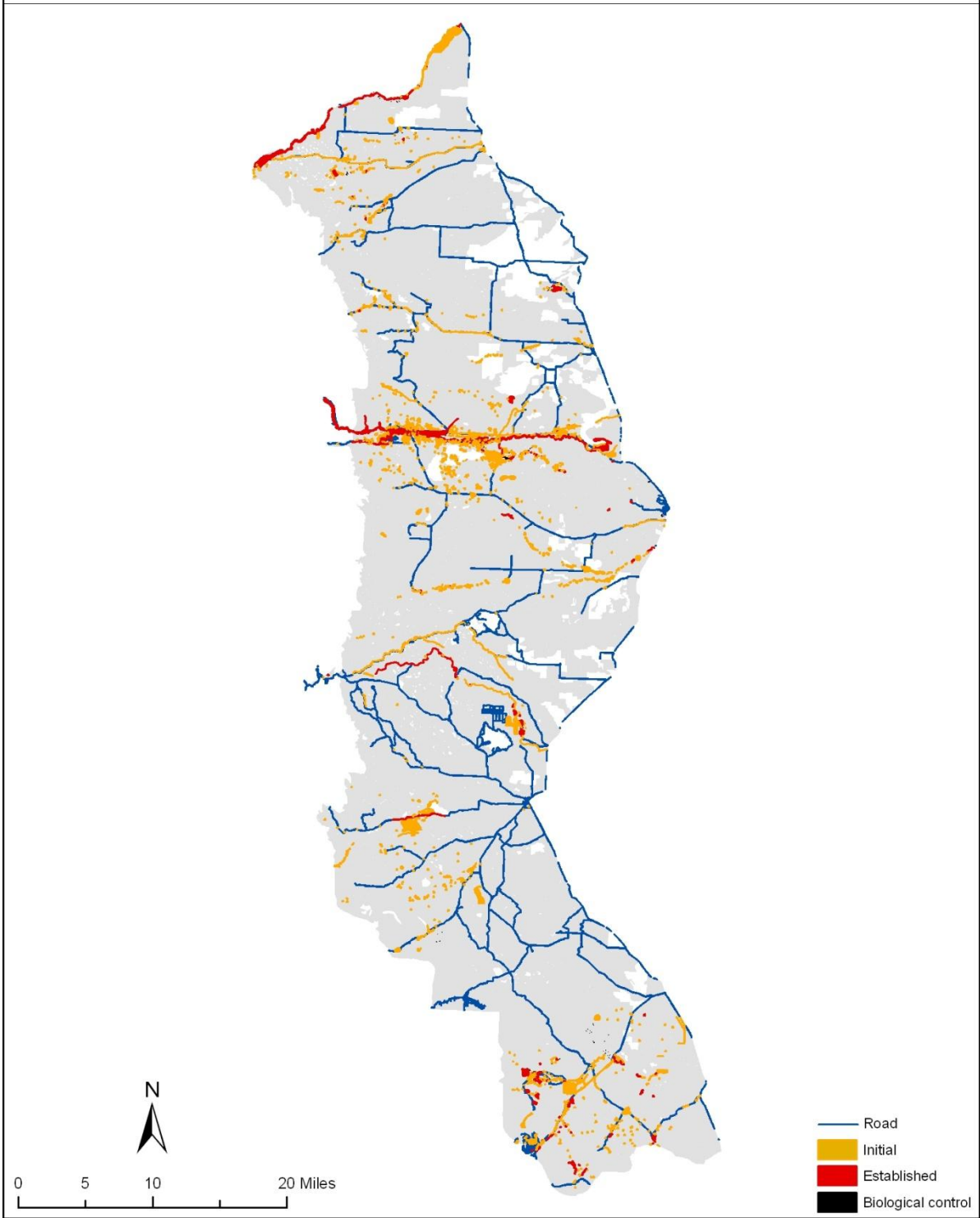
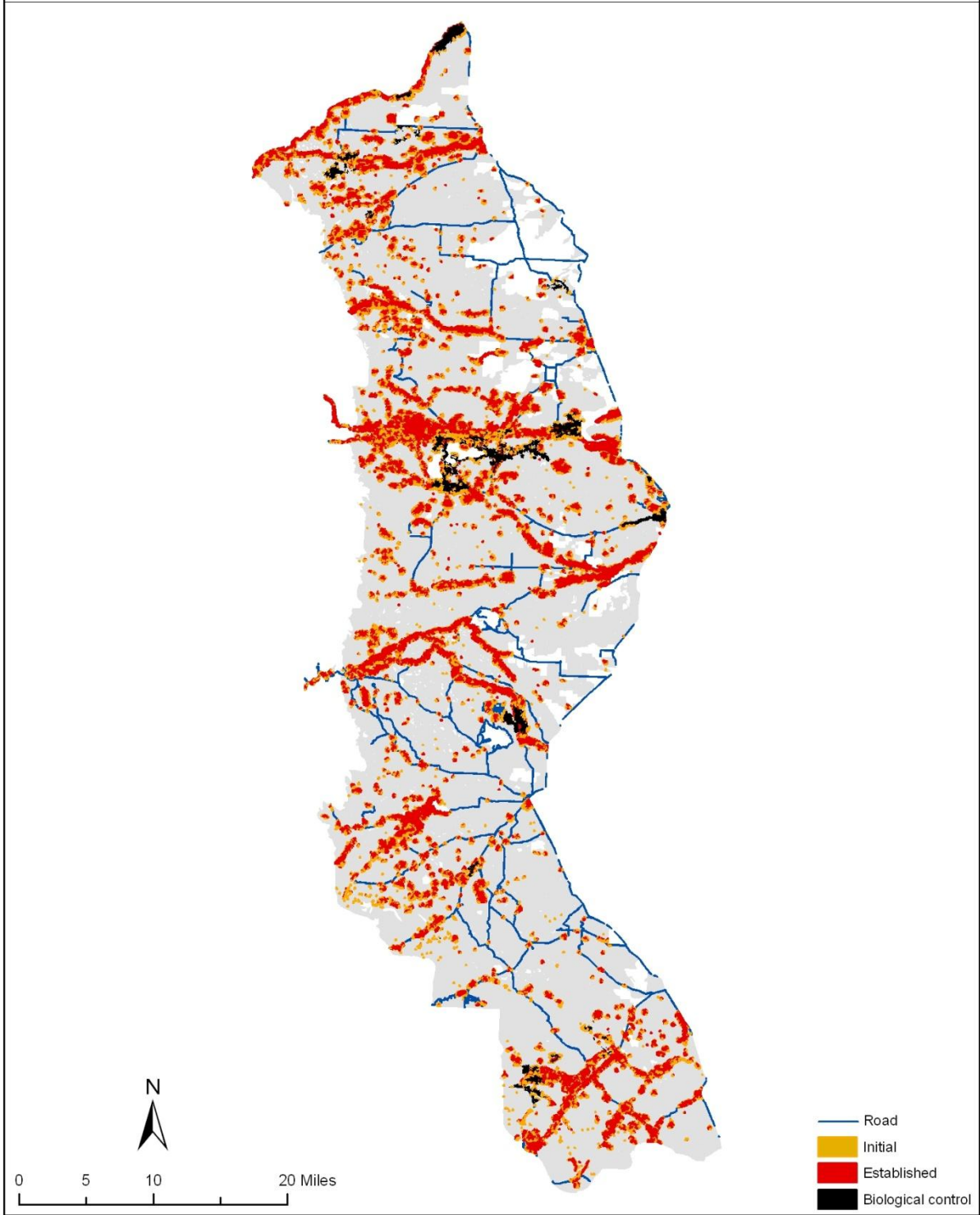


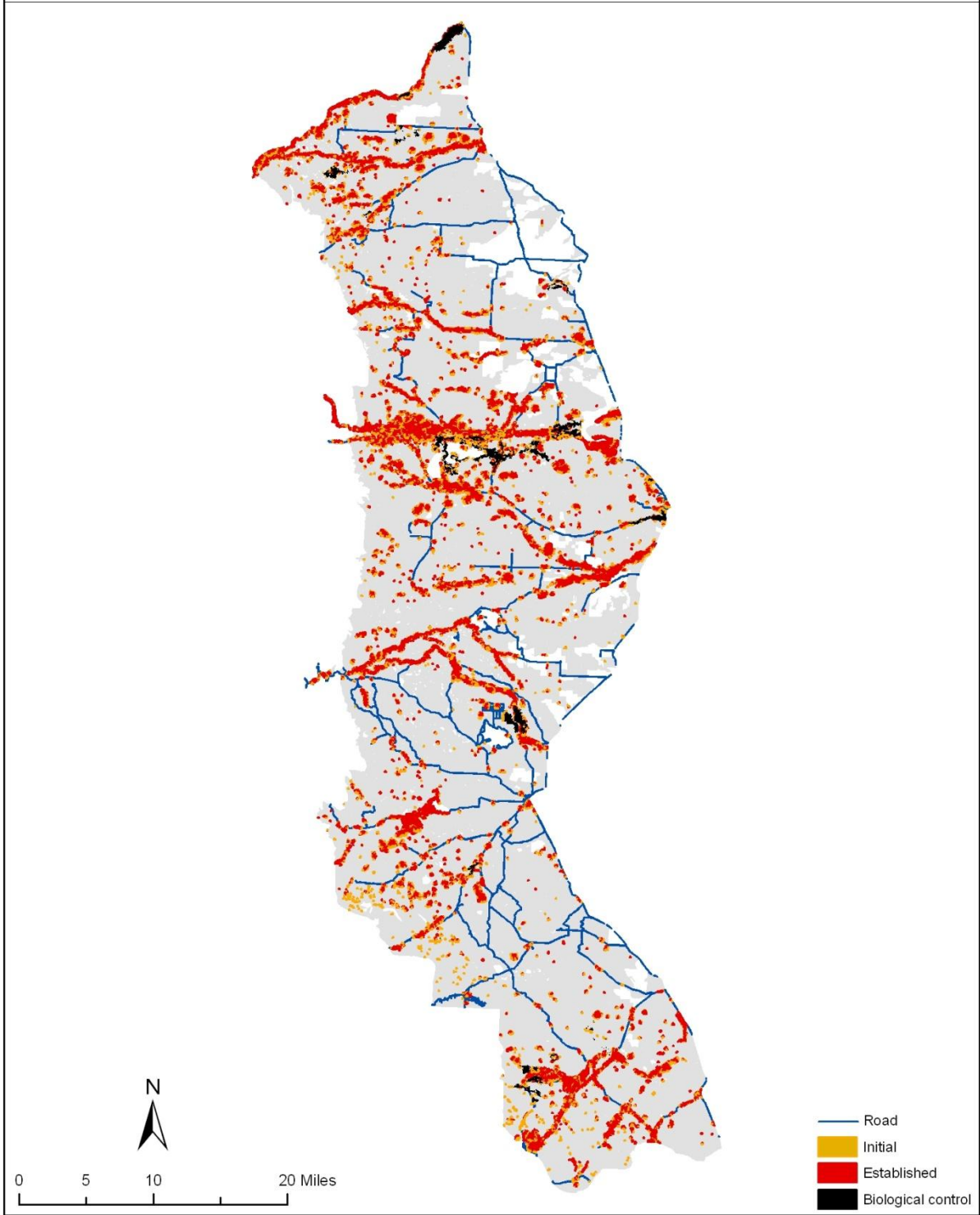
Rocky Mountain Front - *Centaurea maculosa* & *Euphorbia esula* -
Initial



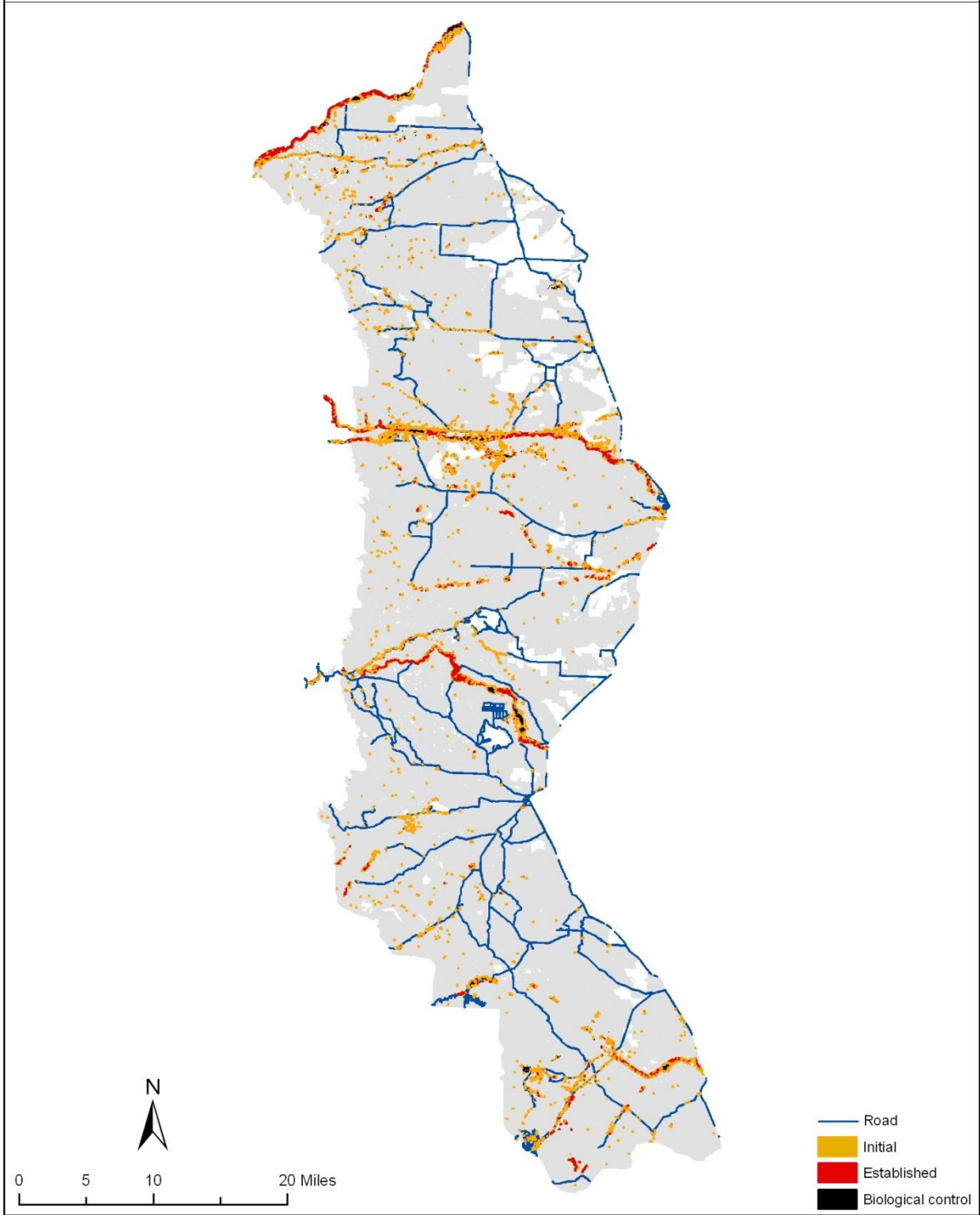
Rocky Mountain Front - *Centaurea maculosa* & *Euphorbia esula* -
High Spread - No Management - Year 40



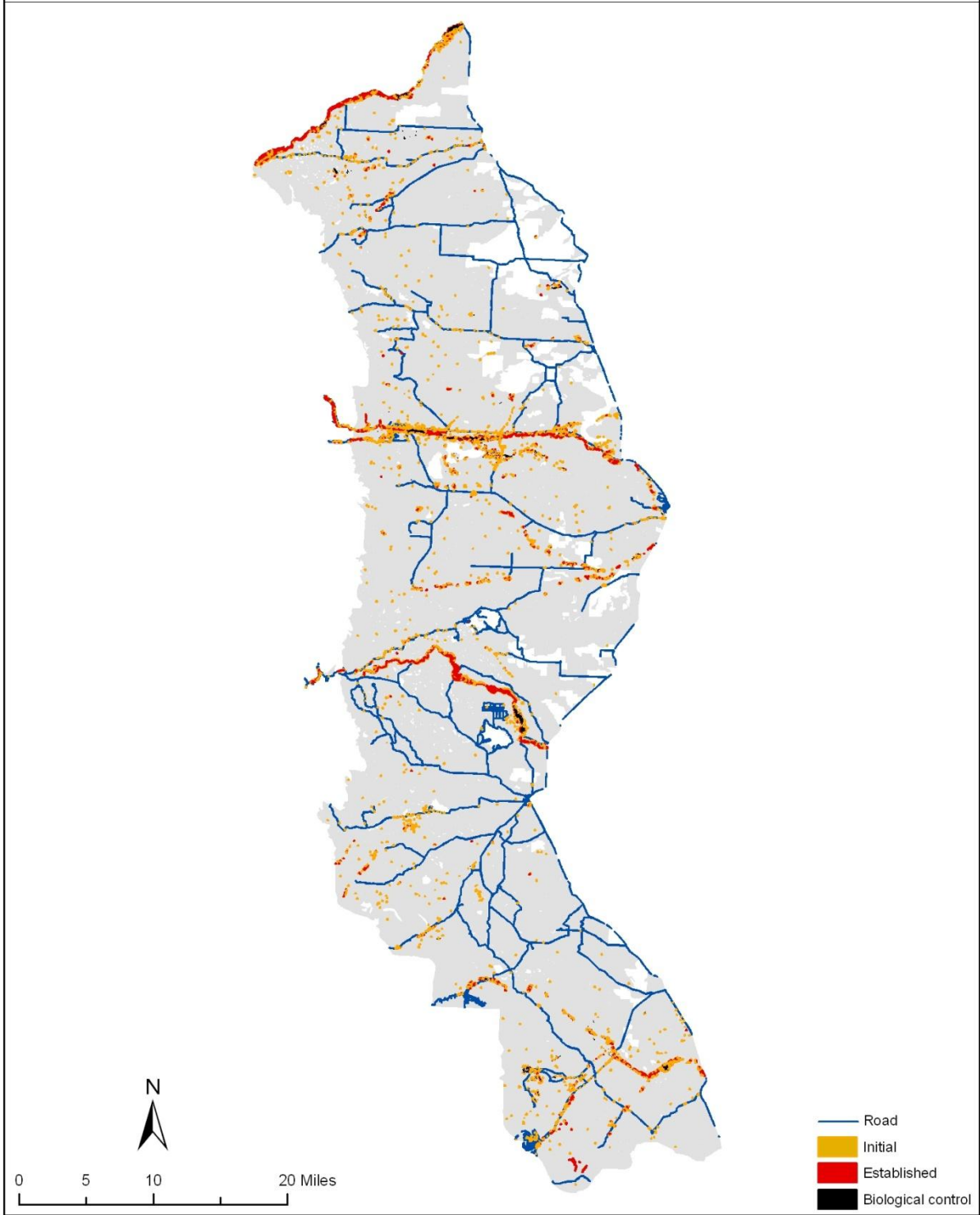
Rocky Mountain Front - *Centaurea maculosa* & *Euphorbia esula* -
Low Spread - No Management - Year 40



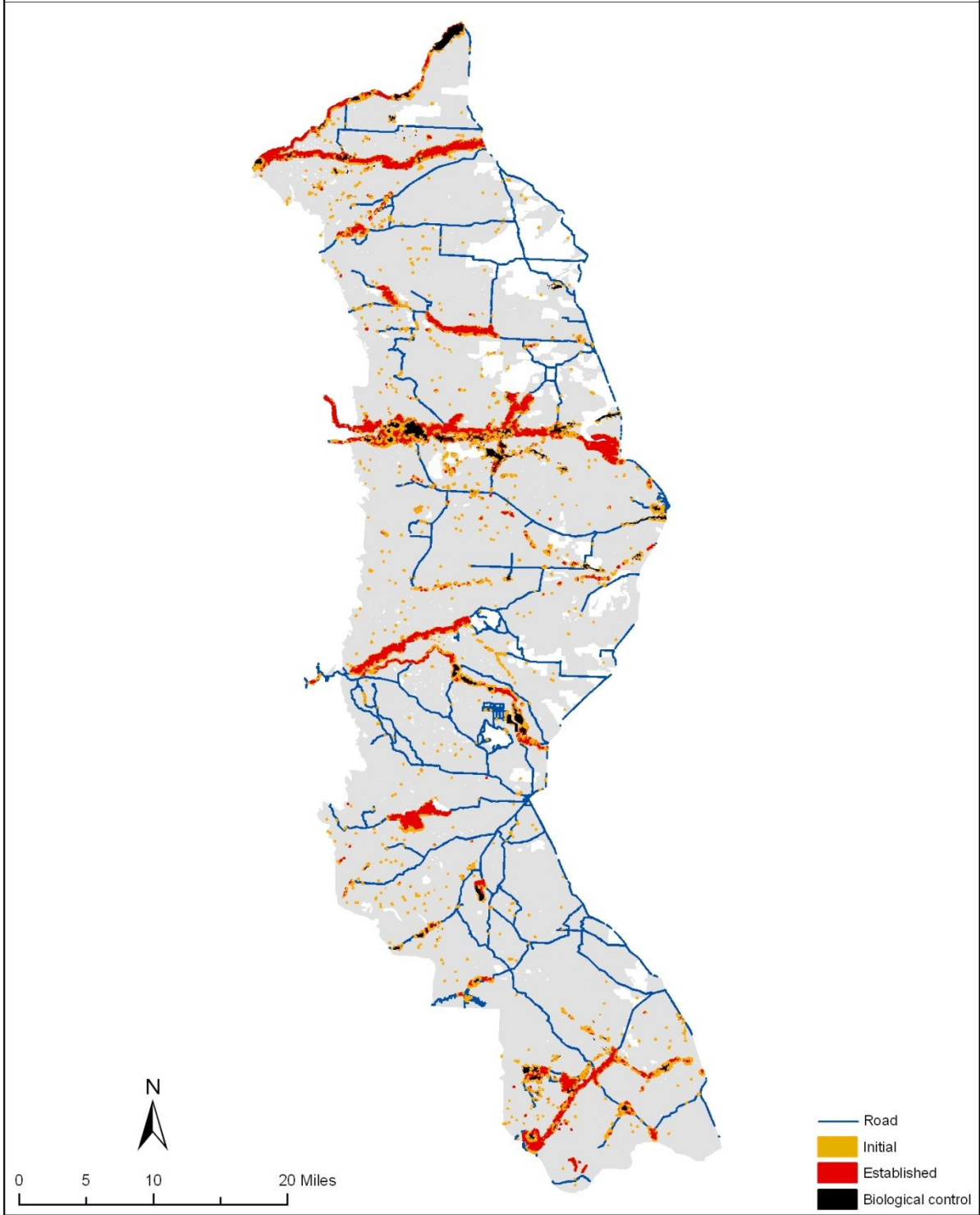
Rocky Mountain Front - *Centaurea maculosa* & *Euphorbia esula* -
High Spread - Unlimited Management - Year 40



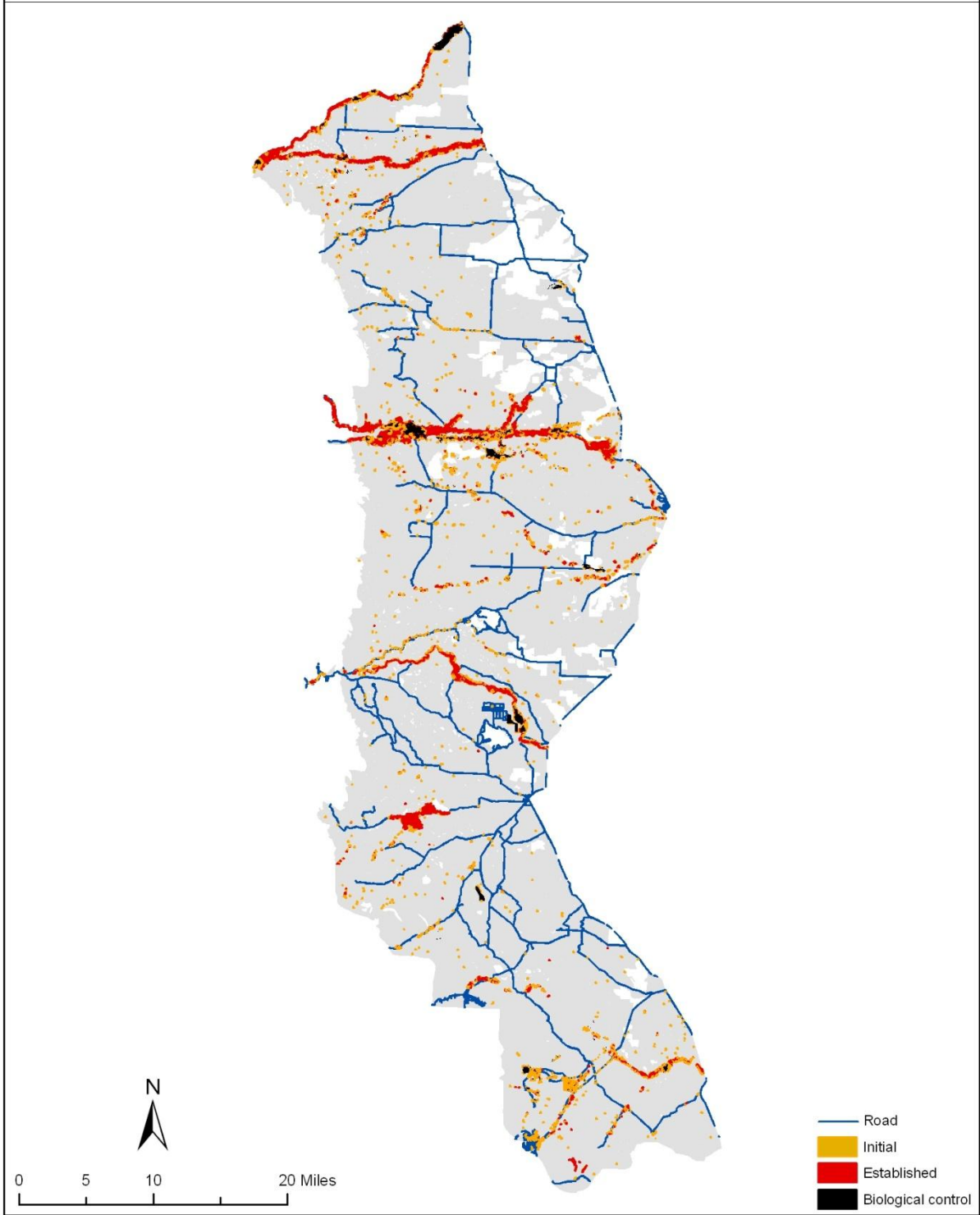
Rocky Mountain Front - *Centaurea maculosa* & *Euphorbia esula* -
Low Spread - Unlimited Management - Year 40



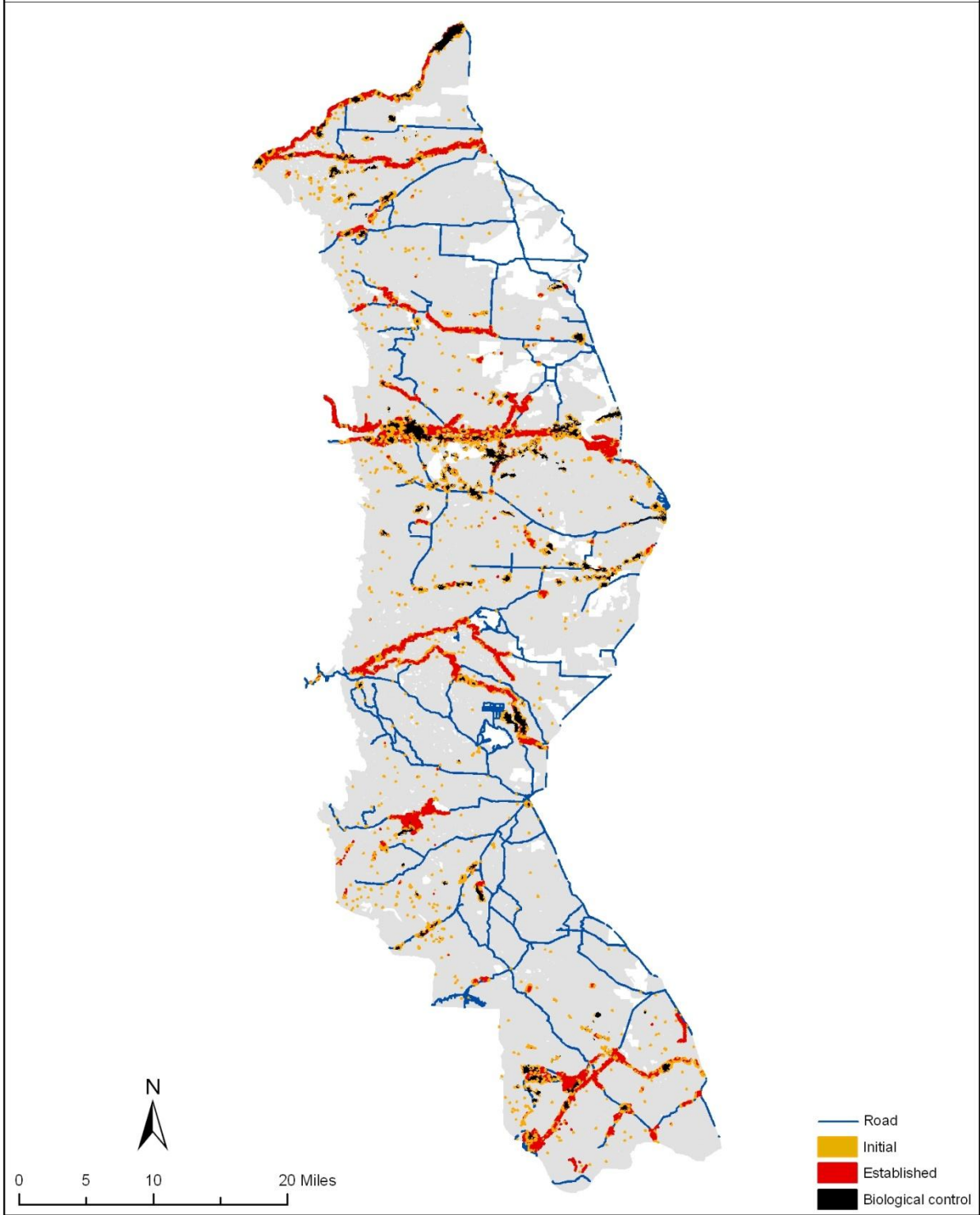
Rocky Mountain Front - *Centaurea maculosa* & *Euphorbia esula* -
High Spread - 2300 ha Management Ceiling - Year 40



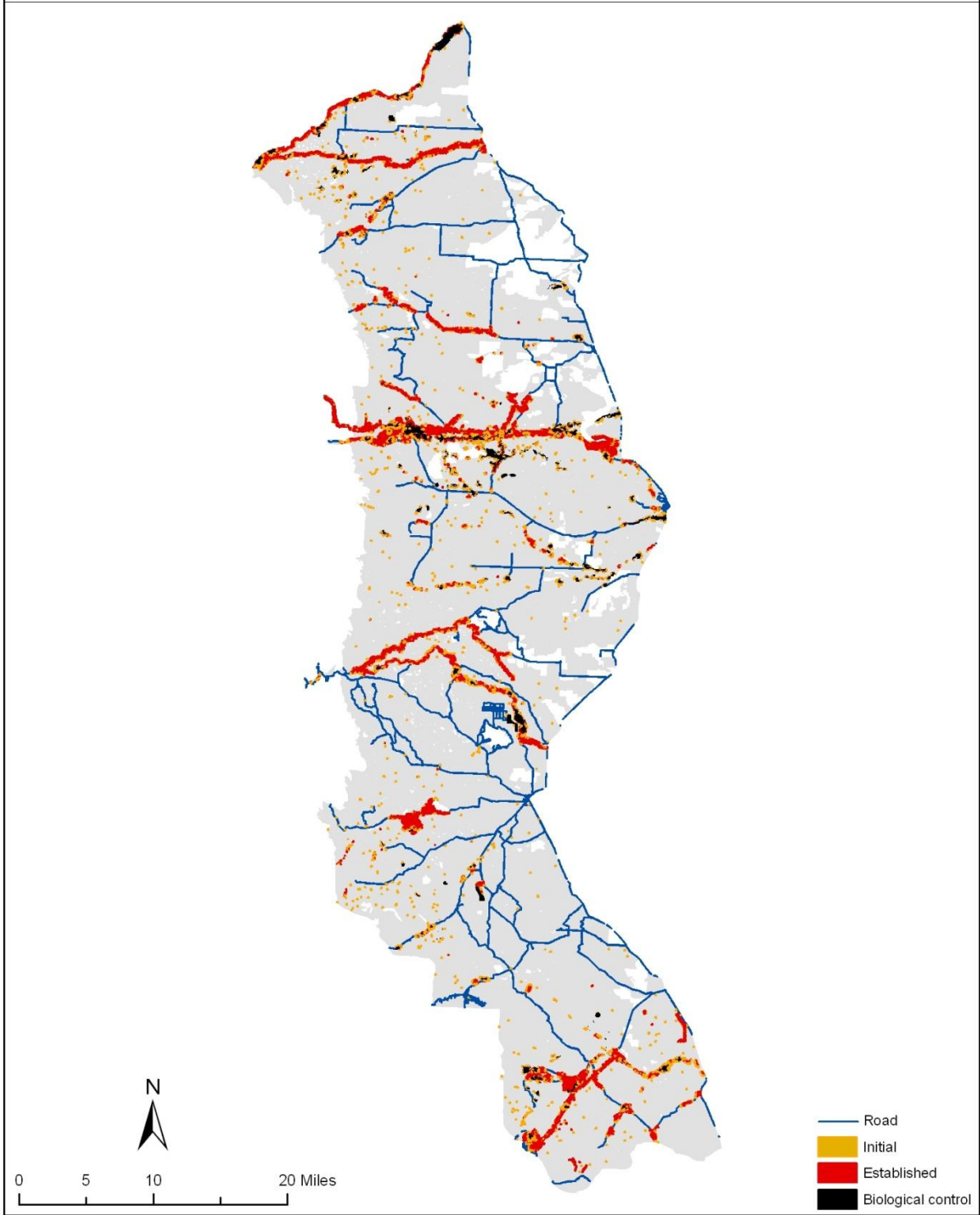
Rocky Mountain Front - *Centaurea maculosa* & *Euphorbia esula* -
Low Spread - 2300 ha Management Ceiling - Year 40



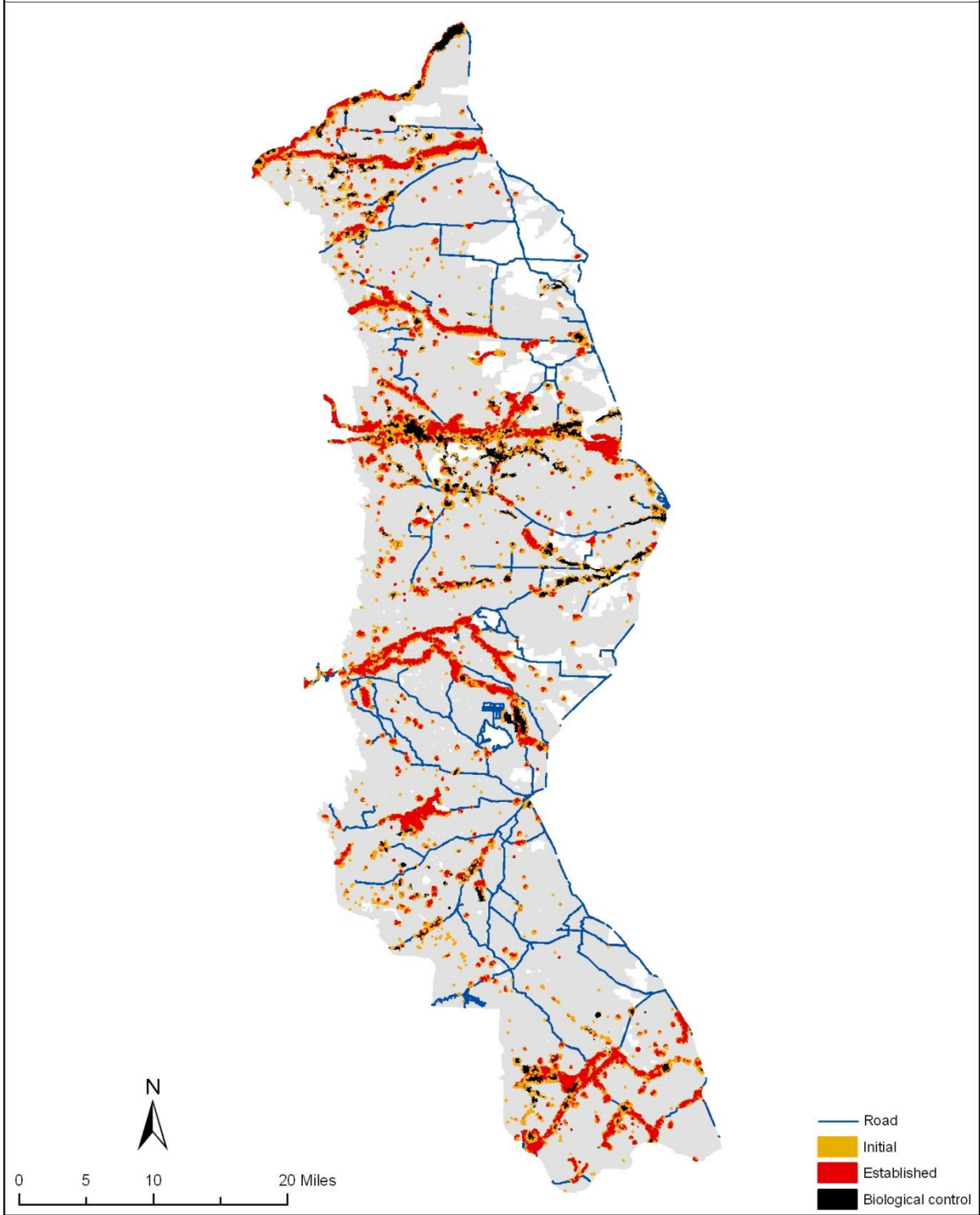
Rocky Mountain Front - *Centaurea maculosa* & *Euphorbia esula* -
High Spread - 1150 ha Management Ceiling - Year 40



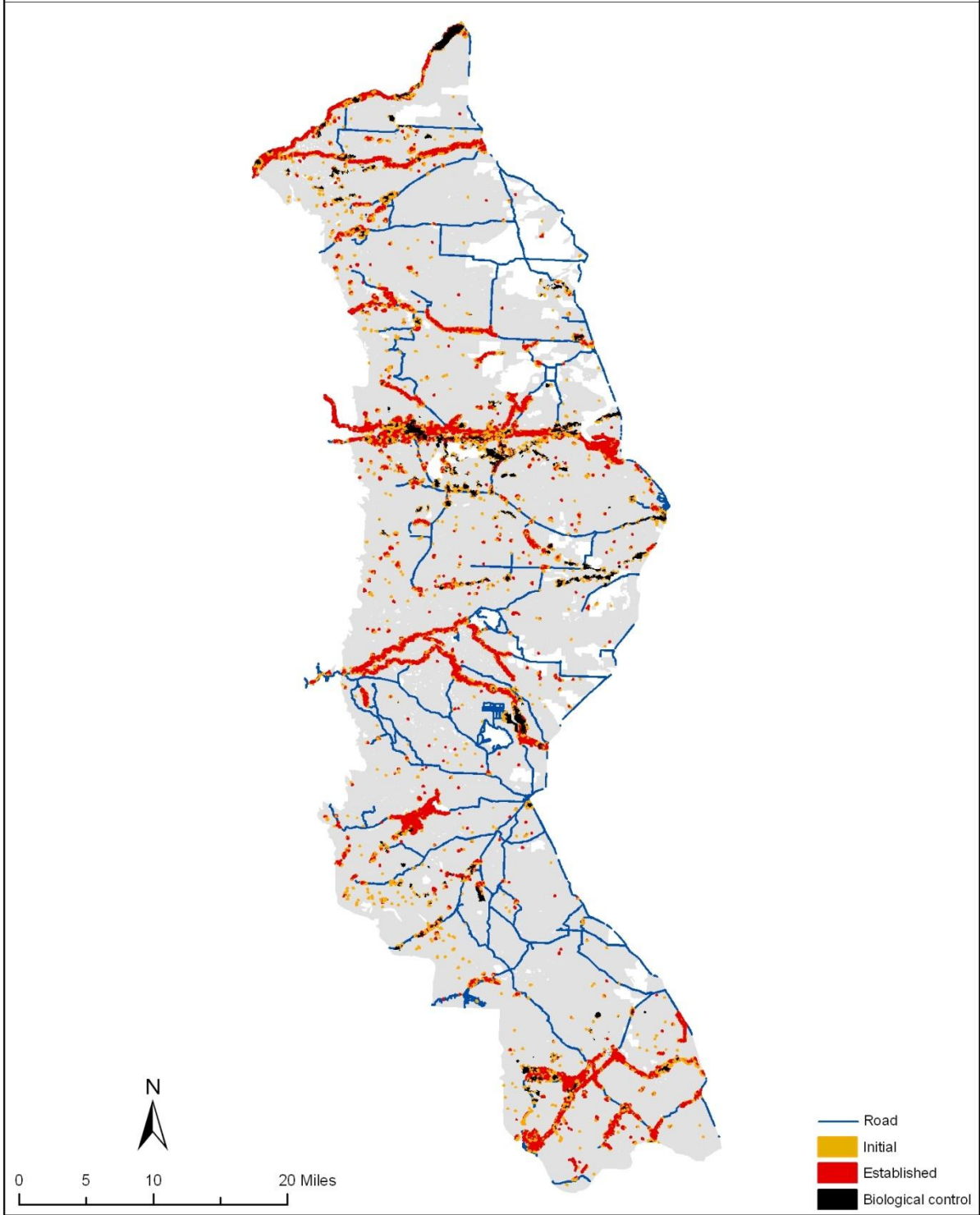
Rocky Mountain Front - *Centaurea maculosa* & *Euphorbia esula* -
Low Spread - 1150 ha Management Ceiling - Year 40



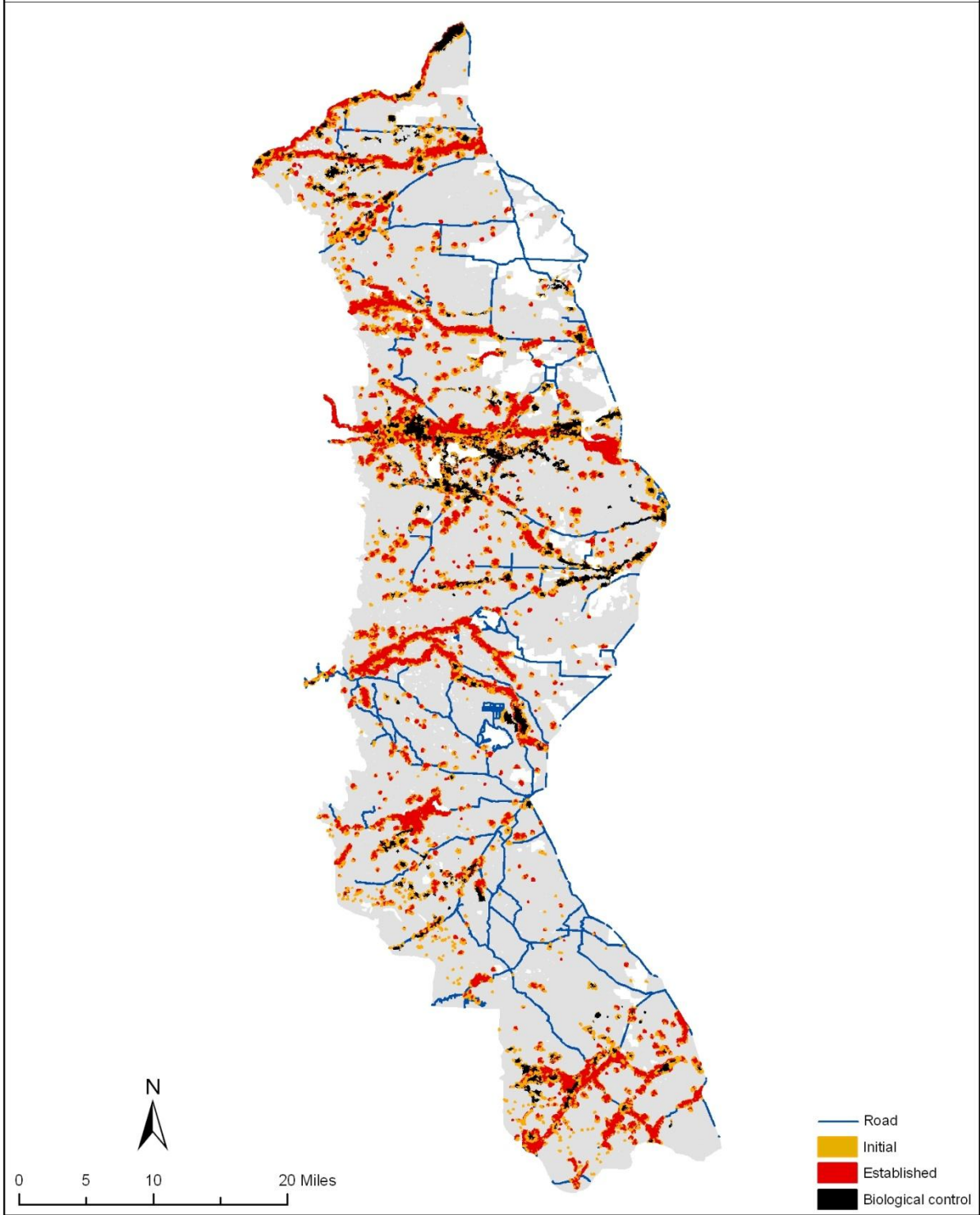
Rocky Mountain Front - *Centaurea maculosa* & *Euphorbia esula* -
High Spread - 575 ha Management Ceiling - Year 40



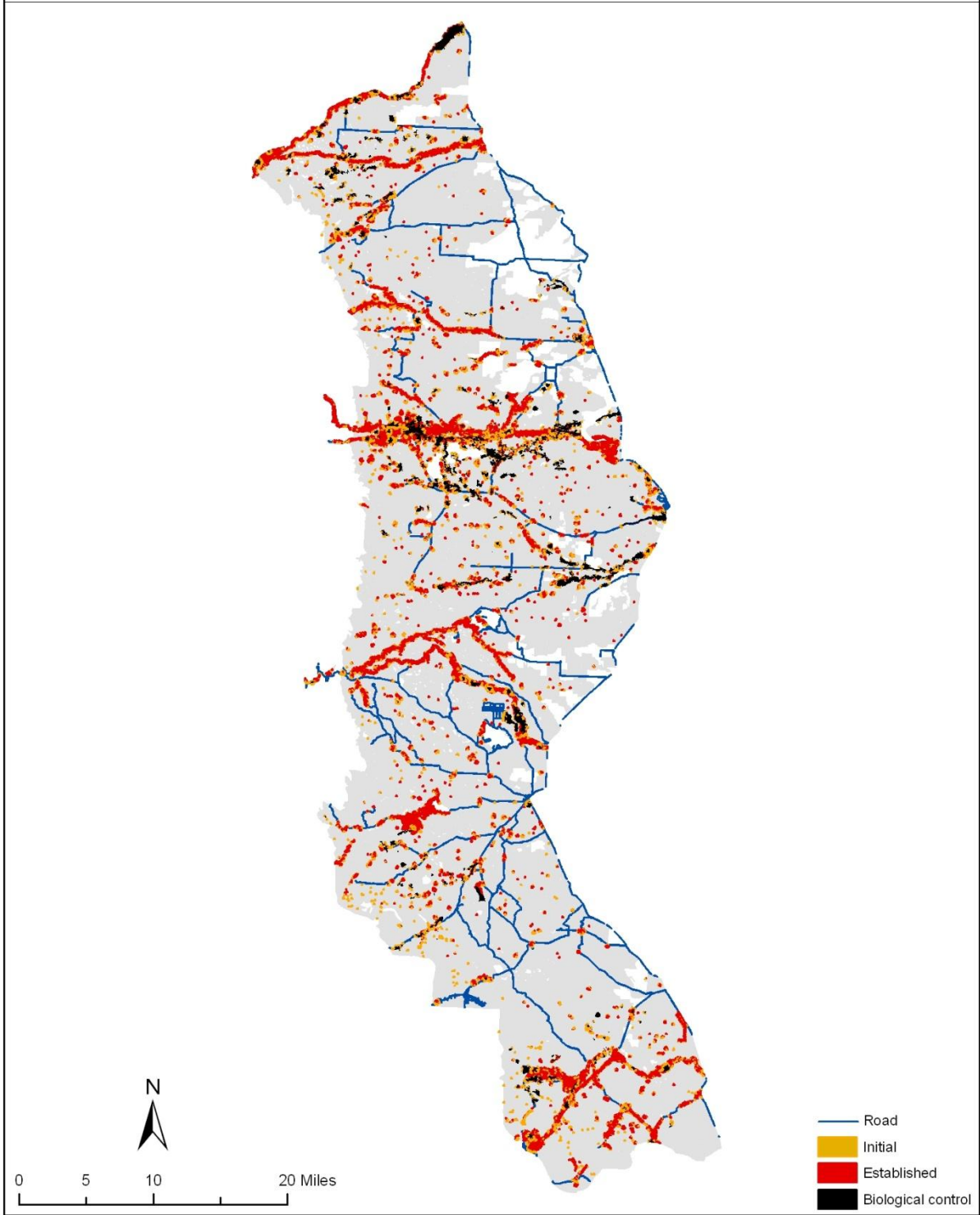
Rocky Mountain Front - *Centaurea maculosa* & *Euphorbia esula* -
Low Spread - 575 ha Management Ceiling - Year 40



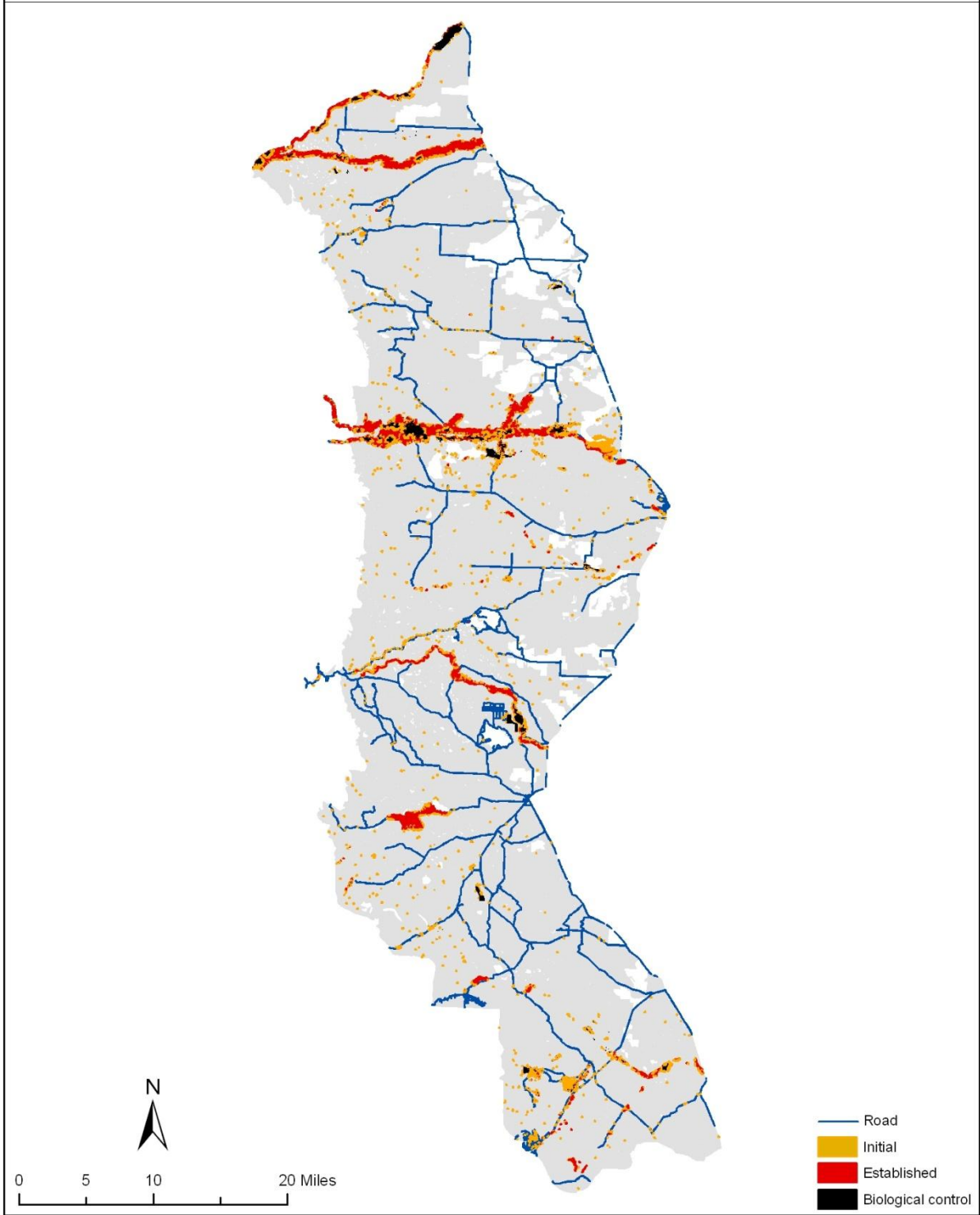
Rocky Mountain Front - *Centaurea maculosa* & *Euphorbia esula* -
High Spread - 100 ha Management Ceiling - Year 40



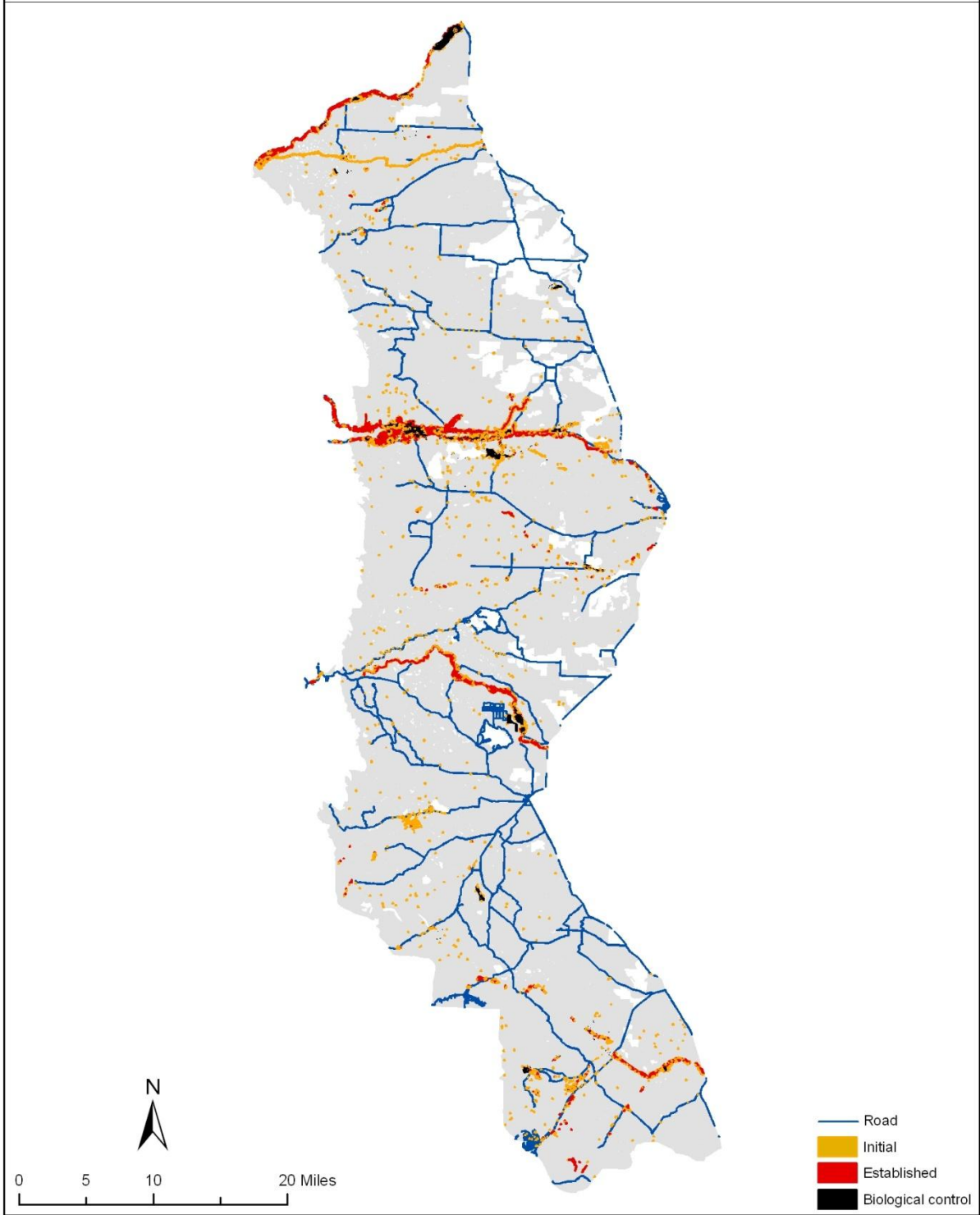
Rocky Mountain Front - *Centaurea maculosa* & *Euphorbia esula* -
Low Spread - 100 ha Management Ceiling - Year 40



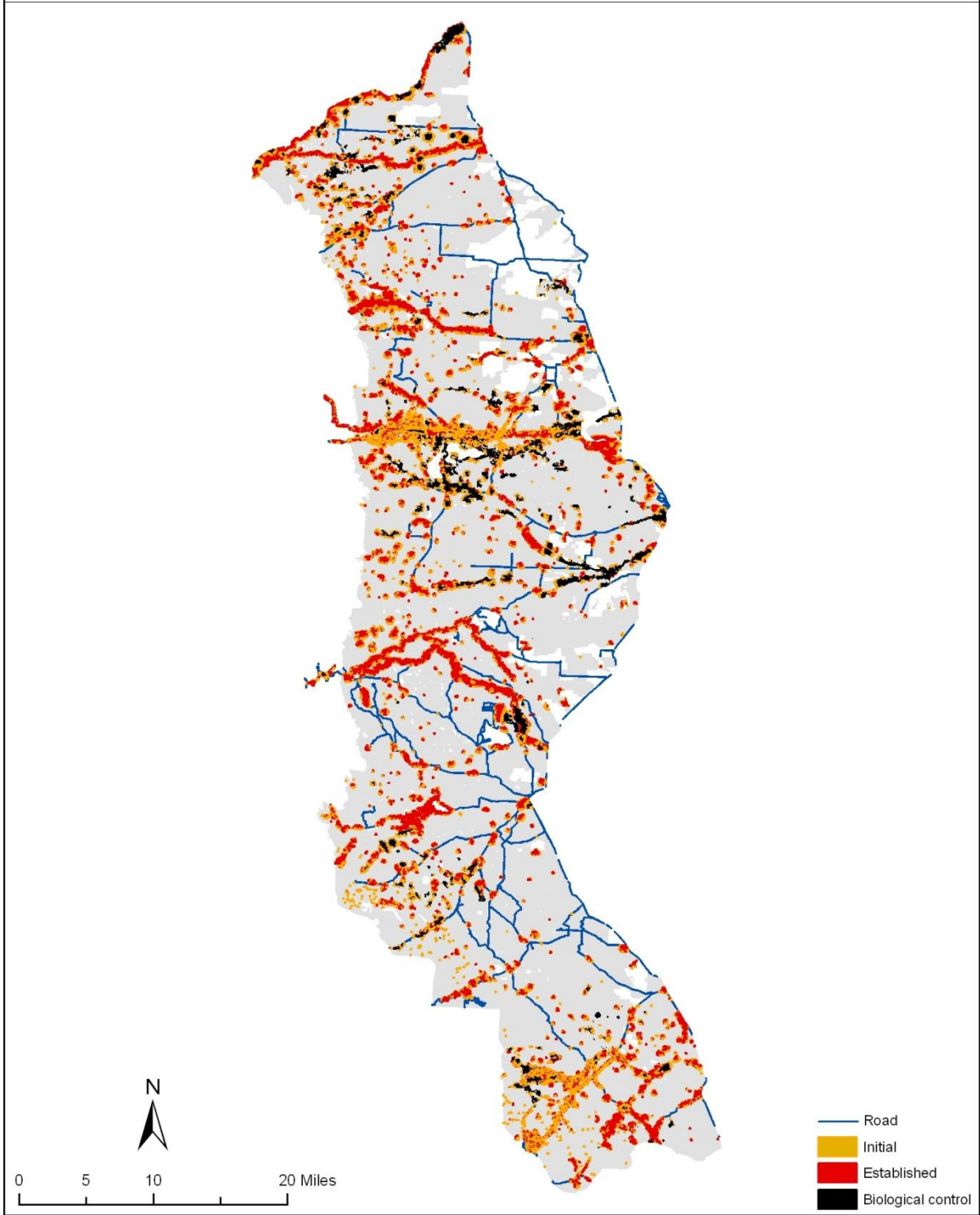
Rocky Mountain Front - *Centaurea maculosa* & *Euphorbia esula* -
High Spread - High Control Success - Year 40



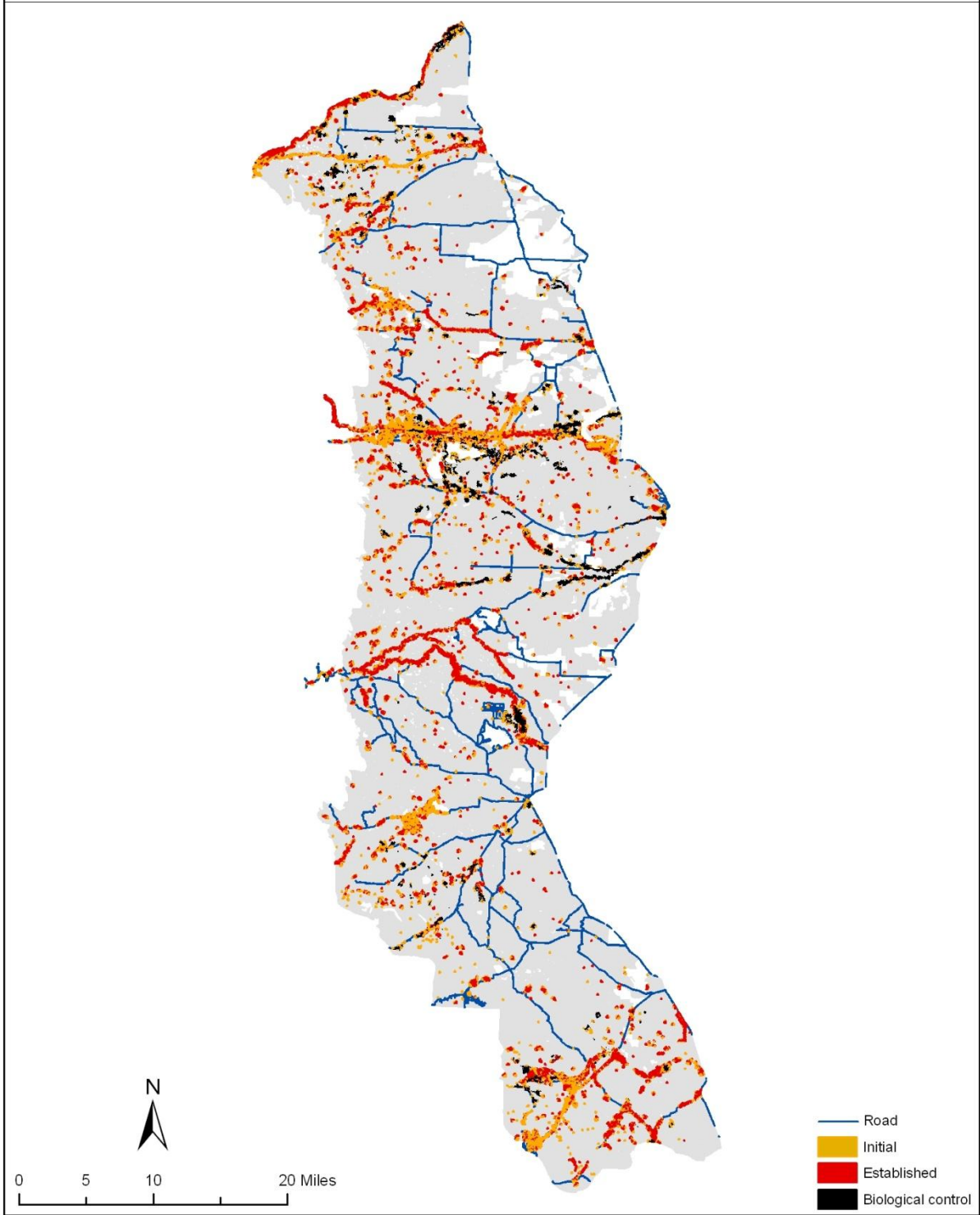
Rocky Mountain Front - *Centaurea maculosa* & *Euphorbia esula* -
Low Spread - High Control Success - Year 40



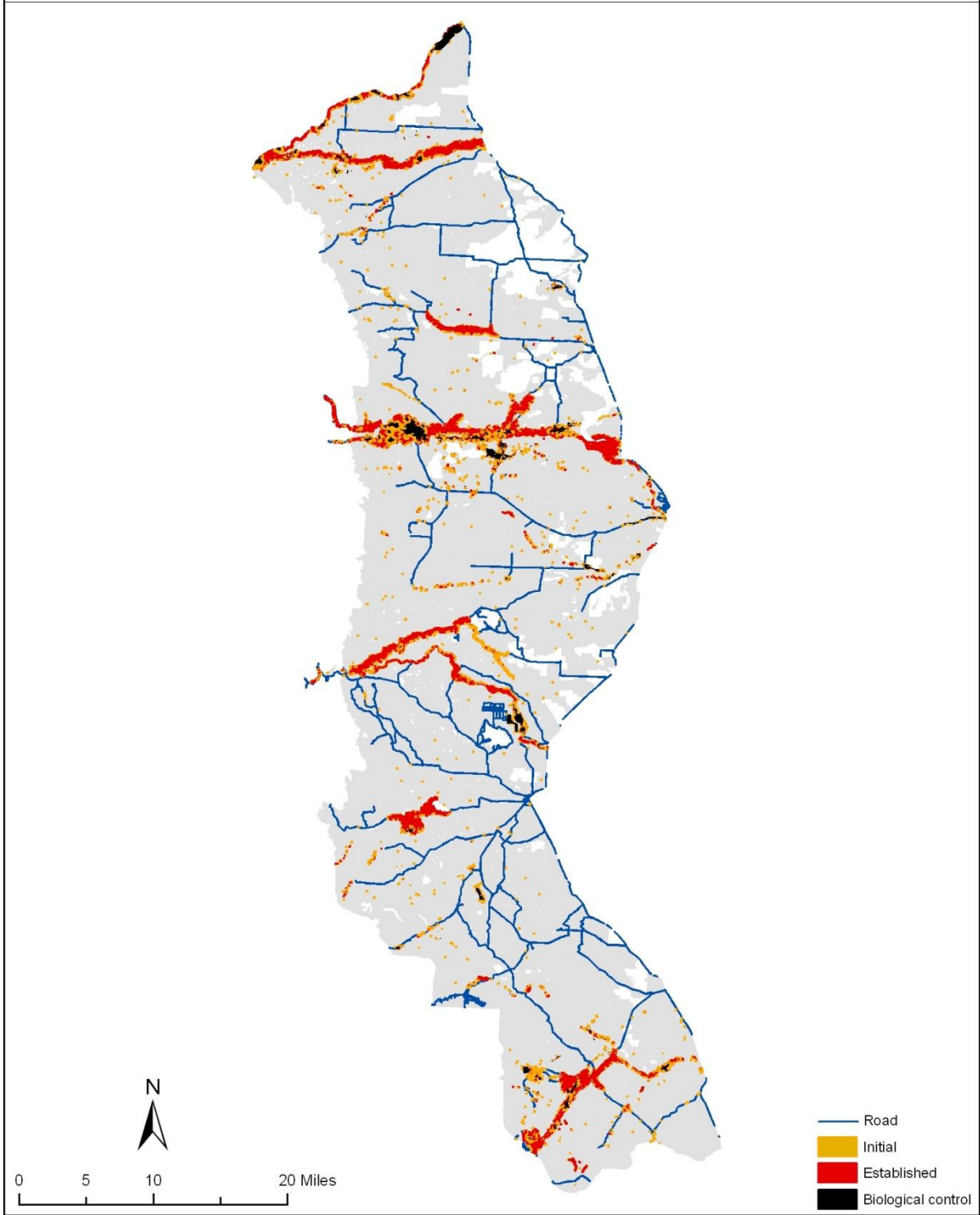
Rocky Mountain Front - *Centaurea maculosa* & *Euphorbia esula* -
High Spread - Large Patch Edges - Year 40



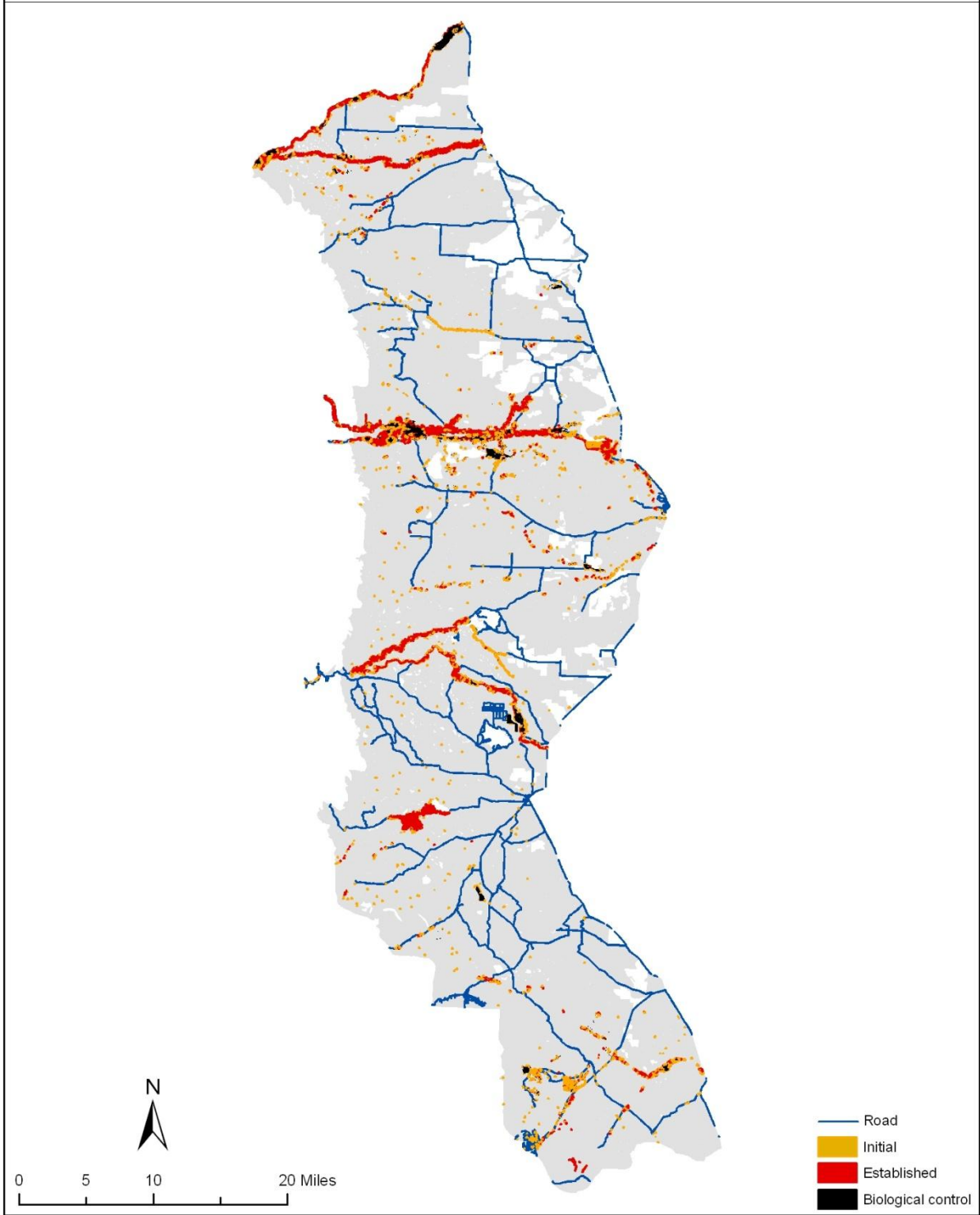
Rocky Mountain Front - *Centaurea maculosa* & *Euphorbia esula* -
Low Spread - Large Patch Edges - Year 40



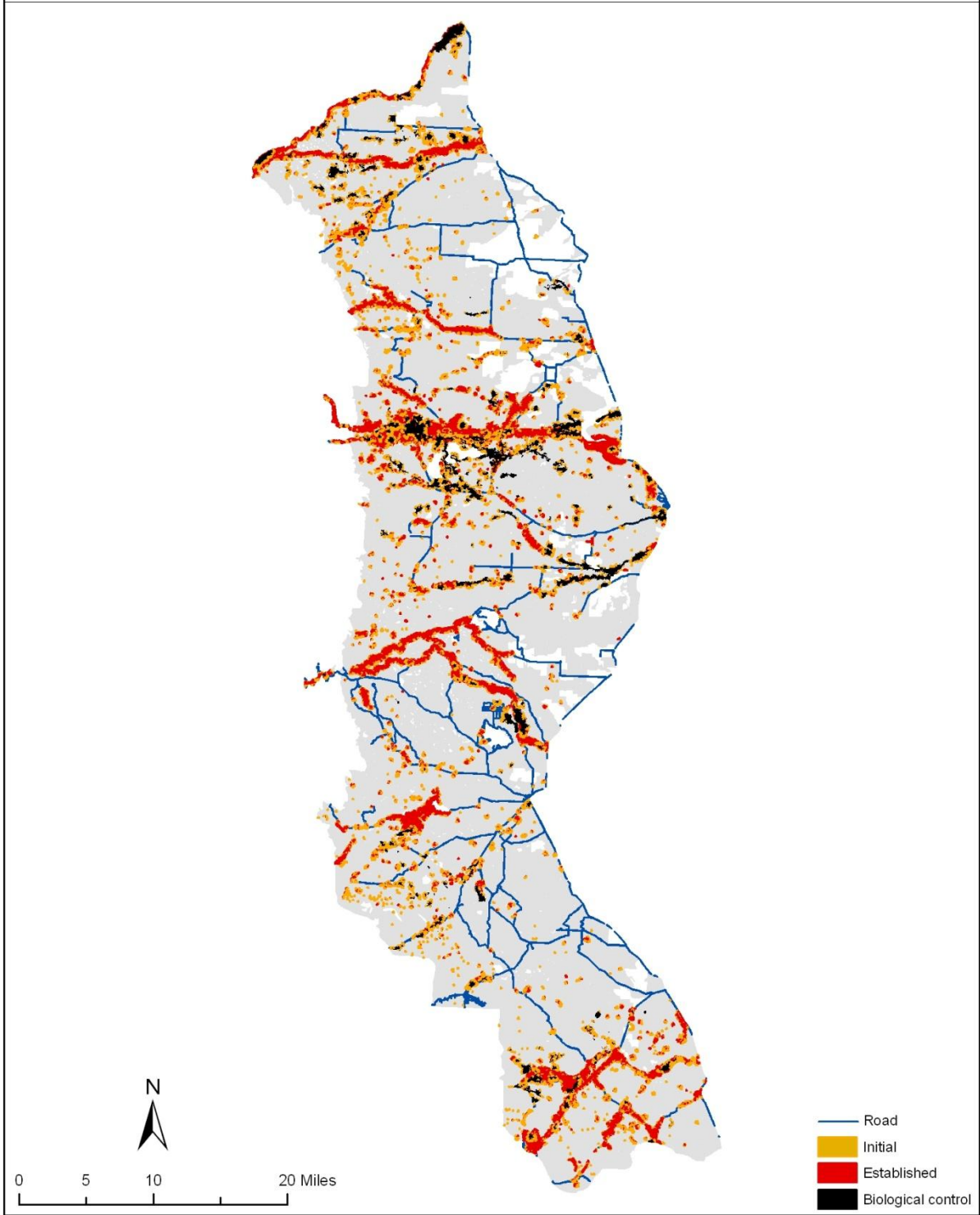
Rocky Mountain Front - *Centaurea maculosa* & *Euphorbia esula* -
High Spread - I1 Aware - Year 40



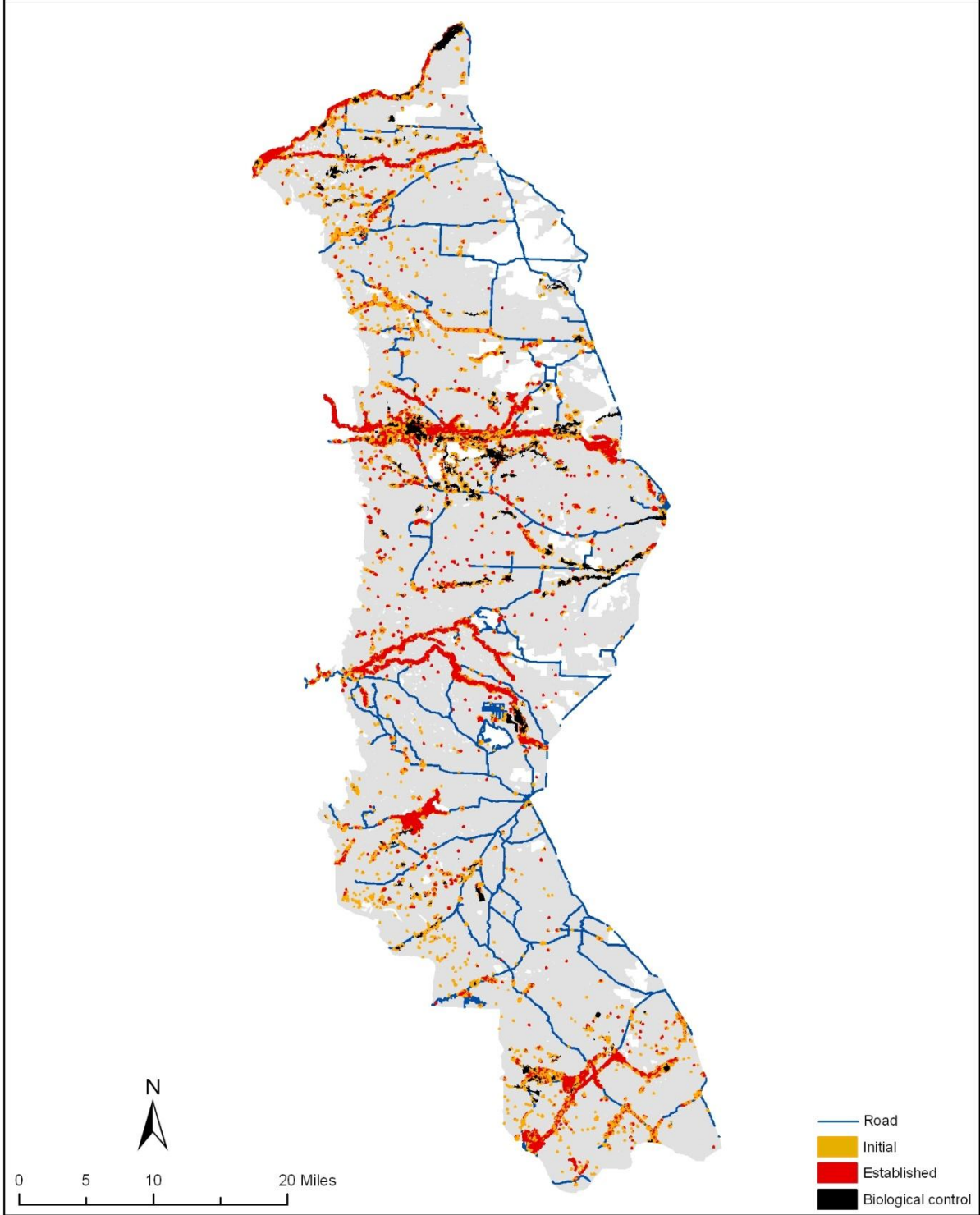
Rocky Mountain Front - *Centaurea maculosa* & *Euphorbia esula* -
Low Spread - I1 Aware - Year 40



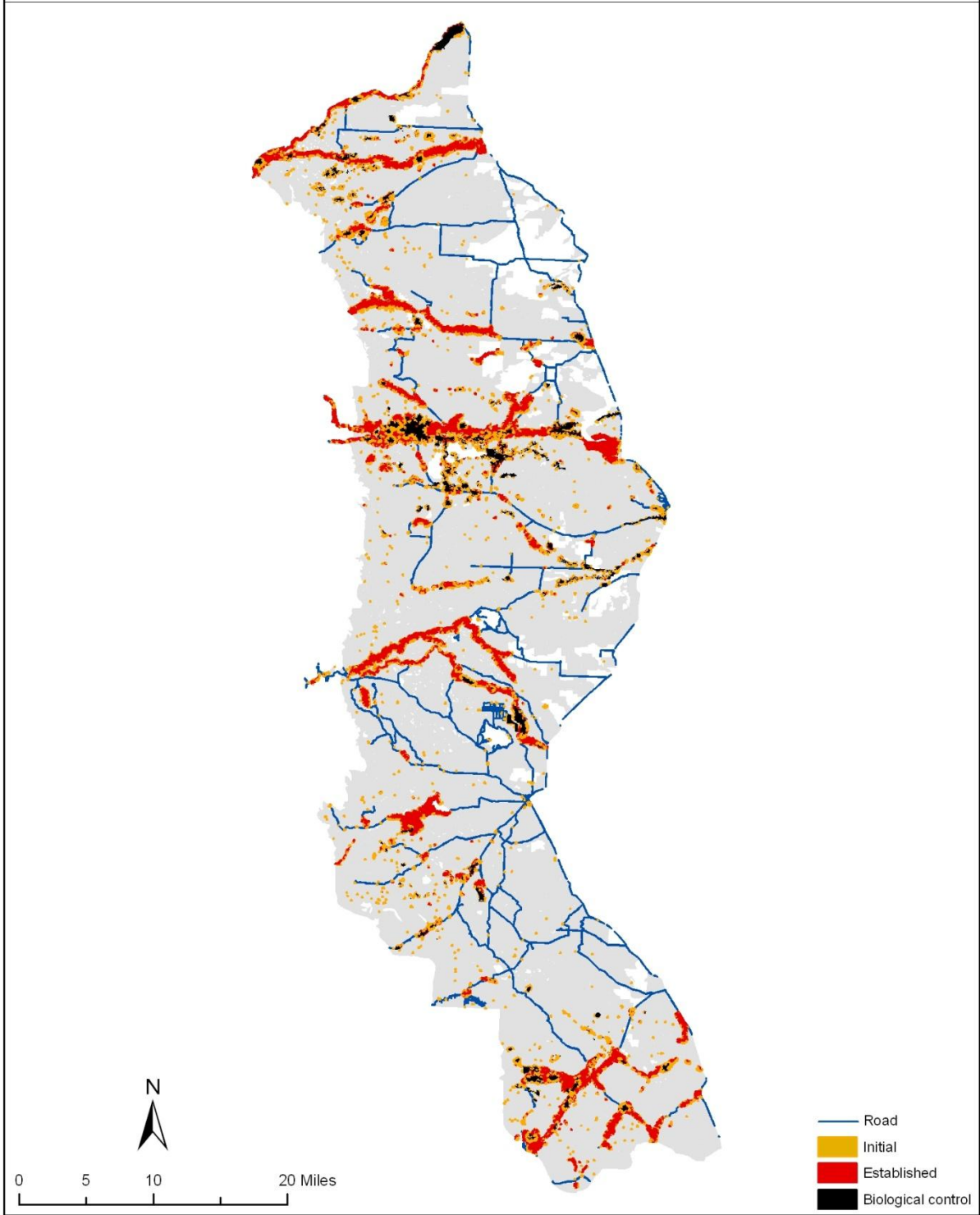
Rocky Mountain Front - *Centaurea maculosa* & *Euphorbia esula* -
High Spread - Roaming Treatment - Year 40



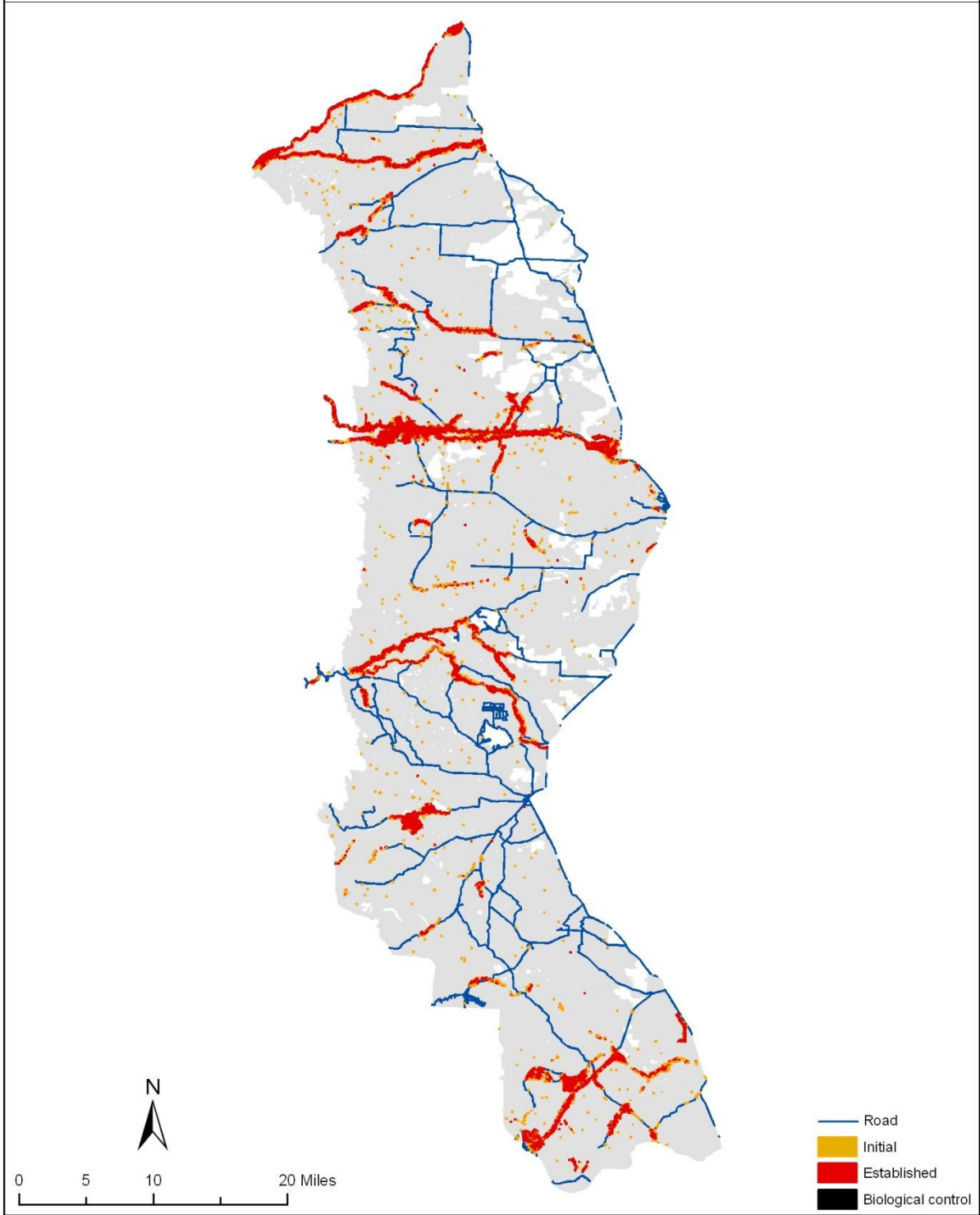
Rocky Mountain Front - *Centaurea maculosa* & *Euphorbia esula* -
Low Spread - Roaming Treatment - Year 40



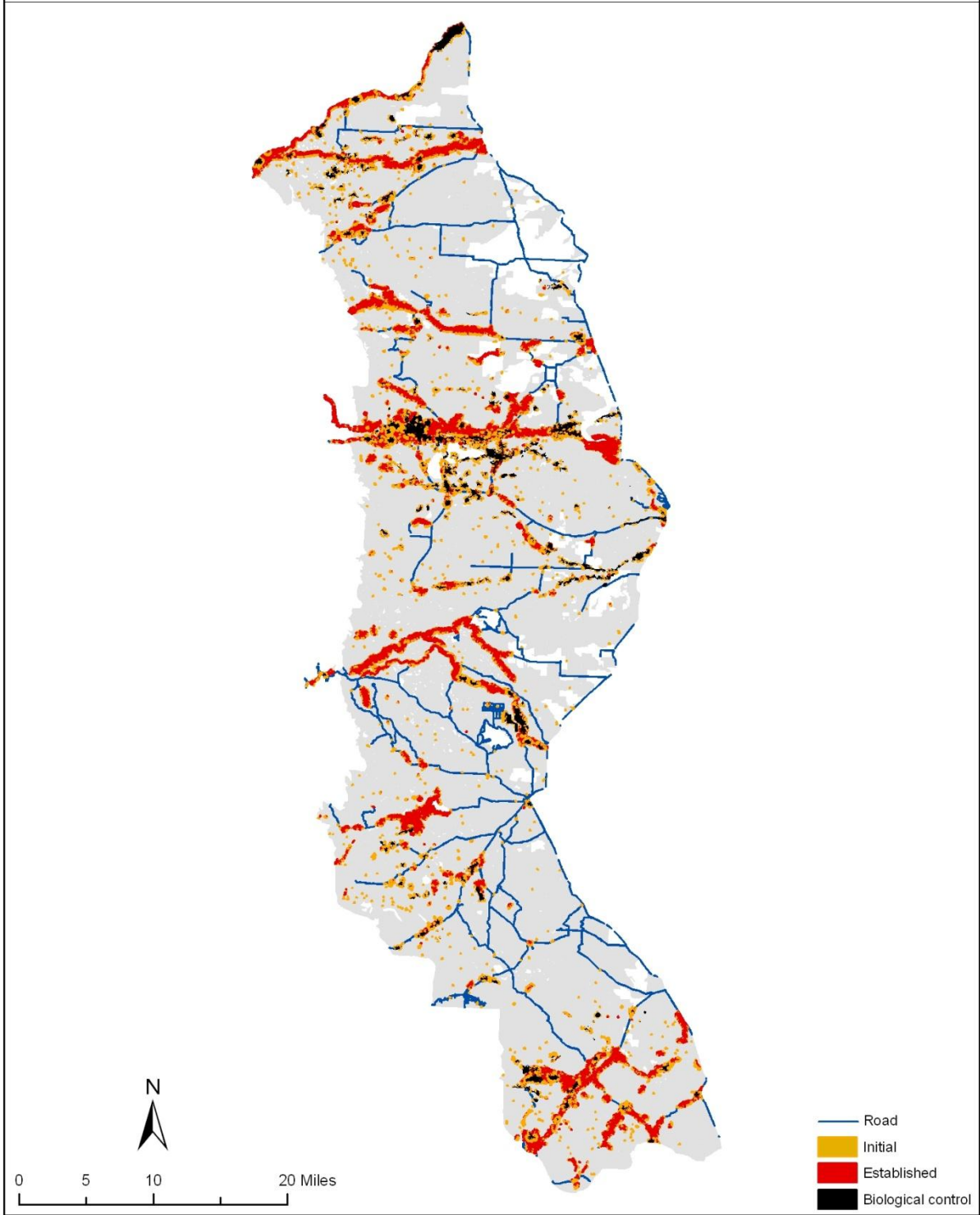
Rocky Mountain Front - *Centaurea maculosa* & *Euphorbia esula* -
High Spread - 5 Years Delay Before Treatment Starts - Year 40



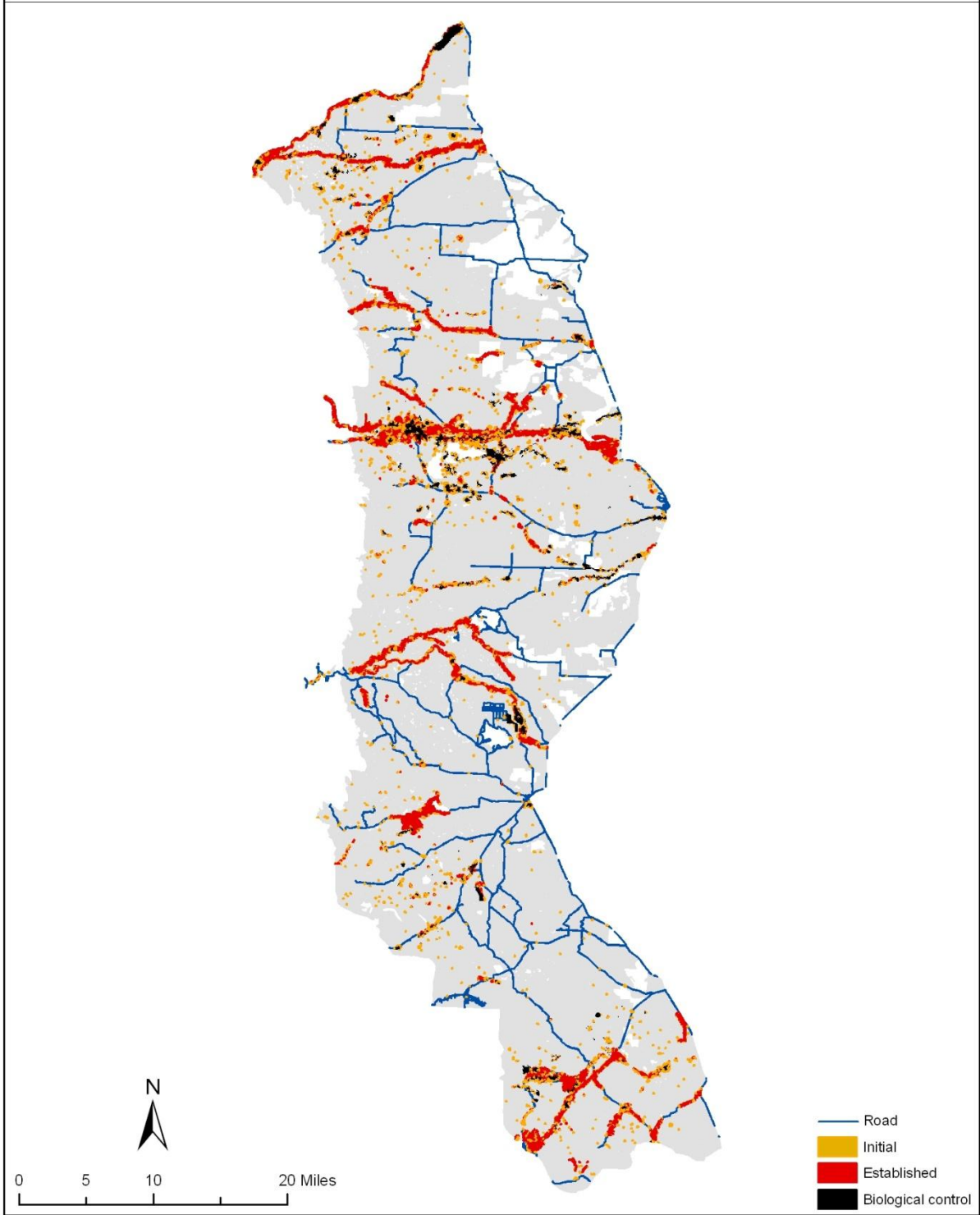
Rocky Mountain Front - *Centaurea maculosa* & *Euphorbia esula* -
Low Spread - 5 Years Delay Before Treatment Starts - Year 40



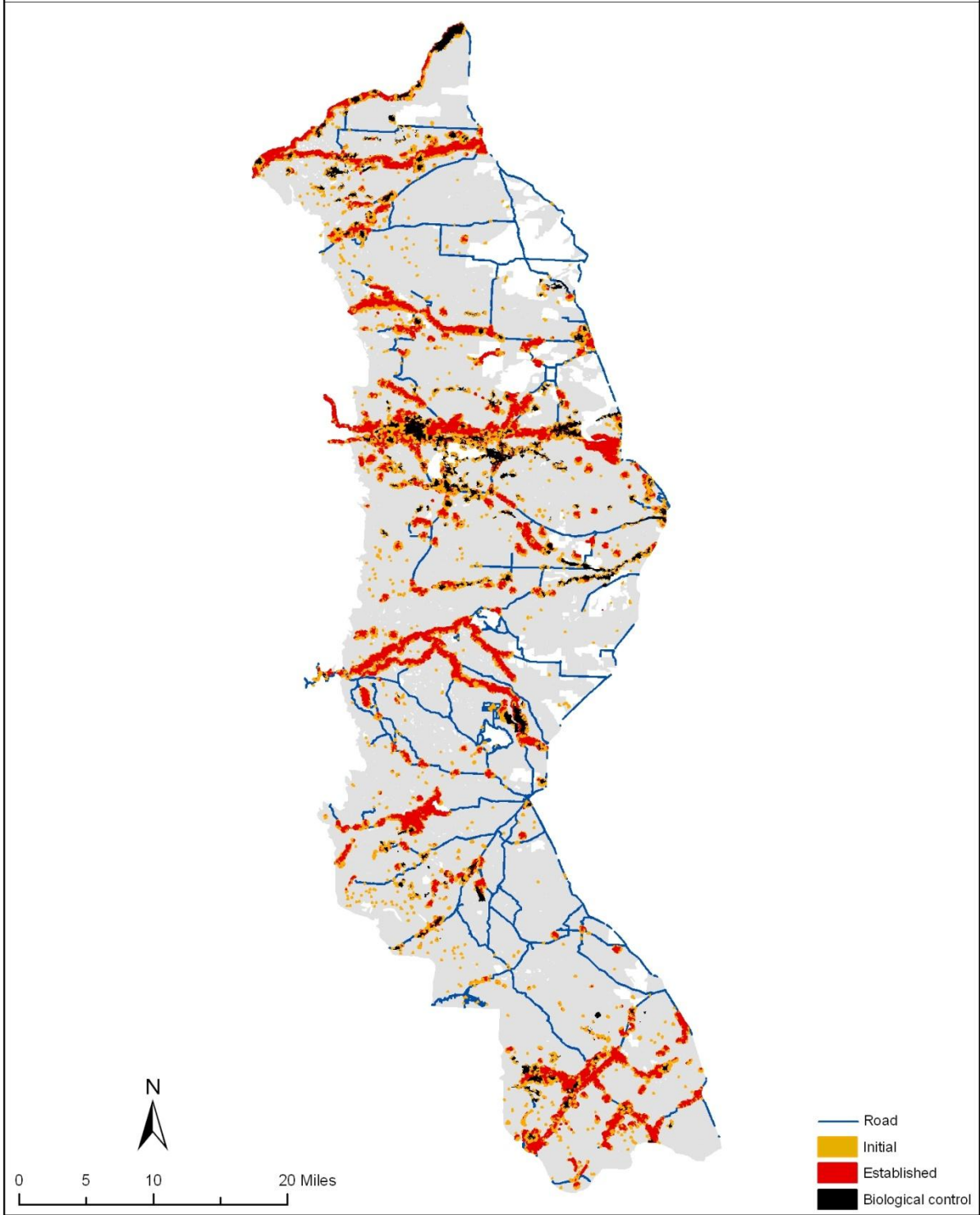
Rocky Mountain Front - *Centaurea maculosa* & *Euphorbia esula* -
High Spread - 10 Years Delay Before Treatment Starts - Year 40



Rocky Mountain Front - *Centaurea maculosa* & *Euphorbia esula* -
Low Spread - 10 Years Delay Before Treatment Starts - Year 40



Rocky Mountain Front - *Centaurea maculosa* & *Euphorbia esula* -
High Spread - 15 Years Delay Before Treatment Starts - Year 40



Rocky Mountain Front - *Centaurea maculosa* & *Euphorbia esula* -
Low Spread - 15 Years Delay Before Treatment Starts - Year 40

